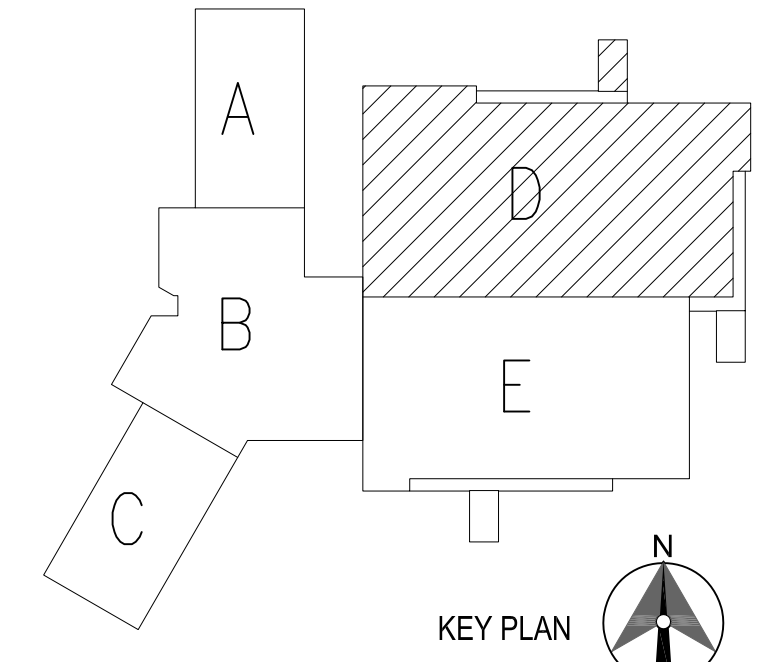


1 SECOND FLOOR FINISH PLAN - UNIT D
A1.38 1/8" = 1'-0"

| FINISH LEGEND | | GENERAL NOTES | |
|--|--|---|--|
| FLOORS: | WALLS: | ELEVATION ABBREVIATIONS: | <p>1. 5' X 6' QUARRY TILE BASE TO BE IN ALL ROOMS WITH VCT, CARPET, SEALED CONCRETE, AND QUARRY TILE.</p> <p>2. ALL QUARRY TILE AND CERAMIC TILE TO HAVE 100% EPOXY GROUT.</p> <p>3. TERRAZZO TO HAVE 16 GAUGE EXTRUDED ALUMINUM STRIP.</p> <p>4. ALL TERRAZZO FLOORS TO HAVE GLAZED CMU BASE.</p> <p>5. ALL ROOMS WITH EPOXY FLOORING EXCEPT CORRIDORS ARE TO HAVE INTEGRAL 4" EPOXY BASE. CORRIDORS WITH EPOXY FLOORING ARE TO HAVE GLAZED CMU BASE.</p> <p>6. SEE FLOOR PATTERN PLANS FOR FLOOR PATTERN COMPLEXITY.</p> <p>8. SEE INTERIOR ELEVATIONS FOR WALL TILE PATTERNS.</p> <p>9. SEE REFLECTED CEILING PLANS FOR FURR DOWN AND GYPSUM BOARD CEILING PAINT COLORS.</p> <p>10. STAGE TO HAVE 4" HIGH HARDWOOD BASE, PROFILE AND COLOR TO BE DETERMINED BY ARCHITECT.</p> <p>11. PROVIDE STONE THRESHOLDS AT ALL CERAMIC TILE FLOORING CONDITIONS. TRANSITION STRIPS ARE REQ'D AT ALL OTHER FLOORING MATERIAL TRANSITIONS AND ARE TO BE EXTRUDED ALUMINUM IN SATIN SILVER FINISH AND OF HEIGHT REQUIRED TO PROTECT EDGES OF FLOORING MATERIALS AND PROVIDE AN ADA COMPLIANT TRANSITION.</p> <p>12. FINISHES SHOWN IN ONE AREA OF ROOM OR CORRIDOR APPLY TO ENTIRE ROOM OR CORRIDOR, UNLESS OTHERWISE NOTED.</p> <p>13. SEE INTERIOR ELEVATIONS AT AREAS THAT REQUIRE MULTIPLE WALL FINISHES AT VARIOUS HEIGHTS.</p> <p>14. SEALED CONCRETE AT COOLER/FREEZER LOCATION IS A BASE FOR PRE-FABRICATED UNIT FLOORING.</p> <p>15. ALL ELEVATOR WALLS SHALL HAVE NON-REMOVABLE STAINLESS STEEL WALL PANELS. ELEVATOR CEILINGS SHALL HAVE FLUSH METAL PANELS WITH DOWN LIGHTS.</p> <p>16. ALL STAIR LANDINGS TO HAVE QTZ-1 BASE.</p> <p>17. ALL AREAS WITH CERAMIC TILE FLOORING TO HAVE 6"x6" CERAMIC TILE COVE BASE.</p> <p>18. ALL EXTERIOR FINISHES ARE NOTED ON EXTERIOR ELEVATIONS AND SECTIONS.</p> |
| <ul style="list-style-type: none"> VCT VINYL COMPOSITION TILE WVCT FIELD-FINISHED WOOD FLOORING WVAT WOOD ATHLETIC FLOORING CPT CARPET TILE NSQ NON-SLIP QUARRY TILE SC SEALED CONCRETE UCS UNGLAZED CERAMIC TILE BCB BROADLOOM CARPET T TERRAZZO EPF EPOXY FLOORING EA EXPOSED AGGREGATE | <ul style="list-style-type: none"> ERPF EXTERIOR RUBBER PLAYGROUND FLOORING M METAL FLOORING RTF RUBBER TILE FLOORING P PAINT EP EPOXY PAINT GFCM GROUND FACE CMU GCT GLAZED CERAMIC TILE UB UNPAINTED CMU BLOCK NRS NON-REMOVABLE STAINLESS STEEL WALL PANELS GLCM GLAZED CMU | <ul style="list-style-type: none"> CTB GLAZED CERAMIC TILE COVE BASE QTB QUARRY TILE BASE SS SOLID SURFACE AWP ACOUSTICAL WALL PANEL WSD WALL SOUND DIFFUSER ARAWT ABUSE-RESISTANT ACOUSTICAL WALL TREATMENT WP CARVED WOOD PANELING MT MOSAIC TILE CSC CAST STONE CAPITAL | |



DATE ISSUED: 21 JUNE 2010
 REVISED:
 REVISED:
 REVISED:
 REVISED:
 DRAWN BY: BVH, BJM
 CHECKED BY: CEV
 PHASE: 100% CONSTRUCTION DOCUMENTS

09013B

TITLE: SECOND FLOOR FINISH PLAN - UNIT D
 SHEET:

A1.38