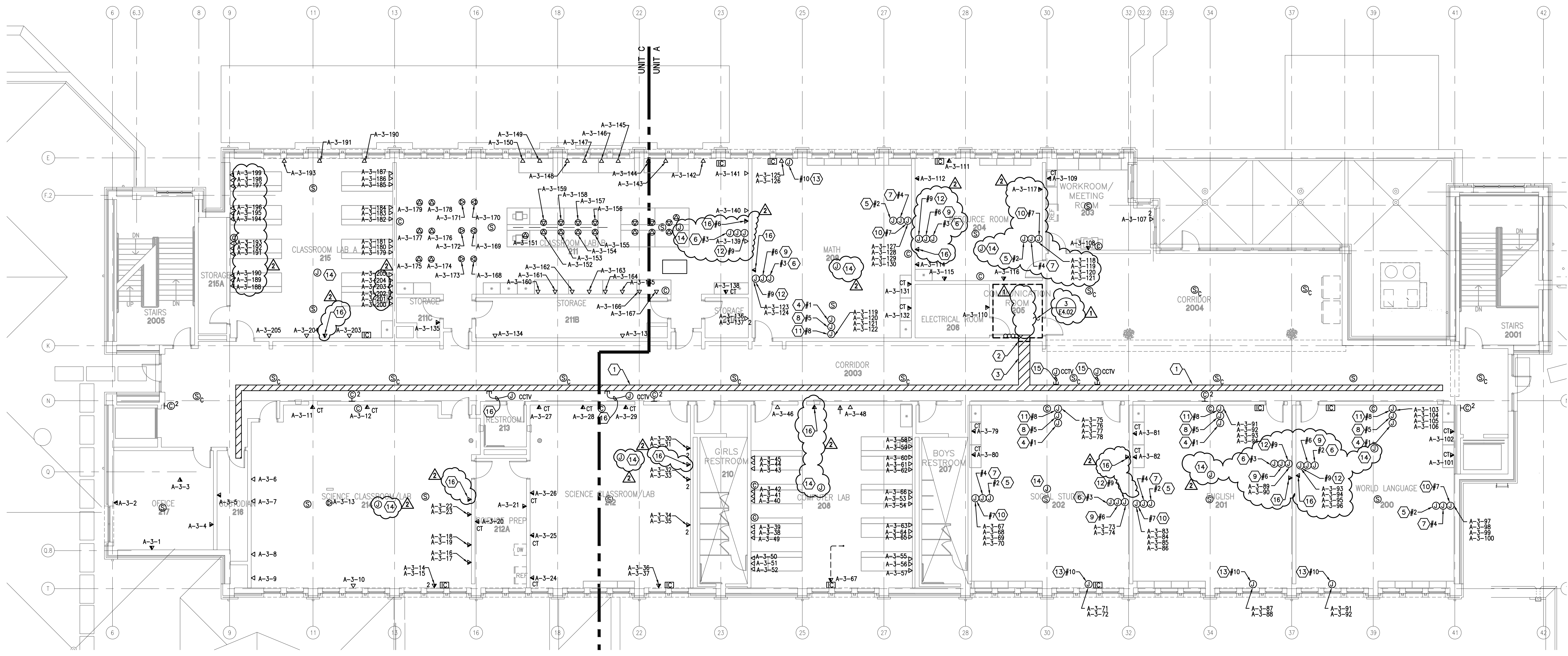


REVISIONS	BY
06-22-10	ADG
07-12-10	ADG

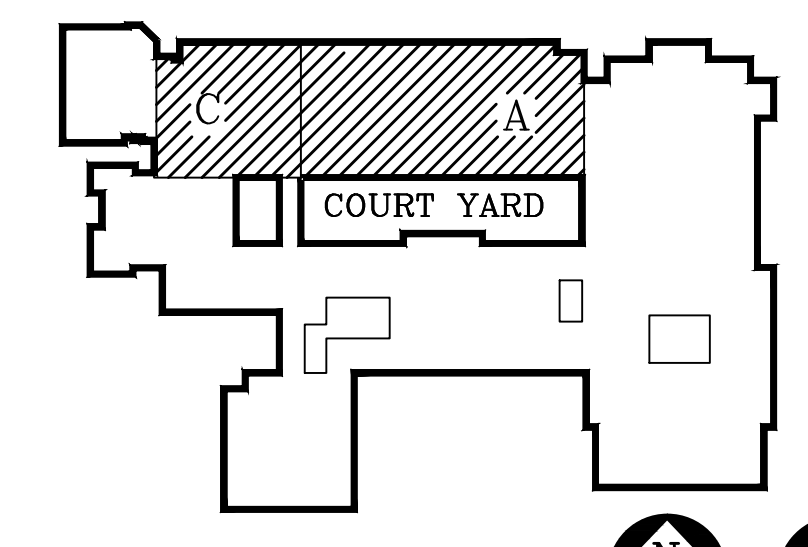
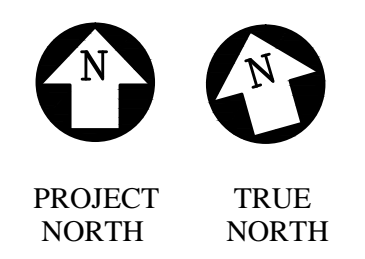
CONTRACTOR MUST VERIFY AND CHECK ALL JOB DIMENSIONS, REVISE AND SPECIFY BEFORE SITE AND REPORT ANY ERRORS, OMISSIONS AND DISCREPANCIES BEFORE PROCEEDING.



SPECIFIC NOTES:

- 1 PROVIDE A 18"x33"H. CABLE TRAY. MOUNT CABLE TRAY ABOVE ACCESSIBLE LAY-IN CEILING.
- 2 FIRE-STOP ALL PENETRATIONS THROUGH FIRE-RATED WALLS.
- 3 PROVIDE A 24"x33"H. CABLE TRAY.
- 4 JUNCTION BOX #1-PROVIDE A 12"x8"x4" DEEP NEMA 1 JUNCTION WITH A HINGED COVER. MOUNT THE BOX ABOVE THE ACCESSIBLE LAY-IN CEILING. SEE THE CLASSROOM ROUGH-IN CABLING DETAIL ON SHEET ED.7 FOR SYSTEM DETAILS.
- 5 CLASSROOM JUNCTION BOX #2-PROVIDE A 4 INCH SQUARE BOX AND MOUNT ABOVE THE ACCESSIBLE LAY-IN CEILING. SEE THE CLASSROOM ROUGH-IN CABLING DETAIL ON SHEET ED.7 FOR SYSTEM DETAILS.
- 6 CLASSROOM JUNCTION BOX #3-PROVIDE A 4 INCH SQUARE BOX AND MOUNT ABOVE THE ACCESSIBLE LAY-IN CEILING. SEE THE CLASSROOM ROUGH-IN CABLING DETAIL ON SHEET ED.7 FOR SYSTEM DETAILS.
- 7 CLASSROOM JUNCTION BOX #4-PROVIDE A 4 INCH SQUARE BOX AND MOUNT ADJACENT TO THE TEACHER WORKSTATION @ 90° AFF. SEE THE CLASSROOM ROUGH-IN CABLING DETAIL ON SHEET ED.7 FOR SYSTEM DETAILS.
- 8 CLASSROOM JUNCTION BOX #5-PROVIDE A 4 INCH SQUARE BOX AND MOUNT AT 90° AFF. SEE THE CLASSROOM ROUGH-IN CABLING DETAIL ON SHEET ED.7 FOR SYSTEM DETAILS.
- 9 CLASSROOM JUNCTION BOX #6-PROVIDE A 4 INCH SQUARE BOX AND MOUNT AT 90° AFF. SEE THE CLASSROOM ROUGH-IN CABLING DETAIL ON SHEET ED.7 FOR SYSTEM DETAILS.
- 10 CLASSROOM JUNCTION BOX #7-PROVIDE A 4 INCH SQUARE BOX AND MOUNT AT 90° AFF. SEE THE CLASSROOM ROUGH-IN CABLING DETAIL ON SHEET ED.7 FOR SYSTEM DETAILS.
- 11 CLASSROOM JUNCTION BOX #8-PROVIDE A 4" SQUARE BOX AND MOUNT AT 16" AFF. SEE THE CLASSROOM ROUGH-IN CABLING DETAIL ROUGH-IN CABLING DETAIL ON SHEET ED.7 FOR SYSTEM DETAILS.
- 12 CLASSROOM JUNCTION BOX #9-PROVIDE A 4" SQUARE BOX AND MOUNT AT 16" AFF. SEE THE CLASSROOM ROUGH-IN CABLING DETAIL ON SHEET ED.7 FOR SYSTEM DETAILS.
- 13 CLASSROOM JUNCTION BOX #10-PROVIDE A 4" SQUARE BOX AND MOUNT AT 16" AFF. SEE THE CLASSROOM ROUGH-IN CABLING DETAIL ON SHEET ED.7 FOR SYSTEM DETAILS. MOUNT ADJACENT TO THE TEACHER'S WORKSTATION.
- 14 JUNCTION BOX FOR CEILING MOUNTED PROJECTOR. VERIFY EXACT LOCATION PRIOR TO ROUGH-IN.
- 15 PROVIDE 3/4" EMPTY CONDUIT STUBBED OUT OF THE BUILDING CABLE TRAY FOR THE CCTV SIGNAL CABLING SYSTEM. THE CCTV CAMERAS AND CABLES ARE OWNER FURNISHED AND CONTRACTOR INSTALLED.
- 16 DATA OUTLET FOR CONNECTION TO SMART BOARD. VERIFY MOUNTING HEIGHT PER ARCHITECTURAL DETAILS PRIOR TO ROUGH-IN.

1 UNITS A AND C THIRD FLOOR SPECIAL SYSTEMS PLAN
SCALE: 1/8" = 1'-0"



KEY PLAN
NOT TO SCALE

ASSOCIATED DESIGN GROUP, INC.
CONSULTING ENGINEERS

CORPORATE OFFICE
114 Toledo Drive
Lafayette, Louisiana 70506
(337) 234-8710

NEW ORLEANS BRANCH
1010 Common St.
Suite 8405
New Orleans, LA 70112
(504) 561-8333

Project # 02193

ADDENDUM 2
ATTACHMENT 57

NEW PHOENIX PRE-K THROUGH 12 SCHOOL

UNITS A AND C THIRD FLOOR
SPECIAL SYSTEMS PLAN

DRAWN: ABF
CHECKED: JL
SCALE:
DATE: 05-24-2010

E2.24