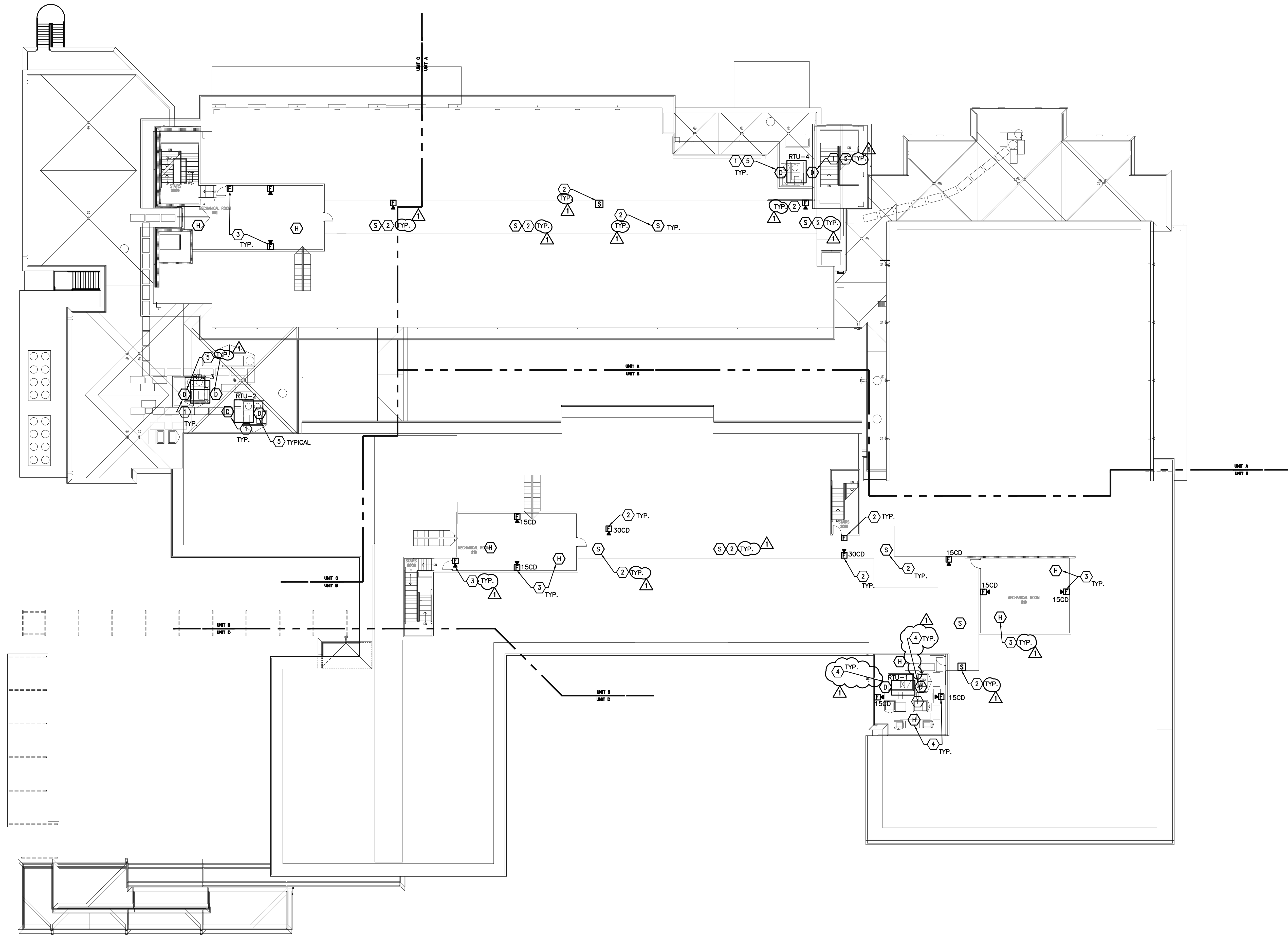


REVISIONS	BY
06-22-10	ADG

- SPECIFIC NOTES:**
- 1) INSTALL THE DUCT DETECTORS THAT ARE FURNISHED BY DV. 15 IN THE SUPPLY AND RETURN DUCTS.
 - 2) PROVIDE FIRE ALARM DEVICES IN ENCLOSED ATTIC CORRIDOR, TYPICAL.
 - 3) PROVIDE FIRE ALARM DEVICES IN ATTIC MECHANICAL ROOM, TYPICAL.
 - 4) HVAC EQUIPMENT AND DUCT DETECTORS LOCATED IN MECHANICAL ROOM.
 - 5) FIRE ALARM DEVICES AND HVAC DUCT DETECTORS ARE LOCATED ON THE ROOF. PROVIDE WEATHER PROOF BACK BOXES AND COVER PLATES.

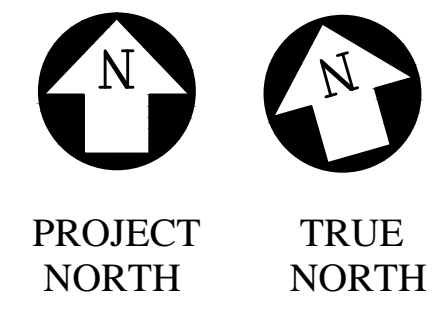
- GENERAL NOTES:**
- 1.) ADDITIONAL FIRE ALARM DEVICES MAY BE REQUIRED BY APPLICABLE BUILDING CODES AND/ OR THE STATE FIRE MARSHALL. IT IS THE CONTRACTOR'S RESPONSIBILITY TO INSURE THAT ALL FIRE ALARM DEVICES ARE INCLUDED IN THE BID AND TO CONFIRM THAT THE BUILDING'S FIRE ALARM SYSTEM MEETS ALL APPLICABLE CODES AND REQUIREMENTS OF THE STATE FIRE MARSHALL. THE CONTRACTOR SHALL PROVIDE ALL FIRE ALARM SYSTEM COMPONENTS WHETHER SHOWN ON THE FIRE ALARM CONTRACT DOCUMENTS OR NOT.



NEW PHOENIX PRE-K THROUGH 12 SCHOOL

ATTIC/ ROOF FIRE ALARM PLAN

1 ATTIC/ ROOF FIRE ALARM PLAN
SCALE: 1/16" = 1'-0"



ASSOCIATED DESIGN GROUP, Inc.
CONSULTING ENGINEERS

CORPORATE OFFICE
114 Toledo Drive
Lafayette, Louisiana 70506
(337) 234-8710

NEW ORLEANS BRANCH
1010 Common St.
Suite 8405
New Orleans, LA 70112
(504) 561-8333

Project # 02193

DRAWN: ABF
CHECKED: RAG
SCALE:
DATE: 05-24-2010

E2.21