

REVISIONS	BY
06-22-10	ADG

SPECIFIC NOTES:

- 1 PROVIDE A 18 INCH WIDE x 6"D. WIDE MESH CABLE TRAY. MOUNT ABOVE ACCESSIBLE CEILINGS. SEE THE CABLE TRAY SPECIFICATION SECTION FOR FURTHER DETAILS.
- 2 PROVIDE (4) 4 INCH METALLIC CONDUIT SLEEVES WITH THREADED BUSHINGS ON EACH END.
- 3 FIRE STOP ALL CONDUIT SLEEVES PENETRATING FIRE-RATED WALLS.
- 4 JUNCTION BOX #1. PROVIDE A 12"x6"x4"D. JUNCTION BOX WITH A HINGED COVER. MOUNT ABOVE THE ACCESSIBLE LAY-IN CEILING. SEE THE CLASSROOM ROUGH-IN CABLING DETAIL ON SHEET ED.7 FOR SYSTEM DETAILS.
- 5 CLASSROOM JUNCTION BOX #2. SEE THE CLASSROOM ROUGH-IN CABLING DETAIL ON SHEET ED.7 FOR SYSTEM DETAILS. MOUNT ABOVE THE ACCESSIBLE LAY-IN CEILING.
- 6 CLASSROOM JUNCTION BOX #3. SEE THE CLASSROOM ROUGH-IN CABLING DETAIL ON SHEET ED.7 FOR SYSTEM DETAILS. MOUNT ABOVE THE ACCESSIBLE LAY-IN CEILING.
- 7 CLASSROOM JUNCTION BOX #4. SEE THE CLASSROOM ROUGH-IN CABLING DETAIL ON SHEET ED.7 FOR SYSTEM DETAILS. MOUNT @ 90" AFF.
- 8 CLASSROOM JUNCTION BOX #5. SEE THE CLASSROOM ROUGH-IN CABLING DETAIL ON SHEET ED.7 FOR SYSTEM DETAILS. MOUNT @ 90" AFF.
- 9 CLASSROOM JUNCTION BOX #6. SEE THE CLASSROOM ROUGH-IN CABLING DETAIL ON SHEET ED.7 FOR SYSTEM DETAILS. MOUNT @ 90" AFF.
- 10 CLASSROOM JUNCTION BOX #7. SEE THE CLASSROOM ROUGH-IN CABLING DETAIL ON SHEET ED.7 FOR SYSTEM DETAILS. MOUNT @ 16" AFF.
- 11 CLASSROOM JUNCTION BOX #8. SEE THE CLASSROOM ROUGH-IN CABLING DETAIL ON SHEET ED.7 FOR SYSTEM DETAILS. MOUNT @ 16" AFF.
- 12 CLASSROOM JUNCTION BOX #9. SEE THE CLASSROOM ROUGH-IN CABLING DETAIL ON SHEET ED.7 FOR SYSTEM DETAILS. MOUNT @ 16" AFF.
- 13 CLASSROOM JUNCTION BOX #10. SEE THE CLASSROOM ROUGH-IN CABLING DETAIL ON SHEET ED.7 FOR SYSTEM DETAILS. MOUNT @ 16" AFF. MOUNT ADJACENT TO THE TEACHER'S WORKSTATION.
- 14 PROVIDE A 4" SQUARE JUNCTION BOX FLUSH WITH ACCESSIBLE CEILING FOR THE PROJECTOR. VERIFY EXACT LOCATION, PRIOR TO ROUGH-IN.
- 15 STUB-OUT (1) 3/4" EMPTY CONDUIT WITH PULLSTRING FOR THE CCTV SIGNAL CABLES 3/4" CONDUIT TO THE BUILDING CABLE TRAY. TERMINATE THE CONDUIT WITH A THREADED BUSHING. THE CCTV CAMERAS AND SIGNAL CABLES ARE FURNISHED BY THE OWNER AND INSTALLED BY THE CONTRACTOR.

CONTRACTOR MUST VERIFY AND CHECK ALL JOB DIMENSIONS, DETAILS AND OPERATIONS ON SITE AND REPORT ANY ERRORS, OMISSIONS AND DISCREPANCIES BEFORE PROCEEDING.

NEW PHOENIX PRE-K THROUGH 12 SCHOOL

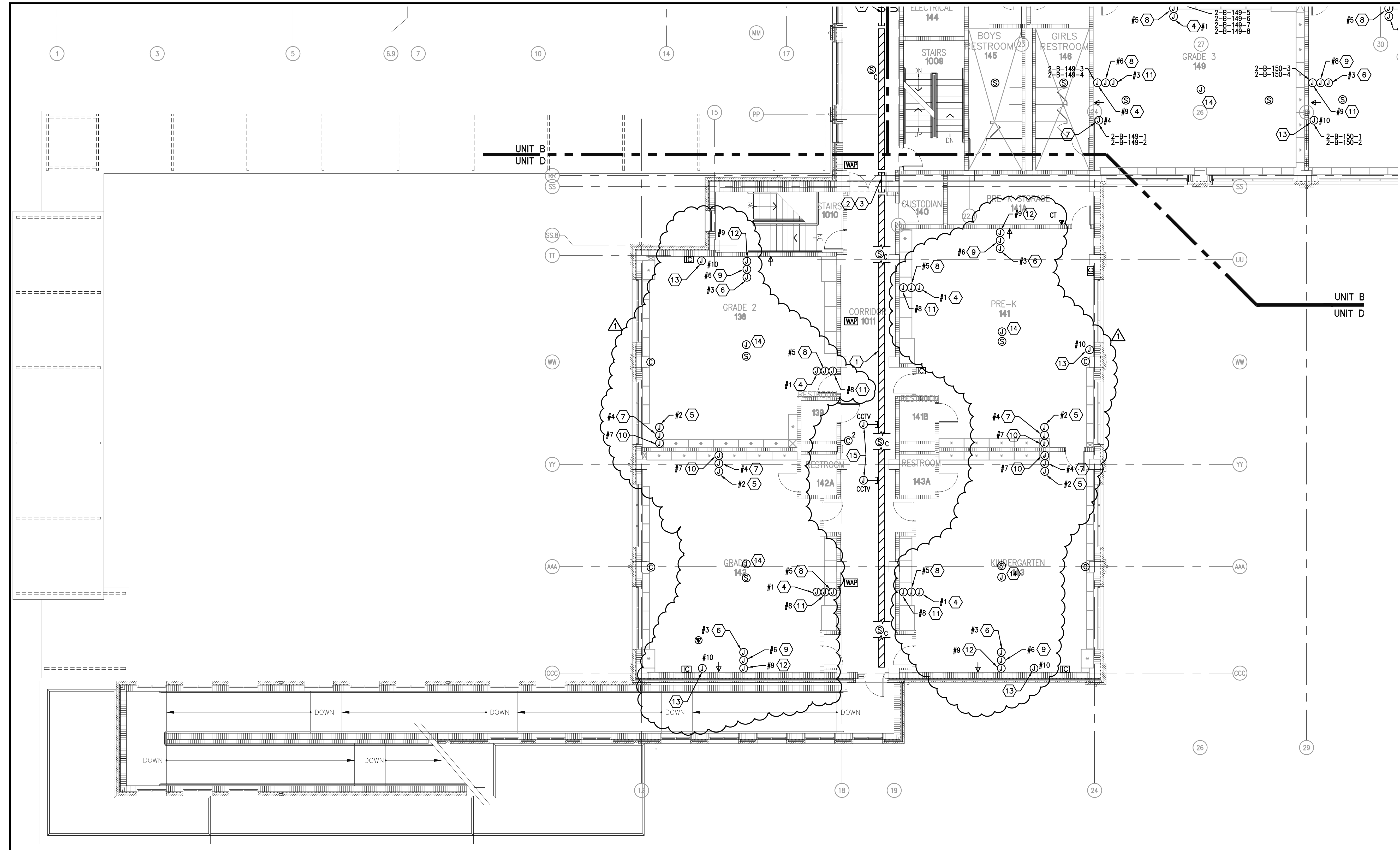
UNIT D SECOND FLOOR SPECIAL SYSTEMS PLAN

SEAL

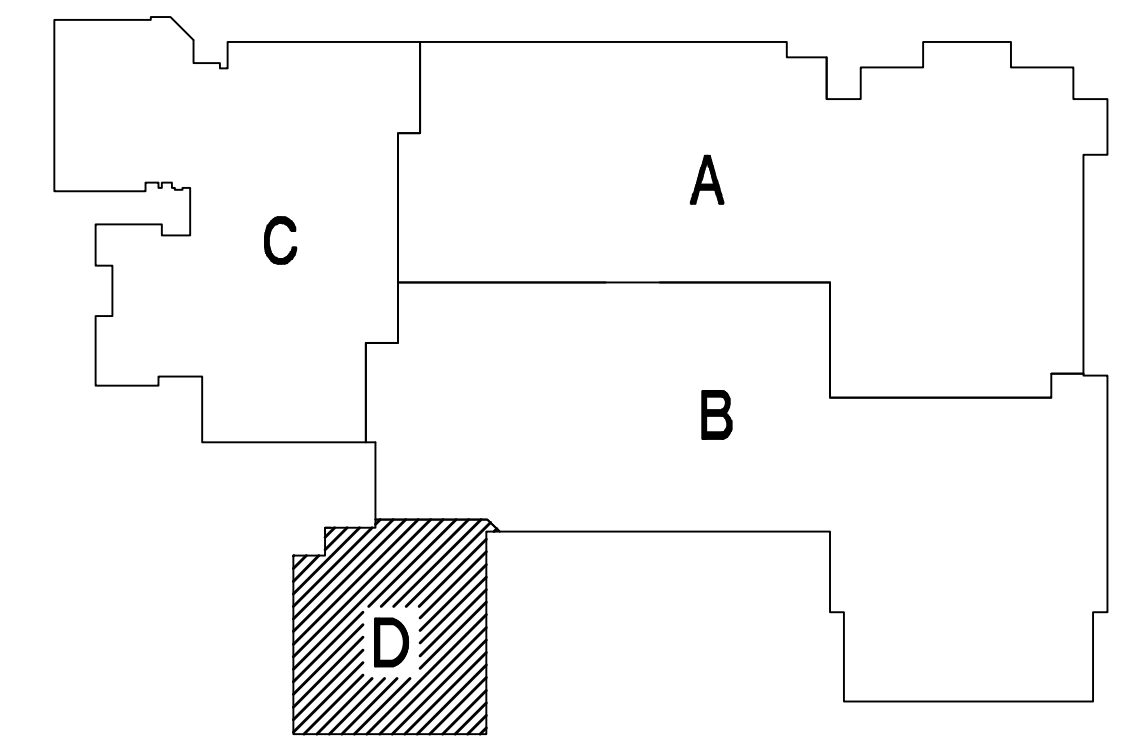
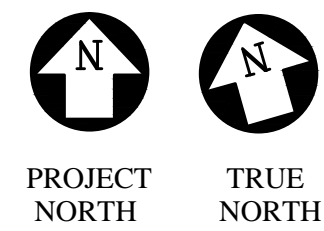
DRAWN: JAM
CHECKED: RAG
SCALE:
DATE: 05-24-2010

E2.15

©



1 UNIT D SECOND FLOOR SPECIAL SYSTEMS PLAN
SCALE: 1/8" = 1'-0"



KEY PLAN

ASSOCIATED DESIGN GROUP, INC.
CONSULTING ENGINEERS

CORPORATE OFFICE
114 Toledo Drive
Lafayette, Louisiana 70508
(337) 284-8710

NEW ORLEANS BRANCH
1010 Common St.
Suite 8405
New Orleans, LA 70112
(504) 561-8333

Project # 02193