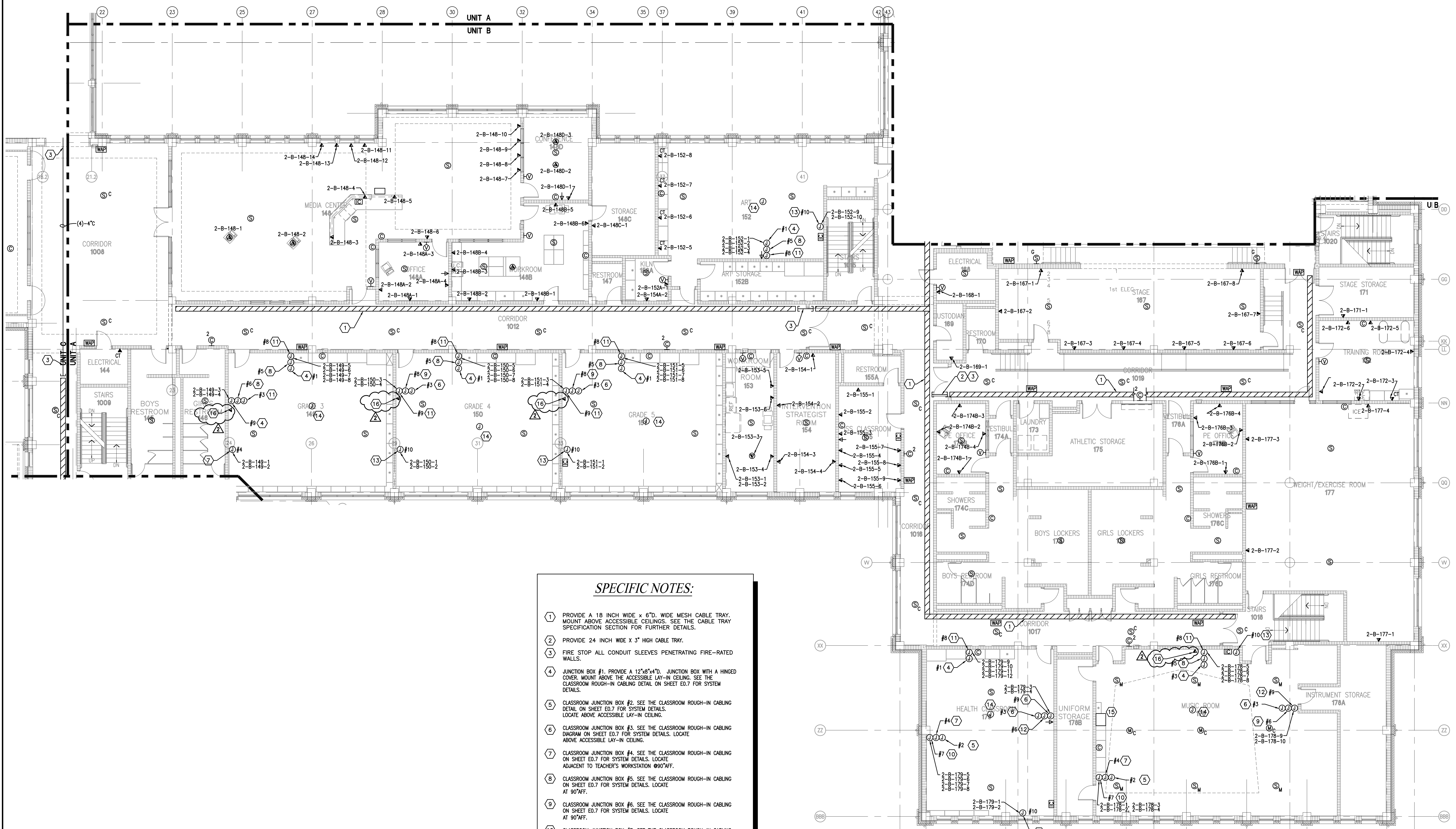


REVISIONS	BY
06-22-10	ADG
07-12-10	ADG

CONTRACTOR MUST VERIFY AND CHECK ALL JOB DIMENSIONS, REVISE AND SPECIFYING ON SITE AND REPORT ANY ERRORS, OMISSIONS AND DISCREPANCIES BEFORE PROCEEDING.

NEW PHOENIX PRE-K THROUGH 12 SCHOOL

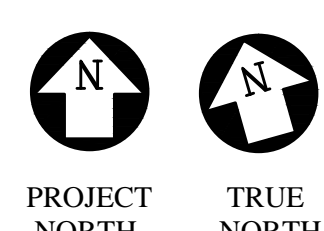
UNIT B SECOND FLOOR SPECIAL SYSTEMS PLAN



SPECIFIC NOTES:

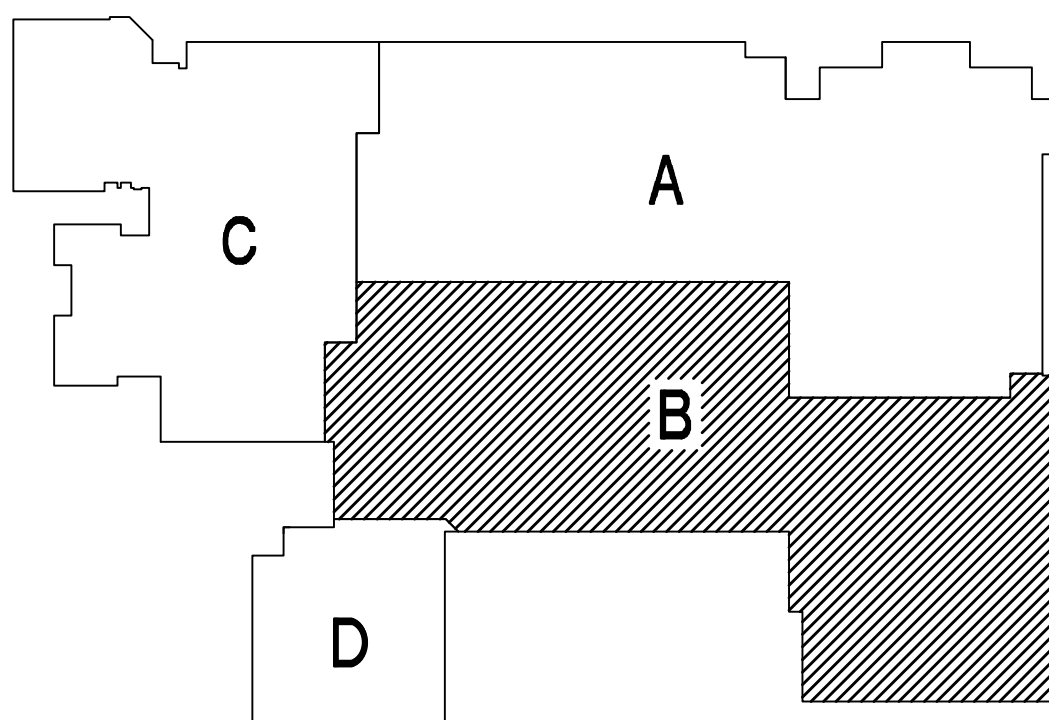
- 1 PROVIDE A 18 INCH WIDE x 6" D, WIDE MESH CABLE TRAY. MOUNT ABOVE ACCESSIBLE CEILING. SEE THE CABLE TRAY SPECIFICATION SECTION FOR FURTHER DETAILS.
- 2 PROVIDE 24 INCH WIDE X 3" HIGH CABLE TRAY.
- 3 FIRE STOP ALL CONDUIT SLEEVES PENETRATING FIRE-RATED WALLS.
- 4 JUNCTION BOX #1. PROVIDE A 12"x8"x4" D. JUNCTION BOX WITH A HINGED COVER. MOUNT ABOVE THE ACCESSIBLE LAY-IN CEILING. SEE THE CLASSROOM ROUGH-IN CABLING DETAIL ON SHEET ED.7 FOR SYSTEM DETAILS.
- 5 CLASSROOM JUNCTION BOX #2. SEE THE CLASSROOM ROUGH-IN CABLING DETAIL ON SHEET ED.7 FOR SYSTEM DETAILS. LOCATE ABOVE ACCESSIBLE LAY-IN CEILING.
- 6 CLASSROOM JUNCTION BOX #3. SEE THE CLASSROOM ROUGH-IN CABLING DIAGRAM ON SHEET ED.7 FOR SYSTEM DETAILS. LOCATE ABOVE ACCESSIBLE LAY-IN CEILING.
- 7 CLASSROOM JUNCTION BOX #4. SEE THE CLASSROOM ROUGH-IN CABLING ON SHEET ED.7 FOR SYSTEM DETAILS. LOCATE ADJACENT TO TEACHER'S WORKSTATION @90° AFF.
- 8 CLASSROOM JUNCTION BOX #5. SEE THE CLASSROOM ROUGH-IN CABLING ON SHEET ED.7 FOR SYSTEM DETAILS. LOCATE AT 90° AFF.
- 9 CLASSROOM JUNCTION BOX #6. SEE THE CLASSROOM ROUGH-IN CABLING ON SHEET ED.7 FOR SYSTEM DETAILS. LOCATE AT 90° AFF.
- 10 CLASSROOM JUNCTION BOX #7. SEE THE CLASSROOM ROUGH-IN CABLING ON SHEET ED.7 FOR SYSTEM DETAILS. LOCATE AT 90° AFF.
- 11 CLASSROOM JUNCTION BOX #8. SEE THE CLASSROOM ROUGH-IN CABLING ON SHEET ED.7 FOR SYSTEM DETAILS. LOCATE AT 16° AFF.
- 12 CLASSROOM JUNCTION BOX #9. SEE THE CLASSROOM ROUGH-IN CABLING ON SHEET ED.7 FOR SYSTEM DETAILS. LOCATE AT 16° AFF.
- 13 CLASSROOM JUNCTION BOX #10. SEE THE CLASSROOM ROUGH-IN CABLING ON SHEET ED.7 FOR SYSTEM DETAILS. LOCATE AT 16° AFF.
- 14 JUNCTION BOX FOR CEILING MTD PROJECTOR VERIFY EXACT LOCATION PRIOR TO ROUGH-IN.
- 15 SOUND EQUIPMENT RACK. SEE SPECS.
- 16 DATA OUTLET FOR CONNECTION TO THE SMART BOARD. VERIFY MOUNTING HEIGHT PER THE ARCHITECTURAL DETAILS PRIOR TO ROUGH-IN.

1 UNIT B SECOND FLOOR SPECIAL SYSTEMS PLAN
SCALE: 1/8" = 1'-0"



ADDENDUM 2

ATTACHMENT 53



KEY PLAN

ASSOCIATED DESIGN GROUP, INC.
CONSULTING ENGINEERS

CORPORATE OFFICE
114 Toledo Drive
Lafayette, Louisiana 70508
(337) 284-8710

NEW ORLEANS BRANCH
1010 Common St.
Suite 8405
New Orleans, LA 70112
(504) 561-8333

Project # 02193

DRAWN: JAM
CHECKED: RAG
SCALE:
DATE: 05-24-2010

E2.13