

REVISIONS	BY
06-22-10	ADG
07-12-10	ADG

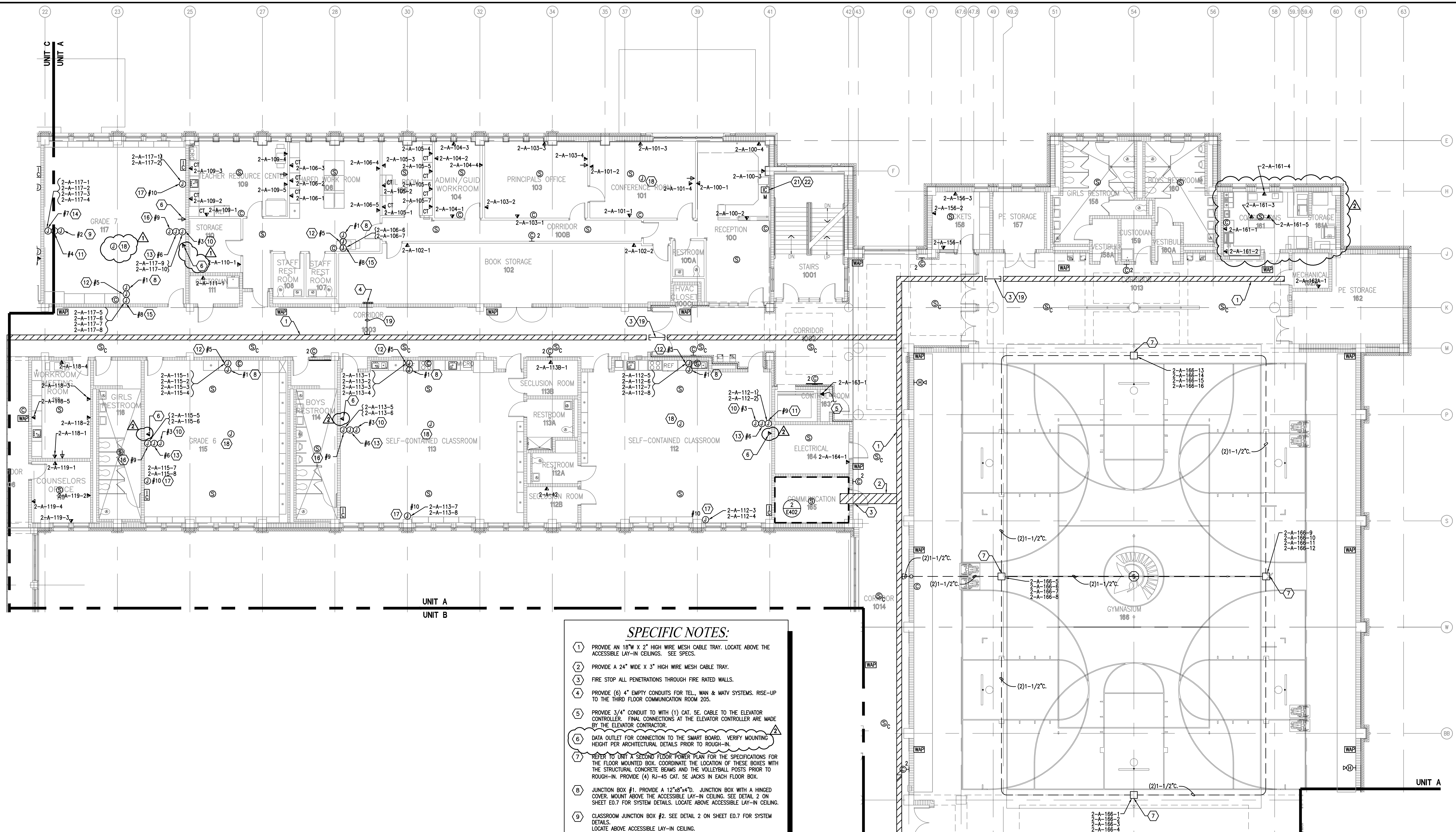
CONTRACTOR MUST VERIFY AND CHECK ALL JOB DIMENSIONS, REVISE AND SPECIFICATIONS ON SITE AND REPORT ANY ERRORS, OMISSIONS AND DISCREPANCIES BEFORE PROCEEDING.

NEW PHOENIX PRE-K THROUGH 12 SCHOOL

UNIT A SECOND FLOOR SPECIAL SYSTEMS PLAN

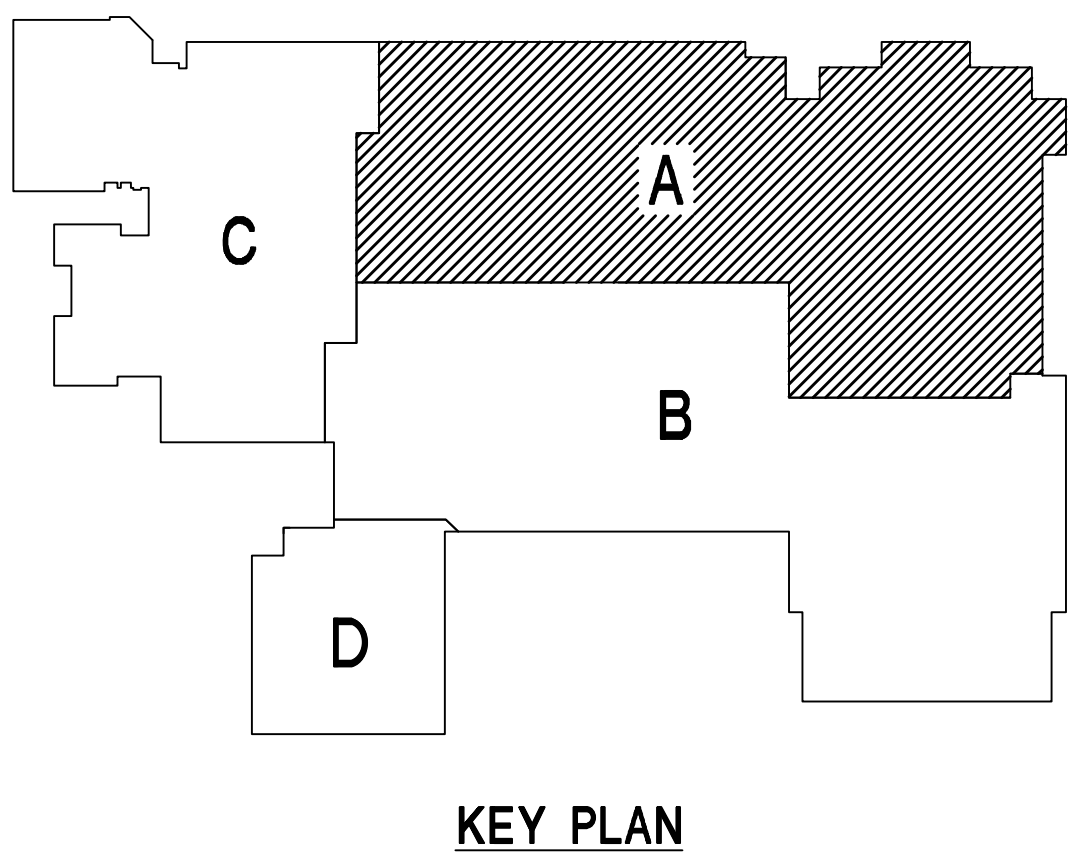
SCALE  
DRAWN: JAM  
CHECKED: RAG  
SCALE:  
DATE: 05-24-2010

E2.12

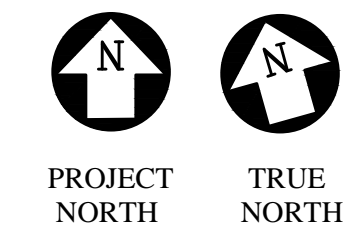


- SPECIFIC NOTES:**
1. PROVIDE AN 18"W X 2" HIGH WIRE MESH CABLE TRAY. LOCATE ABOVE THE ACCESSIBLE LAY-IN CEILING. SEE SPECS.
  2. PROVIDE A 24" WIDE X 3" HIGH WIRE MESH CABLE TRAY.
  3. FIRE STOP ALL PENETRATIONS THROUGH FIRE RATED WALLS.
  4. PROVIDE (6) 4" EMPTY CONDUITS FOR TEL, WAN & MATV SYSTEMS. RISE-UP TO THE THIRD FLOOR COMMUNICATION ROOM 205.
  5. PROVIDE 3/4" CONDUIT WITH (1) CAT. 5E. CABLE TO THE ELEVATOR CONTROLLER. FINAL CONNECTIONS AT THE ELEVATOR CONTROLLER ARE MADE BY THE ELEVATOR CONTRACTOR.
  6. DATA OUTLET FOR CONNECTION TO THE SMART BOARD. VERIFY MOUNTING HEIGHT PER ARCHITECTURAL DETAILS PRIOR TO ROUGH-IN.
  7. REFER TO UNIT A SECOND FLOOR POWER PLAN FOR THE SPECIFICATIONS FOR THE FLOOR MOUNTED BOX. COORDINATE THE LOCATION OF THESE BOXES WITH THE STRUCTURAL CONCRETE BEAMS AND THE VOLLEYBALL POSTS PRIOR TO ROUGH-IN. PROVIDE (4) RJ-45 CAT. 5E JACKS IN EACH FLOOR BOX.
  8. JUNCTION BOX #1. PROVIDE A 12"x6"x4"D. JUNCTION BOX WITH A HINGED COVER. MOUNT ABOVE THE ACCESSIBLE LAY-IN CEILING. SEE DETAIL 2 ON SHEET E0.7 FOR SYSTEM DETAILS. LOCATE ABOVE ACCESSIBLE LAY-IN CEILING.
  9. CLASSROOM JUNCTION BOX #2. SEE DETAIL 2 ON SHEET E0.7 FOR SYSTEM DETAILS.
  10. CLASSROOM JUNCTION BOX #3. SEE DETAIL 2 ON SHEET E0.7 FOR SYSTEM DETAILS. LOCATE ABOVE ACCESSIBLE LAY-IN CEILING.
  11. CLASSROOM JUNCTION BOX #4. SEE DETAIL 2 ON SHEET E0.7 FOR SYSTEM DETAILS. MOUNT @ 90° AFF.
  12. CLASSROOM JUNCTION BOX #5. SEE DETAIL 2 ON SHEET E0.7 FOR SYSTEM DETAILS. MOUNT AT 90° AFF.
  13. CLASSROOM JUNCTION BOX #6. SEE DETAIL 2 ON SHEET E0.7 FOR SYSTEM DETAILS. MOUNT AT 90° AFF.
  14. CLASSROOM JUNCTION BOX #7. SEE DETAIL 2 ON SHEET E0.7 FOR SYSTEM DETAILS. MOUNT AT 16" AFF.
  15. CLASSROOM JUNCTION BOX #8. SEE DETAIL 2 ON SHEET E0.7 FOR SYSTEM DETAILS. MOUNT AT 16" AFF.
  16. CLASSROOM JUNCTION BOX #9. SEE DETAIL 2 ON SHEET E0.7 FOR SYSTEM DETAILS. MOUNT AT 16" AFF.
  17. CLASSROOM JUNCTION BOX #10. SEE DETAIL 2 ON SHEET E0.7 FOR SYSTEM DETAILS. MOUNT AT 16" AFF ADJACENT TO THE TEACHERS WORKSTATION.
  18. JUNCTION BOX FOR CEILING MOUNTED PROJECTOR. VERIFY EXACT LOCATION, PRIOR TO ROUGH-IN.
  19. PROVIDE (6) 4" EMPTY CONDUITS SLEEVES WITH PULL CORDS.
  20. NOT USED.
  21. PROVIDE A MASTER INTERCOM STATION WITH A TALK BUTTON, OFF BUTTON, AND DOOR RELEASE BUTTON, APHONIELEEM. WHEN THE REMOTE INTERCOM STATION, LOCATED AT THE FREIGHT ELEVATOR LOBBY, SIGNALS THE MASTER INTERCOM STATION, THE STAFF SHALL PRESS THE DOOR RELEASE BUTTON THAT WILL SEND POWER TO THE DOOR RELEASE STRIKES AT THE GROUND FLOOR, MAIN LOBBY 02 DOUBLE DOORS. SEE SHEET 2.11.
  22. PROVIDE ALL 120V. POWER WIRING IN 3/4" AND LOW VOLTAGE WIRING IN 3/4". TO THE REMOTE INTERCOM STATION FOR A FULLY OPERABLE SYSTEM.

- GENERAL NOTES:**
1. ALL VOICE/DATA OUTLET WIRING (CAT 5E CABLES SHALL BE ROUTED TO COMMUNICATIONS ROOM 165 AND CONNECTED TO A 48 PORT PATCH PANEL LOCATED AT THE EQUIPMENT RACKS. SEE SHEET E4.02 FOR DETAILS.)



1 UNIT A SECOND FLOOR SPECIAL SYSTEMS PLAN  
SCALE: 1/8" = 1'-0"



ADDENDUM 2  
ATTACHMENT 52

**ASSOCIATED DESIGN GROUP, INC.**  
CONSULTING ENGINEERS

**CORPORATE OFFICE**  
114 Toledo Drive  
Lafayette, Louisiana 70506  
(337) 284-9710

**NEW ORLEANS BRANCH**  
1010 Common St.  
Suite 8405  
New Orleans, LA 70112  
(504) 561-8333

Project # 02193