

REVISIONS	BY
06-22-10	ADG
07-12-10	ADG

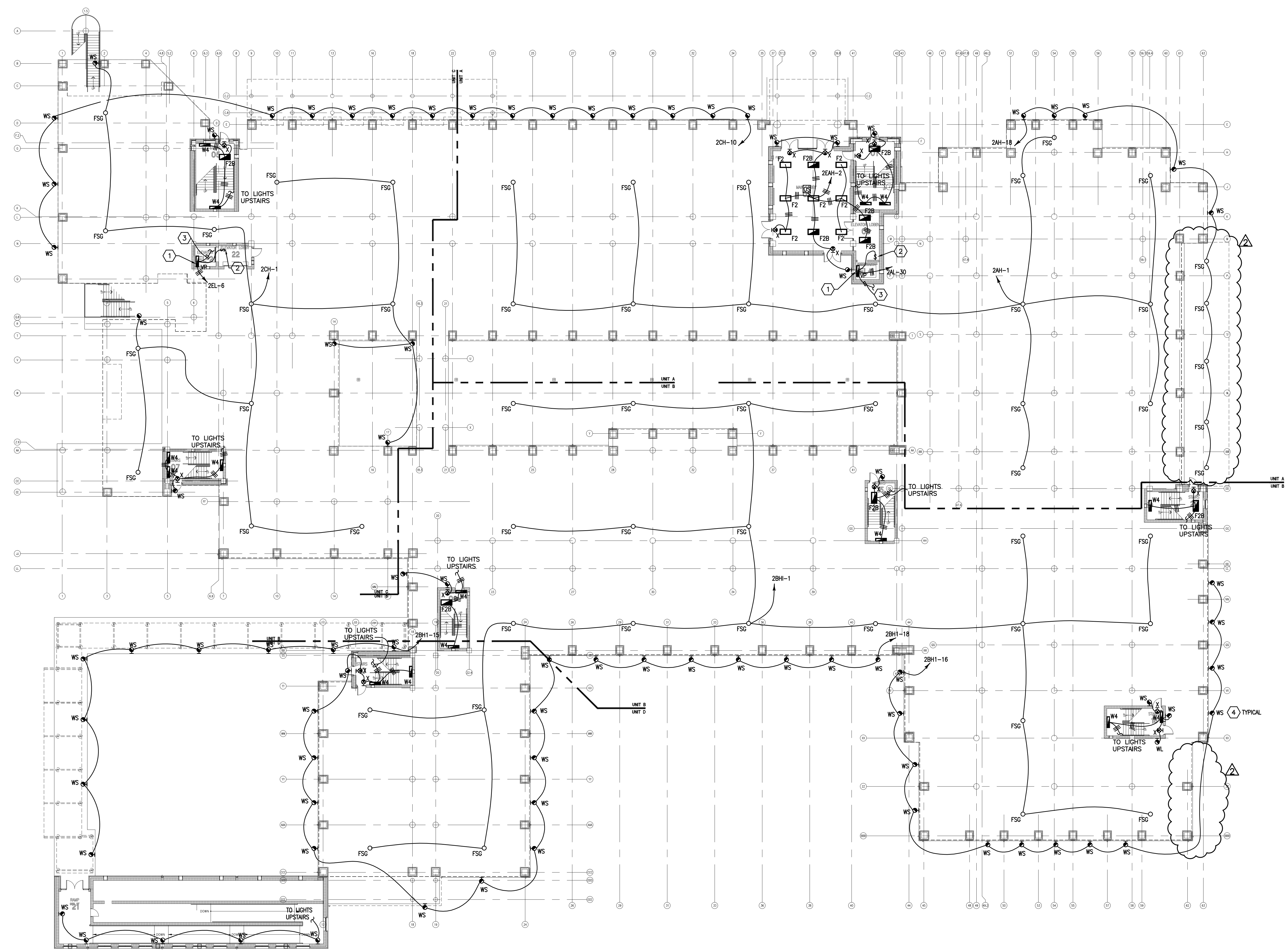
SPECIFIC NOTES:

- 1) MOUNT LIGHTING FIXTURE IN THE ELEVATOR PIT.
- 2) MOUNT THE LIGHT SWITCH IN THE ELEVATOR PIT.
- 3) CONNECT TO THE GF/WP DUPLEX RECEPTACLE IN THE ELEVATOR PIT. SEE SHEET E2.6.
- 4) LIGHTING FIXTURE TYPE WS THE LIGHTING FIXTURE SCHEDULE ON SHEET E0.0 INDICATES THE MOUNTING HEIGHT AT 10'-0" AFF. COORDINATE THE MOUNTING HEIGHT WITH THE ARCHITECTURAL ELEVATIONS.

GENERAL NOTES:

- 1) CONNECT VOLTAGE SENSING LOAD ON ALL BATTERY BACKED BALLAST TO NON-PROGRAMMABLE SIDE OF TANDEM BREAKER ON CIRCUIT SHOWN.

CONTRACTOR MUST VERIFY AND CHECK ALL JOB DIMENSIONS, DETAILS AND SPECIFICATIONS ON SITE AND REPORT ANY ERRORS, OMISSIONS AND DISCREPANCIES BEFORE PROCEEDING.



NEW PHOENIX PRE-K THROUGH 12 SCHOOL

GROUND FLOOR LIGHTING PLAN

ADDENDUM 2
ATTACHMENT 45

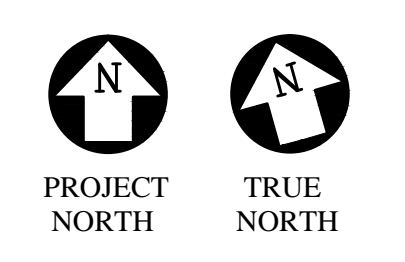
ASSOCIATED DESIGN GROUP, INC.
CONSULTING ENGINEERS

CORPORATE OFFICE
114 Toledo Drive
Lafayette, Louisiana 70506
(337) 284-8710

NEW ORLEANS BRANCH
1010 Common St.
Suite 3405
New Orleans, LA 70112
(504) 561-8533

Project # 09193

1) GROUND FLOOR LIGHTING PLAN
SCALE: 1/16" = 1'-0"



DRAWN: JAM, ABF
CHECKED: RAG
SCALE:
DATE: 05-24-2010

E2.1