

MATCHLINE
SEE SHEET C0.3

MATCHLINE
SEE SHEET C0.3

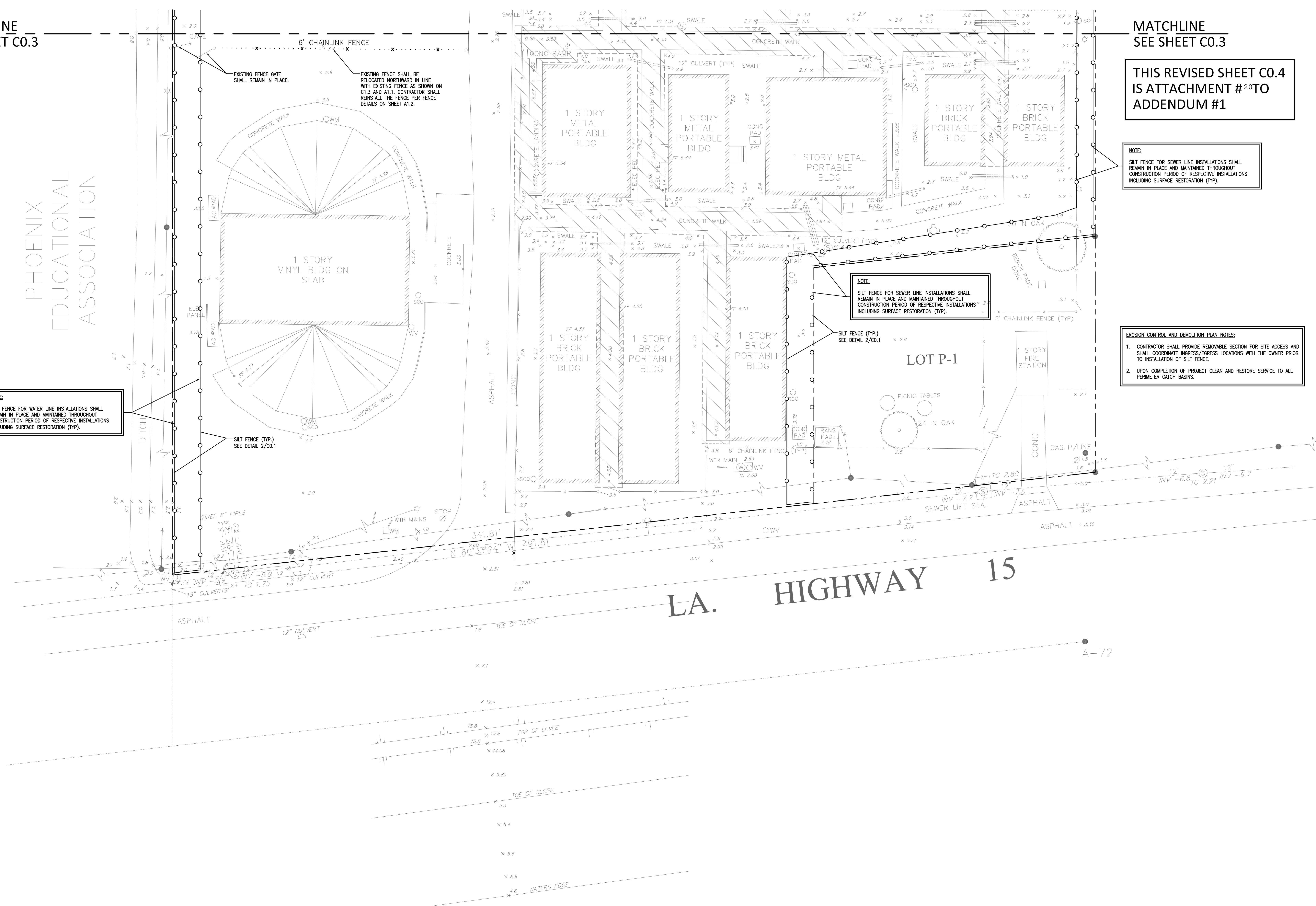
THIS REVISED SHEET C0.4
IS ATTACHMENT #20 TO
ADDENDUM #1

NOTE:
SILT FENCE FOR SEWER LINE INSTALLATIONS SHALL
REMAIN IN PLACE AND MAINTAINED THROUGHOUT
CONSTRUCTION PERIOD OF RESPECTIVE INSTALLATIONS
INCLUDING SURFACE RESTORATION (TYP).

EROSION CONTROL AND DEMOLITION PLAN NOTES:
1. CONTRACTOR SHALL PROVIDE REMOVABLE SECTION FOR SITE ACCESS AND
SHALL COORDINATE INGRESS/EGRESS LOCATIONS WITH THE OWNER PRIOR
TO INSTALLATION OF SILT FENCE.
2. UPON COMPLETION OF PROJECT CLEAN AND RESTORE SERVICE TO ALL
PERIMETER CATCH BASINS.

NOTE:
SILT FENCE FOR WATER LINE INSTALLATIONS SHALL
REMAIN IN PLACE AND MAINTAINED THROUGHOUT
CONSTRUCTION PERIOD OF RESPECTIVE INSTALLATIONS
INCLUDING SURFACE RESTORATION (TYP).

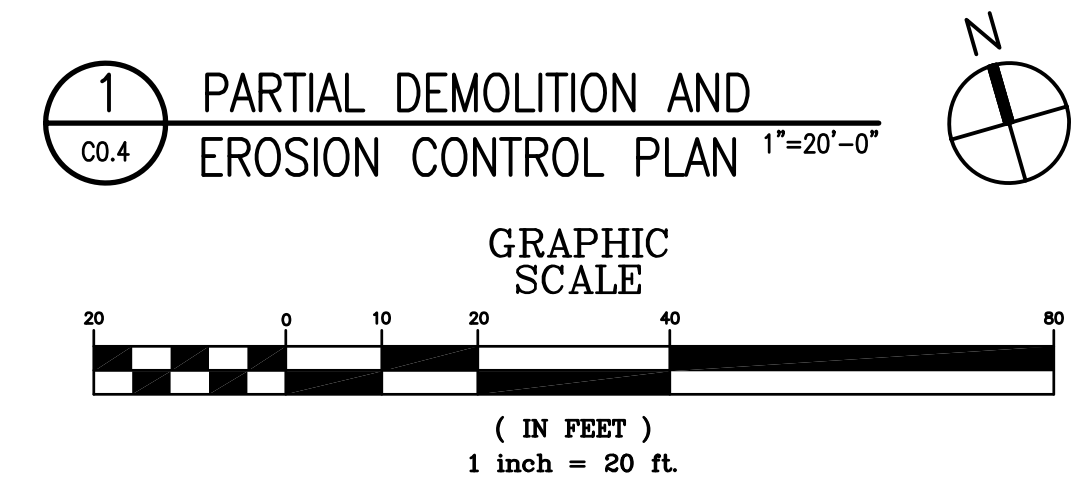
NOTE:
SILT FENCE FOR SEWER LINE INSTALLATIONS SHALL
REMAIN IN PLACE AND MAINTAINED THROUGHOUT
CONSTRUCTION PERIOD OF RESPECTIVE INSTALLATIONS
INCLUDING SURFACE RESTORATION (TYP).



PHOENIX
EDUCATIONAL
ASSOCIATION

LA. HIGHWAY 15

MISSISSIPPI RIVER
Down River

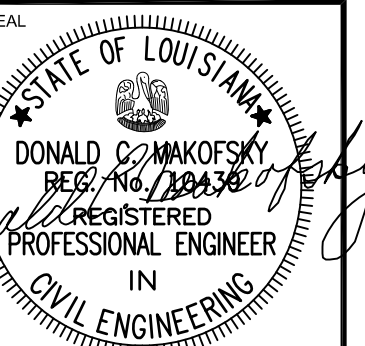


REVISIONS	BY
06/22/10	SCP

CONTRACTOR MUST VERIFY AND CHECK ALL JOB
DIMENSIONS, ERECTION AND OPERATING IN
SITE AND REPORT ANY ERRORS, OMISSIONS AND
DISCREPANCIES BEFORE PROCEEDING

NEW-PHOENIX-PRE-K-K-THROUGH-12-SCHOOL
NEW-PHOENIX-PRE-K-K-THROUGH-12-SCHOOL
12700-HWY.-39-BRAITHWAITE,-LOUISIANA-70040
FEMA-PW-4987

ATTACHMENT
NUMBER 20
TO ADDENDUM
NUMBER ONE



04-23-10
DRAWN: SCP
CHECKED: SCP
SCALE: AS NOTED
DATE: 05/21/2010

C0.4
MORPHY
MAKOFSKY
INCORPORATED
CONSULTING ENGINEERS
(504) 488-1317
JOB NO. 09157
© 2009