

LIFE SAFETY 1ST FLOOR PLAN

**LIFE SAFETY GENERAL NOTES**

1. FIRE EXTINGUISHER NOTE: FIRE EXTINGUISHERS MEET U.L. APPROVED TYPE, SIZE AND LOCATION MEETS THE REQUIREMENTS OF NFPA 10 (LAC 17,4-4.5) (MIN. 2A-10B-C).
2. AN APPROVED SUPERVISED AUTOMATIC SPRINKLER SYSTEM IS TO BE INSTALLED IN ACCORDANCE WITH NFPA 10:18.3.5 QUICK RESPONSE HEADS.
3. DIRECTIONAL EXIT SIGNAGE TO BE CONNECTED TO EMERGENCY POWER.
4. INTERIOR FINISHES ARE TO COMPLY WITH NFPA 10:18.3.3 (0-75) FLAMESPREAD WITH SMOKE DEVELOPMENT OF (0-450).
5. FIRE ALARM SYSTEM TO BE IN ACCORDANCE WITH NFPA 10:18.3.4. (SYSTEM IS REMOTELY MONITORED FOR EMERGENCY FORCES NOTIFICATION).
6. FIRE RESISTIVE RATED BUILDING ASSEMBLIES SHALL BE OF A DESIGN THAT HAS BEEN TESTED AND LISTED BY AN APPROVED TESTING LABORATORY FOR THE INTENDED APPLICATION.
7. AT FIRE RATED STAIRS WHERE ADJOINING WALLS CONTAIN WINDOWS WITHIN 10' A WATER CURTAIN SHALL BE PROVIDED BY THE FIRE SPRINKLER SYSTEM.

ASSEMBLY RATINGS:		1ST FLOOR SQUARE FOOTAGE: 52,000	
COLUMNS (W)	IHR UL# V715	2ND FLOOR SQUARE FOOTAGE	44,500
TUBE	IHR UL# V710	TOTAL SQUARE FOOTAGE	96,500
BEAMS	IHR UL# N782		
TRUSS	IHR UL# S735	OCCUPANCY LOAD 1ST FLOOR	1,102
FLOOR ASSEMBLY	IHR UL# D779	OCCUPANCY LOAD 2ND FLOOR	1,204
ROOF ASSEMBLY	IHR UL# P732	OCCUPANCY LOAD TOTAL	2,306



**LEGEND**

	EXIT LIGHT/SIGNAGE
	EXIT
	EXIT ACCESS CORRIDOR
	INDICATES EGRESS STAIRS WHICH MEET 1 HR. FIRE RATING AND DISCHARGE TO GROUND FLOOR.
	FIRE EXTINGUISHER (LOCATIONS TO COMPLY WITH NFPA 10, ARCHITECT TO CONFIRM FINAL LOCATIONS IN FIELD)

**WALL CONSTRUCTION:**

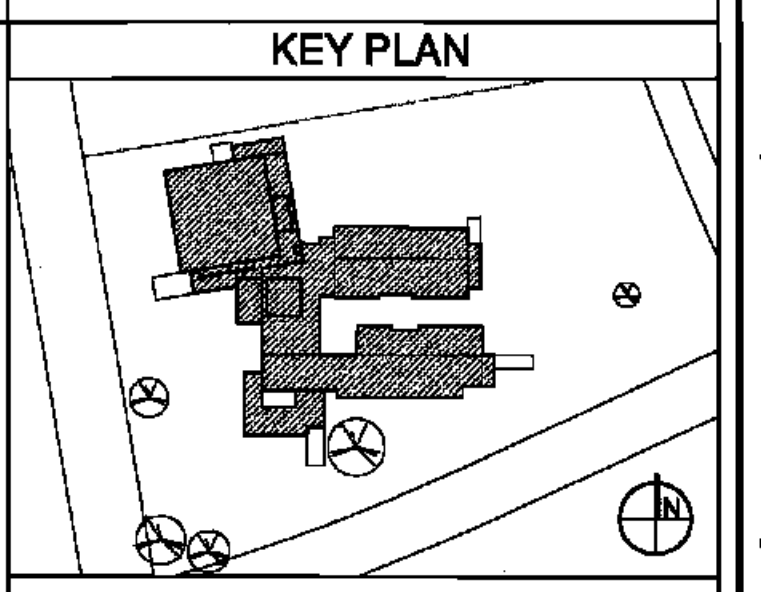
	ONE HOUR FIRE RATED PARTITION
	SMOKE PARTITION

**LIFE SAFETY BLDG INFORMATION:**

OCCUPANCY CLASSIFICATION:  
 INTERNATIONAL MIXED: GROUP E & A  
 BUILDING CODE: NEW EDUCATIONAL  
 NFPA: Varies, 0, 1, & 2HR

INTERNATIONAL BUILDING CODE: TYPE IIA  
 NFPA: Varies, 0, 1, & 2HR

TOTAL BUILDING SQUARE FOOTAGE: 96,500 SQ.FT.  
 SPRINKLERED: YES (SUPERVISED)  
 FIRE ALARM: YES (REMOTE MONITORING)



**BIDDING DOCUMENTS** 05/04/10

NO. REVISION	DATE
PARKVIEW SCHOOL 4617 MIRABEAU AVE. NEW ORLEANS, LA 70126	PROJECT
09009	JOB NO
LIFE SAFETY PLAN	TITLE
1/16" = 1'-0"	SCALE
MMW/AB / CW	DRAWN/CHK

**LS1.0**  
FULLY SPRINKLERED BUILDING

**RWA**  
ROZAS · WARD ARCHITECTS  
A PROFESSIONAL CORPORATION www.rozas-ward.com  
1100 POYDRAS ST. SUITE 3550 NO LA 70183 504 524 4375

ONE AND ONE HALF INCHES = ONE FOOT  
 ONE HALF INCH = ONE FOOT  
 ONE QUARTER INCH = ONE FOOT  
 ONE EIGHT INCH = ONE FOOT