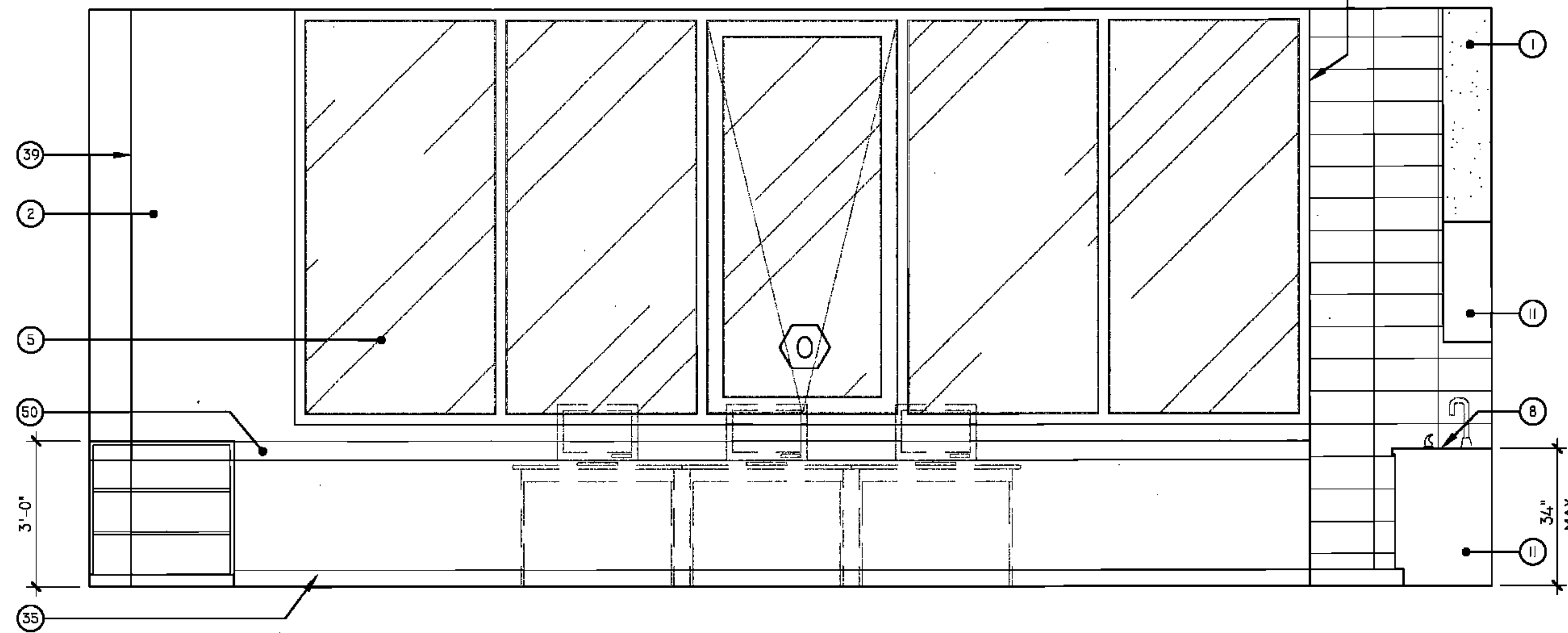
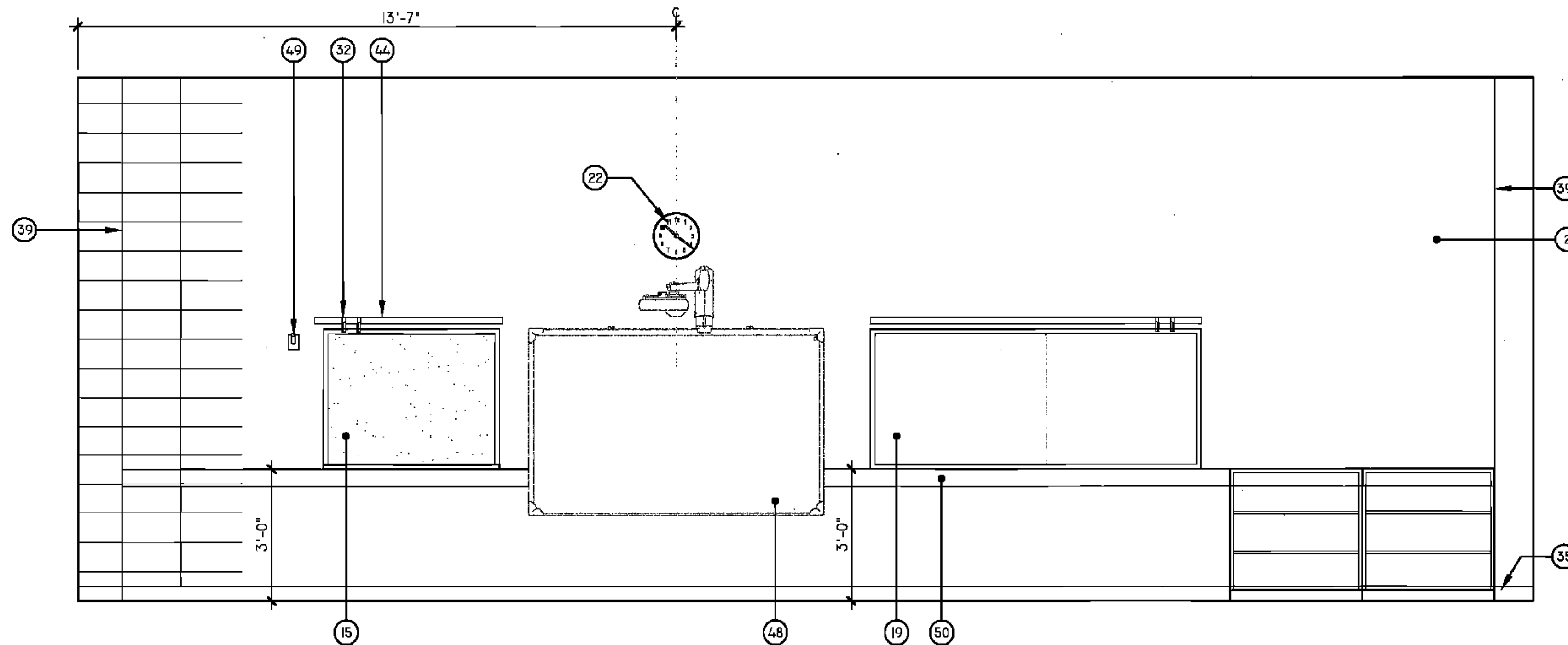


SELF CONTAINED CLASSROOM PLAN



1
A6.23B
NORTH ELEVATION - SELF CONTAINED CLASSROOM
RM. # 705



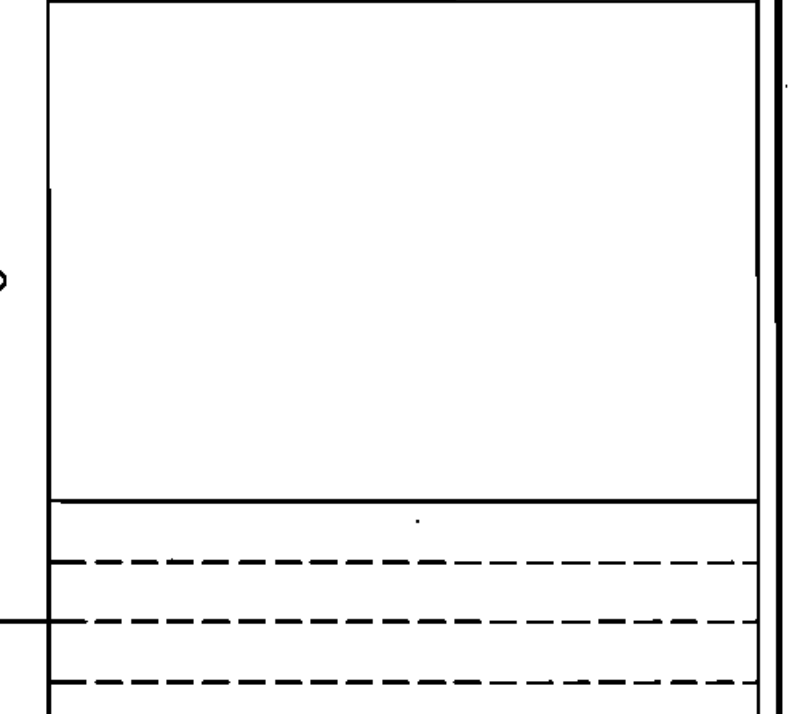
2
A6.23B
WEST ELEVATION - SELF CONTAINED CLASSROOM
RM. # 705

RSD
LOUISIANA

LEGEND

- | | |
|------------------------------------------|----------------------------------------------------|
| 1 GYPSUM FURDOWN (RE: FIN. SCH.) | 36 SHOWER CURTAIN ROD |
| 2 CMU (RE: FIN. SCH.) | 37 EDGE OF PLASTER |
| 3 ACOUSTICAL WALL PANELS (RE: FIN. SCH.) | 38 PARTITION MNTD DISP. (NIC) |
| 4 WINDOW SYSTEM (RE: WIN. SCH.) | 39 WALL MOUNTED SINK |
| 5 LIGHT FIXTURE (RE: ELEC) | 40 UNDERMOUNT SINK |
| 6 LAMINATE SURFACE COUNTER TOP | 41 UTILITY SINK |
| 7 ETCHED GLASS SIGNAGE (RE: SPECS) | 42 TACK STRIP |
| 8 BACKSLASH TO MATCH COUNTER | 43 PRECAST CONCRETE (RE: STR DWGS) |
| 9 WOOD CABINETS W/ LAMINATE FINISH | 44 PIN-MOUNTED SIGNAGE |
| 10 GLASS INSERT | 45 SAFETY SHOWER, RE: SPECS |
| 11 PAINTED CABINETS/ SHELVES | 46 ELECTRONIC WHITE BOARD |
| 12 MIRROR | 47 FLAG HOLDER |
| 13 TACK BOARD | 48 SURFACE RACEWAY |
| 14 BLACK EPOXY RESIN COUNTER TOP | 49 ROOM PLAQUE |
| 15 LIGHT SHELF | 50 DECORATIVE HANDRAIL SYSTEM (RE: SPECS) |
| 16 VENTHOOD | 51 MOTORIZED WINDOW SHADE |
| 17 MARKER BOARD | 52 STAGE CURTAINS |
| 18 SOAP DISPENSER (NIC) | 53 (RE: FIN SCH & FLR PLAN) |
| 19 WALL CLOCK | 54 MOTORIZED BLEACHERS W/ INTEGRAL HANDRAIL SYSTEM |
| 20 WALL PADS (RE: FIN. SCH.) | 55 CEILING MNTD RETRACTABLE PROJECTION SCREEN |
| 21 PIN MOUNTED SIGNAGE | 56 DOOR (RE: DOOR SCH.) |
| 22 TOWEL DISPENSER | 57 NOT USED |
| 23 CLUBBIES | 58 BASKETBALL BACKSTOP |
| 24 EDGE OF WALL | 59 TRUSSES (RE: STRUCTURAL) |
| 25 MAP HOOKS | 60 SCOREBOARD (RE: SPECS) |
| 26 SHOWER SEAT | 61 ELECTRIC DIVIDER CURTAIN SECURED TO STRUCTURE. |
| 27 WATER FOUNTAIN | 62 RECESSED WALL |
| 28 FLR BASE (RE: FIN SCH) | 63 LIGHTWGT CURTAIN (RE: FIN SCH & FR PLAN) |
| 29 SOAP DISH (NIC) | 64 SUSPENDED PIPE GRID SYSTEM SECURED TO STRUC |
| 30 METAL STORAGE RACK | 65 POWER JUNCTION BOX SECURED TO PIPE GRID SYS. |
| | 66 MOTOR OPERATED FOLDING PARTITION WALL |
| | 67 PARTITION STACK STORAGE |
| | 68 CIRCULATION DESK |
| | 69 LIBRARY SHELVING SYSTEM |

KEY PLAN



BIDDING DOCUMENTS		05/04/10
NO. REVISION	DATE	
PROJECT		
PARKVIEW SCHOOL 4617 MIRABEAU AVE. NEW ORLEANS, LA 70128		
09009	JOB NO	
INTERIOR ELEVATIONS		TITLE
1/2" = 1'-0"		SCALE
MMM/AB / CW	DRAWN/CHK	

A-6.23B

FULLY SPRINKLERED BUILDING

RWA
ROZAS-WARD ARCHITECTS

A PROFESSIONAL CORPORATION www.rozas-ward.com
1100 FOYDRAS ST. SUITE 3550 NO LA 70168 504 524 4375

ONE AND ONE HALF INCHES = ONE FOOT
ONE QUARTER INCH = ONE FOOT
ONE EIGHT INCH = ONE FOOT