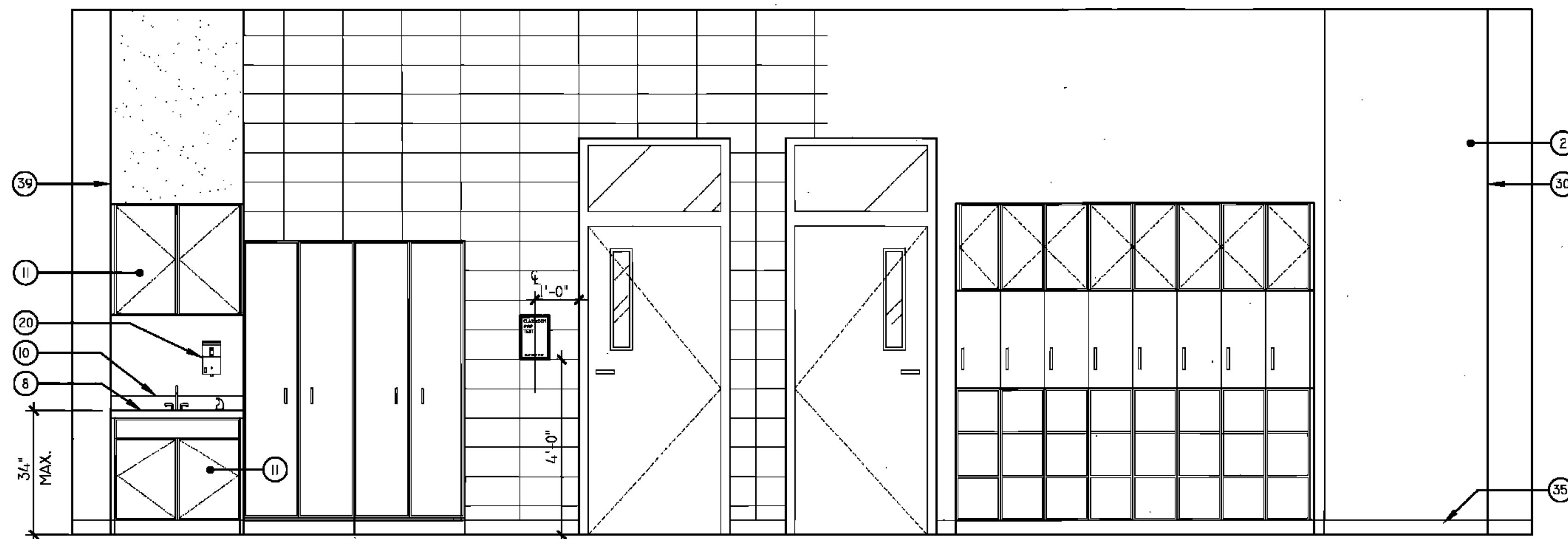


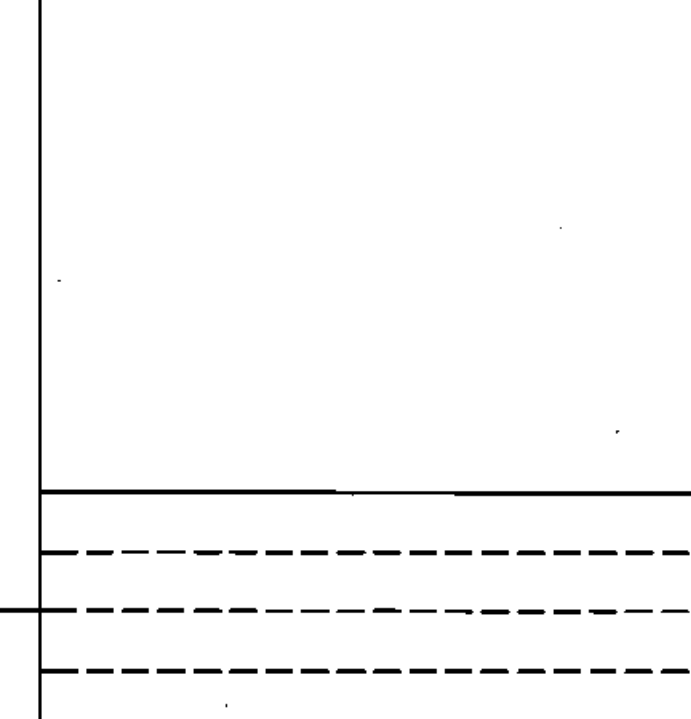
1
A-6.23A
SOUTH ELEVATION - SELF CONTAINED CLASSROOM
RM. # 705



2
A-6.23A
EAST ELEVATION - SELF CONTAINED CLASSROOM
RM. # 705

- LEGEND**
- | | |
|--|---|
| 1 GYPSUM FLURDOWN (RE: FIN. SCH.) | 31 SHOWER CURTAIN ROD |
| 2 CMU (RE: FIN. SCH.) | 32 EDGE OF PILASTER |
| 3 ACOUSTICAL WALL PANELS (RE: FIN. SCH.) | 33 PARTITION MNTD DISP. (NIC) |
| 4 WINDOW SYSTEM (RE: WIN. SCH.) | 34 WALL MOUNTED SINK |
| 5 LIGHT FIXTURE (RE: ELEC) | 35 UNDERMOUNT SINK |
| 6 LAMINATE SURFACE COUNTER TOP | 36 UTILITY SINK |
| 7 ETCHED GLASS SIGNAGE (RE: SPECS) | 37 TACK STRIP |
| 8 BACKSPASH TO MATCH COUNTER | 38 PRECAST CONCRETE (RE: STR DWGS) |
| 9 WOOD CABINETS W/ LAMINATE FINISH | 39 PIN-MOUNTED SIGNAGE |
| 10 PAINTED CABINETS/ SHELVES | 40 SAFETY SHOWER, RE: SPECS |
| 11 MIRROR | 41 ELECTRONIC WHITE BOARD |
| 12 TACK BOARD | 42 FLAG HOLDER |
| 13 BLACK EPOXY RESIN COUNTER TOP | 43 SURFACE RACEWAY |
| 14 LIGHT SHELF | 44 ROOM PLAQUE |
| 15 VENTHOOD | 45 DECORATIVE HANDRAIL SYSTEM (RE: SPECS) |
| 16 MARKER BOARD | 46 MOTORIZED WINDOW SHADE |
| 17 SOAP DISPENSER (NIC) | 47 STAGE CURTAINS |
| 18 HAND DRYER | 48 MOTORIZED WINDOW SHADE (RE: FIN SCH & FLR PLN) |
| 19 WALL CLOCK | 49 MOTORIZED BLEACHERS W/ INTEGRAL HANDRAIL SYSTM |
| 20 WALL PADS (RE: FIN. SCH.) | 50 CEILING MNTD RETRACTABLE PROJECTION SCREEN |
| 21 SCORE BOARD | 51 DOOR (RE: DOOR SCH) |
| 22 PIN MOUNTED SIGNAGE | 52 NOT USED |
| 23 FIRE STATION | 53 BASKETBALL BACKSTOP |
| 24 TOWEL DISPENSER | 54 MECH DUCTWORK (RE:MECH) |
| 25 CUBBIES | 55 LIGHT FIXTURE (RE: ELEC) |
| 26 EDGE OF WALL | 56 TRUSSES (RE: STRUCTURAL) |
| 27 MAP HOOKS | 57 SCOREBOARD (RE: SPECS) |
| 28 SHOWER SEAT | 58 ELECTRIC DIVIDER CURTAIN SECURED TO STRUCTURE |
| 29 WATER FOUNTAIN | 59 RECESSED WALL |
| 30 FLR BASE (RE: FIN SCH) | 60 LIGHTWGT CURTAIN (REFIN SCH & FR PLN) |
| 31 SOAP DISH (NIC) | 61 SUSPENDED PIPE GRID SYSTEM SECURED TO STRUC |
| 32 METAL STORAGE RACK | 62 POWER JUNCTION BOX SECURED TO PIPE GRID SYS. |
| | 63 MOTOR OPERATED FOLDING PARTITION WALL |
| | 64 PARTITION STACK STORAGE |
| | 65 CIRCULATION DESK |
| | 66 LIBRARY SHELVING SYSTEM |

KEY PLAN



BIDDING DOCUMENTS		05/04/10
NO. REVISION	DATE	
PARKVIEW SCHOOL 4817 MIRABEAU AVE. NEW ORLEANS, LA 70126		PROJECT
09009	JOB NO	
INTERIOR ELEVATIONS		TITLE
1/2" = 1'-0"		SCALE
MMM/AB / CW	DRAWN/CHK	

A-6.23A
FULLY SPRINKLERED BUILDING

RWA
ROZAS WARD ARCHITECTS
A PROFESSIONAL CORPORATION
www.rozas-ward.com
1100 POYDRAS ST. SUITE 3550 NO LA 70183 504 524 4375

ONE AND ONE HALF INCHES = ONE FOOT
THREEONE INCH = ONE FOOT
ONE HALF INCH = ONE FOOT
ONE QUARTER INCH = ONE FOOT
ONE EIGHT INCH = ONE FOOT