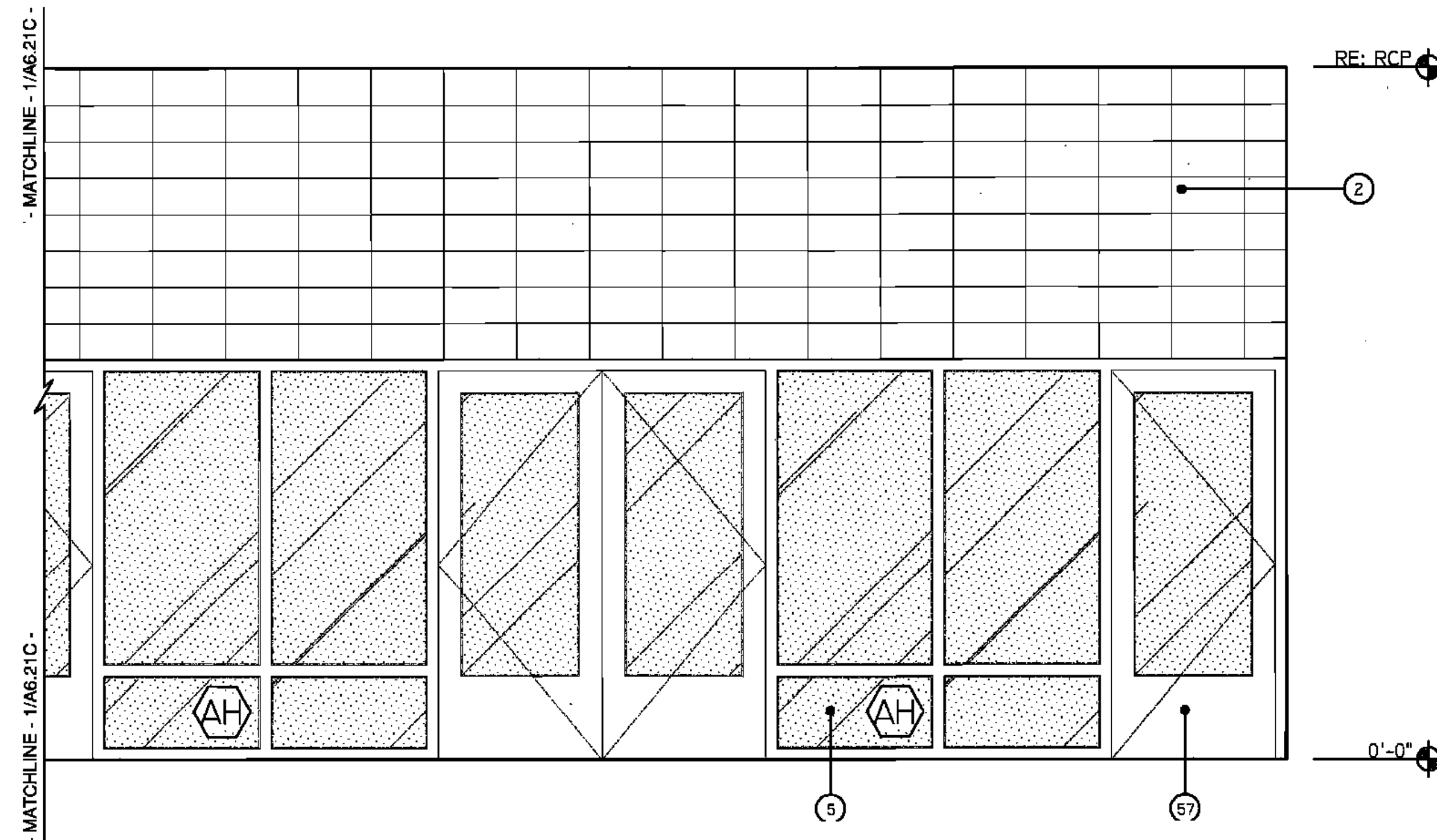


1
1/8.21C
NORTH ELEVATION - STUDENT DINING/ASSEMBLY
RM. #422

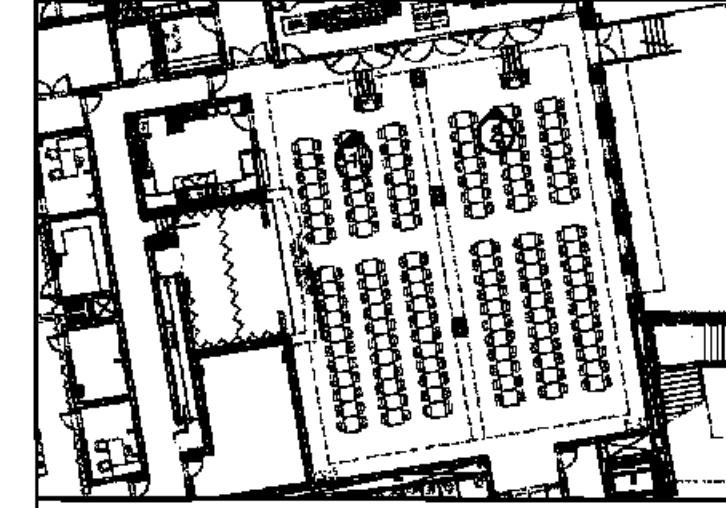


2
1/8.21C
NORTH ELEVATION - STUDENT DINING/ASSEMBLY
RM. #422

LEGEND

- | | |
|--|--|
| 1 GYPSUM FURDOWN (RE: FIN. SCH.) | 39 SHOWER CURTAIN ROD |
| 2 CMU (RE: FIN. SCH.) | 40 EDGE OF PILASTER |
| 3 ACOUSTICAL WALL PANELS (RE: FIN. SCH.) | 41 PARTITION MNTD DISP. (NIC) |
| 4 WINDOW SYSTEM (RE: WIN. SCH.) | 42 WALL MOUNTED SINK |
| 5 LIGHT FIXTURE (RE: ELEC) | 43 UNDERMOUNT SINK |
| 6 LAMINATE SURFACE COUNTER TOP | 44 UTILITY SINK |
| 7 ETCHED GLASS SIGNAGE (RE: SPECS) | 45 TACK STRIP |
| 8 BACKSPLASH TO MATCH COUNTER | 46 PRECAST CONCRETE (RE: STR DWGS) |
| 9 WOOD CABINETS W/ LAMINATE FINISH | 47 PIN-MOUNTED SIGNAGE |
| 10 PAINTED CABINETS/ SHELVES | 48 SAFETY SHOWER, RE: SPECS |
| 11 MIRROR | 49 ELECTRONIC WHITE BOARD |
| 12 TACK BOARD | 50 FLAG HOLDER |
| 13 BLACK EPOXY RESIN COUNTER TOP | 51 SURFACE RACEWAY |
| 14 LIGHT SHELF | 52 ROOM PLAQUE |
| 15 VENTHOOD | 53 DECORATIVE HANDRAIL SYSTEM (RE: SPECS) |
| 16 MARKER BOARD | 54 MOTORIZED WINDOW SHADE |
| 17 SOAP DISPENSER (NIC) | 55 STAGE CURTAINS |
| 18 HAND DRYER | 56 (RE: FIN SCH & FLR PLN) |
| 19 WALL CLOCK | 57 MOTORIZED BLEACHERS W/ INTEGRAL HANDRAIL SYSTEM |
| 20 WALL PADS (RE: FIN. SCH.) | 58 CEILING MNTD RETRACTABLE PROJECTION SCREEN |
| 21 SCORE BOARD | 59 DOOR (RE: DOOR SCH) |
| 22 PIN MOUNTED SIGNAGE | 60 NOT USED |
| 23 FIRE STATION | 61 BASKETBALL BACKSTOP |
| 24 TOWEL DISPENSER | 62 MECH DUCTWORK (RE:MECH) |
| 25 CLUBBIES | 63 LIGHT FIXTURE (RE: ELEC) |
| 26 EDGE OF WALL | 64 TRUSSES (RE: STRUCTURAL) |
| 27 MAP HOOKS | 65 SCOREBOARD (RE: SPECS) |
| 28 SHOWER SEAT | 66 ELECTRIC DIVIDER CURTAIN SECURED TO STRUCTURE |
| 29 WATER FOUNTAIN | 67 RECESSED WALL |
| 30 FLR BASE (RE: FIN SCH) | 68 LIGHTWGT CURTAIN (RE:FIN SCH & FR PLN) |
| 31 SOAP DISH (NIC) | 69 SUSPENDED PIPE GRID SYSTEM SECURED TO STRUC |
| 32 METAL STORAGE RACK | 70 POWER JUNCTION BOX SECURED TO PIPE GRID SYS. |
| | 71 MOTOR OPERATED FOLDING PARTITION WALL |
| | 72 PARTITION STACK STORAGE |
| | 73 CIRCULATION DESK |
| | 74 LIBRARY SHELVING SYSTEM |

KEY PLAN



BIDDING DOCUMENTS		05/04/10
NO. REVISION	DATE	
PARKVIEW SCHOOL 4617 MIRABEAU AVE. NEW ORLEANS, LA 70126		PROJECT
09009	JOB NO	

INTERIOR ELEVATIONS TITLE
1/2" = 1'-0" SCALE
MMM/AB / CW DRAWN/CHK

A-6.21C
FULLY SPRINKLERED BUILDING

RWA
ROZAS WARD ARCHITECTS
A PROFESSIONAL CORPORATION www.rozas-ward.com
1100 POYDRAS ST, SUITE 3650 NO LA 70163 504.524.4375

ONE AND ONE HALF INCHES - ONE FOOT
ONE INCH - ONE FOOT
ONE HALF INCH - ONE FOOT
ONE QUARTER INCH - ONE FOOT
ONE EIGHT INCH - ONE FOOT