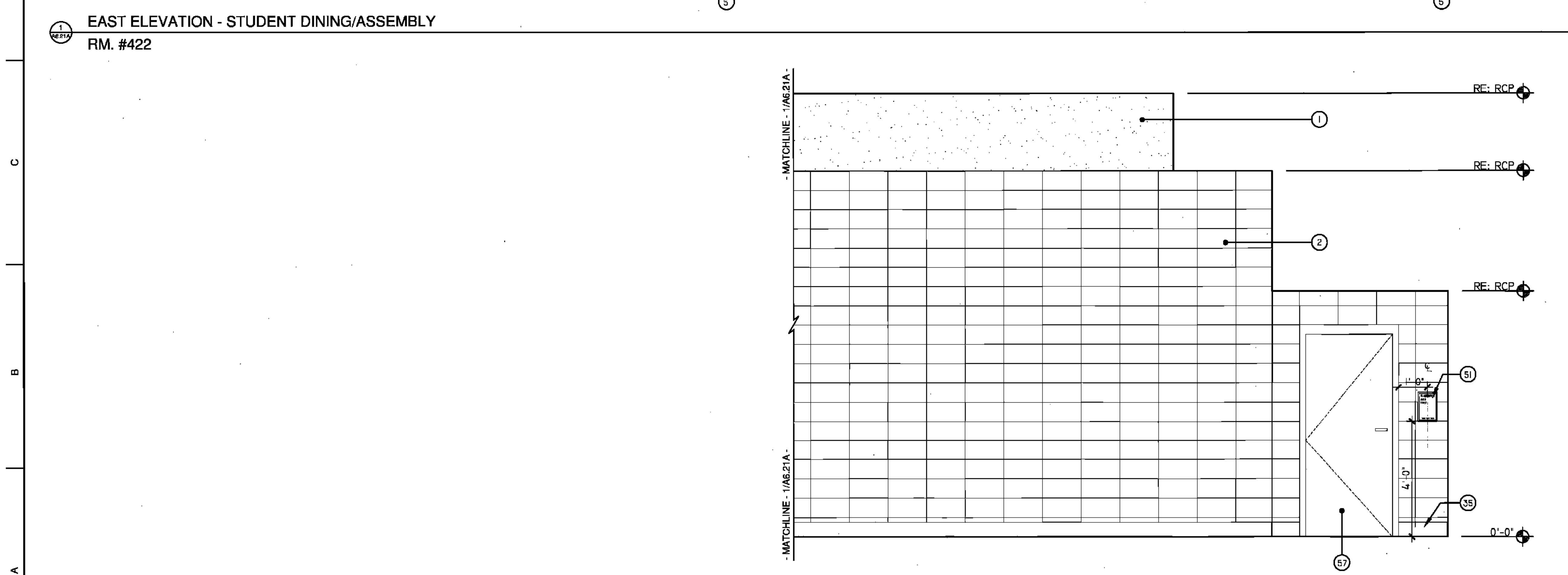


1 EAST ELEVATION - STUDENT DINING/ASSEMBLY
RM. #422



2 EAST ELEVATION - STUDENT DINING/ASSEMBLY
RM. #422

RSD
LOUISIANA

LEGEND

1 GYPSUM FURDOWN (RE: FIN. SCH.)	21 SHOWER CURTAIN ROD
2 CMU (RE: FIN. SCH.)	22 EDGE OF PILASTER
3 ACUSTICAL WALL PANELS (RE: FIN. SCH.)	23 PARTITION MNTD DISP. (NIC)
4 WINDOW SYSTEM (RE: WNL. SCH.)	24 WALL MOUNTED SINK
5 LIGHT FIXTURE (RE: ELEC)	25 UNDERMOUNT SINK
6 LAMINATE SURFACE COUNTER TOP	26 UTILITY SINK
7 ETCHED GLASS SIGNAGE (RE: SPECS)	27 TACK STRIP
8 BACKSLASH TO MATCH COUNTER	28 PRECAST CONCRETE (RE: STR DWGS)
9 WOOD CABINETS W/ LAMINATE FINISH	29 PIN-MOUNTED SIGNAGE
10 WOOD CABINETS W/ GLASS INSERT	30 SAFETY SHOWER, RE: SPECS
11 PAINTED CABINETS/ SHELVES	31 ELECTRONIC WHITE BOARD
12 MIRROR	32 FLAG HOLDER
13 TACK BOARD	33 SURFACE RACEWAY
14 BLACK EPOXY RESIN COUNTER TOP	34 ROOM PLAQUE
15 LIGHT SHELF	35 DECORATIVE HANDRAIL SYSTEM (RE: SPECS)
16 VENTHOOD	36 MOTORIZED WINDOW SHADE
17 MARKER BOARD	37 STAGE CURTAINS
18 SOAP DISPENSER (NIC)	38 (RE: FIN SCH & FLR PLN)
19 HAND DRYER	39 MOTORIZED BLEACHERS W/ INTEGRAL HANDRAIL SYSTEM
20 WALL CLOCK	40 CEILING MNTD RETRACTABLE PROJECTION SCREEN
21 WALL PADS (RE: FIN. SCH.)	41 DOOR (RE: DOOR SCH)
22 SCORE BOARD	42 NOT USED
23 PIN MOUNTED SIGNAGE	43 BASKETBALL BACKSTOP
24 FIRE STATION	44 MECH DUCTWORK (RE:MECH)
25 TOWEL DISPENSER	45 LIGHT FIXTURE (RE: ELEC)
26 CLUBBIES	46 TRUSSES (RE: STRUCTURAL)
27 EDGE OF WALL	47 SCOREBOARD (RE: SPECS)
28 MAP HOOKS	48 ELECTRIC DIVIDER CURTAIN SECURED TO STRUCTURE.
29 SHOWER SEAT	49 RECESSED WALL
30 WATER FOUNTAIN	50 LIGHTWIGHT CURTAIN (REFIN SCH & FR PLN).
31 FLR BASE (RE: FIN SCH)	51 SUSPENDED PIPE GRID SYSTEM SECURED TO STRUC.
32 SOAP DISH (NIC)	52 POWER JUNCTION BOX SECURED TO PIPE GRID SYS.
33 METAL STORAGE RACK	53 MOTOR OPERATED FOLDING PARTITION WALL
	54 PARTITION STACK STORAGE
	55 CIRCULATION DESK
	56 LIBRARY SHELVING SYSTEM

KEY PLAN

BIDDING DOCUMENTS		05/04/10
NO.	REVISION	DATE
PARKVIEW SCHOOL 4617 MIRABEAU AVE. NEW ORLEANS, LA 70126		PROJECT
09009		JOB NO
INTERIOR ELEVATIONS		TITLE
1/2" = 1'-0"		SCALE
MMM/AB / CW		DRAWN/CHK

A-6.21A

FULLY SPRINKLERED BUILDING

ROZAS WARD ARCHITECTS

A PROFESSIONAL CORPORATION www.rozas-ward.com

1100 POYDRAS ST, SUITE 3600 NO LA 70168 504 524 4376

ONE AND ONE HALF INCHES = ONE FOOT
THREEONE INCH = ONE FOOT
ONE HALF INCH = ONE FOOT
ONE QUARTER INCH = ONE FOOT
ONE EIGHT INCH = ONE FOOT