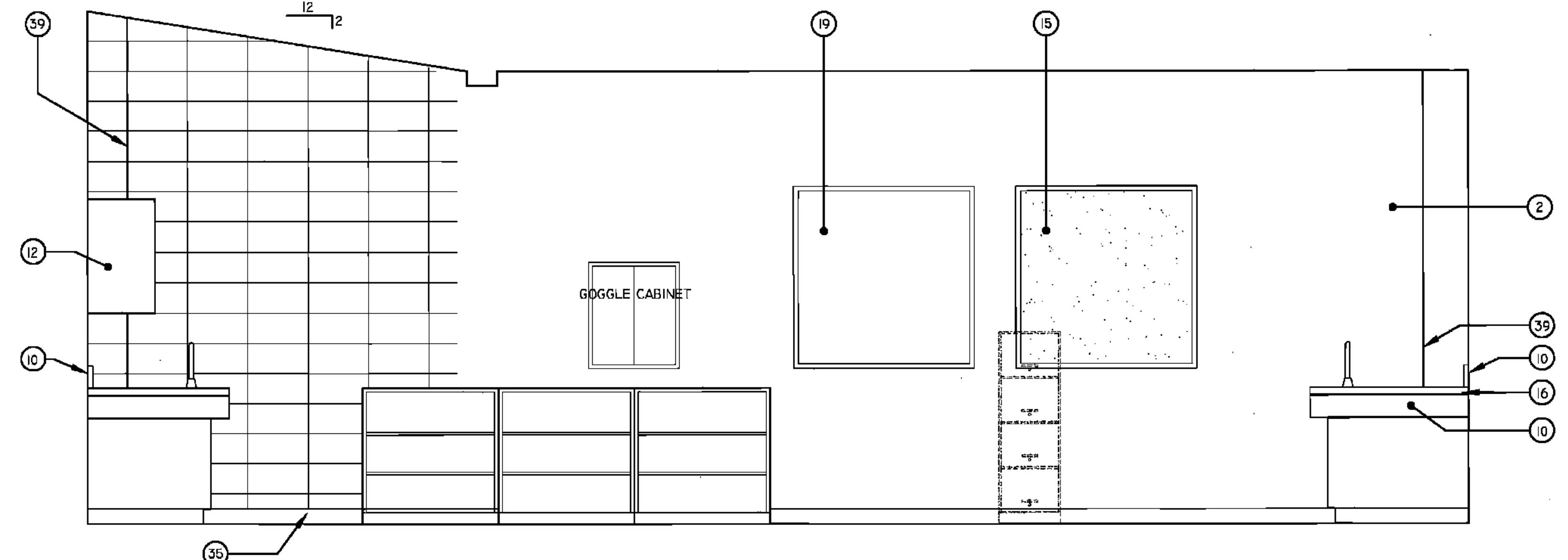
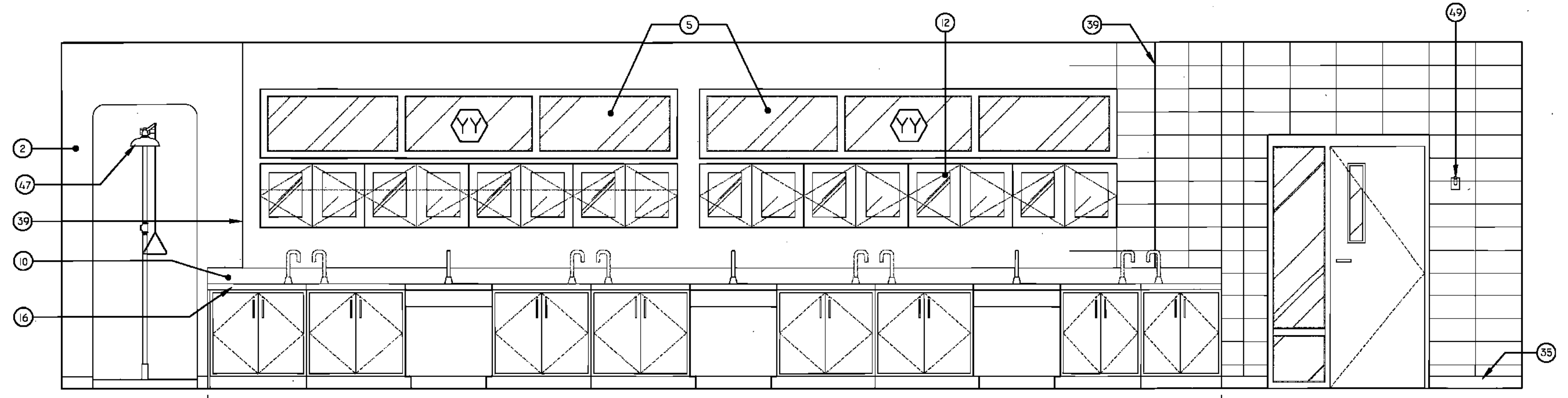


TYPICAL SCIENCE ROOM PLAN



TYPICAL SCIENCE CLASSROOM ELEVATION - LOOKING TOWARDS BACK OF CLASSROOM
RM. # 315



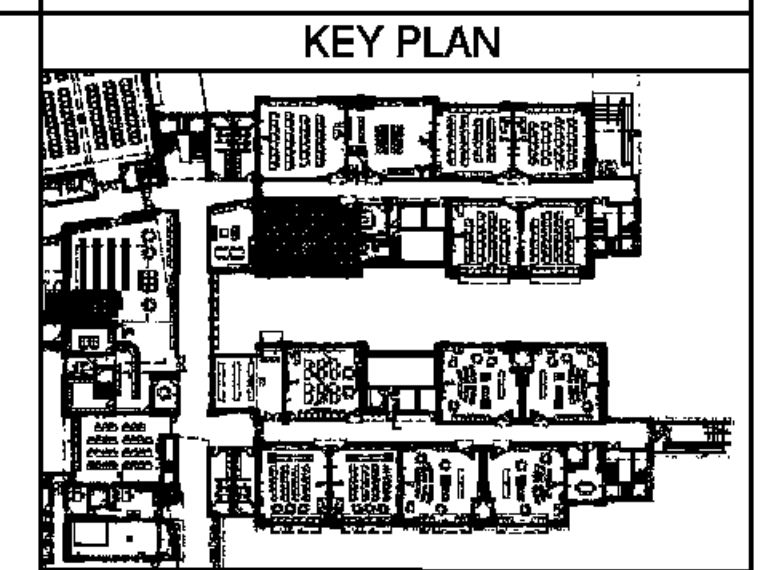
TYPICAL SCIENCE CLASSROOM ELEVATION - LOOKING TOWARDS CORRIDOR
RM. # 315

SCIENCE FURNITURE
G.C. TO COORDINATE ALL SCIENCE FURNITURE & EQUIPMENT WITH ELECTRICAL, GAS AND PLUMBING BEFORE INSTALLING



LEGEND

1 GYPSUM FURDOWN (RE: FIN. SCH.)	31 SHOWER CURTAIN ROD
2 CMU (RE: FIN. SCH.)	32 EDGE OF PILASTER
3 ACOUSTICAL WALL	33 PARTITION MNTD DISP. (NIC)
4 PANELS (RE: FIN. SCH.)	34 WALL MOUNTED SINK
5 WINDOW SYSTEM (RE: WIN. SCH.)	35 UNDERMOUNT SINK
6 LIGHT FIXTURE (RE: ELEC)	36 UTILITY SINK
7 LAMINATE SURFACE	37 TACK STRIP
8 COUNTER TOP	38 PRECAST CONCRETE (RE: STR DWGS)
9 ETCHED GLASS SIGNAGE (RE: SPECS)	39 PIN MOUNTED SIGNAGE
10 BACKSPASH TO MATCH COUNTER	40 SAFETY SHOWER, RE: SPECS
11 WOOD CABINETS W/ LAMINATE FINISH	41 ELECTRONIC WHITE BOARD
12 WOOD CABINETS W/ GLASS INSERT	42 FLAG HOLDER
13 PAINTED CABINETS/ SHELVES	43 SURFACE RACEWAY
14 MIRROR	44 ROOM PLAQUE
15 TACK BOARD	45 DECORATIVE HANDRAIL SYSTEM (RE: SPECS)
16 BLACK EPOXY RESIN COUNTER TOP	46 MOTORIZED WINDOW SHADE (RE: FIN SCH & FLR FLN)
17 LIGHT SHELF	47 STAGE CURTAINS
18 VENTHOOD	48 MOTORIZED BLEACHERS W/ INTEGRAL HANDRAIL SYSTEM
19 MARKER BOARD	49 CEILING MNTD RETRACTABLE PROJECTION SCREEN
20 SOAP DISPENSER (NIC)	50 DOOR (RE: DOOR SCH)
21 HAND DRYER	51 NOT USED
22 WALL CLOCK	52 BASKETBALL BACKSTOP
23 WALL PADS (RE: FIN. SCH.)	53 MECH DUCTWORK (RE:MECH)
24 SCORE BOARD	54 TRUSSES (RE: STRUCTURAL)
25 PIN MOUNTED SIGNAGE	55 SCOREBOARD (RE: SPECS)
26 FIRE STATION	56 ELECTRIC DIVIDER CURTAIN SECURED TO STRUCTURE.
27 TOWEL DISPENSER	57 RECESSED WALL
28 CLUBBIES	58 LIGHTWGT CURTAIN (REFIN SCH & FR FLN)
29 EDGE OF WALL	59 SUSPENDED PIPE GRID SYSTEM SECURED TO STRUC
30 MAP HOOKS	60 POWER JUNCTION BOX SECURED TO PIPE GRID SYS.
31 SHOWER SEAT	61 MOTOR OPERATED FOLDING PARTITION WALL
32 WATER FOUNTAIN	62 PARTITION STACK STORAGE
33 FLR BASE (RE: FIN SCH)	63 CIRCULATION DESK
34 SOAP DISH (NIC)	64 LIBRARY SHELVING SYSTEM
35 METAL STORAGE RACK	



BIDDING DOCUMENTS		05/04/10
NO. REVISION	DATE	
PARKVIEW SCHOOL 4617 MIRABEAU AVE. NEW ORLEANS, LA 70126		PROJECT
09009	JOB NO	

INTERIOR ELEVATIONS		TITLE
1/2" = 1'-0"		SCALE
MMM/AB / CW	DRAWN/CHK	

A-6.19
FULLY SPRINKLERED BUILDING

RWA
ROZAS · WARD ARCHITECTS
A PROFESSIONAL CORPORATION www.rozas-ward.com
1100 POYDRAS ST., SUITE 2550 NO LA 70183 504 524 4378

ONE AND ONE HALF INCHES = ONE FOOT
ONE INCH = ONE FOOT
ONE HALF INCH = ONE FOOT
ONE QUARTER INCH = ONE FOOT
ONE EIGHT INCH = ONE FOOT