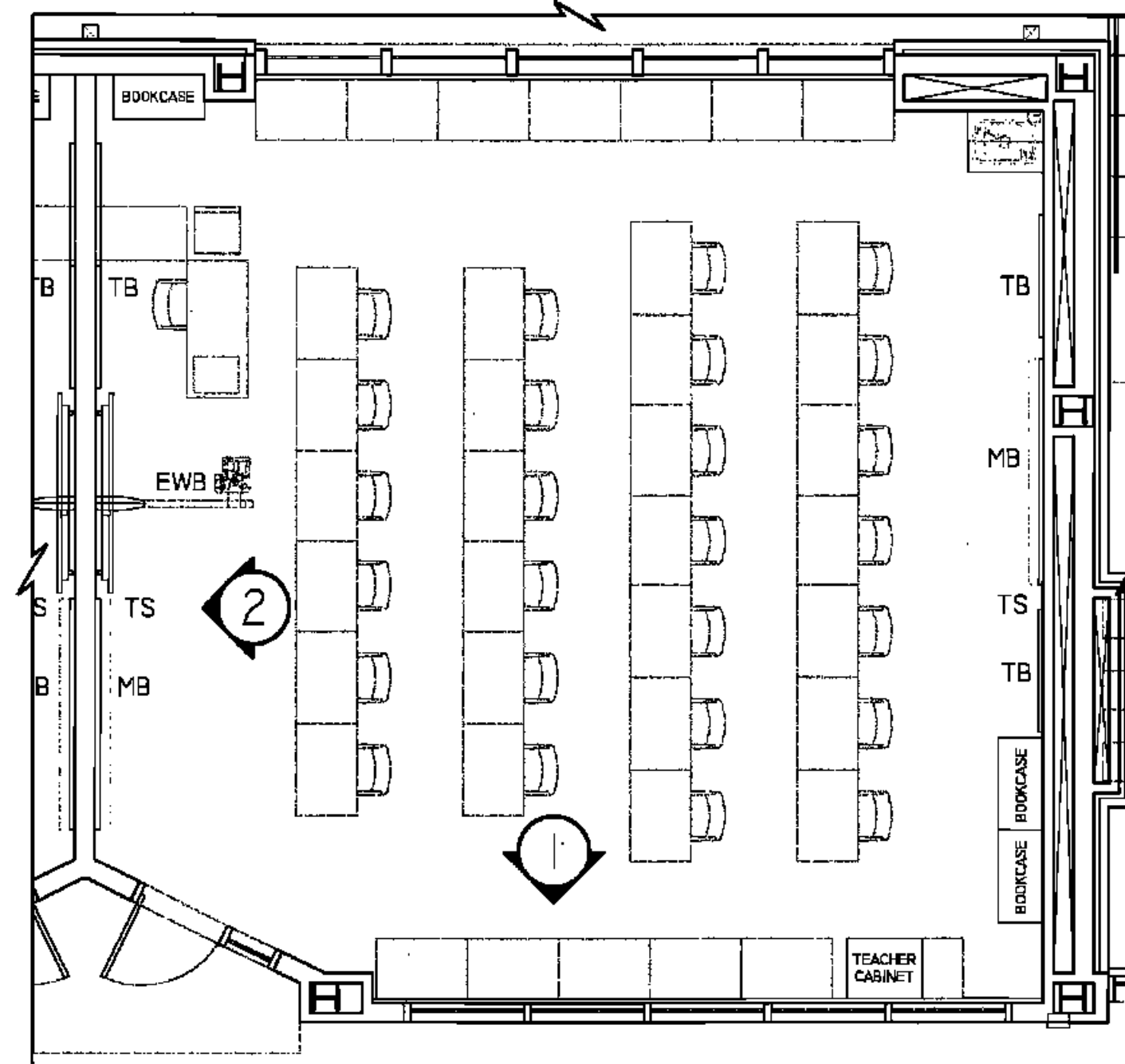
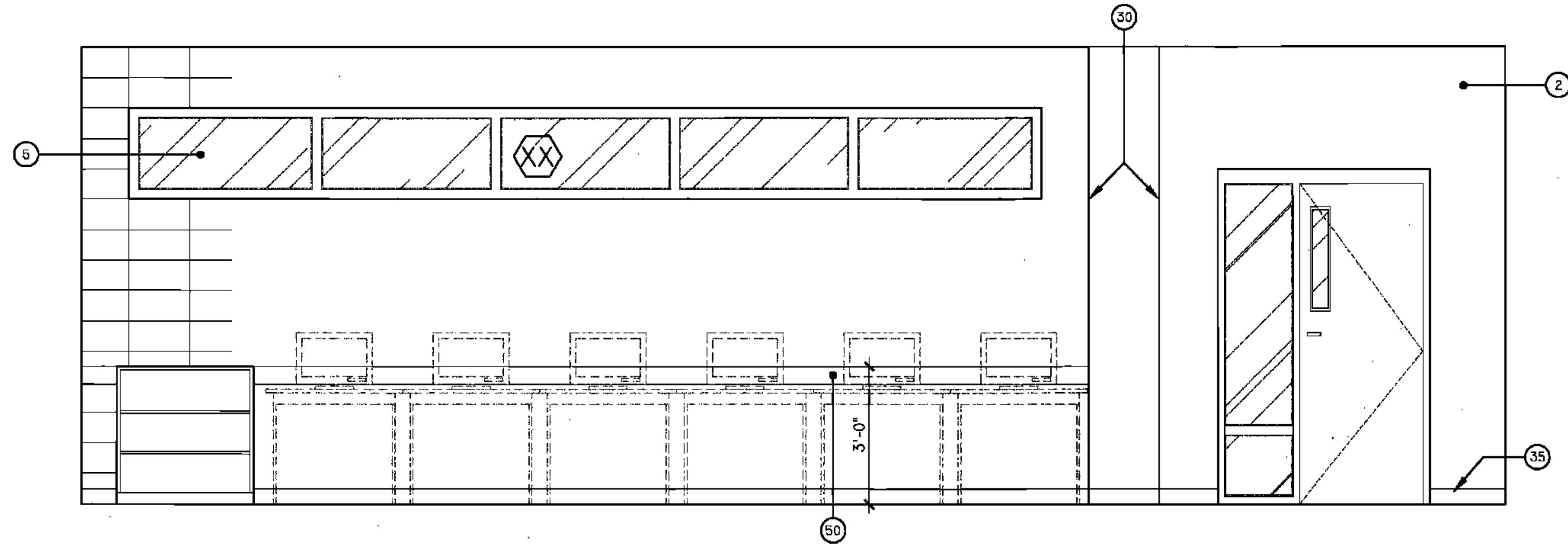


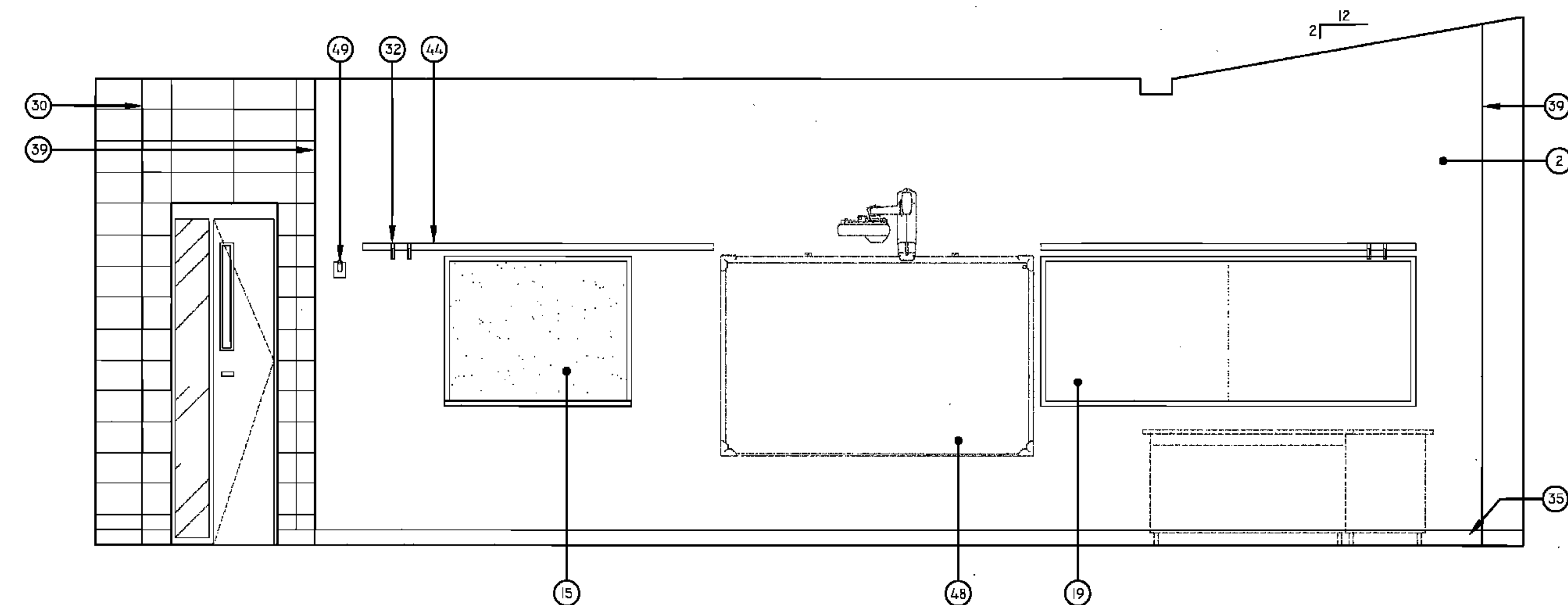
R:\Projects\2009\Projects\090009 - Parkview Elementary\04 Construction Documents\01 Drawings\A-6.0 INTERIOR ELEVATIONS.dwg, 5/2/2010 12:50:52 PM, DWG To PDF.pc3



TYPICAL CLASSROOM PLAN



TYPICAL 2nd - 8th GRADE CLASSROOM ELEVATION - LOOKING TOWARDS HALL

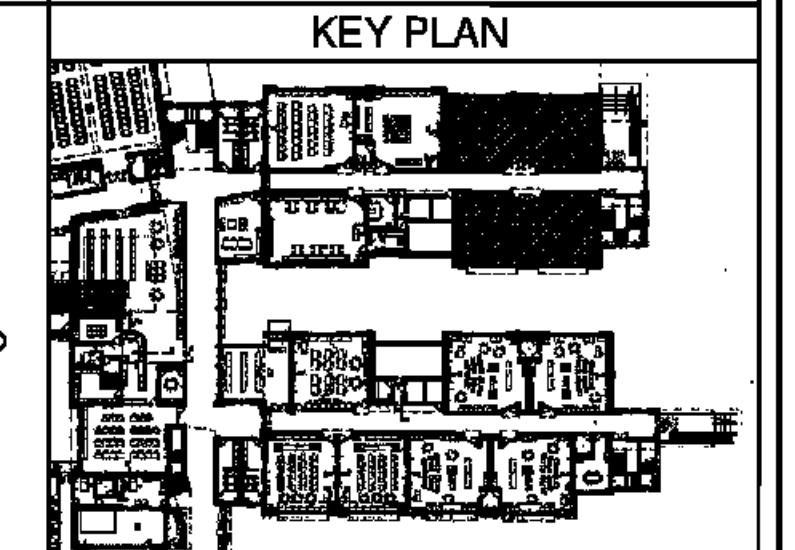


TYPICAL 2nd - 8th GRADE CLASSROOM ELEVATION - LOOKING TOWARDS FRONT OF CLASSROOM

RSD
LOUISIANA

LEGEND

- | | |
|--|---|
| 1 GYPSUM FLURDOWN (RE: FIN. SCH.) | 36 SHOWER CURTAIN ROD |
| 2 CMU (RE: FIN. SCH.) | 37 EDGE OF PLASTER |
| 3 ACOUSTICAL WALL PANELS (RE: FIN. SCH.) | 38 PARTITION MNTD DISP. (NIC) |
| 4 WINDOW SYSTEM (RE: WIN. SCH.) | 39 WALL MOUNTED SINK |
| 5 LIGHT FIXTURE (RE: ELEC) | 40 UNDERMOUNT SINK |
| 6 LAMINATE SURFACE COUNTER TOP | 41 UTILITY SINK |
| 7 ETCHED GLASS SIGNAGE (RE: SPECS) | 42 TACK STRIP |
| 8 BACKSPLASH TO MATCH COUNTER | 43 PRECAST CONCRETE (RE: STR DWGS) |
| 9 WOOD CABINETS W/ LAMINATE FINISH | 44 PIN-MOUNTED SIGNAGE |
| 10 PAINTED CABINETS/ SHELVES | 45 SAFETY SHOWER, RE: SPECS |
| 11 MIRROR | 46 ELECTRONIC WHITE BOARD |
| 12 BLACK EPOXY RESIN COUNTER TOP | 47 FLAG HOLDER |
| 13 LIGHT SHELF | 48 SURFACE RACEWAY |
| 14 VENTHOOD | 49 ROOM FLAGLE |
| 15 MARKER BOARD | 50 DECORATIVE HANDRAIL SYSTEM (RE: SPECS) |
| 16 SOAP DISPENSER (NIC) | 51 MOTORIZED WINDOW SHADE (RE: FIN SCH & FLR PLN) |
| 17 HAND DRYER | 52 STAGE CURTAINS |
| 18 WALL CLOCK | 53 MOTORIZED BLEACHERS W/ INTEGRAL HANDRAIL SYSTM |
| 19 WALL PADS (RE: FIN. SCH.) | 54 CEILING MNTD RETRACTABLE PROJECTION SCREEN |
| 20 SCORE BOARD | 55 DOOR (RE: DOOR SCH) |
| 21 FIN MOUNTED SIGNAGE | 56 NOT USED |
| 22 FIRE STATION | 57 BASKETBALL BACKSTOP |
| 23 TOWEL DISPENSER | 58 MECH DUCTWORK (RE:MECH) |
| 24 CLUBBIES | 59 LIGHT FIXTURE (RE: ELEC) |
| 25 EDGE OF WALL | 60 TRUSSES (RE: STRUCTURAL) |
| 26 MAP HOOKS | 61 SCOREBOARD (RE: SPECS) |
| 27 SHOWER SEAT | 62 ELECTRIC DIVIDER CURTAIN SECURED TO STRUCTURE |
| 28 WATER FOUNTAIN | 63 RECESSED WALL |
| 29 FLR BASE (RE: FIN SCH) | 64 LIGHTWGT CURTAIN (RE:FIN SCH & FR PLN) |
| 30 SOAP DISH (NIC) | 65 SUSPENDED PIPE GRID SYSTEM SECURED TO STRUC |
| 31 METAL STORAGE RACK | 66 POWER JUNCTION BOX SECURED TO PIPE GRID SYS. |
| | 67 MOTOR OPERATED FOLDING PARTITION WALL |
| | 68 PARTITION STACK STORAGE |
| | 69 CIRCULATION DESK |
| | 70 LIBRARY SHELVING SYSTEM |



BIDDING DOCUMENTS		05/04/10
NO. REVISION	DATE	
PARKVIEW SCHOOL 4817 MIRABEAU AVE. NEW ORLEANS, LA 70126		PROJECT
09009	JOB NO	
INTERIOR ELEVATIONS		TITLE
1/2" = 1'-0"		SCALE
MMM/AB / CW	DRAWN/CHK	

A-6.18
FULLY SPRINKLERED BUILDING

RWA
ROZAS - WARD ARCHITECTS
A PROFESSIONAL CORPORATION www.rozas-ward.com
1100 POYDRAS ST. SUITE 3550 NO LA 70183 504.524.4575

F
E
D
C
B
A

1 2 3 4 5 6

ONE AND ONE HALF INCHES = ONE FOOT
ONE HALF INCH = ONE FOOT
ONE QUARTER INCH = ONE FOOT
ONE EIGHT INCH = ONE FOOT