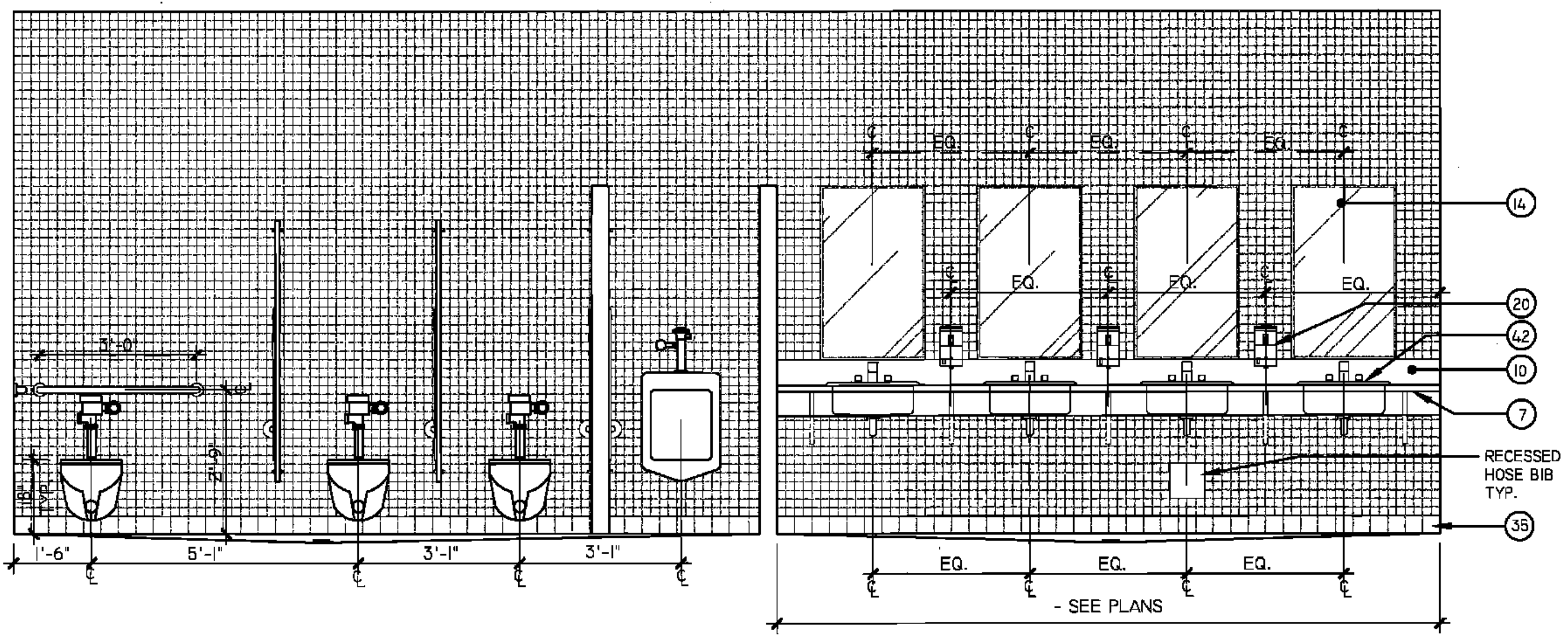
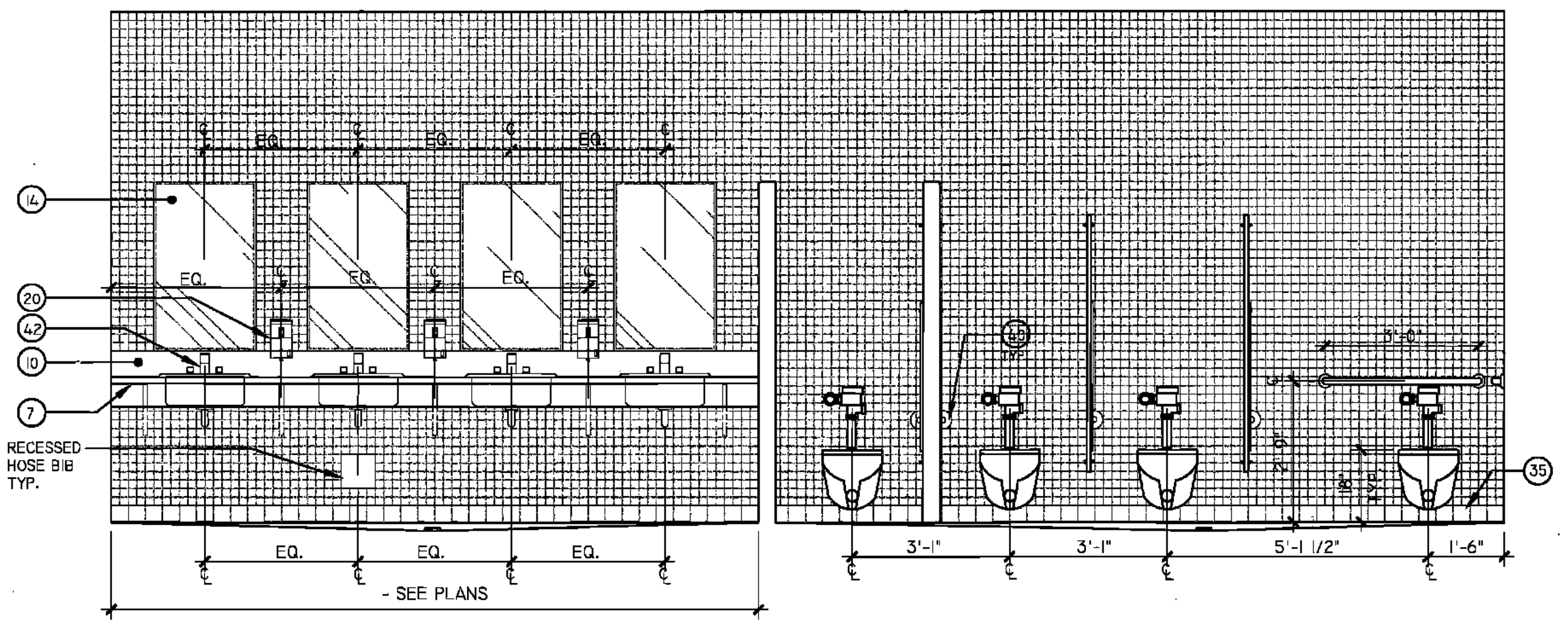


1
AB.13
PRE-K/ KINDERGARTEN BATHROOM ELEVATIONS
RM. #208, 220



2
AB.13
TYPICAL MENS RESTROOM ELEVATION
RM. #215

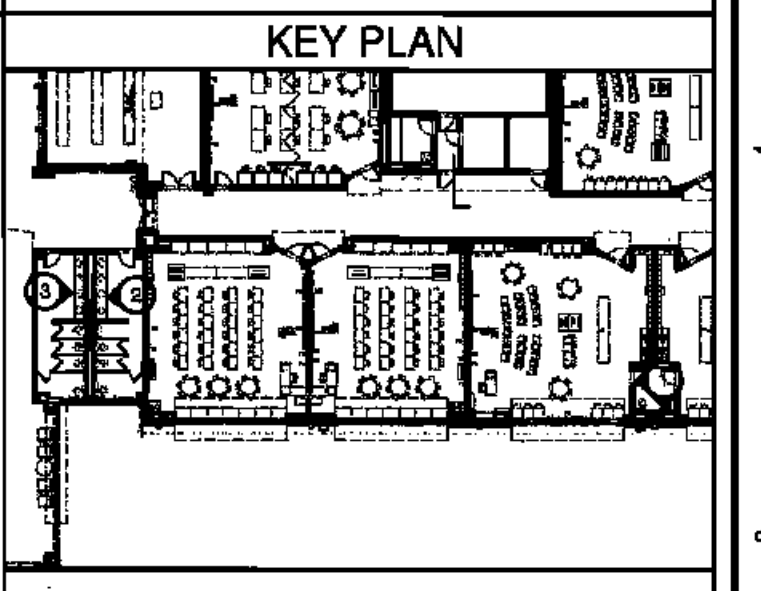


3
AB.13
TYPICAL GIRLS RESTROOM ELEVATION
RM. #216



LEGEND

1 GYPSUM FURDOWN (RE: FIN. SCH.)	20 SHOWER CURTAIN ROD (RE: FIN. SCH.)
2 CMU (RE: FIN. SCH.)	21 PARTITION MNTD DISP. (NIC)
3 ACOUST. CAL. WALL PANELS (RE: FIN. SCH.)	22 WALL MOUNTED SINK
4 WINDOW SYSTEM (RE: WIN. SCH.)	23 UNDERMOUNT SINK
5 LIGHT FIXTURE (RE: ELEC)	24 UTILITY SINK
6 LAMINATE SURFACE COUNTER TOP	25 TACK STRIP
7 ETCHED GLASS SIGNAGE (RE: SPECS)	26 PRECAST CONCRETE (RE: STR DWGS)
8 BACKSPLASH TO MATCH COUNTER	27 PIN-MOUNTED SIGNAGE
9 WOOD CABINETS W/ LAMINATE FINISH	28 SAFETY SHOWER, RE: SPECS
10 WOOD CABINETS W/ GLASS INSERT	29 ELECTRONIC WHITE BOARD
11 PAINTED CABINETS/ SHELVES	30 FLAG HOLDER
12 MIRROR	31 SURFACE RACEWAY
13 TACK BOARD	32 ROOM PLAQUE
14 BLACK EPOXY RESIN COUNTER TOP	33 DECORATIVE HANDRAIL SYSTEM (RE: SPECS)
15 VENTHOOD	34 MOTORIZED WINDOW SHADE (RE: FIN SCH & FLR PLN)
16 MARKER BOARD	35 INTEGRAL HANDRAIL SYSTEM
17 SOAP DISPENSER (NIC)	36 CEILING MNTD RETRACTABLE PROJECTION SCREEN
18 HAND DRYER	37 DOOR (RE: DOOR SCH)
19 WALL CLOCK	38 NOT USED
20 WALL PADS (RE: FIN. SCH.)	39 BASKETBALL BACKSTOP
21 SCORE BOARD	40 MECH DUCTWORK (RE:MECH)
22 PIN MOUNTED SIGNAGE	41 TRUSSES (RE: STRUCTURAL)
23 FIRE STATION	42 SCOREBOARD (RE: SPECS)
24 TOWEL DISPENSER	43 ELECTRIC DIVIDER CURTAIN SECURED TO STRUCTURE
25 CUBBIES	44 RECESSED WALL
26 EDGE OF WALL	45 LIGHTWIGHT CURTAIN (REFIN SCH & FR PLN)
27 MAP HOOKS	46 SUSPENDED PIPE GRID SYSTEM SECURED TO STRUC
28 SHOWER SEAT	47 POWER JUNCTION BOX SECURED TO PIPE GRID SYS.
29 WATER FOUNTAIN	48 MOTOR OPERATED FOLDING PARTITION WALL
30 FLR BASE (RE: FIN SCH)	49 PARTITION STACK STORAGE
31 SOAP DISH (NIC)	50 CIRCULATION DESK
32 METAL STORAGE RACK	51 LIBRARY SHELVING SYSTEM



BIDDING DOCUMENTS		05/04/10
NO. REVISION	DATE	
PARKVIEW SCHOOL 4617 MIRABEAU AVE. NEW ORLEANS, LA 70128		PROJECT
09009	JOB NO	

INTERIOR ELEVATIONS	TITLE
1/2" = 1'-0"	SCALE
MMM/AB / CW	DRAWN/CHK

A-6.13
FULLY SPRINKLERED BUILDING

RWA
ROZAS-WARD ARCHITECTS

A PROFESSIONAL CORPORATION www.rozas-ward.com
1100 POYDRAS ST. SUITE 3550 NO LA 70163 504 624 4376

ONE AND ONE HALF INCHES = ONE FOOT
THREEONE INCH = ONE FOOT
ONE HALF INCH = ONE FOOT
ONE QUARTER INCH = ONE FOOT
ONE EIGHT INCH = ONE FOOT