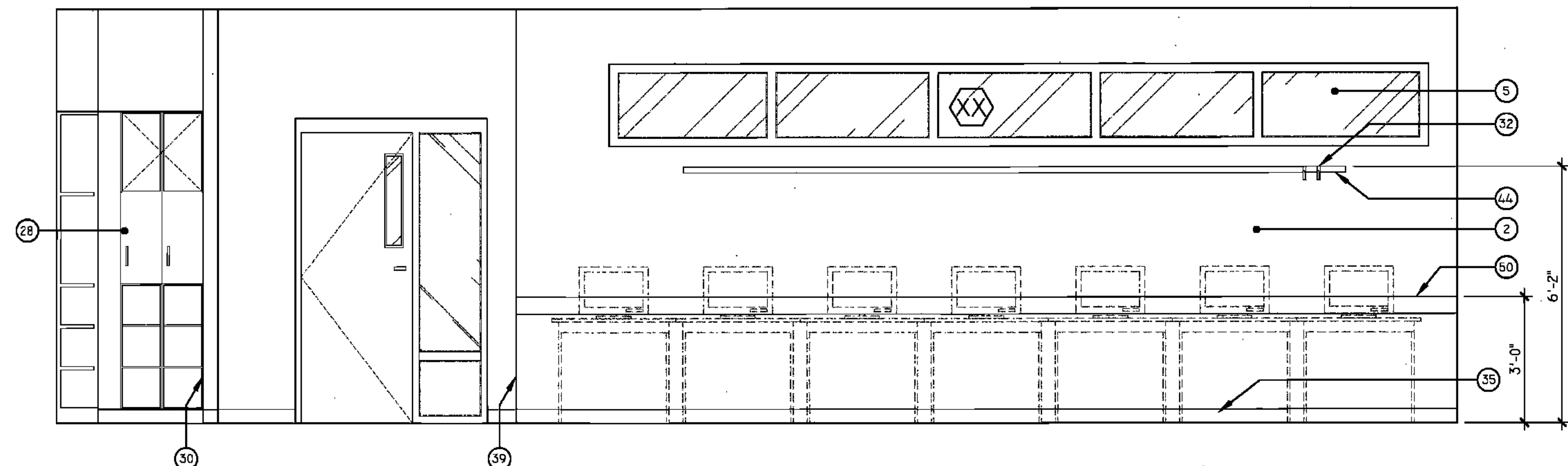
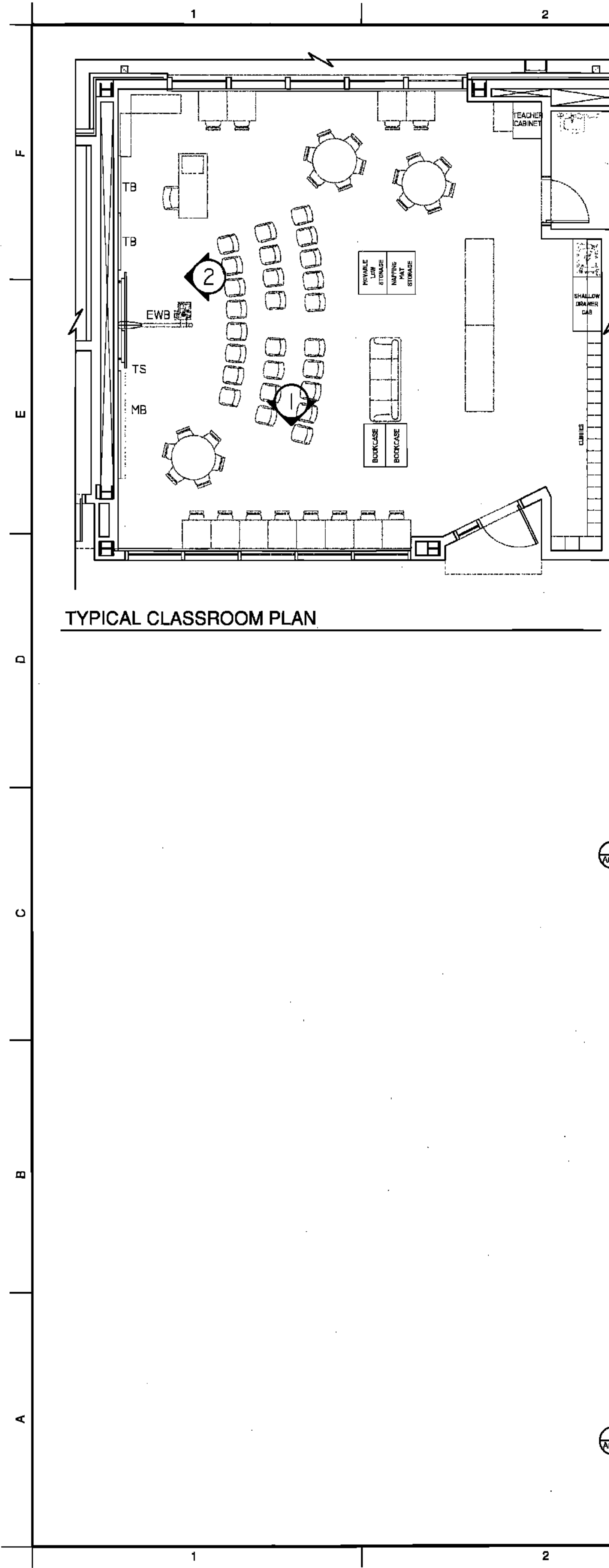
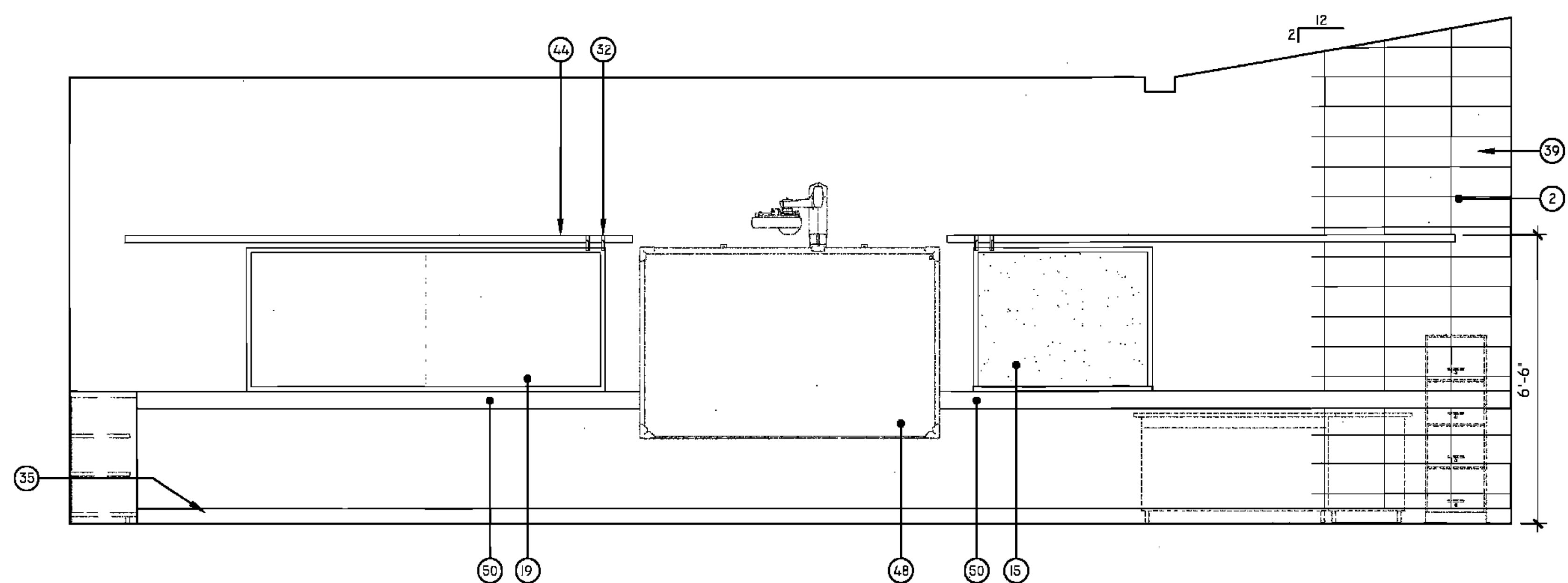


R:\Projects\2009 Projects\09009 - Parkview Elementary\04 Construction Documents\01 Drawings\A-6.0 INTERIOR ELEVATIONS.dwg, 5/2/2010 12:48:24 PM, DWG To PDF.pc3



1 A6.12 TYPICAL KINDERGARTEN CLASSROOM ELEVATION - LOOKING TOWARDS HALL



2 A6.12 TYPICAL KINDERGARTEN CLASSROOM ELEVATION - LOOKING TOWARDS FRONT OF CLASSROOM

LEGEND

| | |
|--|---|
| ① GYPSUM FLURDOWN (RE: FIN. SCH.) | ⑩ SHOWER CURTAIN ROD |
| ② CMU (RE: FIN. SCH.) | ⑪ EDGE OF PLASTER |
| ③ ACOUSTICAL WALL PANELS (RE: FIN. SCH.) | ⑫ PARTITION MNTD DISP. (NIC) |
| ④ WINDOW SYSTEM (RE: WIN. SCH.) | ⑬ WALL MOUNTED SINK |
| ⑤ LIGHT FIXTURE (RE: ELEC) | ⑭ UNDERMOUNT SINK |
| ⑥ LAMINATE SURFACE COUNTER TOP | ⑮ UTILITY SINK |
| ⑦ ETCHED GLASS SIGNAGE (RE: SPECS) | ⑯ TACK STRIP |
| ⑧ BACKSPLASH TO MATCH COUNTER | ⑰ PRECAST CONCRETE (RE: STR DWGS) |
| ⑨ WOOD CABINETS W/ LAMINATE FINISH | ⑱ PIN-MOUNTED SIGNAGE |
| ⑩ WOOD CABINETS W/ GLASS INSERT | ⑲ SAFETY SHOWER, RE: SPECS |
| ⑪ PAINTED CABINETS/ SHELVES | ⑳ ELECTRONIC WHITE BOARD |
| ⑫ MIRROR | ㉑ FLAG HOLDER |
| ⑬ TACK BOARD | ㉒ SURFACE RACEWAY |
| ⑭ BLACK EPOXY RESIN COUNTER TOP | ㉓ ROOM PLAQUE |
| ⑮ LIGHT SHELF | ㉔ DECORATIVE HANDRAIL SYSTEM (RE: SPECS) |
| ⑯ VENTHOOD | ㉕ MOTORIZED WINDOW SHADE |
| ⑰ MARKER BOARD | ㉖ STAGE CURTAINS |
| ⑱ SOAP DISPENSER (NIC) | ㉗ (RE: FIN SCH & FLR PLND) |
| ⑲ HAND DRYER | ㉘ MOTORIZED BLEACHERS W/ INTEGRAL HANDRAIL SYSTEM |
| ㉑ WALL CLOCK | ㉙ CEILING MNTD RETRACTABLE PROJECTION SCREEN |
| ㉒ WALL PADS (RE: FIN. SCH.) | ㉚ DOOR (RE: DOOR SCH) |
| ㉓ SCORE BOARD | ㉛ NOT USED |
| ㉔ PIN MOUNTED SIGNAGE | ㉜ BASKETBALL BACKSTOP |
| ㉕ FIRE STATION | ㉝ MECH DUCTWORK (RE:MECH) |
| ㉖ TOWEL DISPENSER | ㉞ TRUSSES (RE: STRUCTURAL) |
| ㉗ CURBIES | ㉟ SCOREBOARD (RE: SPECS) |
| ㉘ EDGE OF WALL | ㊱ ELECTRIC DIVIDER CURTAIN SECURED TO STRUCTURE. |
| ㉙ MAP HOOKS | ㊲ RECESSED WALL |
| ㊱ SHOWER SEAT | ㊳ LIGHTWEIGHT CURTAIN (REF: FIN SCH & FR PLND) |
| ㊲ WATER FOUNTAIN | ㊴ SUSPENDED PIPE GRID SYSTEM SECURED TO STRUCTURE |
| ㊳ FLR BASE (RE: FIN SCH) | ㊵ POWER JUNCTION BOX SECURED TO PIPE GRID SYS. |
| ㊴ SOAP DISH (NIC) | ㊶ MOTOR OPERATED FOLDING PARTITION WALL |
| ㊵ METAL STORAGE RACK | ㊷ PARTITION STACK STORAGE |
| | ㊸ CIRCULATION DESK |
| | ㊹ LIBRARY SHELVING SYSTEM |

KEY PLAN

| | | |
|--|-----------|----------|
| BIDDING DOCUMENTS | | 05/04/10 |
| NO. REVISION | DATE | |
| PARKVIEW SCHOOL 4617 MIRABEAU AVE. NEW ORLEANS, LA 70126 | | PROJECT |
| 09009 | JOB NO | |
| INTERIOR ELEVATIONS | | TITLE |
| 1/2" = 1'-0" | | SCALE |
| MMM/AB / CW | DRAWN/CHK | |

A-6.12

FULLY SPRINKLERED BUILDING

A PROFESSIONAL CORPORATION www.rozas-ward.com
1100 POYDRAS ST. SUITE 3650 NO LA 70163 504.524.4375

ONE AND ONE HALF INCHES = ONE FOOT
THREEONE INCH = ONE FOOT
ONE HALF INCH = ONE FOOT
ONE QUARTER INCH = ONE FOOT
ONE EIGHT INCH = ONE FOOT