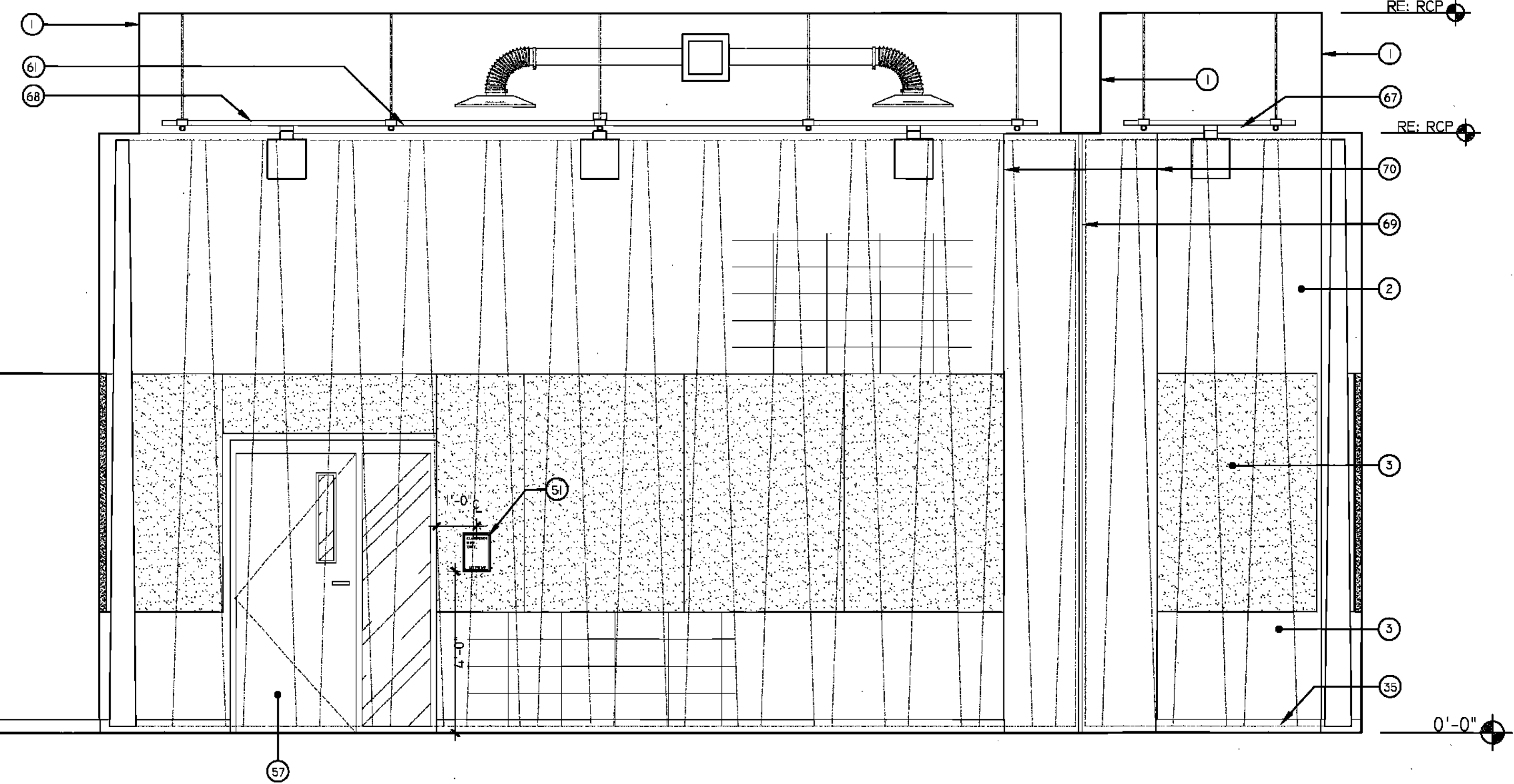


1 NORTH ELEVATION - MUSIC/PERFORMANCE ROOM
RM. #413



2 SOUTH ELEVATION - MUSIC/PERFORMANCE ROOM
RM. #413

RSD
LOUISIANA

LEGEND

1 GYPSUM FURDOWN (RE: FIN. SCH.)	68 SHOWER CURTAIN ROD
2 CMU (RE: FIN. SCH.)	69 EDGE OF PLASTER
3 ACOUSTICAL WALL PANELS (RE: FIN. SCH.)	70 PARTITION MNTD DISP. (NIC)
4 WINDOW SYSTEM (RE: WIN. SCH.)	71 WALL MOUNTED SINK
5 LIGHT FIXTURE (RE: ELEC)	72 UNDERMOUNT SINK
6 LAMINATE SURFACE COUNTER TOP	73 UTILITY SINK
7 ETCHED GLASS SIGNAGE (RE: SPECS)	74 TACK STRIP
8 BACKSPLASH TO MATCH COUNTER	75 PRECAST CONCRETE (RE: STR DWGS)
9 WOOD CABINETS W/ LAMINATE FINISH	76 PIN-MOUNTED SIGNAGE
10 PAINTED CABINETS/ SHELVES	77 SAFETY SHOWER, RE: SPECS
11 MIRROR	78 ELECTRONIC WHITE BOARD
12 BLACK EPOXY RESIN COUNTER TOP	79 FLAG HOLDER
13 LIGHT SHELF	80 SURFACE RACEWAY
14 VENT-HOOD	81 ROOM PLAQUE
15 MARKER BOARD	82 DECORATIVE HANDRAIL SYSTEM (RE: SPECS)
16 SOAP DISPENSER (NIC)	83 MOTORIZED WINDOW SHADE
17 HAND DRYER	84 STAGE CURTAINS
18 WALL CLOCK	85 INTEGRAL HANDRAIL SYSTEM
19 WALL PADS (RE: FIN. SCH.)	86 MOTORIZED BLEACHERS W/ PROJECTION SCREEN
20 SCORE BOARD	87 CEILING MNTD RETRACTABLE PROJECTION SCREEN
21 FIN MOUNTED SIGNAGE	88 DOOR (RE: DOOR SCH)
22 FIRE STATION	89 NOT USED
23 TOWEL DISPENSER	90 BASKETBALL BACKSTOP
24 CUBBIES	91 MECH DUCTWORK (RE:MECH)
25 EDGE OF WALL	92 LIGHT FIXTURE (RE: ELEC)
26 MAP HOOKS	93 TRUSSES (RE: STRUCTURAL)
27 SHOWER SEAT	94 SCOREBOARD (RE: SPECS)
28 WATER FOUNTAIN	95 ELECTRIC DIVIDER CURTAIN SECURED TO STRUCTURE
29 FLR BASE (RE: FIN SCH)	96 RECESSED WALL
30 SOAP DISH (NIC)	97 LIGHTWIGHT CURTAIN (REFIN SCH & FR PLN)
31 METAL STORAGE RACK	98 SUSPENDED PIPE GRID SYSTEM SECURED TO STRUCTURE
32 LIBRARY SHELVING SYSTEM	99 POWER JUNCTION BOX SECURED TO PIPE GRID SYS.
	100 MOTOR OPERATED FOLDING PARTITION WALL
	101 PARTITION STACK STORAGE
	102 CIRCULATION DESK
	103 LIBRARY SHELVING SYSTEM

KEY PLAN

BIDDING DOCUMENTS 05/04/10	
NO. REVISION	DATE
PARKVIEW SCHOOL PROJECT	
4617 MIRABEAU AVE. NEW ORLEANS, LA 70126	
08009	JOB NO
INTERIOR ELEVATIONS TITLE	
1/2" = 1'-0" SCALE	
MMM/AB / CW	DRAWN/CHK

A-6.8C

FULLY SPRINKLERED BUILDING

RWA
ROZAS WARD ARCHITECTS

A PROFESSIONAL CORPORATION www.rozas-ward.com

1100 POYDRAS ST. SUITE 3550 NO LA 70163 504 524 4375

F
E
D
C
B
A

1
2
3
4
5
6

ONE AND ONE HALF INCHES = ONE FOOT
 THREE ONE INCH = ONE FOOT
 ONE HALF INCH = ONE FOOT
 ONE QUARTER INCH = ONE FOOT
 ONE EIGHT INCH = ONE FOOT