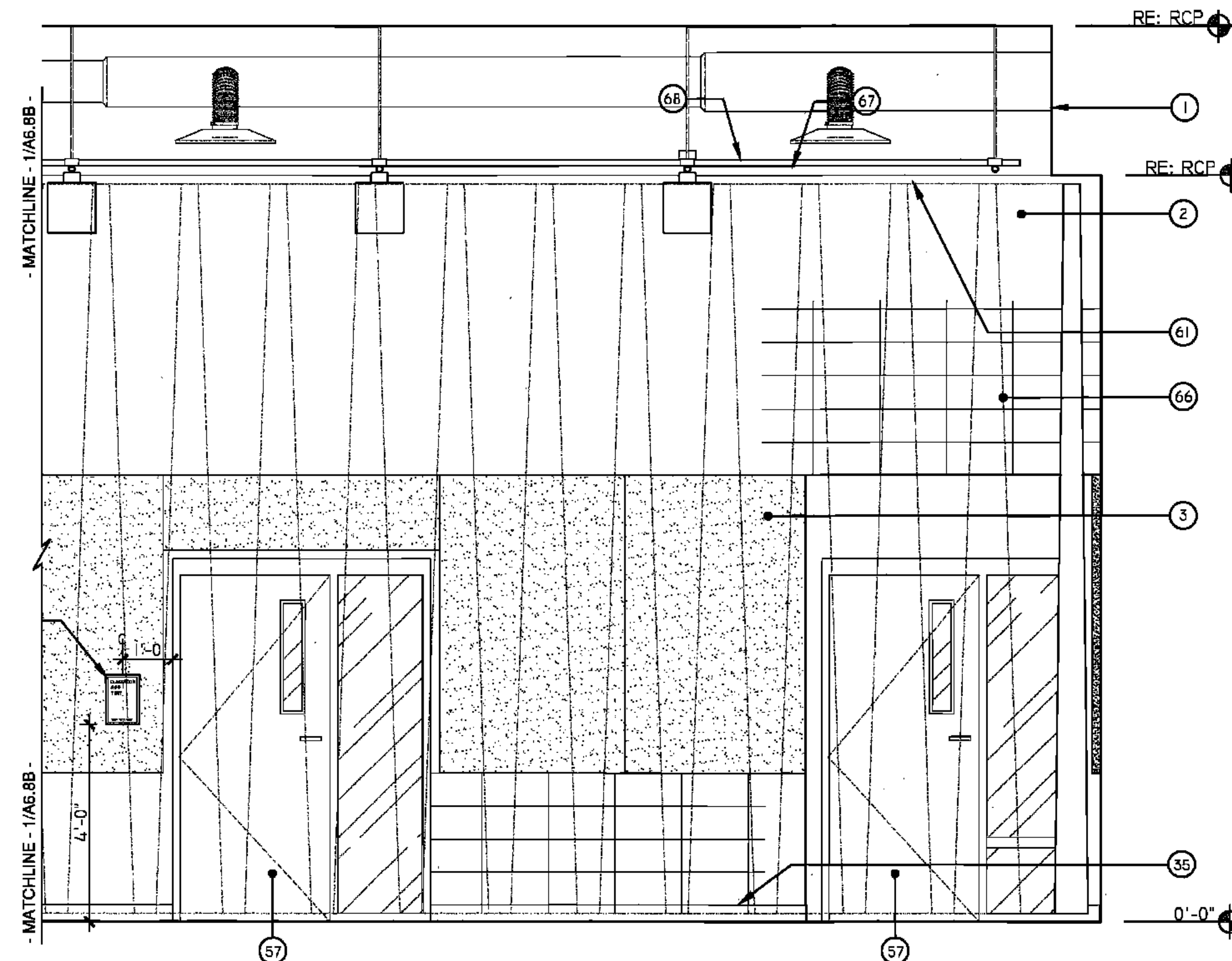


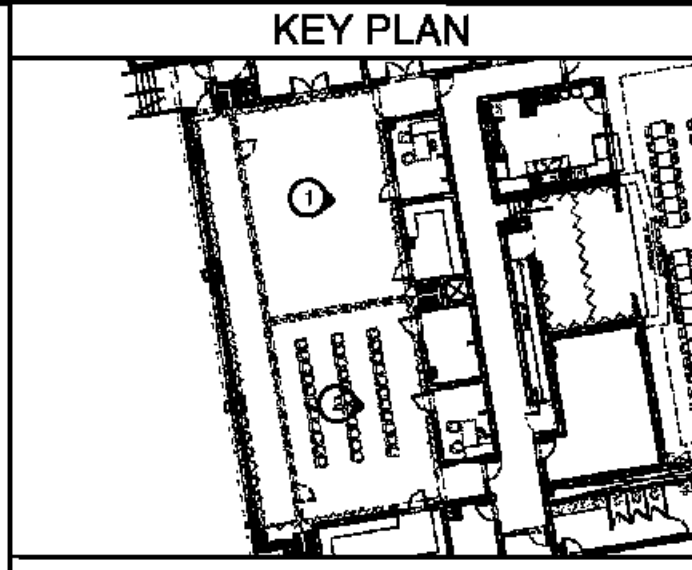
1
A6.8B
EAST ELEVATION - MUSIC/PERFORMANCE ROOM
RM. #413



2
A6.8B
EAST ELEVATION - MUSIC/PERFORMANCE ROOM
RM. #413

RSD
LOUISIANA

- LEGEND**
- ① GYPSUM FURDOWN (RE: FIN. SCH.)
 - ② CMU (RE: FIN. SCH.)
 - ③ ACOUSTICAL WALL PANELS (RE: FIN. SCH.)
 - ④ WINDOW SYSTEM (RE: WIN. SCH.)
 - ⑤ LIGHT FIXTURE (RE: ELEC)
 - ⑥ LAMINATE SURFACE COUNTER TOP
 - ⑦ ETCHED GLASS SIGNAGE (RE: SPECS)
 - ⑧ BACKSLASH TO MATCH COUNTER
 - ⑨ WOOD CABINETS W/ LAMINATE FINISH
 - ⑩ WOOD CABINETS W/ GLASS INSERT
 - ⑪ PAINTED CABINETS/ SHELVES
 - ⑫ MIRROR
 - ⑬ TACK BOARD
 - ⑭ BLACK EPOXY RESIN COUNTER TOP
 - ⑮ LIGHT SHELF
 - ⑯ VENTHOOD
 - ⑰ MARKER BOARD
 - ⑱ SOAP DISPENSER (NIC)
 - ⑲ HAND DRYER
 - ⑳ WALL CLOCK
 - ㉑ WALL PADS (RE: FIN. SCH.)
 - ㉒ SCORE BOARD
 - ㉓ PIN MOUNTED SIGNAGE
 - ㉔ FIRE STATION
 - ㉕ TOWEL DISPENSER
 - ㉖ CUBBIES
 - ㉗ EDGE OF WALL
 - ㉘ MAP HOOKS
 - ㉙ SHOWER SEAT
 - ㉚ WATER FOUNTAIN
 - ㉛ FLR BASE (RE: FIN SCH)
 - ㉜ SOAP DISH (NIC)
 - ㉝ METAL STORAGE RACK
 - ㉞ SHOWER CURTAIN ROD
 - ㉟ EDGE OF PLASTER
 - ⓫ PARTITION MNTD DISP. (NIC)
 - ⓬ WALL MOUNTED SINK
 - ⓭ UNDERMOUNT SINK
 - ⓮ UTILITY SINK
 - ⓯ TACK STRIP
 - ⓰ PRECAST CONCRETE (RE: STR DWGS)
 - ⓱ PIN MOUNTED SIGNAGE
 - ⓲ SAFETY SHOWER, RE: SPECS
 - ⓳ ELECTRONIC WHITE BOARD
 - ⓴ FLAG HOLDER
 - ⓵ SURFACE RACEWAY
 - ⓶ ROOM FLAG
 - ⓷ DECORATIVE HANDRAIL SYSTEM (RE: SPECS)
 - ⓸ MOTORIZED WINDOW SHADE
 - ⓹ STAGE CURTAINS
 - ⓺ MOTORIZED BLEACHERS W/ INTEGRAL HANDRAIL SYSTEM
 - ⓻ CEILING MNTD RETRACTABLE PROJECTION SCREEN
 - ⓼ DOOR (RE: DOOR SCH)
 - ⓽ NOT USED
 - ⓾ BASKETBALL BACKSTOP
 - ⓿ MECH DUCTWORK (RE:MECH)
 - ⓿ LIGHT FIXTURE (RE: ELEC)
 - ⓿ TRUSSES (RE: STRUCTURAL)
 - ⓿ SCOREBOARD (RE: SPECS)
 - ⓿ ELECTRIC DIVIDER CURTAIN SECURED TO STRUCTURE.
 - ⓿ RECESSED WALL
 - ⓿ LIGHTWGT CURTAIN (REFIN SCH & FR PLAN)
 - ⓿ SUSPENDED PIPE GRID SYSTEM SECURED TO STRUCT
 - ⓿ POWER JUNCTION BOX SECURED TO PIPE GRID SYS.
 - ⓿ MOTOR OPERATED FOLDING PARTITION WALL
 - ⓿ PARTITION STACK STORAGE
 - ⓿ CIRCULATION DESK
 - ⓿ LIBRARY SHELVING SYSTEM



BIDDING DOCUMENTS		05/04/10
NO.	REVISION	DATE
PARKVIEW SCHOOL 4617 MIRABEAU AVE. NEW ORLEANS, LA 70126		PROJECT
09009		JOB NO
INTERIOR ELEVATIONS		TITLE
1/2" = 1'-0"		SCALE
MMM/AB / CW		DRAWN/CHK

A-6.8B
FULLY SPRINKLERED BUILDING

RWA
ROZAS WARD ARCHITECTS
A PROFESSIONAL CORPORATION
www.rozas-ward.com
1100 POYDRAS ST. SUITE 3550 MO LA 70183 504 524 4375

ONE AND ONE HALF INCHES = ONE FOOT
ONE HALF INCH = ONE FOOT
ONE QUARTER INCH = ONE FOOT
ONE EIGHT INCH = ONE FOOT