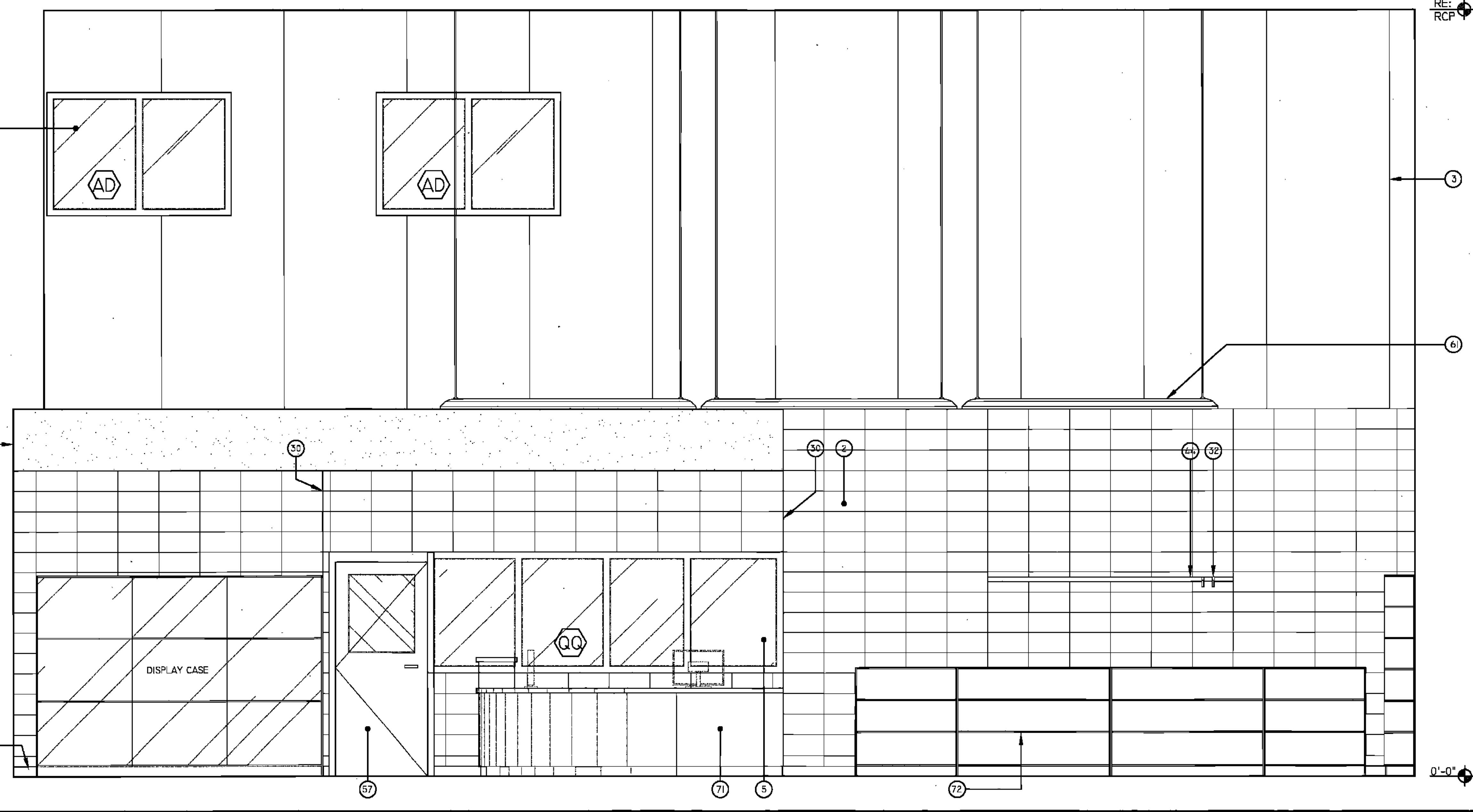


1 SOUTH ELEVATION - LIBRARY
RM. #124

F
E
D
C
B
A



RSD
LOUISIANA

LEGEND

1 GYPSUM FURDOWN (RE: FIN. SCH.)	39 SHOWER CURTAIN ROD
2 CMU (RE: FIN. SCH.)	40 EDGE OF PILASTER
3 ACoustICAL WALL PANELS (RE: FIN. SCH.)	41 PARTITION MNTD DISP. (NIC)
4 WINDOW SYSTEM (RE: WIN. SCH.)	42 WALL MOUNTED SINK
5 LIGHT FIXTURE (RE: ELEC)	43 UNDERMOUNT SINK
6 LAMINATE SURFACE COUNTER TOP	44 UTILITY SINK
7 ETCHED GLASS SIGNAGE (RE: SPECS)	45 TACK STRIP
8 BACKSPASH TO MATCH COUNTER	46 PRECAST CONCRETE (RE: STR DWGS)
9 WOOD CABINETS W/ LAMINATE FINISH	47 PIN-MOUNTED SIGNAGE
10 WOOD CABINETS W/ GLASS INSERT	48 SAFETY SHOWER, RE: SPECS
11 PAINTED CABINETS/ SHELVES	49 ELECTRONIC WHITE BOARD
12 MIRROR	50 FLAG HOLDER
13 TACK BOARD	51 SURFACE RACEWAY
14 BLACK EPOXY RESIN COUNTER TOP	52 ROOM PLAQUE
15 LIGHT SHELF	53 DECORATIVE HANDRAIL SYSTEM (RE: SPECS)
16 VENTHOOD	54 MOTORIZED WINDOW SHADE
17 MARKER BOARD	55 STAGE CURTAINS
18 SOAP DISPENSER (NIC)	56 MOTORIZED WINDOW SHADE (RE: FIN SCH & FLR FLN)
19 HAND DRYER	57 MOTORIZED BLEACHERS W/ INTEGRAL HANDRAIL SYSTEM
20 WALL CLOCK	58 CEILING MNTD RETRACTABLE PROJECTION SCREEN
21 WALL PADS	59 DOOR (RE: DOOR SCH.)
22 SCORE BOARD	60 NOT USED
23 PIN MOUNTED SIGNAGE	61 BASKETBALL BACKSTOP
24 FIRE STATION	62 MECH DUCTWORK (RE:MECH)
25 TOWEL DISPENSER	63 LIGHT FIXTURE (RE: ELEC)
26 CUBBIES	64 TRUSSES (RE: STRUCTURAL)
27 EDGE OF WALL	65 SCOREBOARD (RE: SPECS)
28 MAP HOOKS	66 ELECTRIC DIVIDER CURTAIN SECURED TO STRUCTURE.
29 SHOWER SEAT	67 RECESSED WALL
30 WATER FOUNTAIN	68 LIGHTWIGHT CURTAIN (REFIN SCH & FR FLN.)
31 FLR BASE (RE: FIN SCH)	69 SUSPENDED PIPE GRID SYSTEM SECURED TO STRUC.
32 SOAP DISH (NIC)	70 POWER JUNCTION BOX SECURED TO PIPE GRID SYS.
33 METAL STORAGE RACK	71 MOTOR OPERATED FOLDING PARTITION WALL
	72 PARTITION STACK STORAGE
	73 CIRCULATION DESK
	74 LIBRARY SHELVING SYSTEM

KEY PLAN

BIDDING DOCUMENTS	05/04/10
NO. REVISION	DATE
PARKVIEW SCHOOL 4617 MIRABEAU AVE. NEW ORLEANS, LA 70126	PROJECT
09009	JOB NO
INTERIOR ELEVATIONS	TITLE
1/2" = 1'-0"	SCALE
MMM/AB / CW	DRAWN/CHK
A-6.8	
FULLY SPRINKLERED BUILDING	
RWA	
ROZAS WARD ARCHITECTS	
A PROFESSIONAL CORPORATION www.rwa-ward.com	
1100 POYDRAS ST. SUITE 3560 NO LA 70183 504 824 4378	

0'-0"

ONE AND ONE HALF INCHES = ONE FOOT
THREEONE INCH = ONE FOOT
ONE HALF INCH = ONE FOOT
ONE QUARTER INCH = ONE FOOT
ONE EIGHT INCH = ONE FOOT