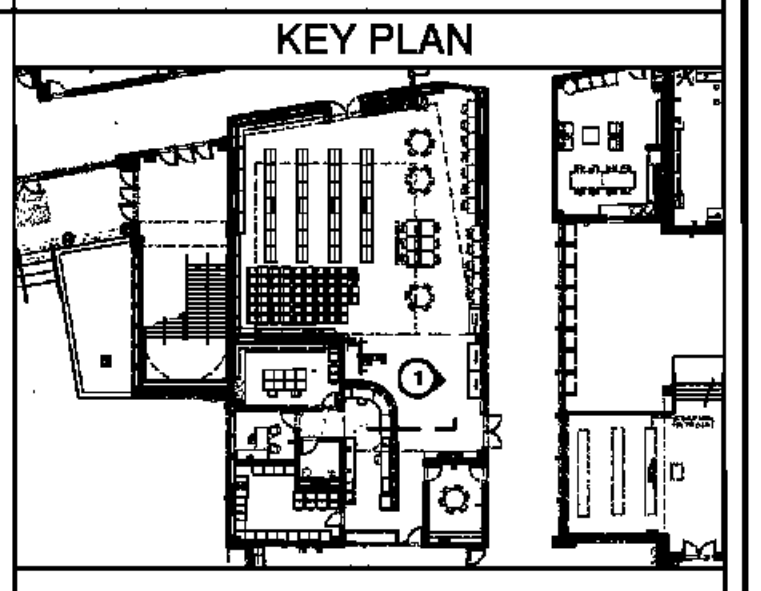


A-6.7 EAST ELEVATION - LIBRARY
RM. #124



- LEGEND**
- ① GYPSUM FURDOWN (RE: FIN. SCH.)
 - ② CMU (RE: FIN. SCH.)
 - ③ ACoustICAL WALL PANELS (RE: FIN. SCH.)
 - ④ WINDOW SYSTEM (RE: WIN. SCH.)
 - ⑤ LIGHT FIXTURE (RE: ELEC)
 - ⑥ LAMINATE SURFACE COUNTER TOP
 - ⑦ ETCHED GLASS SIGNAGE (RE: SPECS)
 - ⑧ BACKSPASH TO MATCH COUNTER
 - ⑨ WOOD CABINETS W/ LAMINATE FINISH
 - ⑩ WOOD CABINETS W/ GLASS INSERT
 - ⑪ PAINTED CABINETS/ SHELVES
 - ⑫ MIRROR
 - ⑬ TACK BOARD
 - ⑭ BLACK EPOXY RESIN COUNTER TOP
 - ⑮ LIGHT SHELF
 - ⑯ VENTHOOD
 - ⑰ MARKER BOARD
 - ⑱ SOAP DISPENSER (NIC)
 - ⑲ HAND DRYER
 - ⑳ WALL CLOCK
 - ㉑ WALL PADS (RE: FIN. SCH.)
 - ㉒ SCORE BOARD
 - ㉓ PIN MOUNTED SIGNAGE
 - ㉔ FIRE STATION
 - ㉕ TOWEL DISPENSER
 - ㉖ CLUBBIES
 - ㉗ EDGE OF WALL
 - ㉘ MAP HOOKS
 - ㉙ SHOWER SEAT
 - ㉚ WATER FOUNTAIN
 - ㉛ FLR BASE (RE: FIN SCH)
 - ㉜ SOAP DISH (NIC)
 - ㉝ METAL STORAGE RACK
 - ㉞ SHOWER CURTAIN ROD
 - ㉟ EDGE OF PILASTER
 - ㊱ PARTITION MNTD DISP. (NIC)
 - ㊲ WALL MOUNTED SINK
 - ㊳ UNDERMOUNT SINK
 - ㊴ UTILITY SINK
 - ㊵ TACK STRIP
 - ㊶ PRECAST CONCRETE (RE: STR DWGS)
 - ㊷ PIN-MOUNTED SIGNAGE
 - ㊸ SAFETY SHOWER, RE: SPECS
 - ㊹ ELECTRONIC WHITE BOARD
 - ㊺ FLAG HOLDER
 - ㊻ SURFACE RACEWAY
 - ㊼ ROOM PLAQUE
 - ㊽ DECORATIVE HANDRAIL SYSTEM (RE: SPECS)
 - ㊾ MOTORIZED WINDOW SHADE
 - ㊿ STAGE CURTAINS (RE: FIN SCH & FLR PLN)
 - 1 MOTORIZED BLEACHERS W/ INTEGRAL HANDRAIL SYSTEM
 - 2 CEILING MNTD RETRACTABLE PROJECTION SCREEN
 - 3 DOOR (RE: DOOR SCH)
 - 4 NOT USED
 - 5 BASKETBALL BACKSTOP
 - 6 MECH DUCTWORK (RE:MECH)
 - 7 LIGHT FIXTURE (RE: ELEC)
 - 8 TRUSSES (RE: STRUCTURAL)
 - 9 SCOREBOARD (RE: SPECS)
 - 10 ELECTRIC DIVIDER CURTAIN SECURED TO STRUCTURE.
 - 11 RECESSED WALL
 - 12 LIGHTWIGHT CURTAIN (RE:FIN SCH & FR PLN).
 - 13 SUSPENDED PIPE GRID SYSTEM SECURED TO STRUC.
 - 14 POWER JUNCTION BOX SECURED TO PIPE GRID SYS.
 - 15 MOTOR OPERATED FOLDING PARTITION WALL.
 - 16 PARTITION STACK STORAGE
 - 17 CIRCULATION DESK
 - 18 LIBRARY SHELVING SYSTEM



BIDDING DOCUMENTS		05/04/10
NO. REVISION	DATE	
PARKVIEW SCHOOL 4617 MIRABEAU AVE. NEW ORLEANS, LA 70126		PROJECT
09009	JOB NO	
INTERIOR ELEVATIONS		TITLE
1/2" = 1'-0"		SCALE
MMM/AB / CW	DRAWN/CHK	

A-6.7
FULLY SPRINKLERED BUILDING

RWA
ROZAS-WARD ARCHITECTS

A PROFESSIONAL CORPORATION www.rozas-ward.com
1100 POYDRAS ST. SUITE 3550 NO LA 70183 504 824 4375

ONE AND ONE HALF INCHES = ONE FOOT
THREE ONE INCH = ONE FOOT
ONE HALF INCH = ONE FOOT
ONE QUARTER INCH = ONE FOOT
ONE EIGHT INCH = ONE FOOT