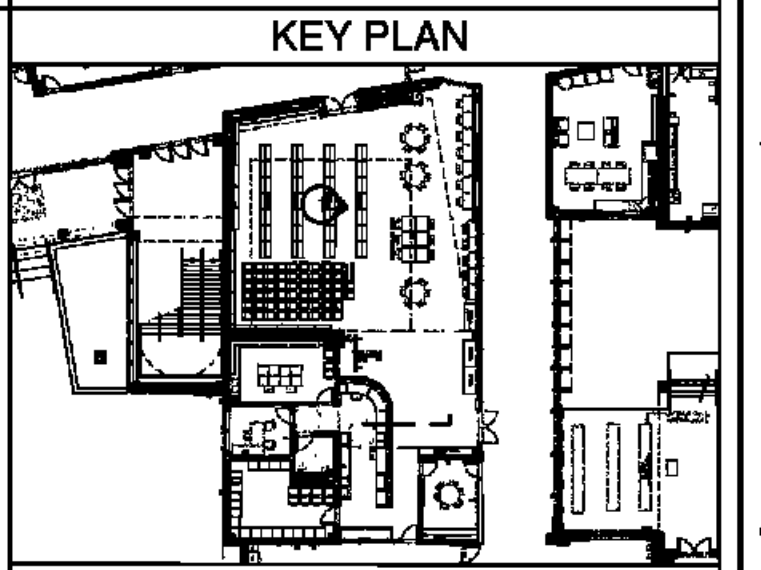


EAST ELEVATION - LIBRARY
RM. #124



- LEGEND**
- ① GYPSUM FURDOWN (RE: FIN. SCH.)
 - ② CMU (RE: FIN. SCH.)
 - ③ ACOUSTICAL WALL PANELS (RE: FIN. SCH.)
 - ④ WINDOW SYSTEM (RE: WIN. SCH.)
 - ⑤ LIGHT FIXTURE (RE: ELEC)
 - ⑥ LAMINATE SURFACE COUNTER TOP
 - ⑦ ETCHED GLASS SIGNAGE (RE: SPECS)
 - ⑧ BACKSPASH TO MATCH COUNTER
 - ⑨ WOOD CABINETS W/ LAMINATE FINISH
 - ⑩ WOOD CABINETS W/ GLASS INSERT
 - ⑪ PAINTED CABINETS/ SHELVES
 - ⑫ MIRROR
 - ⑬ TACK BOARD
 - ⑭ BLACK EPOXY RESIN COUNTER TOP
 - ⑮ VENTHOOD
 - ⑯ MARKER BOARD
 - ⑰ SOAP DISPENSER (NIC)
 - ⑱ HAND DRYER
 - ⑲ WALL CLOCK
 - ⑳ WALL PADS (RE: FIN. SCH.)
 - ㉑ SCORE BOARD
 - ㉒ PIN MOUNTED SIGNAGE
 - ㉓ FIRE STATION
 - ㉔ TOWEL DISPENSER
 - ㉕ CLUBBIES
 - ㉖ EDGE OF WALL
 - ㉗ MAP HOOKS
 - ㉘ SHOWER SEAT
 - ㉙ WATER FOUNTAIN
 - ㉚ FLR BASE (RE: FIN SCH)
 - ㉛ SOAP DISH (NIC)
 - ㉜ METAL STORAGE RACK
 - ㉝ SHOWER CURTAIN ROD
 - ㉞ EDGE OF PILASTER
 - ㉟ PARTITION MNTD DISP. (NIC)
 - ㊱ WALL MOUNTED SINK
 - ㊲ UNDERMOUNT SINK
 - ㊳ UTILITY SINK
 - ㊴ TACK STRIP
 - ㊵ PRECAST CONCRETE (RE: STR DWGS)
 - ㊶ PIN-MOUNTED SIGNAGE
 - ㊷ SAFETY SHOWER, RE: SPECS
 - ㊸ ELECTRONIC WHITE BOARD
 - ㊹ FLAG HOLDER
 - ㊺ SURFACE RACEWAY
 - ㊻ ROOM PLAQUE
 - ㊼ DECORATIVE HANDRAIL SYSTEM (RE: SPECS)
 - ㊽ MOTORIZED WINDOW SHADE
 - ㊾ STAGE CURTAINS
 - ㊿ MOTORIZED BLEACHERS W/ INTEGRAL HANDRAIL SYSTEM (RE: FIN SCH & FLR PLN)
 - 1 ㊿ CEILING MNTD RETRACTABLE PROJECTION SCREEN
 - 2 ㊿ DOOR (RE: DOOR SCH)
 - 3 ㊿ NOT USED
 - 4 ㊿ BASKETBALL BACKSTOP
 - 5 ㊿ MECH DUCTWORK (RE:MECH)
 - 6 ㊿ LIGHT FIXTURE (RE: ELEC)
 - 7 ㊿ TRUSSES (RE: STRUCTURAL)
 - 8 ㊿ SCOREBOARD (RE: SPECS)
 - 9 ㊿ ELECTRIC DIVIDER CURTAIN SECURED TO STRUCTURE.
 - 10 ㊿ RECESSED WALL
 - 11 ㊿ LIGHTWIGHT CURTAIN (REFIN SCH & FR PLN.)
 - 12 ㊿ SUSPENDED PIPE GRID SYSTEM SECURED TO STRUC.
 - 13 ㊿ POWER JUNCTION BOX SECURED TO PIPE GRID SYS.
 - 14 ㊿ MOTOR OPERATED FOLDING PARTITION WALL
 - 15 ㊿ PARTITION STACK STORAGE
 - 16 ㊿ CIRCULATION DESK
 - 17 ㊿ LIBRARY SHELVING SYSTEM



BIDDING DOCUMENTS		05/04/10
NO. REVISION	DATE	
PARKVIEW SCHOOL 4617 MIRABEAU AVE. NEW ORLEANS, LA 70126		PROJECT
09009	JOB NO	
INTERIOR ELEVATIONS		TITLE
1/2" = 1'-0"		SCALE
MM/MAB / CW	DRAWN/CHK	

A-6.6
FULLY SPRINKLERED BUILDING

RWA
ROZAS WARD ARCHITECTS

A PROFESSIONAL CORPORATION www.rozas-ward.com
1100 POYDRAS ST. SUITE 3550 NO LA 70163 504 524 4375

ONE AND ONE HALF INCHES = ONE FOOT
ONE HALF INCH = ONE FOOT
ONE QUARTER INCH = ONE FOOT
ONE EIGHT INCH = ONE FOOT