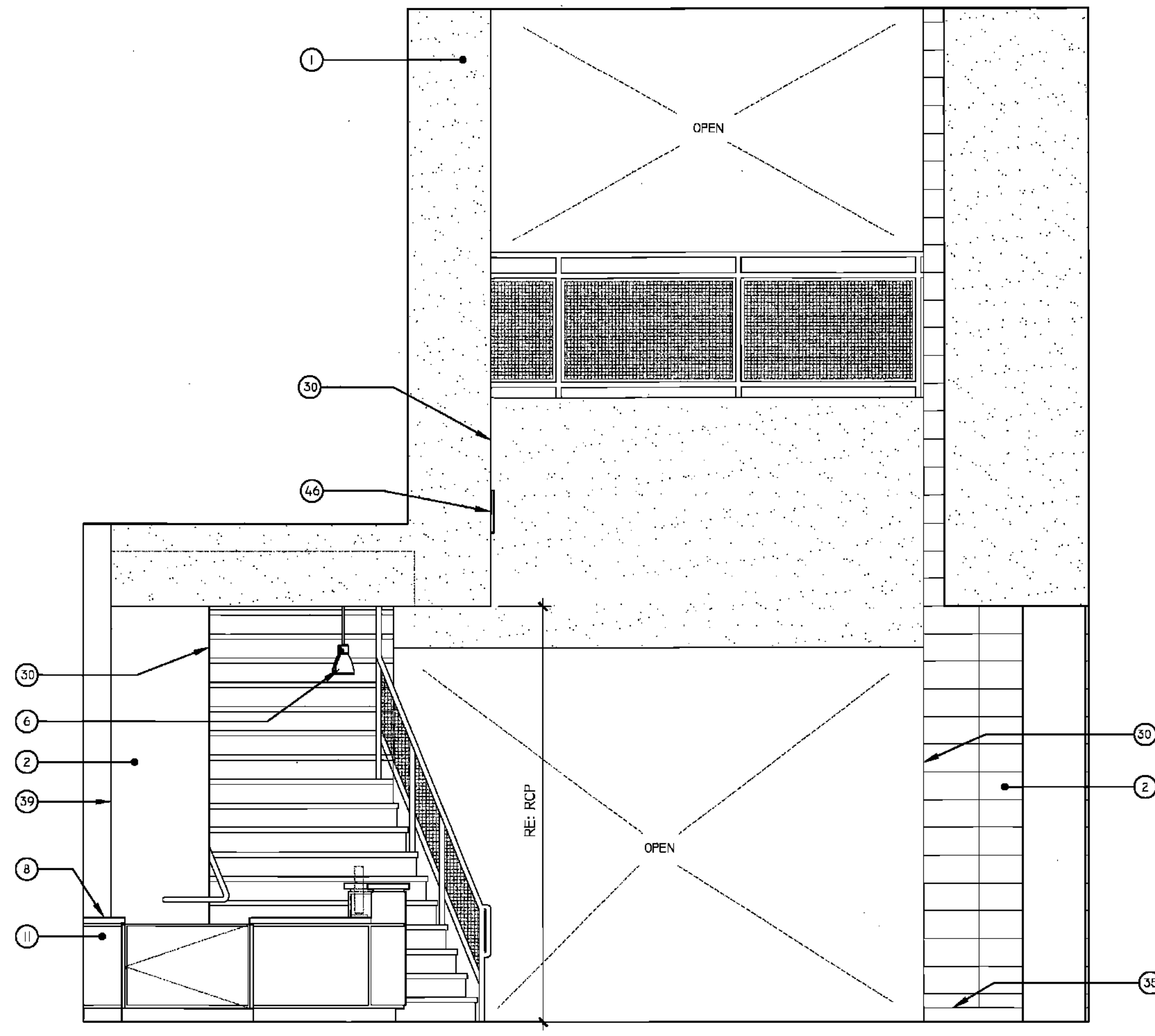
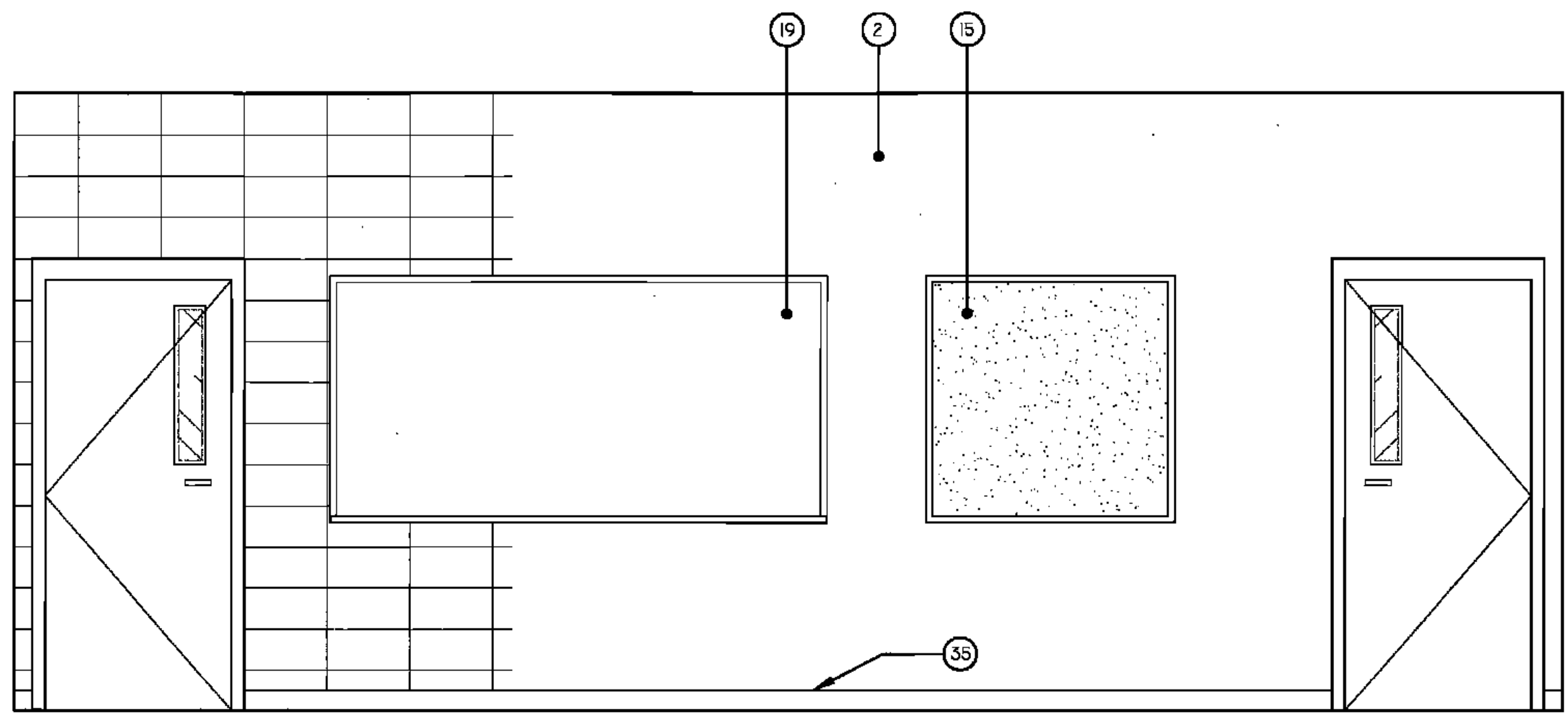


1
A6.1 WEST ELEVATION - CONFERENCE ROOM
RM. # 100



2
A6.1 NORTH ELEVATION - LOBBY
RM. # 100

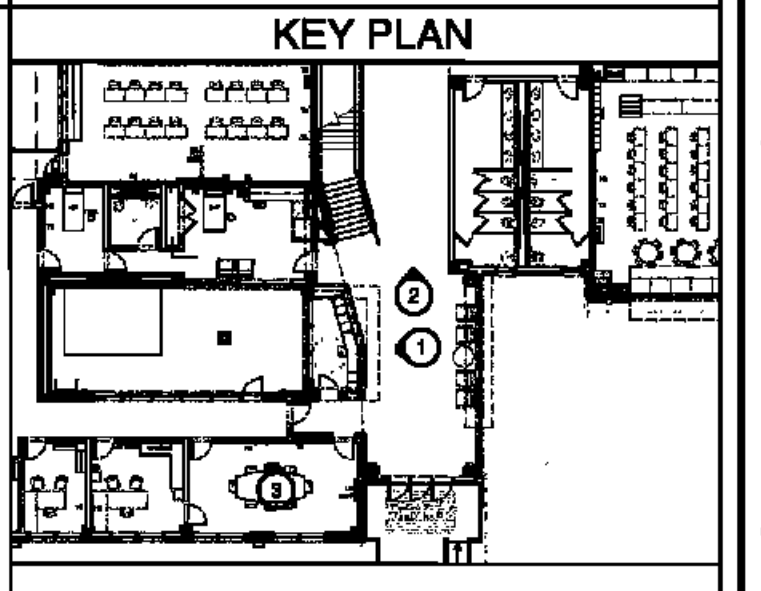


3
A6.1 NORTH ELEVATION - CONFERENCE ROOM
RM. # 101



LEGEND

1 GYPSUM FLURDOWN (RE: FIN. SCH.)	38 SHOWER CURTAIN ROD
2 CMU (RE: FIN. SCH.)	39 EDGE OF PLASTER
3 ACUSTICAL WALL PANELS (RE: FIN. SCH.)	40 PARTITION MNTD DISP. (NIC)
4 WINDOW SYSTEM (RE: WIN. SCH.)	41 WALL MOUNTED SINK
5 LIGHT FIXTURE (RE: ELEC)	42 UNDERMOUNT SINK
6 LAMINATE SURFACE COUNTER TOP	43 UTILITY SINK
7 ETCHED GLASS SIGNAGE (RE: SPECS)	44 TACK STRIP
8 BACKSLASH TO MATCH COUNTER	45 PRECAST CONCRETE (RE: STR DWGS)
9 WOOD CABINETS W/ LAMINATE FINISH	46 PIN-MOUNTED SIGNAGE
10 WOOD CABINETS W/ GLASS INSERT	47 SAFETY SHOWER, RE: SPECS
11 PAINTED CABINETS/ SHELVES	48 ELECTRONIC WHITE BOARD
12 MIRROR	49 FLAG HOLDER
13 TACK BOARD	50 SURFACE RACEWAY
14 BLACK EPOXY RESIN COUNTER TOP	51 ROOM PLADUE
15 LIGHT SHELF	52 DECORATIVE HANDRAIL SYSTEM (RE: SPECS)
16 VENTHOOD	53 MOTORIZED WINDOW SHADE
17 MARKER BOARD	54 STAGE CURTAINS
18 SOAP DISPENSER (NIC)	55 MOTORIZED BLEACHERS W/ INTEGRAL HANDRAIL SYSTM
19 HAND DRYER	56 CEILING MNTD RETRACTABLE PROJECTION SCREEN
20 WALL CLOCK	57 DOOR (RE: DOOR SCH)
21 WALL PADS (RE: FIN. SCH.)	58 NOT USED
22 SCORE BOARD	59 BASKETBALL BACKSTOP
23 PIN MOUNTED SIGNAGE	60 MECH DUCTWORK (RE:MECH)
24 FIRE STATION	61 LIGHT FIXTURE (RE: ELEC)
25 TOWEL DISPENSER	62 TRUSSES (RE: STRUCTURAL)
26 CLUBBIES	63 SCOREBOARD (RE: SPECS)
27 EDGE OF WALL	64 ELECTRIC DIVIDER CURTAIN SECURED TO STRUCTURE.
28 MAP HOOKS	65 RECESSED WALL
29 SHOWER SEAT	66 LIGHTWIGHT CURTAIN (REFIN SCH & FR PLN.)
30 WATER FOUNTAIN	67 SUSPENDED PIPE GRID SYSTEM SECURED TO STRUC.
31 FLR BASE (RE: FIN SCH)	68 POWER JUNCTION BOX SECURED TO PIPE GRID SYS.
32 SOAP DISH (NIC)	69 MOTOR OPERATED FOLDING PARTITION WALL
33 METAL STORAGE RACK	70 PARTITION STACK STORAGE
	71 CIRCULATION DESK
	72 LIBRARY SHELVING SYSTEM



BIDDING DOCUMENTS		05/04/10
NO. REVISION	DATE	
PARKVIEW SCHOOL 4617 MIRABEAU AVE. NEW ORLEANS, LA 70126		PROJECT
09009	JOB NO	
INTERIOR ELEVATIONS		TITLE
1/2" = 1'-0"		SCALE
MM/AB / CW	DRAWN/CHK	

A-6.1
FULLY SPRINKLERED BUILDING

RWA
ROZAS · WARD ARCHITECTS

A PROFESSIONAL CORPORATION www.rozas-ward.com
1100 POYDRAS ST. SUITE 3580 NO LA 70163 504 524 4376

ONE AND ONE HALF INCHES = ONE FOOT
ONE INCH = ONE FOOT
ONE QUARTER INCH = ONE FOOT
ONE EIGHT INCH = ONE FOOT