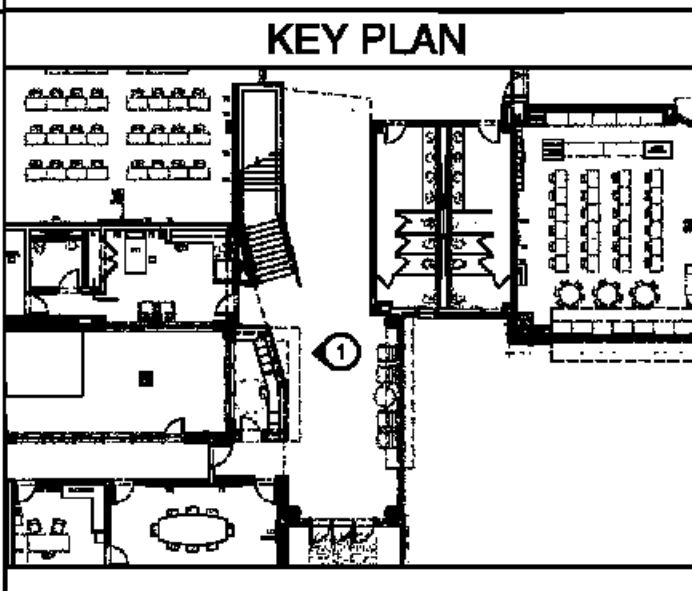


1  
A6.0B  
WEST ELEVATION - LOBBY  
RM. #100



**LEGEND**

1 GYPSUM FURDOWN (RE: FIN. SCH.)	33 SHOWER CURTAIN ROD
2 CMU (RE: FIN. SCH.)	34 EDGE OF PLASTER
3 ACOUSTICAL WALL PANELS (RE: FIN. SCH.)	35 PARTITION MNTD DISP. (NIC)
4 WINDOW SYSTEM (RE: WIN. SCH.)	36 WALL MOUNTED SINK
5 LIGHT FIXTURE (RE: ELEC)	37 UNDERMOUNT SINK
6 LAMINATE SURFACE COUNTER TOP	38 UTILITY SINK
7 ETCHED GLASS SIGNAGE (RE: SPECS)	39 TACK STRIP
8 BACKSPLASH TO MATCH COUNTER	40 PRECAST CONCRETE (RE: STR DWGS)
9 WOOD CABINETS W/ LAMINATE FINISH	41 PIN-MOUNTED SIGNAGE
10 WOOD CABINETS W/ GLASS INSERT	42 SAFETY SHOWER, RE: SPECS
11 PAINTED CABINETS/ SHELVES	43 ELECTRONIC WHITE BOARD
12 TACK BOARD	44 FLAG HOLDER
13 BLACK EPOXY RESIN COUNTER TOP	45 SURFACE RACEWAY
14 VENTHOOD	46 ROOM PLAQUE
15 MARKER BOARD	47 DECORATIVE HANDRAIL SYSTEM (RE: SPECS)
16 SOAP DISPENSER (NIC)	48 MOTORIZED WINDOW SHADE
17 HAND DRYER	49 STAGE CURTAINS (RE: FIN SCH & FLR PLN)
18 WALL CLOCK	50 MOTORIZED BLEACHERS W/ INTEGRAL HANDRAIL SYSTEM
19 WALL PADS (RE: FIN. SCH.)	51 CEILING MNTD RETRACTABLE PROJECTION SCREEN
20 SCORE BOARD	52 DOOR (RE: DOOR SCH)
21 PIN MOUNTED SIGNAGE	53 NOT USED
22 FIRE STATION	54 BASKETBALL BACKSTOP
23 TOWEL DISPENSER	55 MECH DUCTWORK (RE:MECH)
24 CLUBBIES	56 LIGHT FIXTURE (RE: ELEC)
25 EDGE OF WALL	57 TRUSSES (RE: STRUCTURAL)
26 MAP HOOKS	58 SCOREBOARD (RE: SPECS)
27 SHOWER SEAT	59 ELECTRIC DIVIDER CURTAIN SECURED TO STRUCTURE.
28 WATER FOUNTAIN	60 RECESSED WALL
29 FLR BASE (RE: FIN SCH)	61 RECESSED WALL
30 SOAP DISH (NIC)	62 LIGHTWIGHT CURTAIN (REFIN SCH & FR PLN.)
31 METAL STORAGE RACK	63 SUSPENDED PIPE GRID SYSTEM SECURED TO STRUC.
	64 POWER JUNCTION BOX SECURED TO PIPE GRID SYS.
	65 MOTOR OPERATED FOLDING PARTITION WALL
	66 PARTITION STACK STORAGE
	67 CIRCULATION DESK
	68 LIBRARY SHELVING SYSTEM



BIDDING DOCUMENTS		05/04/10
NO. REVISION	DATE	
PARKVIEW SCHOOL 4617 MIRABEAU AVE. NEW ORLEANS, LA 70126		PROJECT
09009	JOB NO	
INTERIOR ELEVATIONS		TITLE
1/2" = 1'-0"		SCALE
MMM/AB / CW	DRAWN/CHK	

**A-6.0B**  
FULLY SPRINKLERED BUILDING

**RWA**  
ROZAS WARD ARCHITECTS

A PROFESSIONAL CORPORATION www.rozas-ward.com  
1100 POYDRAS ST. SUITE 3550 NO LA 70163 504 584 4375

ONE AND ONE HALF INCHES = ONE FOOT  
THREE INCH = ONE FOOT  
ONE HALF INCH = ONE FOOT  
ONE QUARTER INCH = ONE FOOT  
ONE EIGHT INCH = ONE FOOT