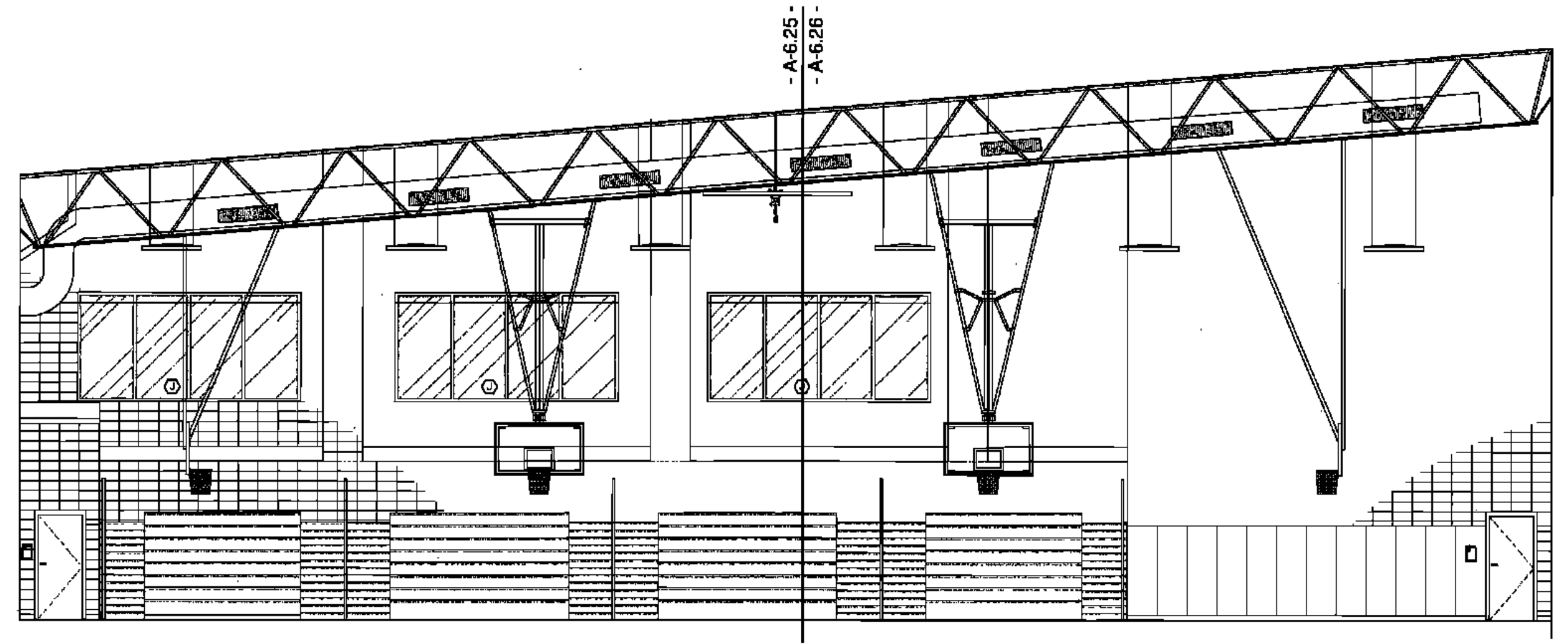
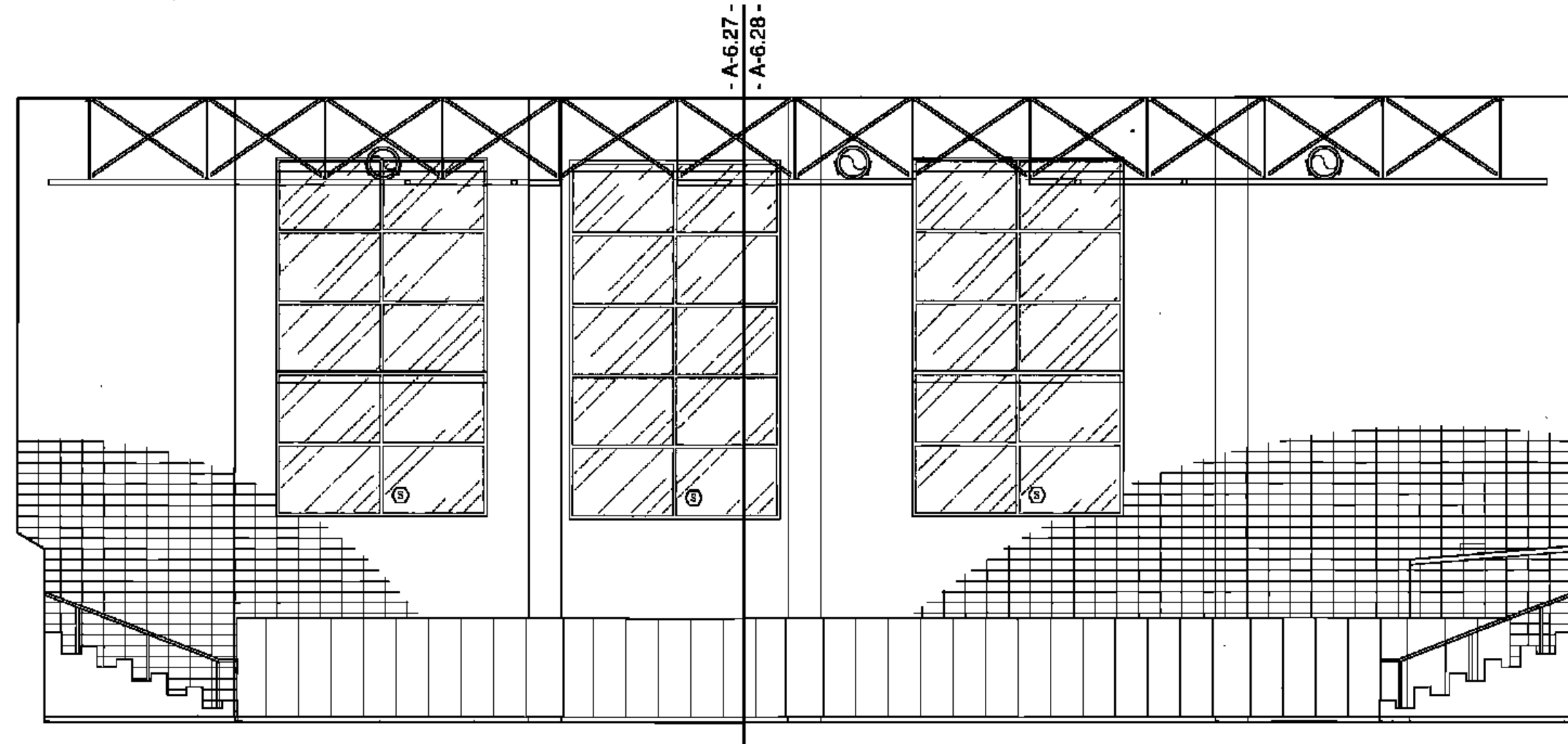


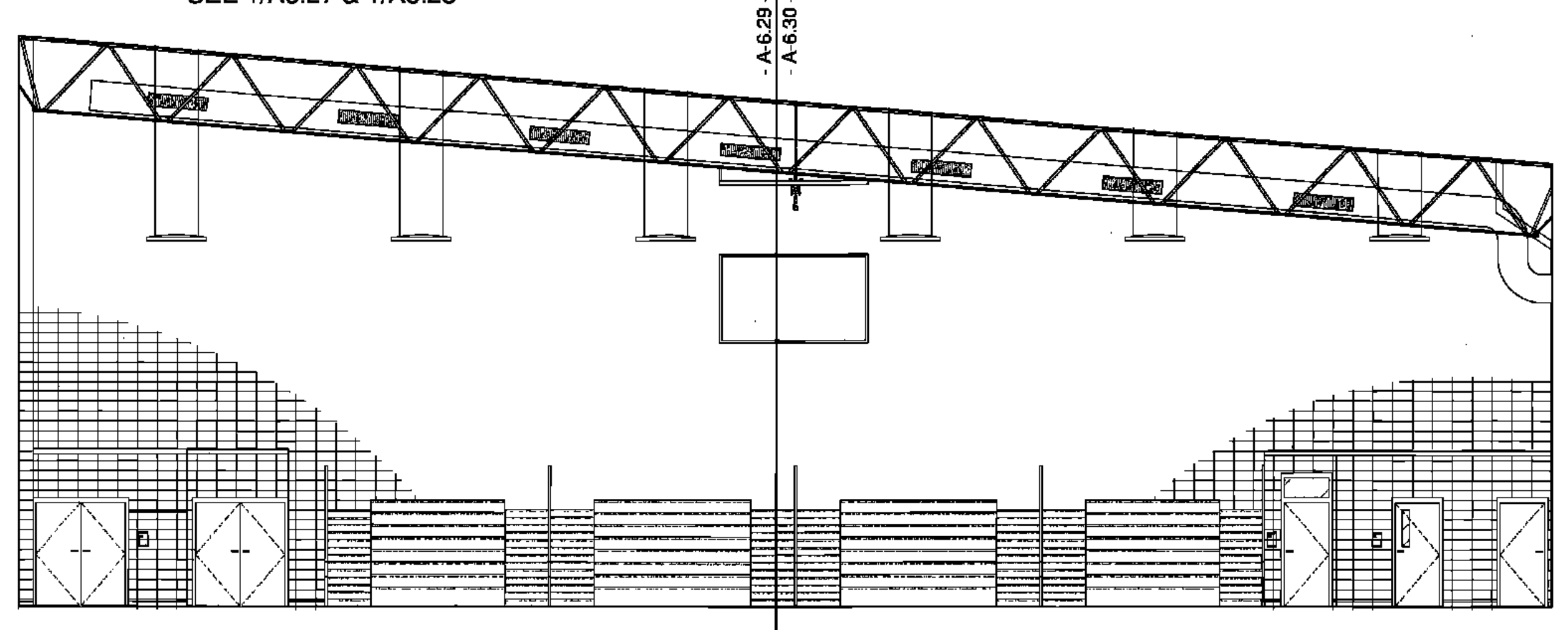
1  
A6.0A  
**OVERALL NORTH ELEVATION - CLASSROOM WING CORRIDOR, TYP.**  
- SEE 1/A6.22 & 1/A6.23



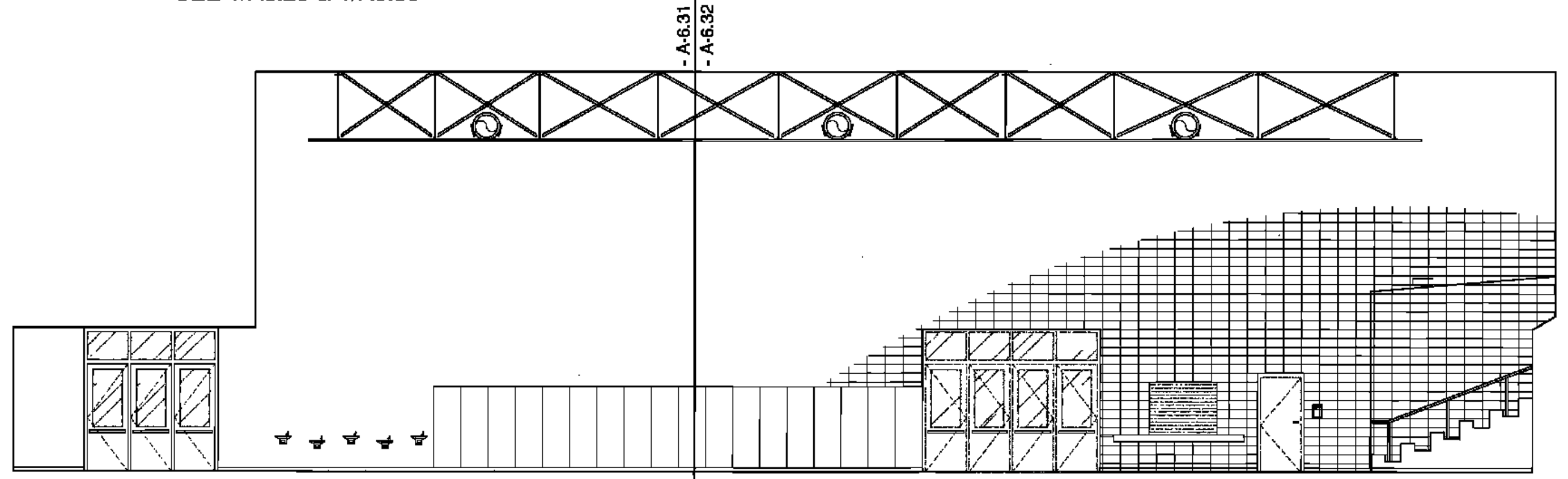
2  
A6.0A  
**OVERALL WEST ELEVATION - GYMNASIUM**  
- SEE 1/A6.25 & 1/A6.26



3  
A6.0A  
**OVERALL NORTH ELEVATION - GYMNASIUM**  
- SEE 1/A6.27 & 1/A6.28



4  
A6.0A  
**OVERALL EAST ELEVATION - GYMNASIUM**  
- SEE 1/A6.29 & 1/A6.30



5  
A6.0A  
**OVERALL SOUTH ELEVATION - GYMNASIUM**  
- SEE 1/A6.31 & 1/A6.32



- LEGEND**
- 1 GYPSUM FURDOWN (RE: FIN. SCH.)
  - 2 CMU (RE: FIN. SCH.)
  - 3 ACUSTICAL WALL PANELS (RE: FIN. SCH.)
  - 4 WINDOW SYSTEM (RE: WIN. SCH.)
  - 5 LIGHT FIXTURE (RE: ELEC)
  - 6 LAMINATE SURFACE COUNTER TOP
  - 7 ETCHED GLASS SIGNAGE (RE: SPECS)
  - 8 BACKSLASH TO MATCH COUNTER
  - 9 WOOD CABINETS W/ LAMINATE FINISH
  - 10 WOOD CABINETS W/ GLASS INSERT
  - 11 PAINTED CABINETS/ SHELVES
  - 12 MIRROR
  - 13 TACK BOARD
  - 14 BLACK EPOXY RESIN COUNTER TOP
  - 15 LIGHT SHELF
  - 16 VENTHOOD
  - 17 MARKER BOARD
  - 18 SOAP DISPENSER (NIC)
  - 19 HAND DRYER
  - 20 WALL CLOCK
  - 21 WALL PADS (RE: FIN. SCH.)
  - 22 SCORE BOARD
  - 23 PIN MOUNTED SIGNAGE
  - 24 FIRE STATION
  - 25 TOWEL DISPENSER
  - 26 CLUBBIES
  - 27 EDGE OF WALL
  - 28 MAP HOOKS
  - 29 SHOWER SEAT
  - 30 WATER FOUNTAIN
  - 31 FLR BASE (RE: FIN SCH)
  - 32 SOAP DISH (NIC)
  - 33 METAL STORAGE RACK
  - 34 SHOWER CURTAIN ROD
  - 35 EDGE OF PILASTER
  - 36 PARTITION MNTD DISP. (NIC)
  - 37 WALL MOUNTED SINK
  - 38 UNDERMOUNT SINK
  - 39 UTILITY SINK
  - 40 TACK STRIP
  - 41 PRECAST CONCRETE (RE: STR DWGS)
  - 42 PIN-MOUNTED SIGNAGE
  - 43 SAFETY SHOWER, RE: SPECS
  - 44 ELECTRONIC WHITE BOARD
  - 45 FLAG HOLDER
  - 46 SURFACE RACEWAY
  - 47 ROOM PLAQUE
  - 48 DECORATIVE HANDRAIL SYSTEM (RE: SPECS)
  - 49 MOTORIZED WINDOW SHADE
  - 50 STAGE CURTAINS
  - 51 MOTORIZED BLEACHERS W/ INTEGRAL HANDRAIL SYSTEM
  - 52 CEILING MNTD RETRACTABLE PROJECTION SCREEN
  - 53 DOOR (RE: DOOR SCH)
  - 54 NOT USED
  - 55 BASKETBALL BACKSTOP
  - 56 MECH DUCTWORK (RE:MECH)
  - 57 LIGHT FIXTURE (RE: ELEC)
  - 58 TRUSSES (RE: STRUCTURAL)
  - 59 SCOREBOARD (RE: SPECS)
  - 60 ELECTRIC DIVIDER CURTAIN SECURED TO STRUCTURE.
  - 61 RECESSED WALL
  - 62 LIGHTWGT CURTAIN (REFIN SCH & FR PLND.
  - 63 SUSPENDED PIPE GRID SYSTEM SECURED TO STRUC.
  - 64 POWER JUNCTION BOX SECURED TO PIPE GRID SYS.
  - 65 MOTOR OPERATED FOLDING PARTITION WALL
  - 66 PARTITION STACK STORAGE
  - 67 CIRCULATION DESK
  - 68 LIBRARY SHELVING SYSTEM

BIDDING DOCUMENTS		05/04/10
NO.	REVISION	DATE
PARKVIEW SCHOOL 4617 MIRABEAU AVE. NEW ORLEANS, LA 70126		PROJECT
09009		JOB NO
OVERALL INTERIOR ELEVATIONS		TITLE
1/8" = 1'0"		SCALE
MMM/AB / CW		DRAWN/CHK

**A-6.0A**  
FULLY SPRINKLERED BUILDING

**RWA**  
ROZAS WARD ARCHITECTS

A PROFESSIONAL CORPORATION [www.rozasward.com](http://www.rozasward.com)  
1100 POYDRAS ST. SUITE 3550 NO LA 70163 504 524 4375

ONE AND ONE HALF INCHES = ONE FOOT  
ONE QUARTER INCH = ONE FOOT  
ONE HALF INCH = ONE FOOT  
ONE EIGHT INCH = ONE FOOT  
THIRTEEN INCH = ONE FOOT