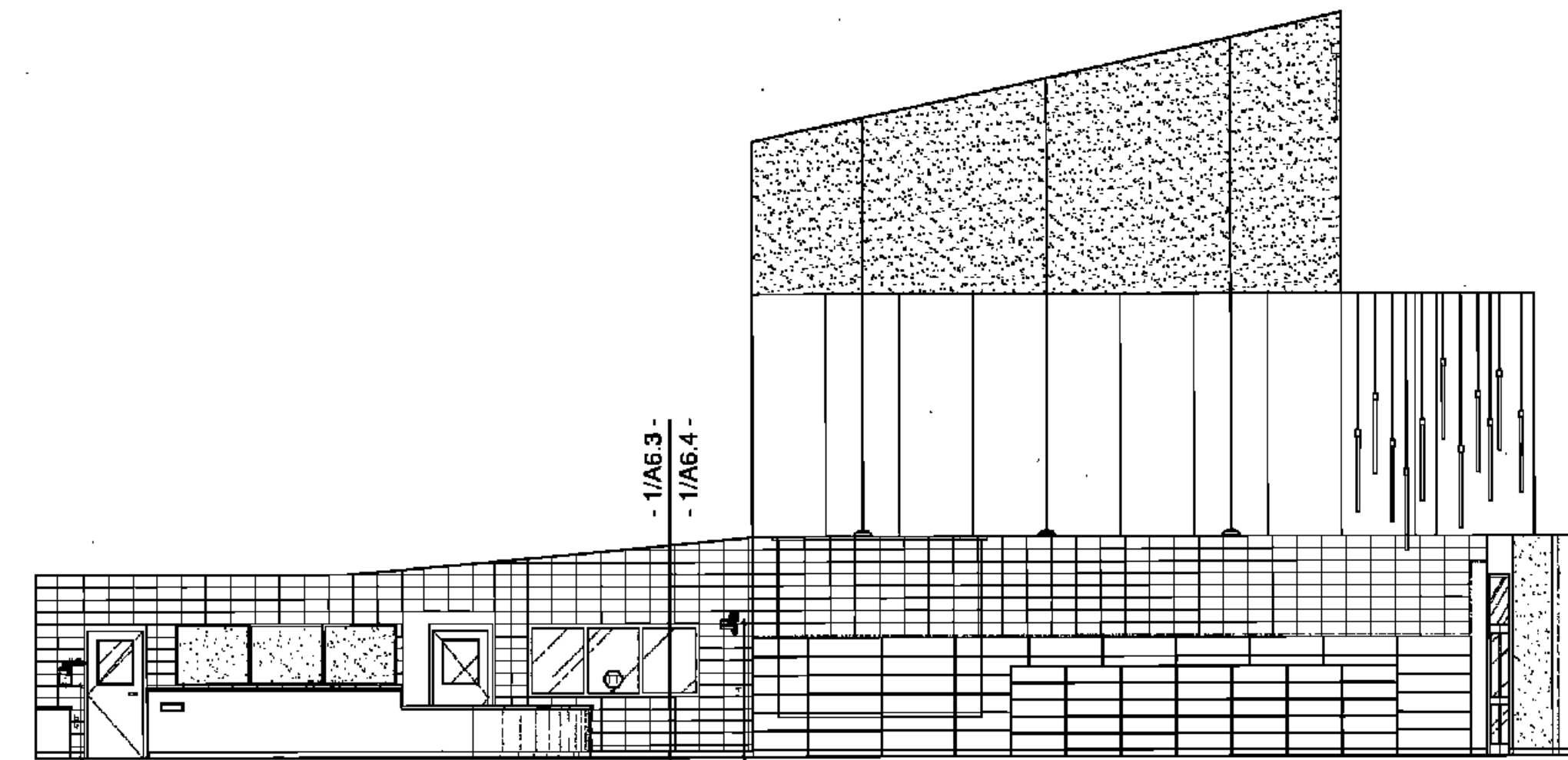
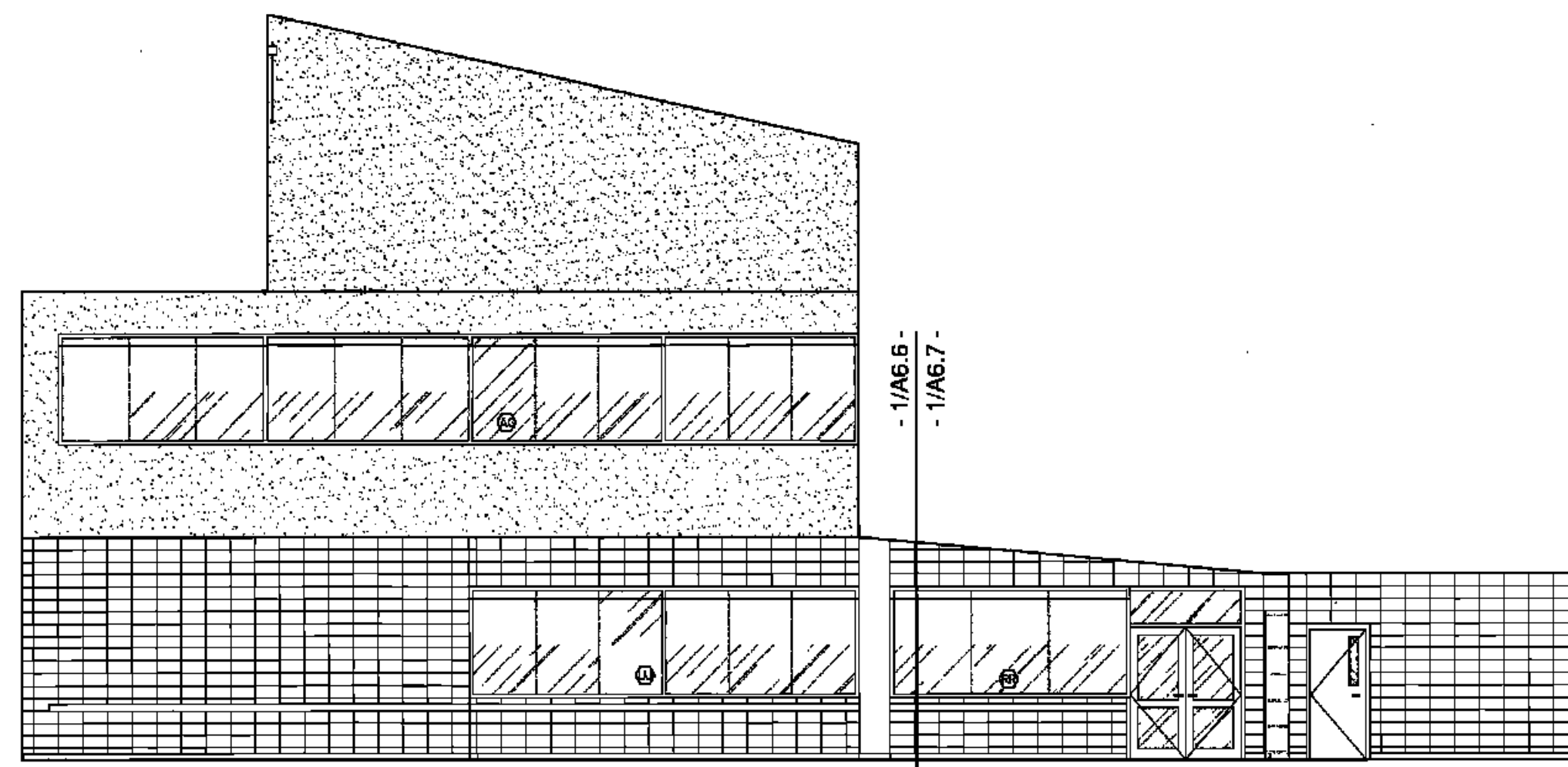


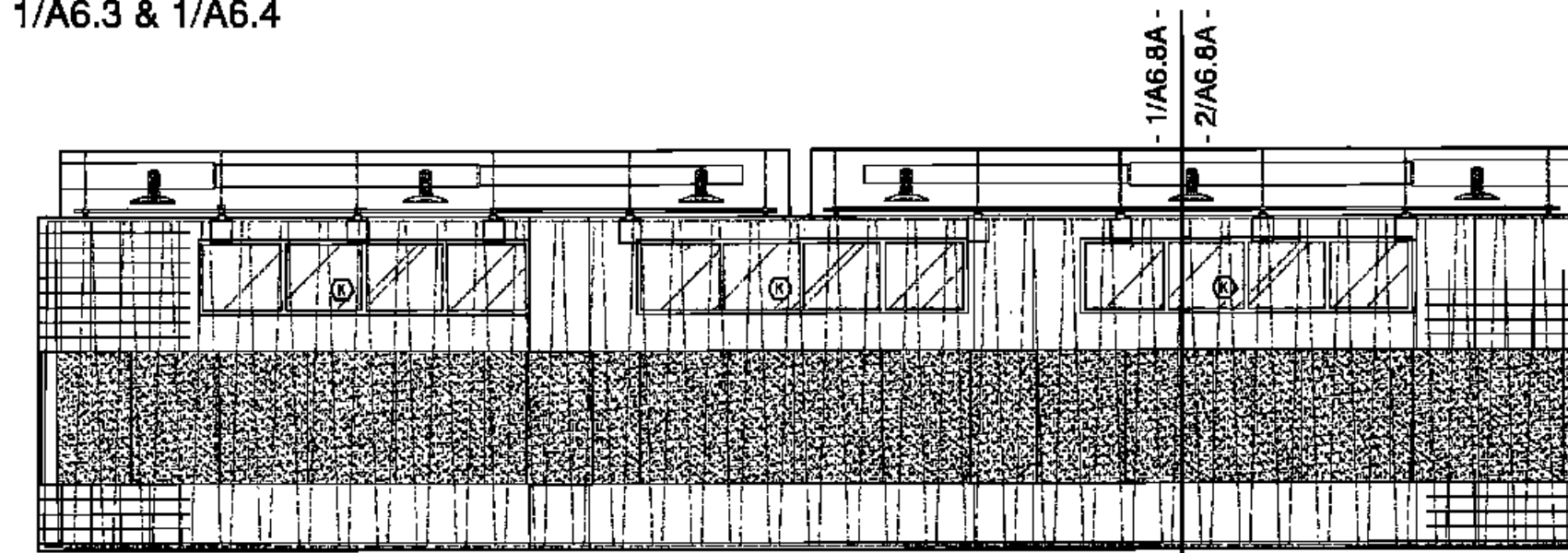
1
A6.0 OVERALL WEST ELEVATION - LOBBY
- SEE 1/A6.0A & 1/A6.1



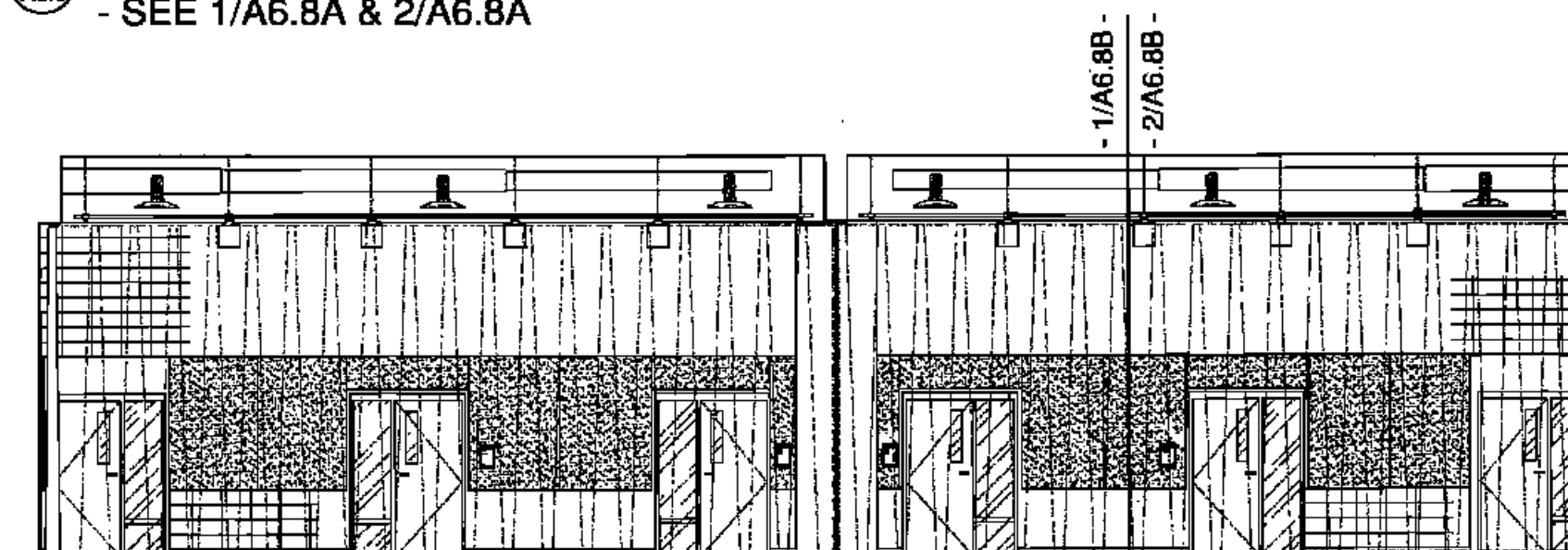
2
A6.0 OVERALL WEST ELEVATION - LIBRARY
- SEE 1/A6.3 & 1/A6.4



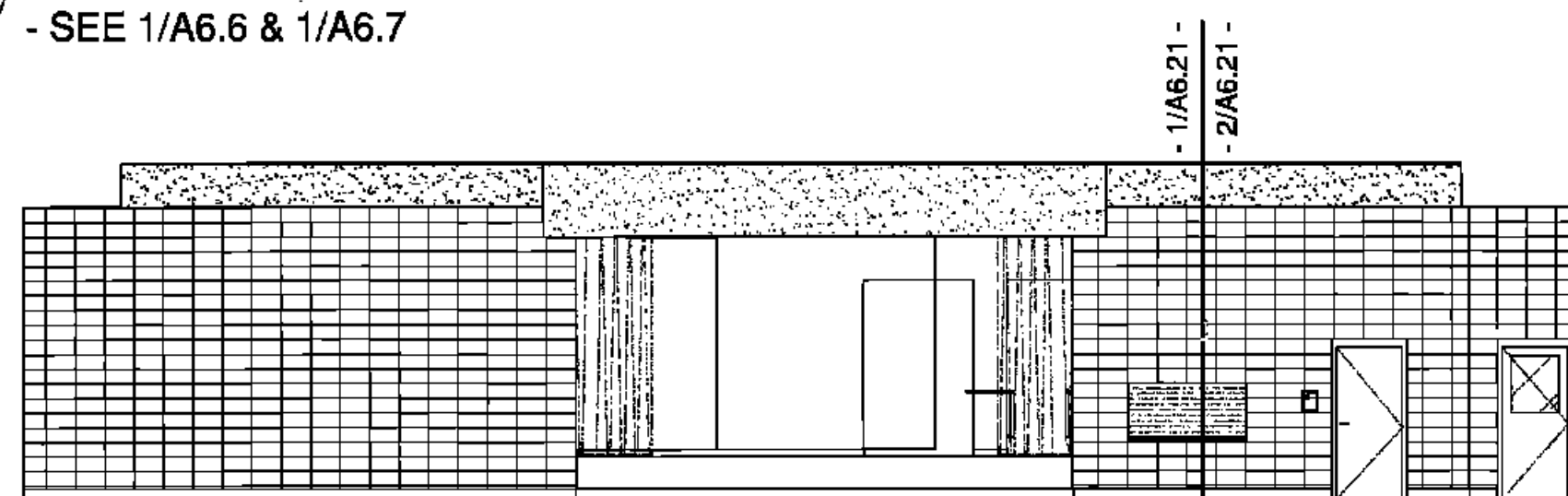
3
A6.0 OVERALL EAST ELEVATION - LIBRARY
- SEE 1/A6.6 & 1/A6.7



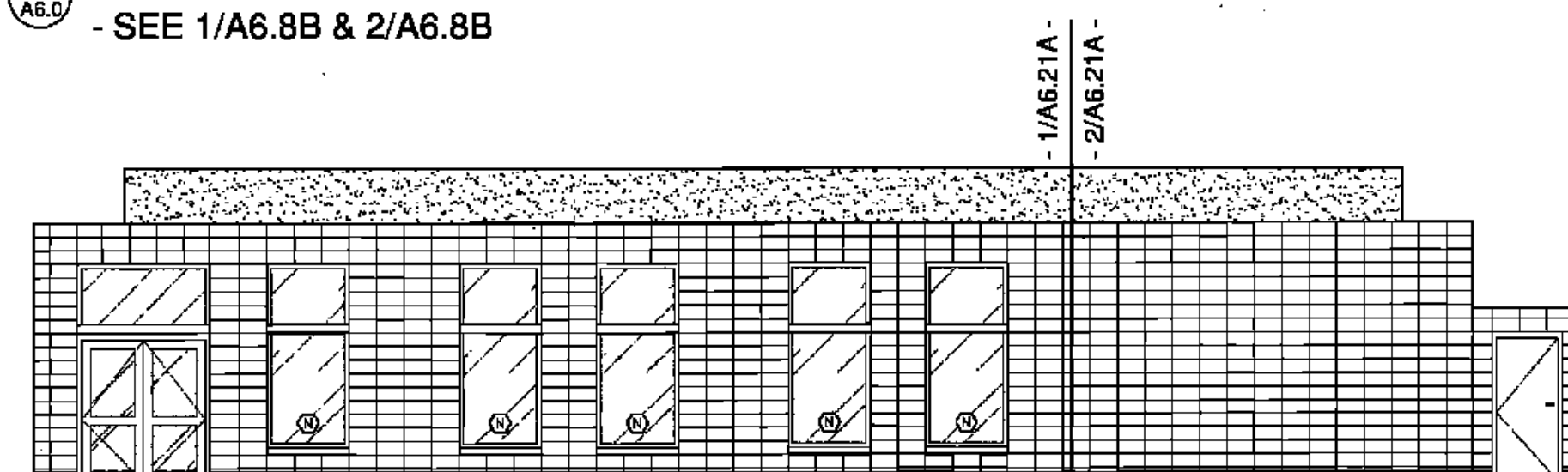
4
A6.0 OVERALL WEST ELEVATION - MUSIC/PERFORMANCE ROOM
- SEE 1/A6.8A & 2/A6.8A



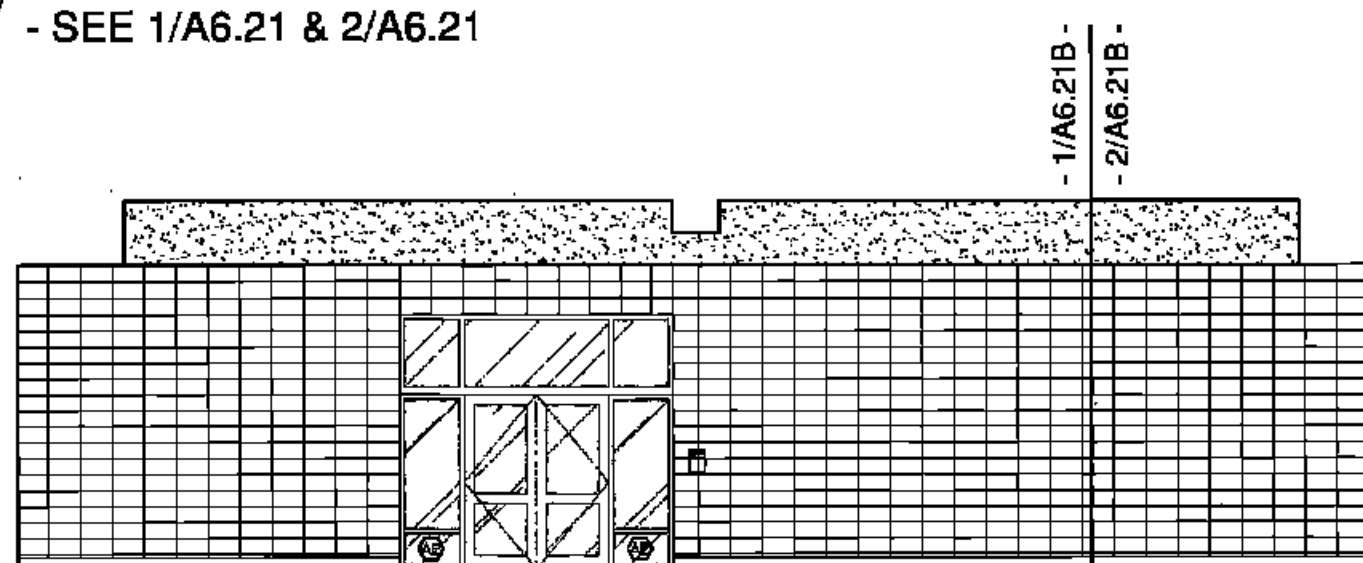
5
A6.0 OVERALL EAST ELEVATION - MUSIC/PERFORMANCE ROOM
- SEE 1/A6.8B & 2/A6.8B



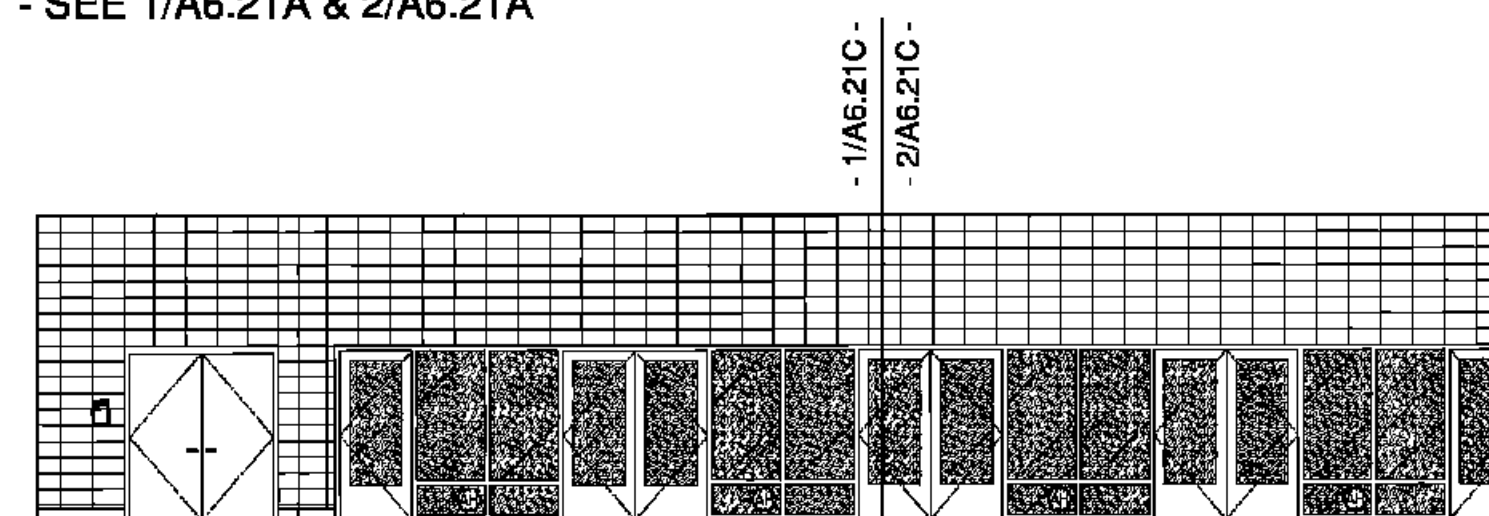
6
A6.0 OVERALL WEST ELEVATION - STUDENT DINING/ASSEMBLY
- SEE 1/A6.21 & 2/A6.21



7
A6.0 OVERALL EAST ELEVATION - STUDENT DINING/ASSEMBLY
- SEE 1/A6.21A & 2/A6.21A



8
A6.0 OVERALL SOUTH ELEVATION - STUDENT DINING/ASSEMBLY
- SEE 1/A6.21B & 2/A6.21B



9
A6.0 OVERALL NORTH ELEVATION - STUDENT DINING/ASSEMBLY
- SEE 1/A6.21C & 2/A6.21C

RSD
LOUISIANA

LEGEND

- | | |
|--|--|
| 1 GYPSUM FURDOWN (RE: FIN. SCH.) | 38 SHOWER CURTAIN ROD |
| 2 CMU (RE: FIN. SCH.) | 39 EDGE OF PILASTER |
| 3 ACOUSTICAL WALL PANELS (RE: FIN. SCH.) | 40 PARTITION MNTD DISP. (NIC) |
| 4 WINDOW SYSTEM (RE: WIN. SCH.) | 41 WALL MOUNTED SINK |
| 5 LIGHT FIXTURE (RE: ELEC) | 42 UNDERMOUNT SINK |
| 6 LAMINATE SURFACE COUNTER TOP | 43 UTILITY SINK |
| 7 ETCHED GLASS SIGNAGE (RE: SPECS) | 44 TACK STRIP |
| 8 BACKSPASH TO MATCH COUNTER | 45 PRECAST CONCRETE (RE: STR DWGS) |
| 9 WOOD CABINETS W/ LAMINATE FINISH | 46 PIN-MOUNTED SIGNAGE |
| 10 WOOD CABINETS W/ GLASS INSERT | 47 SAFETY SHOWER, RE: SPECS |
| 11 PAINTED CABINETS/ SHELVES | 48 ELECTRONIC WHITE BOARD |
| 12 MIRROR | 49 FLAG HOLDER |
| 13 TACK BOARD | 50 SURFACE RACEWAY |
| 14 BLACK EPOXY RESIN COUNTER TOP | 51 ROOM PLAQUE |
| 15 LIGHT SHELF | 52 DECORATIVE HANDRAIL SYSTEM (RE: SPECS) |
| 16 VENTHOOD | 53 MOTORIZED WINDOW SHADE |
| 17 MARKER BOARD | 54 STAGE CURTAINS (RE: FIN SCH & FLR PLN) |
| 18 SOAP DISPENSER (NIC) | 55 MOTORIZED BLEACHERS W/ INTEGRAL HANDRAIL SYSTEM |
| 19 HAND DRYER | 56 CEILING MNTD RETRACTABLE PROJECTION SCREEN |
| 20 WALL CLOCK | 57 DOOR (RE: DOOR SCH.) |
| 21 WALL PADS (RE: FIN. SCH.) | 58 NOT USED |
| 22 SCORE BOARD | 59 BASKETBALL BACKSTOP |
| 23 PIN MOUNTED SIGNAGE | 60 MECH DUCTWORK (RE:MECH) |
| 24 FIRE STATION | 61 LIGHT FIXTURE (RE: ELEC) |
| 25 TOWEL DISPENSER | 62 TRUSSES (RE: STRUCTURAL) |
| 26 CLUBBIES | 63 SCOREBOARD (RE: SPECS) |
| 27 EDGE OF WALL | 64 ELECTRIC DIVIDER CURTAIN SECURED TO STRUCTURE. |
| 28 MAP HOOKS | 65 RECESSED WALL |
| 29 SHOWER SEAT | 66 LIGHTWGT CURTAIN (RE:FIN SCH & FR PLN) |
| 30 WATER FOUNTAIN | 67 SUSPENDED PIPE GRID SYSTEM SECURED TO STRUC. |
| 31 FLR BASE (RE: FIN SCH) | 68 POWER JUNCTION BOX SECURED TO PIPE GRID SYS. |
| 32 SOAP DISH (NIC) | 69 MOTOR OPERATED FOLDING PARTITION WALL |
| 33 METAL STORAGE RACK | 70 PARTITION STACK STORAGE |
| | 71 CIRCULATION DESK |
| | 72 LIBRARY SHELVING SYSTEM |

BIDDING DOCUMENTS		05/04/10
NO. REVISION	DATE	
PARKVIEW SCHOOL 4617 MIRABEAU AVE. NEW ORLEANS, LA 70128		PROJECT
09009	JOB NO	
INTERIOR ELEVATIONS		TITLE
1/8" = 1'-0"		SCALE
MM/AB / CW	DRAWN/CHK	

A-6.0

FULLY SPRINKLERED BUILDING

RWA

ROZAS WARD ARCHITECTS

A PROFESSIONAL CORPORATION www.rozas-ward.com

1100 POYDRAS ST., SUITE 3550 NO LA 70183 504 524 4375

ONE AND ONE HALF INCHES = ONE FOOT
THREE INCH = ONE FOOT
ONE HALF INCH = ONE FOOT
ONE QUARTER INCH = ONE FOOT
ONE EIGHT INCH = ONE FOOT