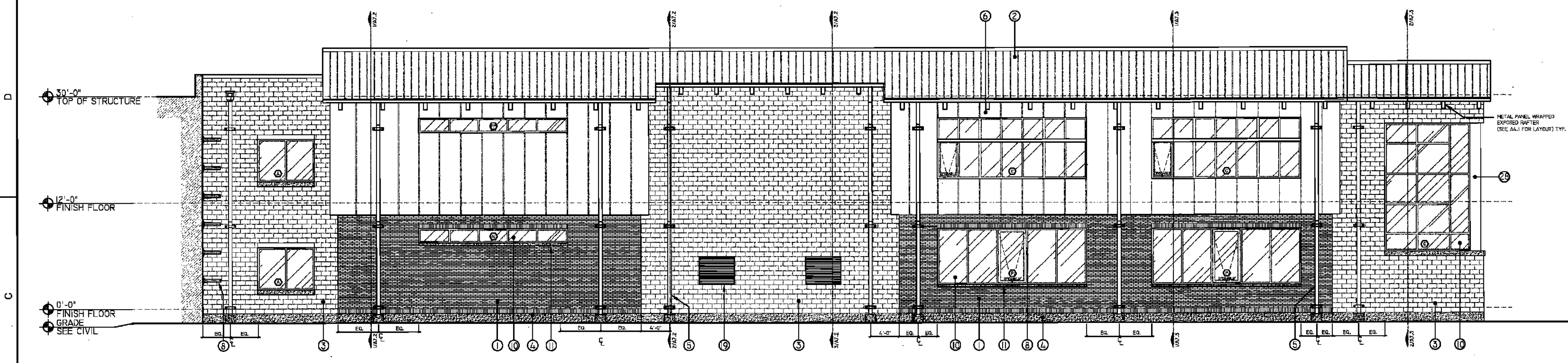
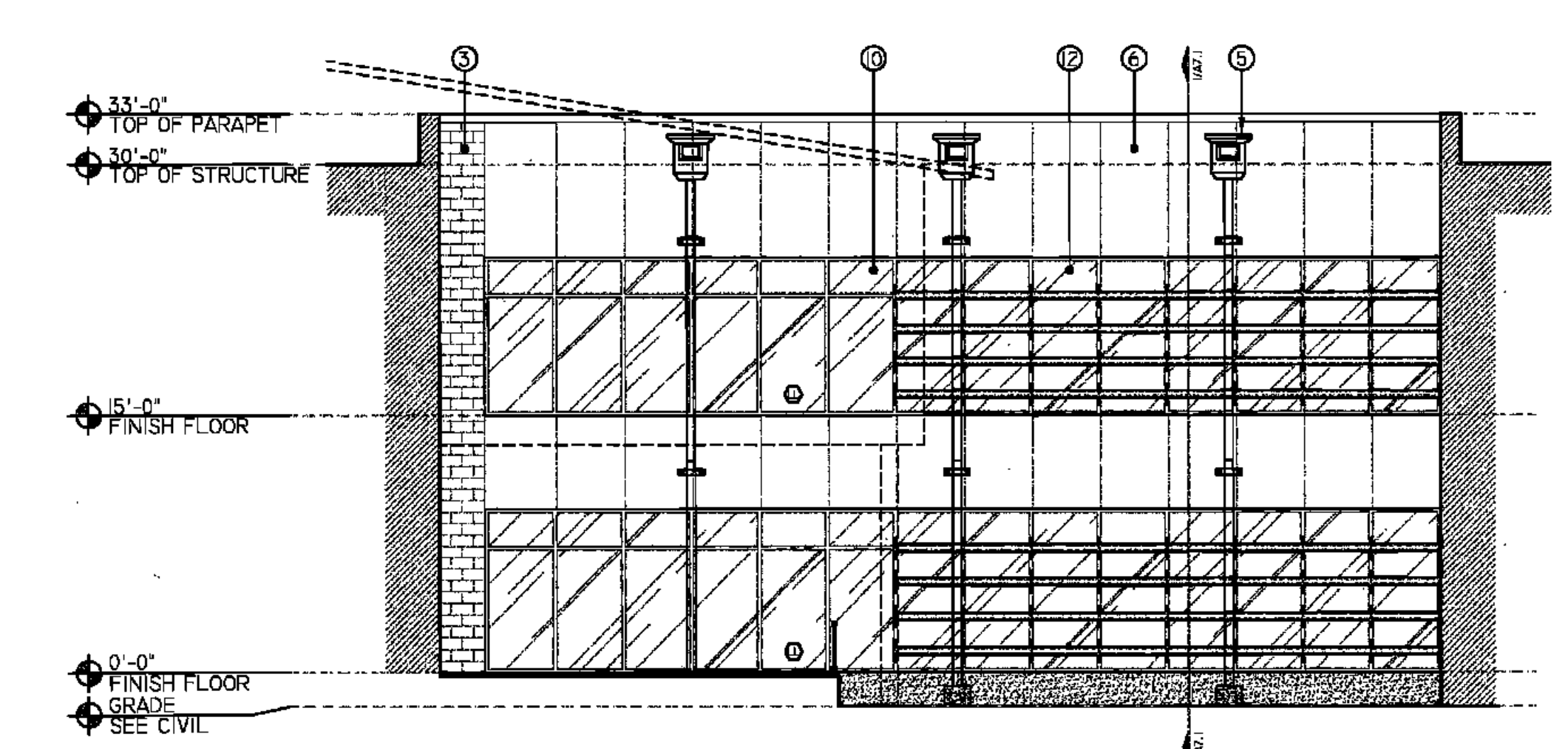


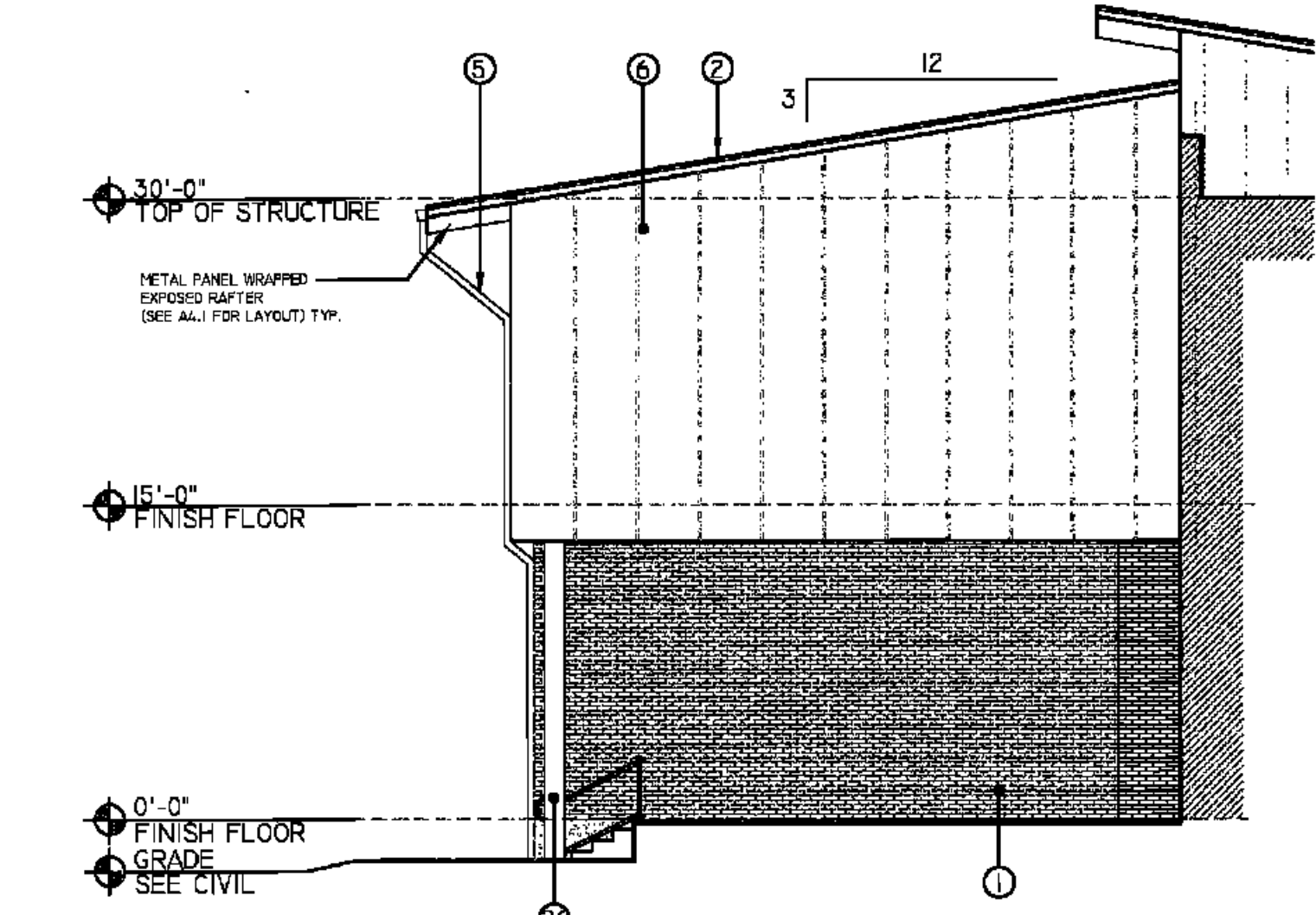
1 EAST ELEVATION - CLASSROOM WING I & II



2 SOUTH ELEVATION - CLASSROOM WING II



3 EAST ELEVATION - MAIN CORRIDOR



4 WEST ELEVATION - CLASSROOM WING I

RSD
LOUISIANA

LEGEND

- 1 BRICK VENEER
- 2 STANDING SEAM METAL ROOF
- 3 SPLITFACE CONCRETE MASONRY UNIT
- 4 EXPOSED FOUNDATION
- 5 ROOF LEADER
- 6 VERTICAL INSULATED METAL PANEL SYSTEM (RE: SPECS)
- 7 METAL PANEL CANOPY
- 8 SUN SHADE / LOUVRE DEVICE PER WINDOW MANUFACTURER
- 9 SCREENING PANEL
- 10 GLAZING UNIT / DOOR ASSEMBLY
- 11 CAST STONE SILL/COPING CAP
- 12 DECORATIVE METAL RAILING SYSTEM
- 13 EXT. LIGHTING FIXTURE (RE: LIGHTING DWGS)
- 14 BITUMED ROOFING SYSTEM
- 15 EXTRUDED METAL SIGNAGE
- 16 METAL COPING/FLASHING CAP
- 17 POURED IN PLACE CONCRETE
- 18 CORRUGATED METAL PANEL SYSTEM (RE: SPECS)
- 19 MECHANICAL LOUVER (RE: MECH. DWGS)
- 20 EXHAUST LOUVER (RE: MECH. DWGS)
- 21 DEDICATION PLAQUE (RE: A9.16)
- 22 CERAMIC FRITTED SIGNAGE (RE: WIN. DWGS)
- 23 LOUVRE PANEL SYSTEM
- 24 COMPOSITE FENCING
- 25 ROOF ACCESS LADDER
- 26 CONCRETE ENCASED COLUMN
- 27 PAINTED METAL COLUMN
- 28 BREAK METAL WRAP
- 29 OVERFLOW SCUPPER
- 30 PANELIZED LOUVRE SYSTEM
- 31 METAL PANEL (SOFFIT)

KEY PLAN

BIDDING DOCUMENTS 05/04/10	
NO. REVISION	DATE
PARKVIEW SCHOOL PROJECT	
4617 MIRABEAU AVE. NEW ORLEANS, LA 70126	
09009	JOB NO
EXTERIOR ELEVATIONS TITLE	
1/8" = 1'-0" SCALE	
MMM/AB / CW	DRAWN/CHK

A-5.5

FULLY SPRINKLERED BUILDING

ROZAS · WARD ARCHITECTS

A PROFESSIONAL CORPORATION www.rozas-ward.com

1100 POYDRAS ST. SUITE 3350 NO LA 70163 504 524 4375

ONE AND ONE HALF INCHES = ONE FOOT

ONE HALF INCH = ONE FOOT

ONE QUARTER INCH = ONE FOOT

ONE EIGHT INCH = ONE FOOT