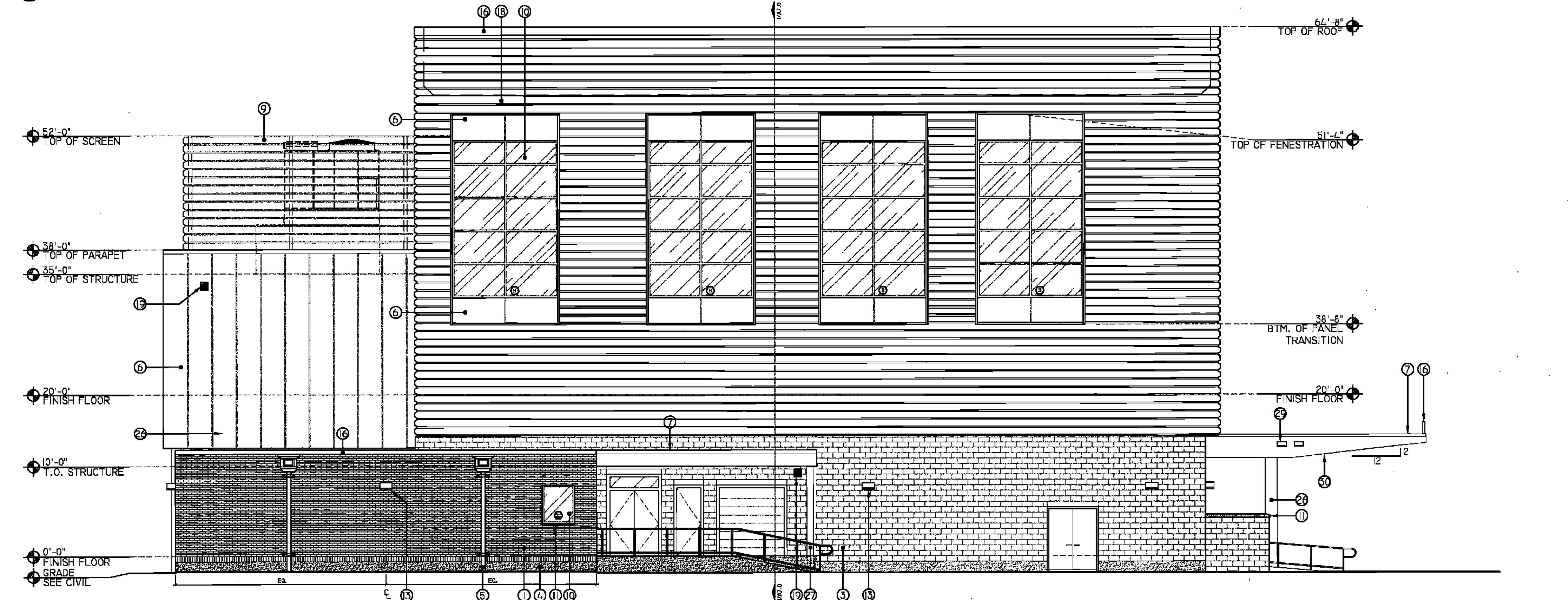


1 WEST ELEVATION - PERFORMANCE WING
A5.3

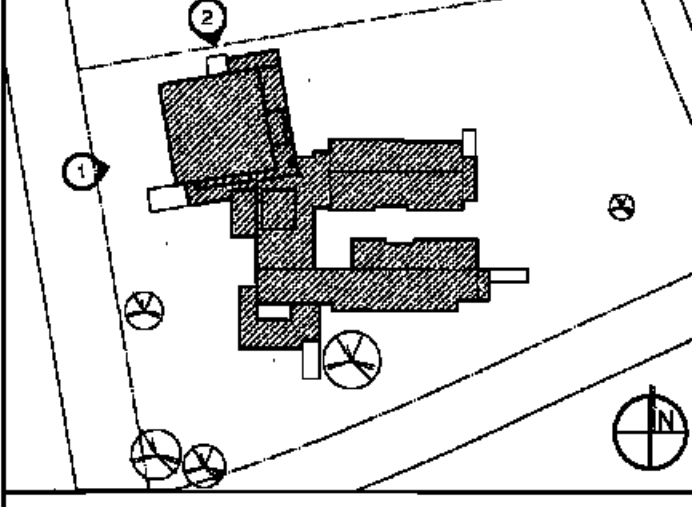


2 NORTH ELEVATION - PERFORMANCE WING
A5.3

LEGEND

- 1 BRICK VENEER
- 2 STANDING SEAM METAL ROOF
- 3 SPLITFACE CONCRETE MASONRY UNIT
- 4 EXPOSED FOUNDATION
- 5 ROOF LEADER
- 6 VERTICAL INSULATED METAL PANEL SYSTEM (RE: SPECS)
- 7 METAL PANEL CANOPY
- 8 SUN SHADE / LOUVRE DEVICE PER WINDOW MANUFACTURER
- 9 SCREENING PANEL
- 10 GLAZING UNIT / DOOR ASSEMBLY
- 11 CAST STONE SILL/COPING CAP
- 12 DECORATIVE METAL RAILING SYSTEM
- 13 EXT. LIGHTING FIXTURE (RE: LIGHTING DWGS)
- 14 BITUMEN ROOFING SYSTEM
- 15 EXTRUDED METAL SIGNAGE
- 16 METAL COPING/FLASHING CAP
- 17 POURED IN PLACE CONCRETE
- 18 CORRUGATED METAL PANEL SYSTEM (RE: SPECS)
- 19 MECHANICAL LOUVER (RE: MECH. DWGS)
- 20 EXHAUST LOUVER (RE: MECH. DWGS)
- 21 DEDICATION PLAQUE (RE: A9.16)
- 22 CERAMIC FRITTED SIGNAGE (RE: WIN. DWGS)
- 23 LOUVRE PANEL SYSTEM
- 24 COMPOSITE FENCING
- 25 ROOF ACCESS LADDER
- 26 CONCRETE ENCASED COLUMN
- 27 PAINTED METAL COLUMN
- 28 BREAK METAL WRAP
- 29 OVERFLOW SCUPPER
- 30 PANELIZED LOUVRE SYSTEM
- 31 METAL PANEL (SOFFIT)

KEY PLAN



BIDDING DOCUMENTS 05/04/10

NO. REVISION DATE

PARKVIEW SCHOOL PROJECT
4817 MIRABEAU AVE.
NEW ORLEANS, LA 70126

09009 JOB NO

EXTERIOR ELEVATIONS TITLE

1/8" = 1'-0" SCALE

MMW/AB / CW DRAWN/CHK

A-5.3
FULLY SPRINKLERED
BUILDING

ONE AND ONE-HALF INCHES - ONE FOOT
THREE ONE INCH - ONE FOOT
ONE HALF INCH - ONE FOOT
ONE QUARTER INCH - ONE FOOT
ONE EIGHT INCH - ONE FOOT