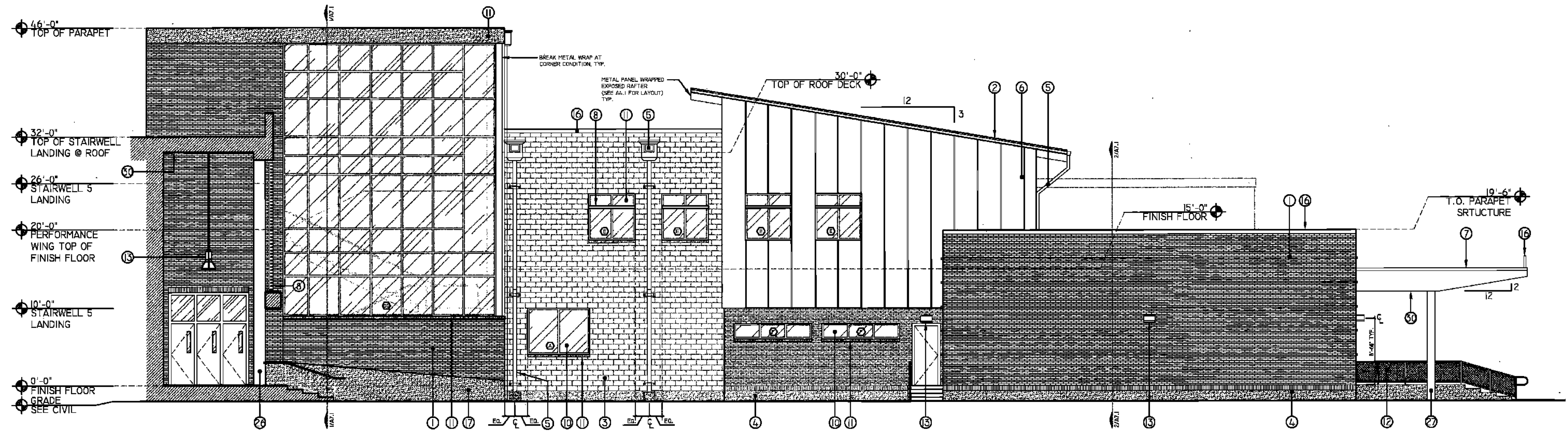


R:\Projects\2009 Projects\09009 - Parkview Elementary\04 Construction Elevations.dwg, 5/2/2010 4:27:36 PM, DWG To PDF.pc3

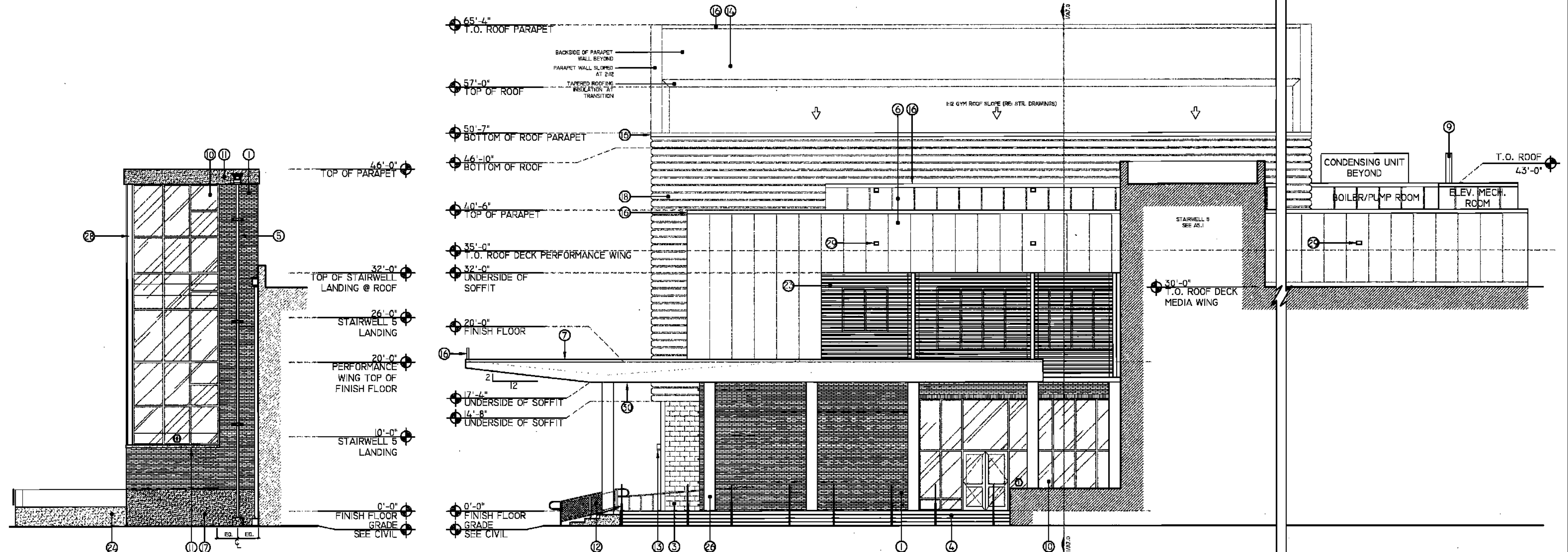


LEGEND

- 1 BRICK VENEER
- 2 STANDING SEAM METAL ROOF
- 3 SPLITFACE CONCRETE MASONRY UNIT
- 4 EXPOSED FOUNDATION
- 5 ROOF LEADER
- 6 VERTICAL INSULATED METAL PANEL SYSTEM (RE: SPECS)
- 7 METAL PANEL CANOPY
- 8 SUN SHADE / LOUVRE DEVICE PER WINDOW MANUFACTURER
- 9 SCREENING PANEL
- 10 GLAZING UNIT / DOOR ASSEMBLY
- 11 CAST STONE SILL/COPING CAP
- 12 DECORATIVE METAL RAILING SYSTEM
- 13 EXT. LIGHTING FIXTURE (RE: LIGHTING DWGS)
- 14 BITUMEN ROOFING SYSTEM
- 15 EXTRUDED METAL SIGNAGE
- 16 METAL COPING/FLASHING CAP
- 17 POURED IN PLACE CONCRETE
- 18 CORRUGATED METAL PANEL SYSTEM (RE: SPECS)
- 19 MECHANICAL LOUVER (RE: MECH. DWGS)
- 20 EXHAUST LOUVER (RE: MECH. DWGS)
- 21 DEDICATION PLAQUE (RE: A9.16)
- 22 CERAMIC FRITTED SIGNAGE (RE: WIN. DWGS)
- 23 LOUVRE PANEL SYSTEM
- 24 COMPOSITE FENCING
- 25 ROOF ACCESS LADDER
- 26 CONCRETE ENCASED COLUMN
- 27 PAINTED METAL COLUMN
- 28 BREAK METAL WRAP
- 29 OVERFLOW SCUPPER
- 30 PANELIZED LOUVRE SYSTEM
- 31 METAL PANEL (SOFFIT)

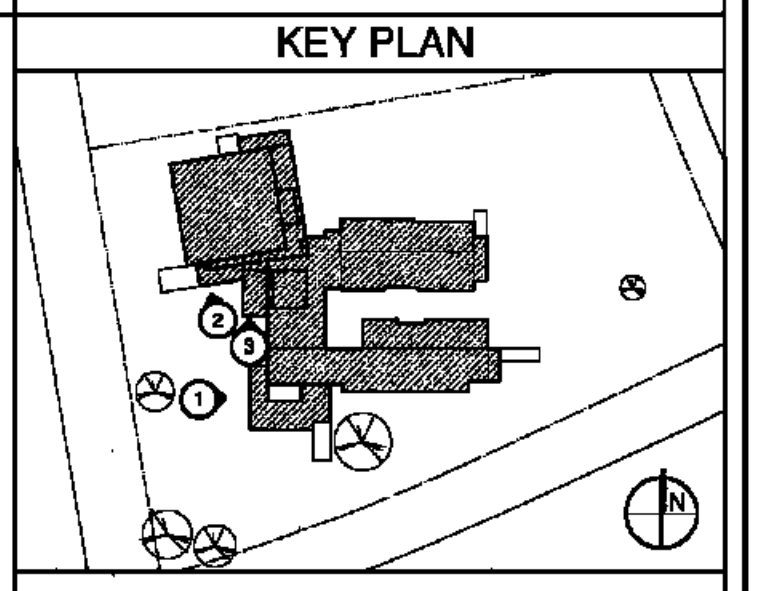


1 AS.2 WEST ELEVATION @ LIBRARY & ADMINISTRATION



3 AS.2 SOUTH ELEVATION - STAIRWELL 5

2 AS.2 SOUTH ELEVATION - PERFORMANCE WING



BIDDING DOCUMENTS	05/04/10
NO. REVISION	DATE
PARKVIEW SCHOOL 4817 MIRABEAU AVE. NEW ORLEANS, LA 70126	PROJECT
09009	JOB NO
EXTERIOR ELEVATIONS	TITLE
1/8" = 1'-0"	SCALE
MMM/AB / CW	DRAWN/CHK

A-5.2

FULLY SPRINKLERED BUILDING

RWA

ROZAS-WARD ARCHITECTS

A PROFESSIONAL CORPORATION www.rozas-ward.com
1100 ROYDRAS ST, SUITE 3850 NO LA 70163 504.524.4375

ONE AND ONE HALF INCHES = ONE FOOT
THREEONE INCH = ONE FOOT
ONE HALF INCH = ONE FOOT
ONE QUARTER INCH = ONE FOOT
ONE EIGHT INCH = ONE FOOT