

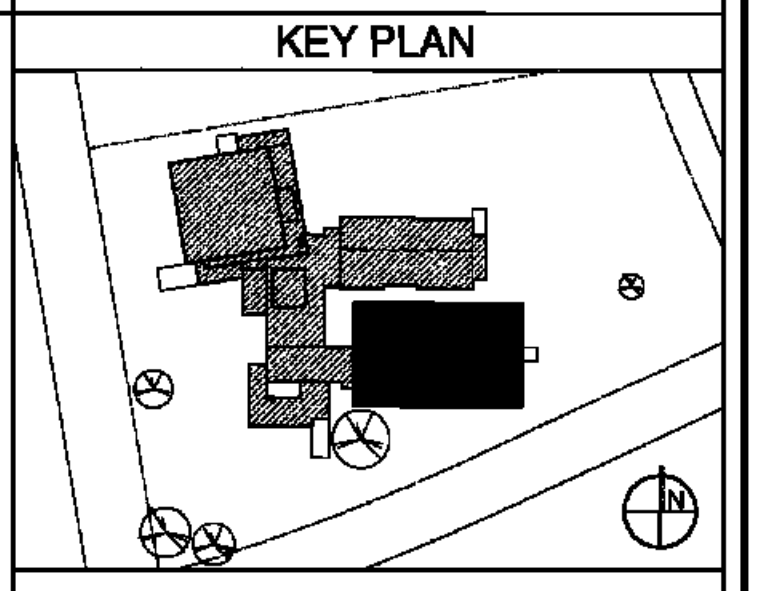
LIGHTING	HVAC
REFER TO ELECTRICAL DRAWINGS FOR FIXTURE TYPE AND MOUNTING INFORMATION.	REFER TO MECHANICAL DRAWINGS FOR ADDITIONAL INFORMATION.

**RSD**  
LOUISIANA

**LEGEND**

- 2'x2' SUSPENDED ACOUSTIC CEILING TILE - TYPE A
- 2'x2' SUSPENDED ACOUSTIC CEILING TILE - TYPE B
- GYPSUM BOARD TYPE A
- GYPSUM BOARD TYPE B
- PLASTER
- METAL PANEL SOFFIT

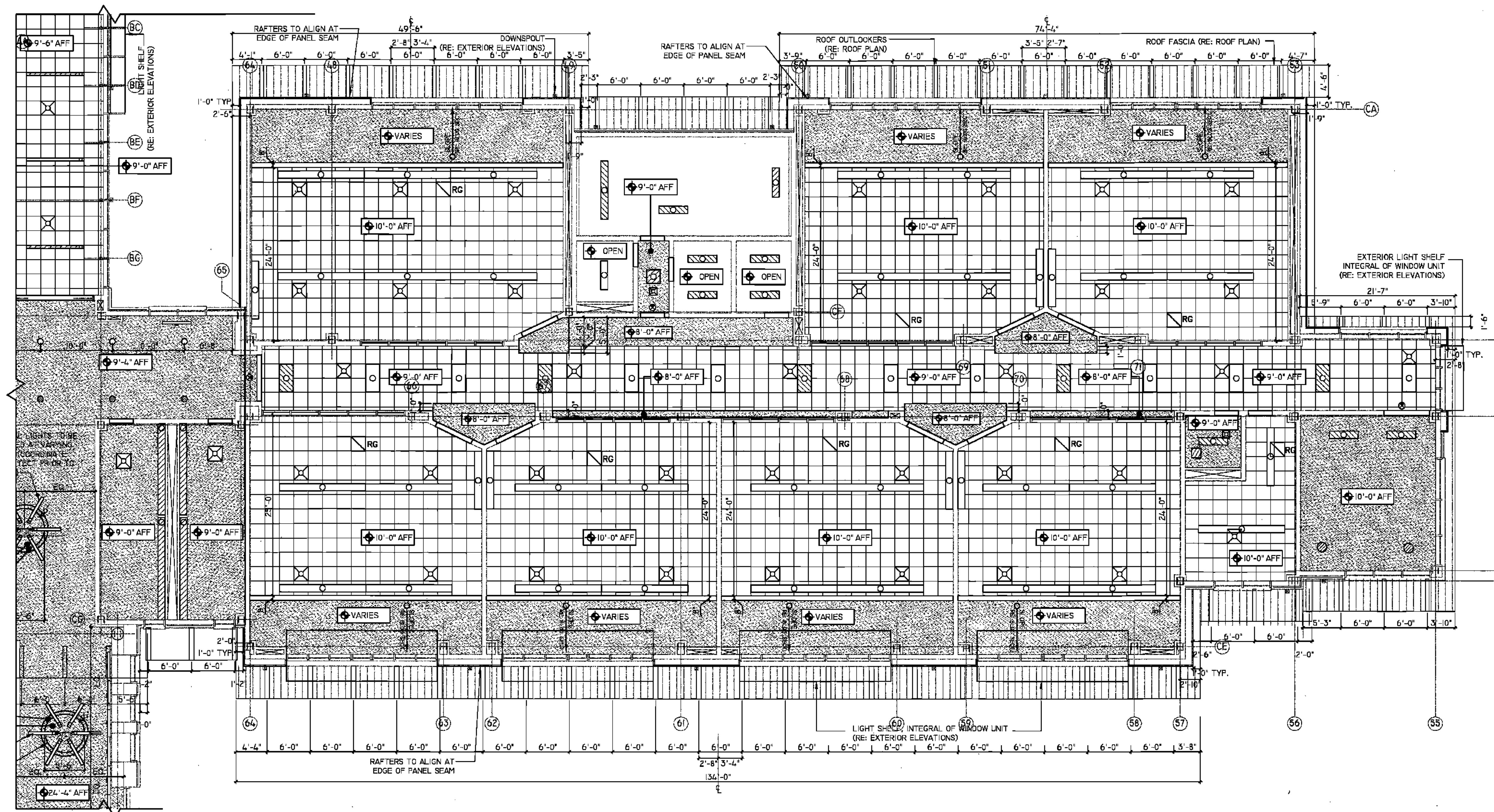
- GENERAL NOTES**
1. THE CONTRACTOR SHALL COORDINATE ALL ELECTRICAL FIXTURES & HVAC SUPPLY/ RETURN DUCTS WITH ELECTRICAL & HVAC DRAWINGS PRIOR TO CONSTRUCTION.
  2. THE CONTRACTOR SHALL NOTIFY THE ARCHITECT IMMEDIATELY OF POSSIBLE CONFLICTS.
  3. ALL BACKSTOP ACCESSORIES REQUIRED FOR MOUNTING/BRACING SHALL BE PROVIDED BY THE GYM EQUIPMENT MANUFACTURER.
  4. ALL GYM DIVIDER SCREEN ACCESSORIES REQUIRED FOR MOUNTING/BRACING SHALL BE PROVIDED BY THE MANUFACTURER.
  5. ALL SCOREBOARD MOUNTING ACCESSORIES SHALL BE PROVIDED BY THE MANUFACTURER.
  6. ALL GYM EQUIPMENT SHALL BE INSTALLED AS PER THE MANUFACTURER'S INSTRUCTIONS.
  7. THE ELECTRICAL AND MECHANICAL CONTRACTORS SHALL CENTER ALL LIGHTS AND/OR DIFFUSERS WHENEVER POSSIBLE WHETHER IT IS INDICATED IN PLAN OR NOT.



BIDDING DOCUMENTS	05/04/10
NO. REVISION	DATE
PARKVIEW SCHOOL 4617 MIRABEAU AVE. NEW ORLEANS, LA 70126	PROJECT
09009	JOB NO
PARTIAL SECOND FLOOR RCP PLAN	TITLE
1/8" = 1'-0"	SCALE
MMW/AB / CW	DRAWN/CHK

**A-4.11**  
FULLY SPRINKLERED BUILDING

**RWA**  
ROZAS-WARD ARCHITECTS  
A PROFESSIONAL CORPORATION  
1100 POYDRAS ST. SUITE 3550 NO LA 70116 504 584 4375



**1 PARTIAL SECOND FLOOR REFLECTED CEILING PLAN**  
1/8" = 1'-0"

ONE AND ONE HALF INCH = ONE FOOT  
ONE QUARTER INCH = ONE FOOT  
ONE EIGHT INCH = ONE FOOT