

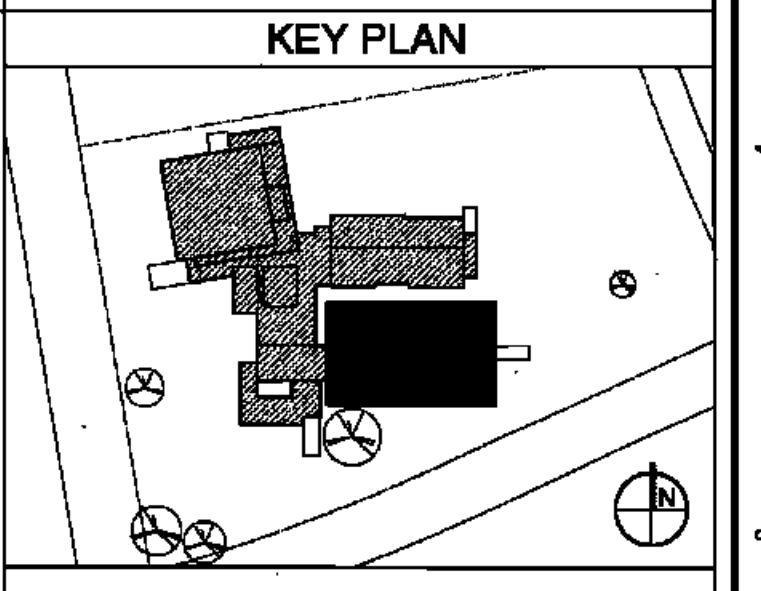
LIGHTING	HVAC
REFER TO ELECTRICAL DRAWINGS FOR FIXTURE TYPE AND MOUNTING INFORMATION.	REFER TO MECHANICAL DRAWINGS FOR ADDITIONAL INFORMATION.

RSD
LOUISIANA

LEGEND

- 2'x2' SUSPENDED ACOUSTIC CEILING TILE - TYPE A
- 2'x2' SUSPENDED ACOUSTIC CEILING TILE - TYPE B
- GYPSUM BOARD TYPE A
- GYPSUM BOARD TYPE B
- PLASTER
- METAL PANEL SOFFIT

- GENERAL NOTES**
1. THE CONTRACTOR SHALL COORDINATE ALL ELECTRICAL FIXTURES & HVAC SUPPLY/ RETURN DUCTS WITH ELECTRICAL & HVAC DRAWINGS PRIOR TO CONSTRUCTION.
 2. THE CONTRACTOR SHALL NOTIFY THE ARCHITECT IMMEDIATELY OF POSSIBLE CONFLICTS.
 3. ALL BACKSTOP ACCESSORIES REQUIRED FOR MOUNTING/BRACING SHALL BE PROVIDED BY THE GYM EQUIPMENT MANUFACTURER.
 4. ALL GYM DIVIDER SCREEN ACCESSORIES REQUIRED FOR MOUNTING/BRACING SHALL BE PROVIDED BY THE MANUFACTURER.
 5. ALL SCOREBOARD MOUNTING ACCESSORIES SHALL BE PROVIDED BY THE MANUFACTURER.
 6. ALL GYM EQUIPMENT SHALL BE INSTALLED AS PER THE MANUFACTURERS INSTRUCTIONS.
 7. THE ELECTRICAL AND MECHANICAL CONTRACTORS SHALL CENTER ALL LIGHTS AND/OR DIFFUSERS WHENEVER POSSIBLE WHETHER IT IS INDICATED IN PLAN OR NOT.

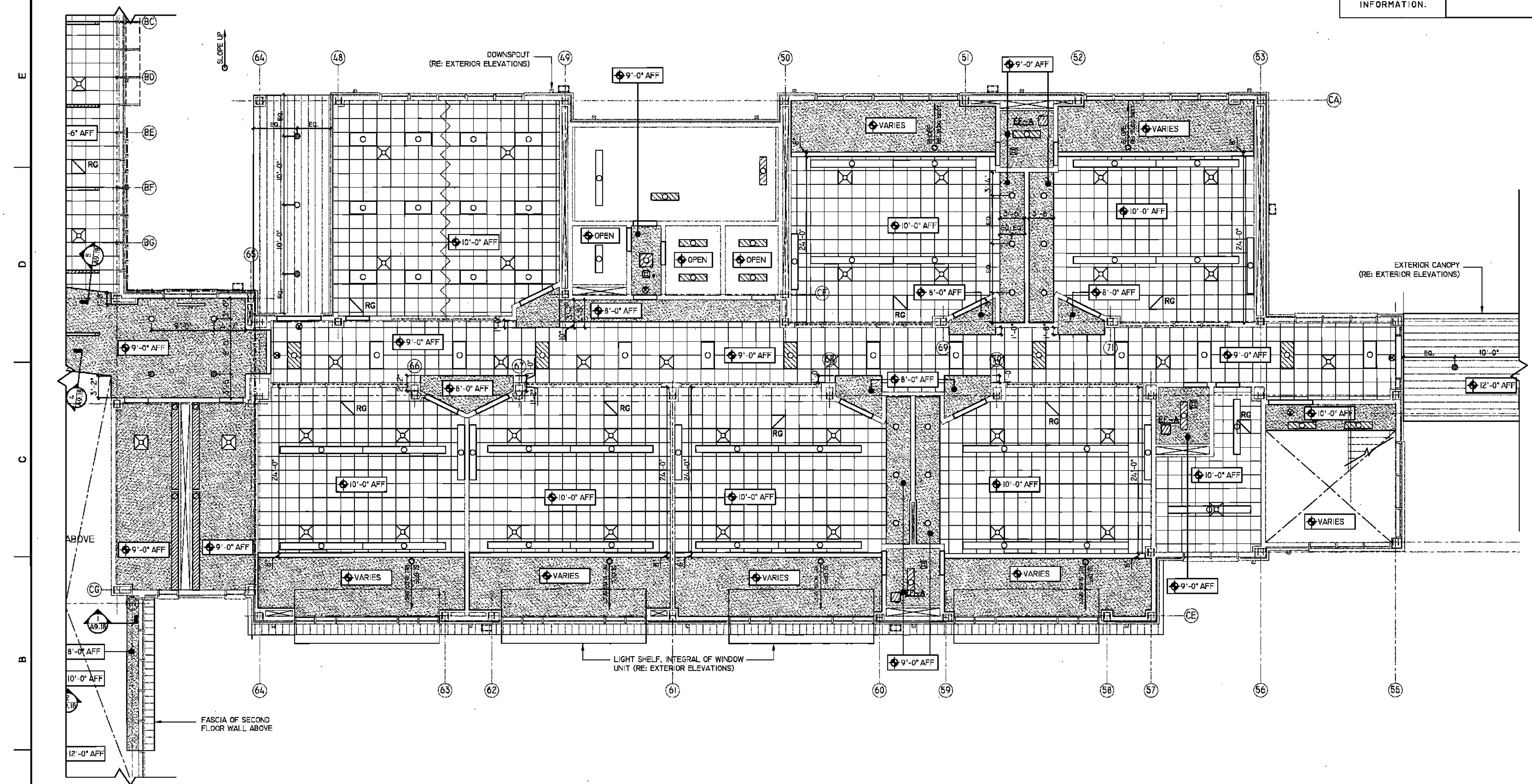


BIDDING DOCUMENTS		05/04/10
NO. REVISION	DATE	
PARKVIEW SCHOOL 4617 MIRABEAU AVE. NEW ORLEANS, LA 70126		PROJECT
09009	JOB NO	
PARTIAL FIRST FLOOR RCP PLAN		TITLE
1/8" = 1'-0"		SCALE
MMM/AB / CW	DRAWN/CHK	

A-4.6
FULLY SPRINKLERED BUILDING

RWA
ROZAS · WARD ARCHITECTS

A PROFESSIONAL CORPORATION www.rozas-ward.com
1100 PONDRAIS ST. SUITE 3550 NO LA 70168 504 534 4375



1 PARTIAL FIRST FLOOR REFLECTED CEILING PLAN
1/8" = 1'-0"

ONE AND ONE HALF INCHES = ONE FOOT
THREE ONE INCH = ONE FOOT
ONE HALF INCH = ONE FOOT
ONE QUARTER INCH = ONE FOOT
ONE EIGHT INCH = ONE FOOT