

LIGHTING	HVAC

REFER TO ELECTRICAL DRAWINGS FOR FIXTURE TYPE AND MOUNTING INFORMATION.

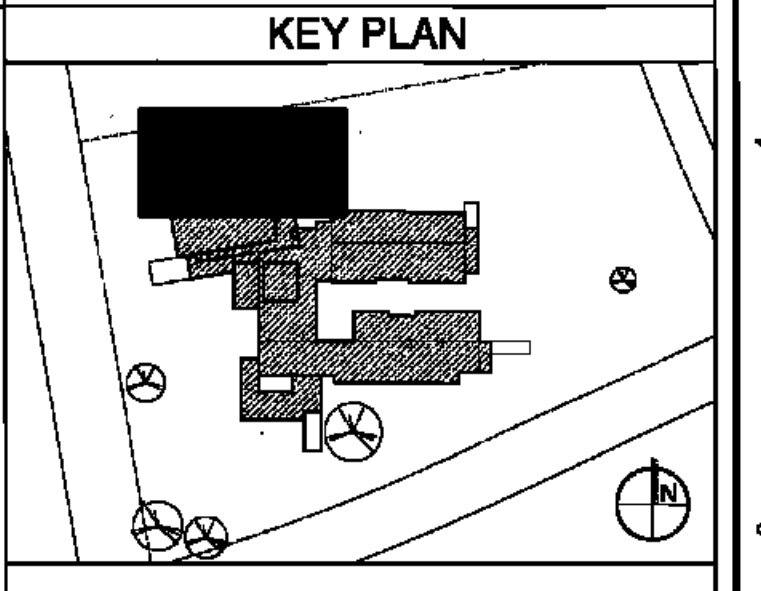
REFER TO MECHANICAL DRAWINGS FOR ADDITIONAL INFORMATION.

**RSD**  
LOUISIANA

**LEGEND**

- 2'x2' SUSPENDED ACOUSTIC CEILING TILE - TYPE A
- 2'x2' SUSPENDED ACOUSTIC CEILING TILE - TYPE B
- GYPSUM BOARD TYPE A
- GYPSUM BOARD TYPE B
- PLASTER
- METAL PANEL SOFFIT

- GENERAL NOTES**
- THE CONTRACTOR SHALL COORDINATE ALL ELECTRICAL FIXTURES & HVAC SUPPLY/ RETURN DUCTS WITH ELECTRICAL & HVAC DRAWINGS PRIOR TO CONSTRUCTION.
  - THE CONTRACTOR SHALL NOTIFY THE ARCHITECT IMMEDIATELY OF POSSIBLE CONFLICTS.
  - ALL BACKSTOP ACCESSORIES REQUIRED FOR MOUNTING/BRACING SHALL BE PROVIDED BY THE GYM EQUIPMENT MANUFACTURER.
  - ALL GYM DIVIDER SCREEN ACCESSORIES REQUIRED FOR MOUNTING/BRACING SHALL BE PROVIDED BY THE MANUFACTURER.
  - ALL SCOREBOARD MOUNTING ACCESSORIES SHALL BE PROVIDED BY THE MANUFACTURER.
  - ALL GYM EQUIPMENT SHALL BE INSTALLED AS PER THE MANUFACTURER'S INSTRUCTIONS.
  - THE ELECTRICAL AND MECHANICAL CONTRACTORS SHALL CENTER ALL LIGHTS AND/OR DIFFUSERS WHENEVER POSSIBLE WHETHER IT IS INDICATED IN PLAN OR NOT.



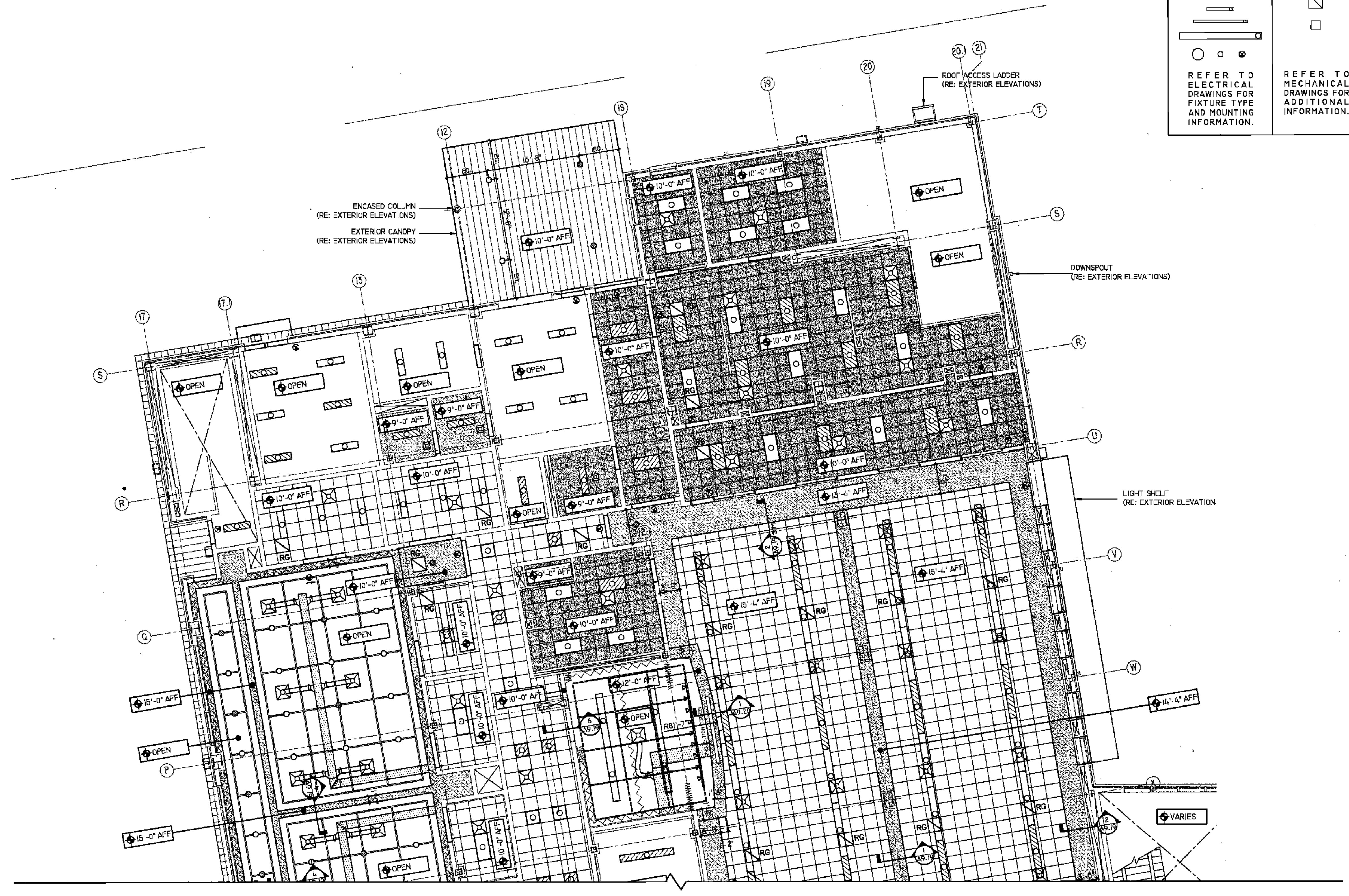
BIDDING DOCUMENTS		05/04/10
NO.	REVISION	DATE
PARKVIEW SCHOOL 4817 MIRABEAU AVE. NEW ORLEANS, LA 70126		PROJECT
09009		JOB NO
PARTIAL FIRST FLOOR RCP PLAN		TITLE
1/8" = 1'-0"		SCALE
MMM/AB / CW		DRAWN/CHK

**A-4.4**  
FULLY SPRINKLERED BUILDING

**RWA**  
ROZAS WARD ARCHITECTS

A PROFESSIONAL CORPORATION [www.rozas-ward.com](http://www.rozas-ward.com)

1100 POYDRAS ST. SUITE 3550 NO LA 70163 504 524 4375



**1 PARTIAL FIRST FLOOR REFLECTED CEILING PLAN**  
1/8" = 1'-0"

ONE AND ONE HALF INCHES = ONE FOOT

THREE ONE EIGHT INCH = ONE FOOT

ONE HALF INCH = ONE FOOT

ONE QUARTER INCH = ONE FOOT

ONE EIGHT INCH = ONE FOOT