

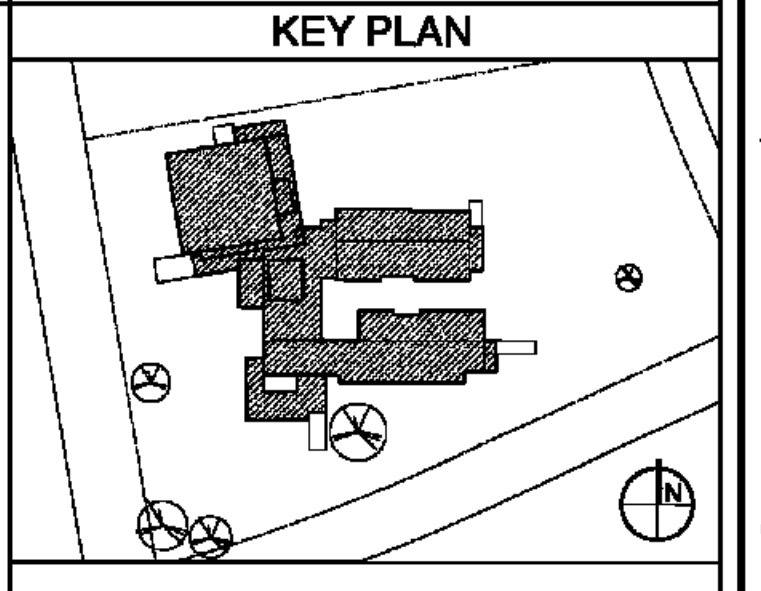
LIGHTING	HVAC
REFER TO ELECTRICAL DRAWINGS FOR FIXTURE TYPE AND MOUNTING INFORMATION.	REFER TO MECHANICAL DRAWINGS FOR ADDITIONAL INFORMATION.

**RSD**  
LOUISIANA

LEGEND

- 2'x2' SUSPENDED ACOUSTIC CEILING TILE - TYPE A
- 2'x2' SUSPENDED ACOUSTIC CEILING TILE - TYPE B
- GYPSUM BOARD TYPE A
- GYPSUM BOARD TYPE B
- PLASTER
- METAL PANEL SOFFIT

- GENERAL NOTES
1. THE CONTRACTOR SHALL COORDINATE ALL ELECTRICAL FIXTURES & HVAC SUPPLY/ RETURN DUCTS WITH ELECTRICAL & HVAC DRAWINGS PRIOR TO CONSTRUCTION.
  2. THE CONTRACTOR SHALL NOTIFY THE ARCHITECT IMMEDIATELY OF POSSIBLE CONFLICTS.
  3. ALL BACKSTOP ACCESSORIES REQUIRED FOR MOUNTING/BRACING SHALL BE PROVIDED BY THE GYM EQUIPMENT MANUFACTURER.
  4. ALL GYM DIVIDER SCREEN ACCESSORIES REQUIRED FOR MOUNTING/BRACING SHALL BE PROVIDED BY THE MANUFACTURER.
  5. ALL SCOREBOARD MOUNTING ACCESSORIES SHALL BE PROVIDED BY THE MANUFACTURER.
  6. ALL GYM EQUIPMENT SHALL BE INSTALLED AS PER THE MANUFACTURERS INSTRUCTIONS.
  7. THE ELECTRICAL AND MECHANICAL CONTRACTORS SHALL CENTER ALL LIGHTS AND/OR DIFFUSERS WHENEVER POSSIBLE WHETHER IT IS INDICATED IN PLAN OR NOT.

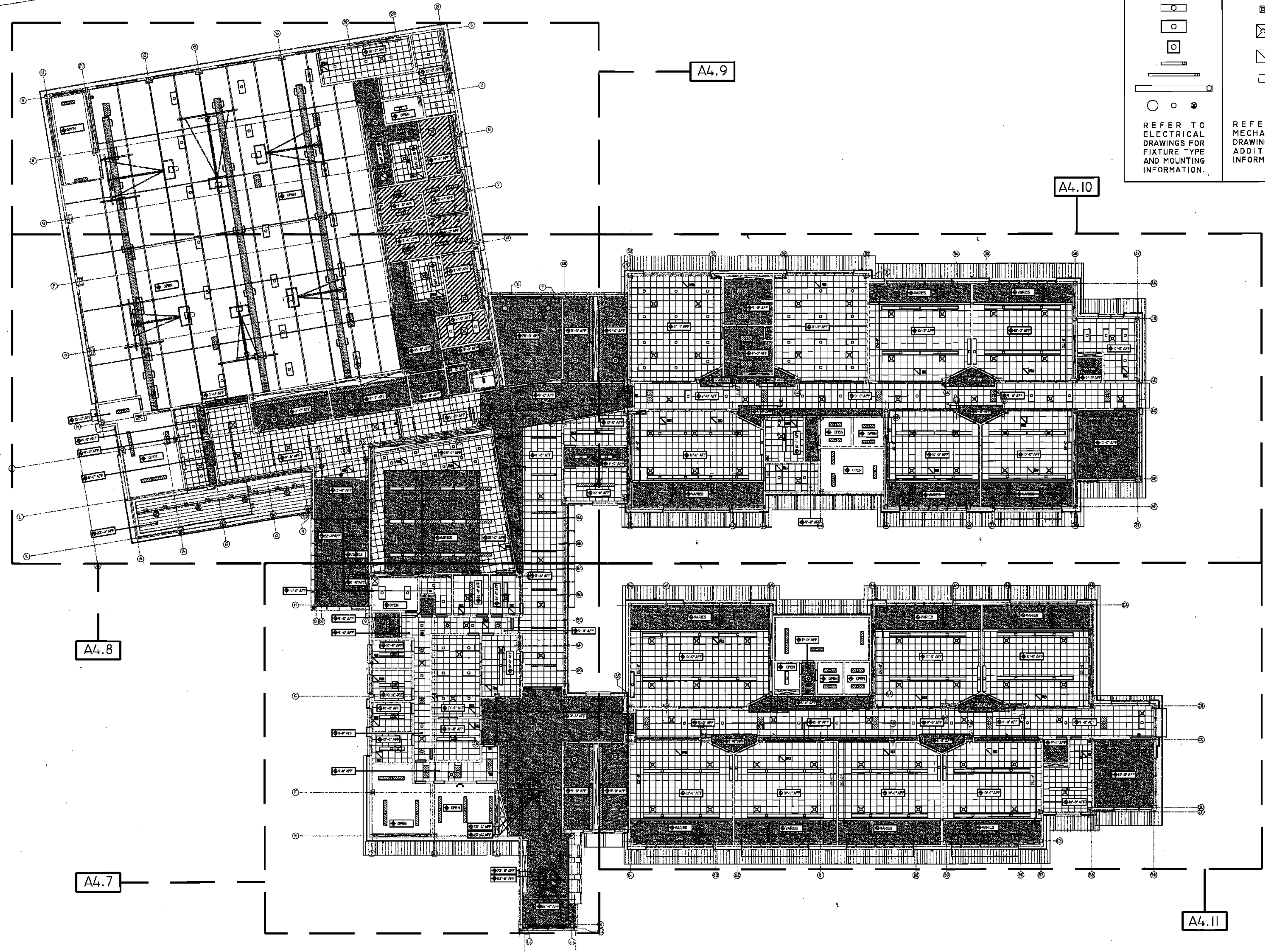


BIDDING DOCUMENTS		05/04/10
NO. REVISION		DATE
PARKVIEW SCHOOL 4617 MIRABEAU AVE. NEW ORLEANS, LA 70126		PROJECT
09009		JOB NO
SECOND FLOOR OVERALL RCP PLAN		TITLE
1/16" = 1'-0"		SCALE
MM/AB / CW		DRAWN/CHK

**A-4.1**  
FULLY SPRINKLERED BUILDING

**RWA**  
ROZAS - WARD ARCHITECTS

A PROFESSIONAL CORPORATION www.rozas-ward.com  
1100 POYDRAS ST. SUITE 3550 NO LA 70168 504 524 4375



1 SECOND FLOOR OVERALL REFLECTED CEILING PLAN  
1/16" = 1'-0"

ONE AND ONE HALF INCHES = ONE FOOT  
THREE ONE INCH = ONE FOOT  
ONE HALF INCH = ONE FOOT  
ONE QUARTER INCH = ONE FOOT  
ONE EIGHT INCH = ONE FOOT