

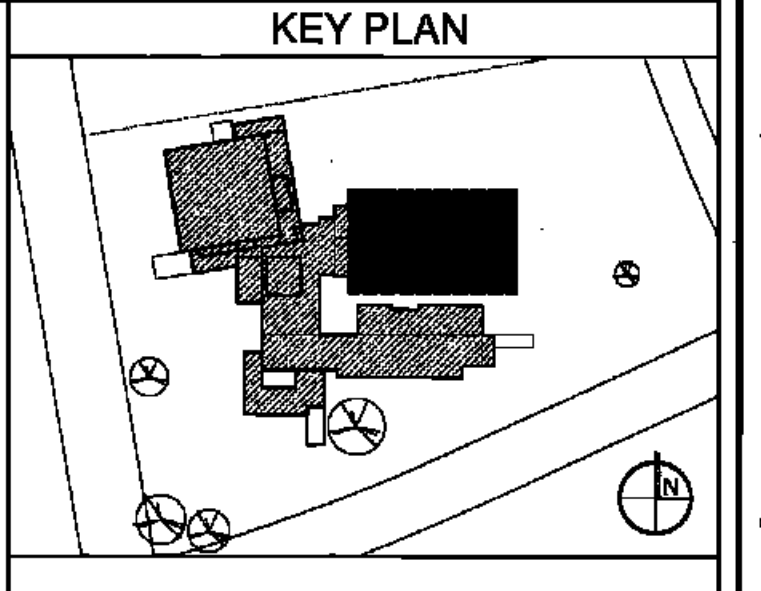
1 FIRST FLOOR PLAN
1/8" = 1'-0"

RSD
LOUISIANA

LEGEND

- ### ROOM TAG
- # WALL TYPE TAG
- #/A#.# PLAN ENLARGEMENT
- # COLUMN LINE
- #/A#.# WALL SECTION
- #/A#.# BUILDING SECTION
- - - BUILDING EXPANSION JOINT

- GENERAL NOTES**
1. SEE A8.20 FOR WALL CONSTRUCTION TYPES.
 2. REFER TO LIFE-SAFETY PLAN FOR FIRE & SMOKE RATED PARTITIONS, TYP.
 3. ENLARGED DIMENSIONED PLANS TO BE USED IN CONJUNCTION WITH OVERALL PLANS, ENLARGED PLANS, BUILDING WALL SECTIONS, AND STRUCTURAL PLANS. SHOULD DIMENSIONAL DISCREPANCIES BE FOUND G.C. TO NOTIFY ARCHITECT IMMEDIATELY.
 4. ALL DIMENSIONS, UNLESS NOTED OTHERWISE, ARE TAKEN FROM EXTERIOR FACES OF EXTERIOR WALLS, FINISH FACE OF INTERIOR PARTITIONS, AND CENTER LINES OF STRUCTURAL COLUMNS. SEE STRUCT. SHEETS FOR FINAL SLABS, BEAM, AND COLUMN LOCATIONS & DIMS.



BIDDING DOCUMENTS		05/04/10
NO. REVISION	DATE	
PARKVIEW SCHOOL 4617 MIRABEAU AVE. NEW ORLEANS, LA 70126		PROJECT
09009	JOB NO	
ENLARGED DIMENSIONED FIRST FLOOR PLAN		TITLE
1/8" = 1'-0"		SCALE
MM/AB / CW	DRAWN/CHK	

A-3.13
FULLY SPRINKLERED
BUILDING

RWA
ROZAS WARD ARCHITECTS
A PROFESSIONAL CORPORATION
www.rozas-ward.com
1100 POYDRAS ST. SUITE 3550 NO LA 70183 504.524.4375

ONE AND ONE HALF INCHES = ONE FOOT
THREEONE INCH = ONE FOOT
ONE HALF INCH = ONE FOOT
ONE QUARTER INCH = ONE FOOT
ONE EIGHT INCH = ONE FOOT