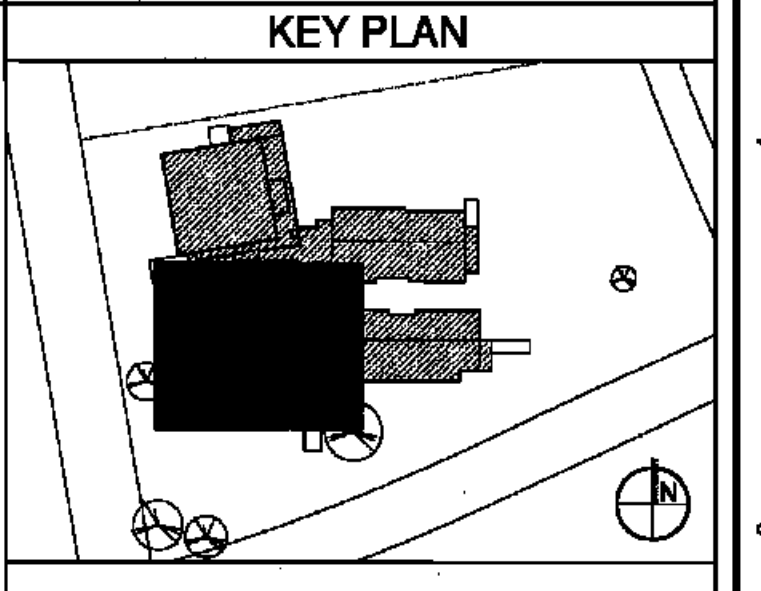


**RSD**  
LOUISIANA

**LEGEND**

- ROOF SCUPPER
- ROOF SLOPE INDICATOR
- BUILDING SECTION TAG
- ELEVATION TAG
- STANDING SEAM METAL ROOF
- TAPERED BITUMEN (200 F)
- TAPERED SLOPE INDICATORS
- BITUMEN ROOFING SYSTEM

- GENERAL NOTES**
1. THE ROOFING ASSEMBLY/SYSTEM DETAILS DEPICTED ON THIS PAGE ARE TYPICAL MANUFACTURER DETAILS.
  2. THESE TYPICAL DETAILS ARE INDICATIVE OF AND SIMILAR TO DETAILING CONDITIONS ENCOUNTERED ON THIS PROJECT AND ARE PRESENTED FOR REFERENCE AND COORDINATION PURPOSES ONLY.
  3. IT SHALL BE THE RESPONSIBILITY OF THE GENERAL CONTRACTOR TO COORDINATE & VERIFY THE PROPOSED ROOFING INSTALLATION METHOD WITH THE ROOFING CONTRACTOR PRIOR TO INSTALLATION.
  4. IN THE EVENT ACTUAL PROJECT CONDITIONS DIFFER FROM CONDITIONS DEPICTED IN TYPICAL DETAILS (WHETHER SHOWN IN CONTRACT DOCUMENTS OR NOT), THE GC IS TO NOTIFY THE ARCHITECT IMMEDIATELY.
  5. THE GC SHALL INSTALL ROOFING ASSEMBLY AS PER MANUFACTURER INSTRUCTIONS, AND AS REQUIRED FOR SECURE, WATERTIGHT CONDITION.
  6. GC SHALL INSTALL ROOFING ACCESSORY ITEMS IN ACCORDANCE WITH SMACNA TYPICAL DETAILS AND MANUFACTURER INSTRUCTIONS, AND AS REQUIRED FOR SECURE, WATERTIGHT CONDITION.
  7. GC SHALL INSTALL ROOFING SYSTEM/ASSEMBLY AS REQUIRED PER ALL APPLICABLE CODES.



BIDDING DOCUMENTS		05/04/10
NO. REVISION	DATE	
PARKVIEW SCHOOL 4617 MIRABEAU AVE. NEW ORLEANS, LA 70126		PROJECT
09009	JOB NO	

ENLARGED ROOF PLAN @ 40' AFF TITLE  
1/8" = 1'-0" SCALE  
MMM/AB / CW DRAWN/CHK

**A-3.9A**  
FULLY SPRINKLERED BUILDING

**RWA**  
ROZAS WARD ARCHITECTS  
A PROFESSIONAL CORPORATION www.rozasward.com  
1100 POYDRAS ST. SUITE 3550 NO LA 70183 504 524 4375

ENLARGED ROOF PLAN @ 40' AFF

ONE AND ONE HALF INCHES = ONE FOOT  
THREE EIGHT INCH = ONE FOOT  
ONE HALF INCH = ONE FOOT  
ONE QUARTER INCH = ONE FOOT  
ONE EIGHT INCH = ONE FOOT