

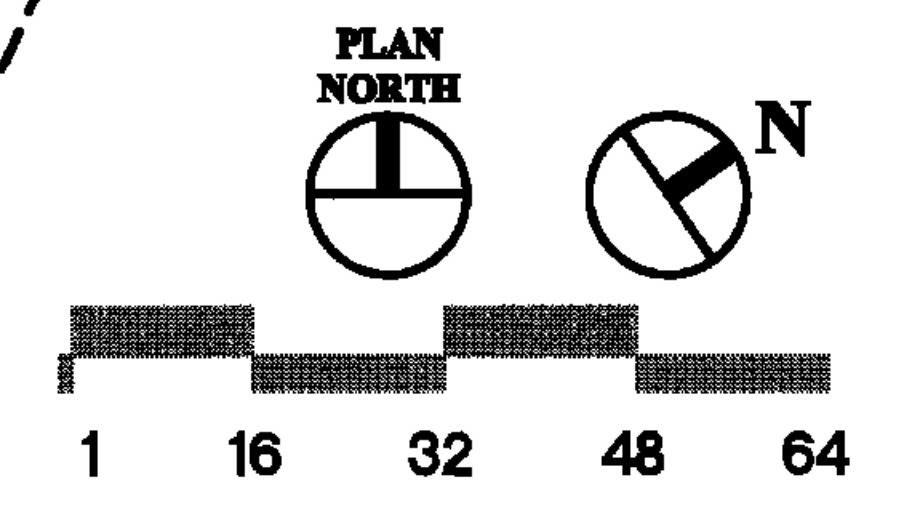
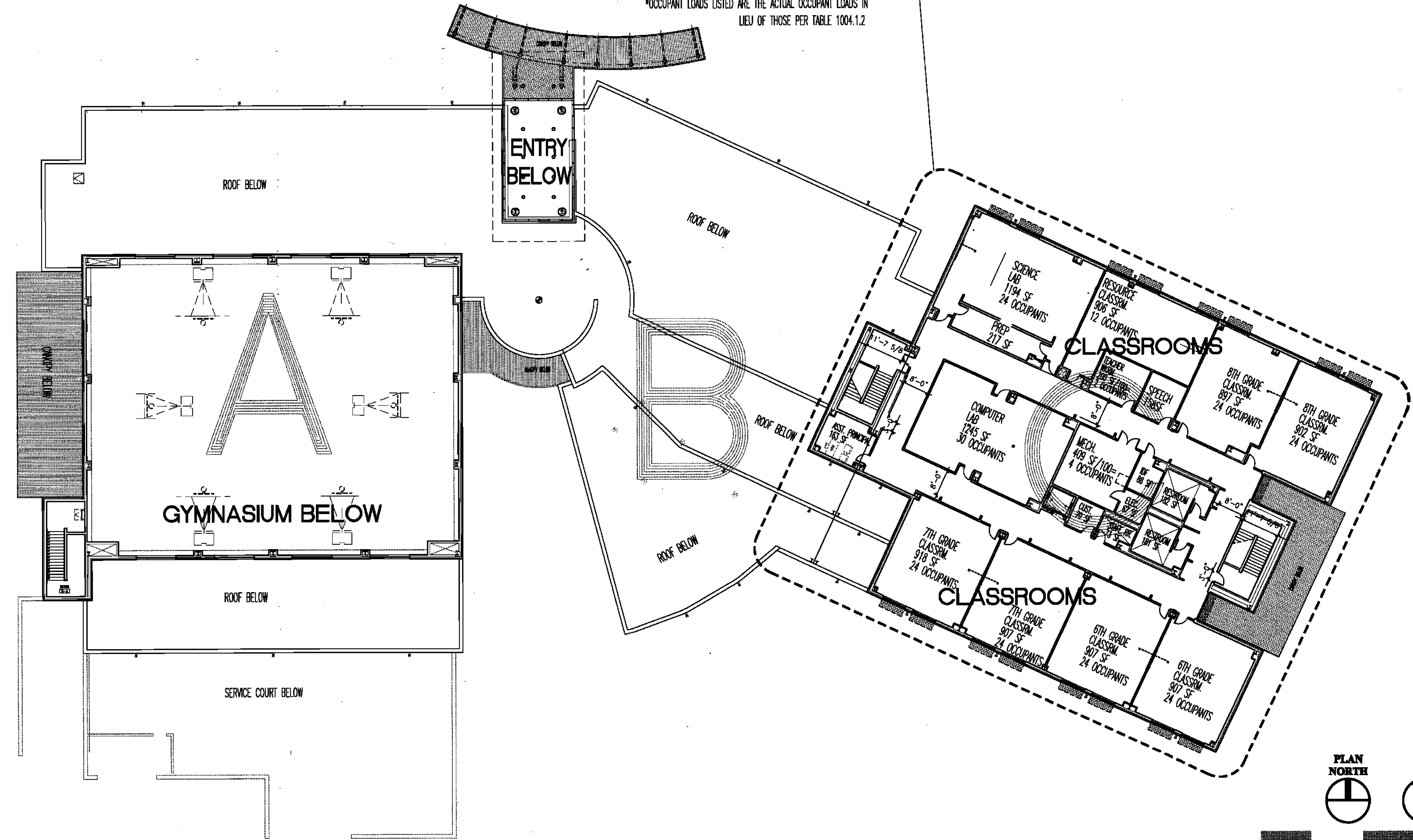
BYRON J. STEWART & ASSOC.
ARCHITECTS & PLANNERS, APC
2300 MARENGO STREET
NEW ORLEANS, LOUISIANA 70115
(504) 527-5337 (504) 527-5342 FAX



CARTER G. WOODSON SCHOOL
RECOVERY SCHOOL DISTRICT
2514 THIRD STREET
NEW ORLEANS, LOUISIANA

213 OCCUPANTS @ AREA C, 3RD FLOOR PER TABLE 1005.1, THERE SHALL BE 42.6" OF EGRESS WIDTH REQUIRED. PROVIDED EXIT WIDTH = 2 @ 36" = 72" CORRIDORS SHALL BE 72" MIN PER 1017.2, FOR GROUP "E". PROVIDED = 96"

*OCCUPANT LOADS LISTED ARE THE ACTUAL OCCUPANT LOADS IN LIEU OF THOSE PER TABLE 1004.1.2



FOR CONSTRUCTION

JOB NUMBER: BJS 12b
DATE: 04/20/10
DRAWN BY:
CHECKED BY:

REVISIONS		
NO.	DATE	REVISION

SHEET TITLE:
THIRD FLOOR-EGRESS-PLAN

SHEET:
G-3