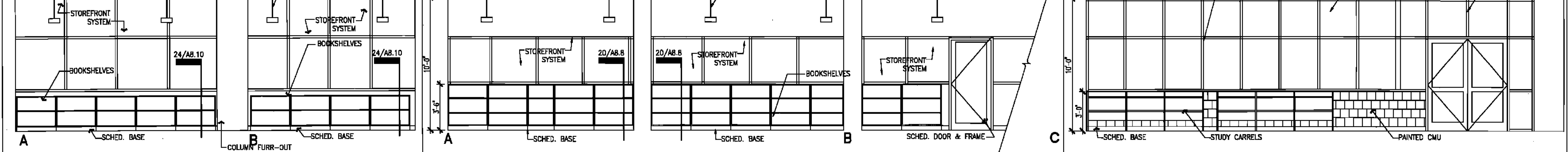


30 LIBRARY_WORKROOM_B133 1/4" = 1'-0"

27 LIBRARY_OFFICE_B134 1/4" = 1'-0"

25 TEACHER_REF_B132 1/4" = 1'-0"

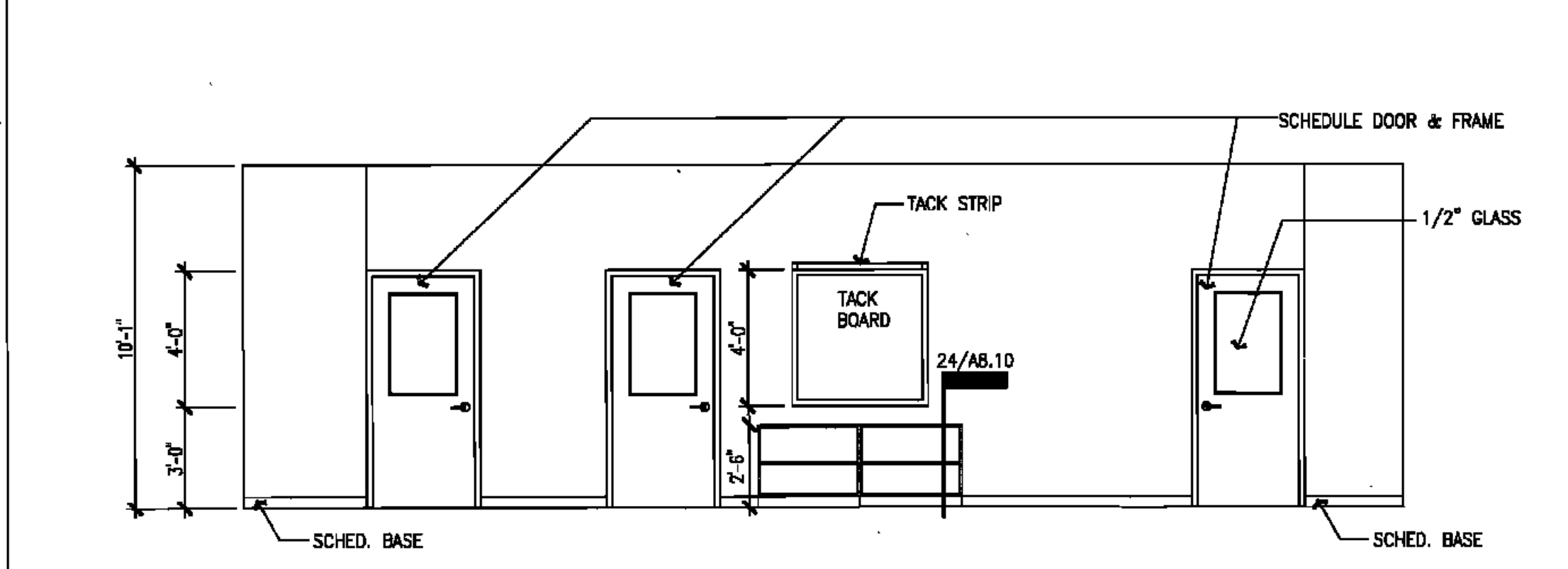
• REFERENCE NUMBERS ARE CABINETS MANUFACTURED BY LSI CORPORATION
 • RE: MEP DRAWINGS FOR ALL DATA/POWER OUTLET LOCATIONS
 • CASEWORK MATERIAL TO BE WOOD
 • PROVIDE SCHED. BASE AT ALL BASE CABINETS WHERE REQUIRED



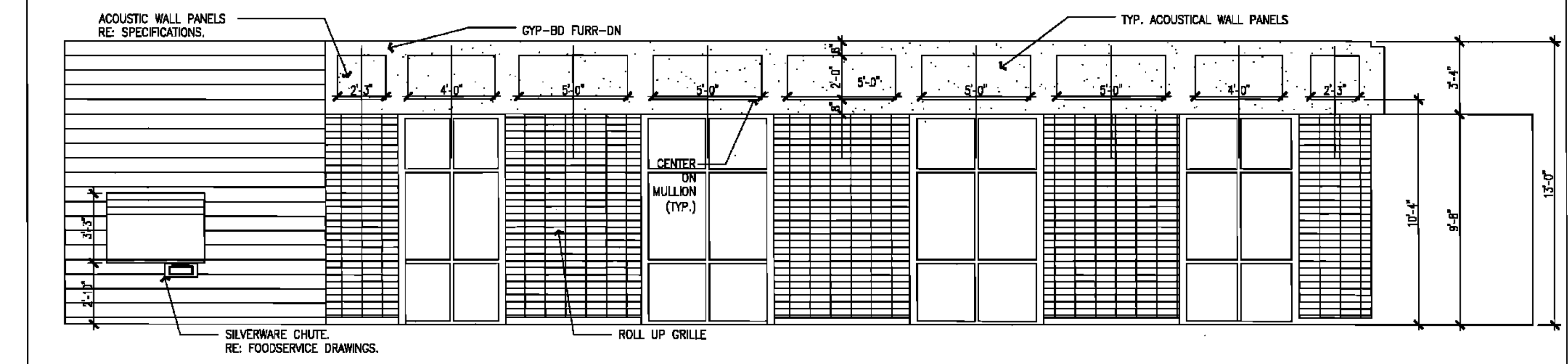
24 CIRCULATION_READING 1/4" = 1'-0"

22 CIRCULATION_READING 1/4" = 1'-0"

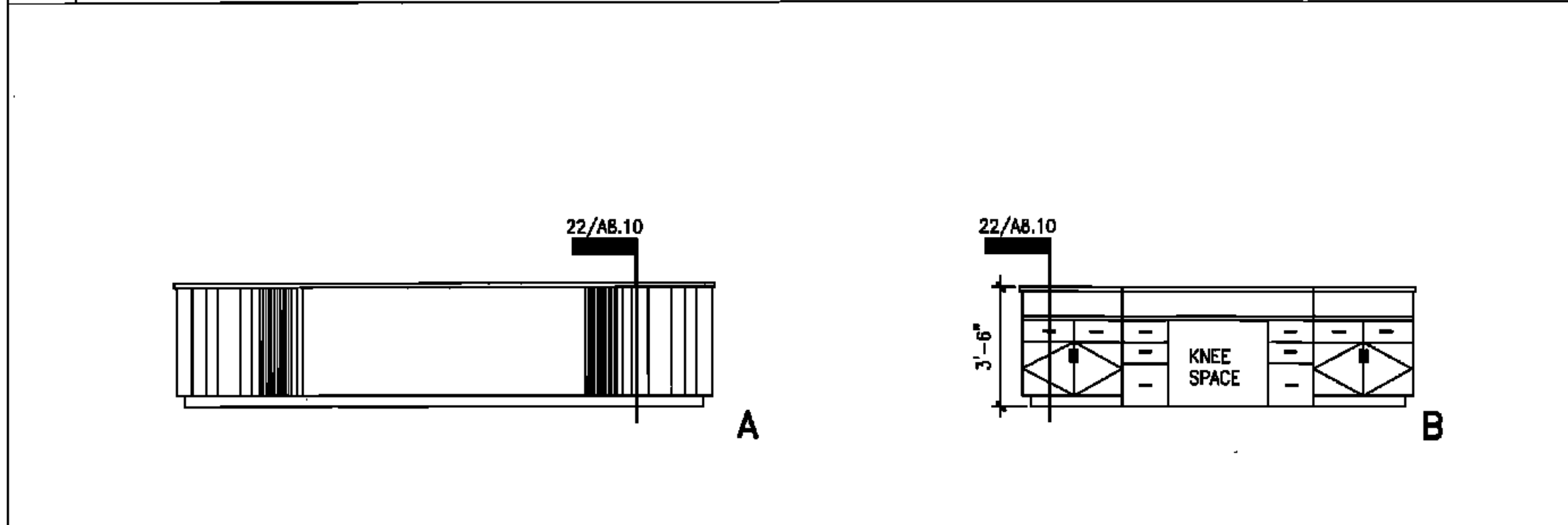
20 CIRCULATION_READING 1/4" = 1'-0"



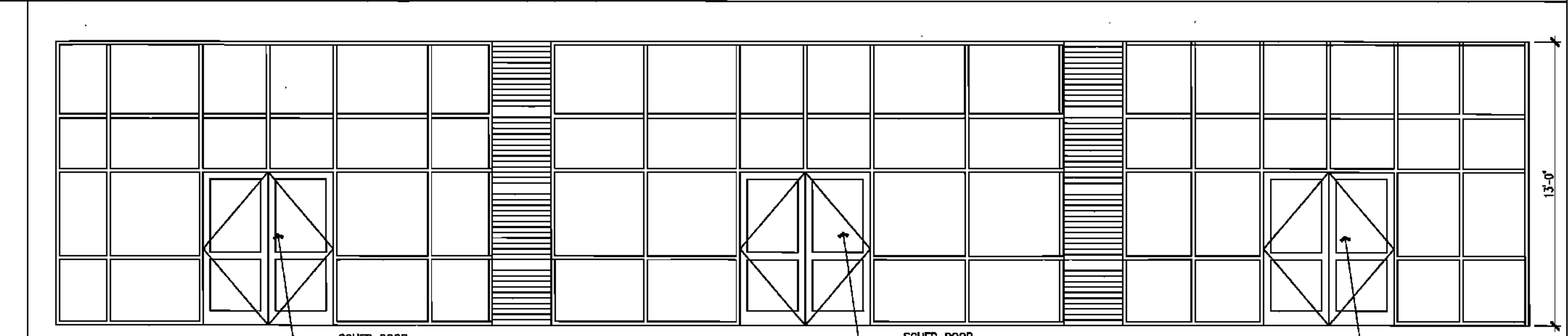
18 CIRCULATION_ROOM_B130 1/4" = 1'-0"



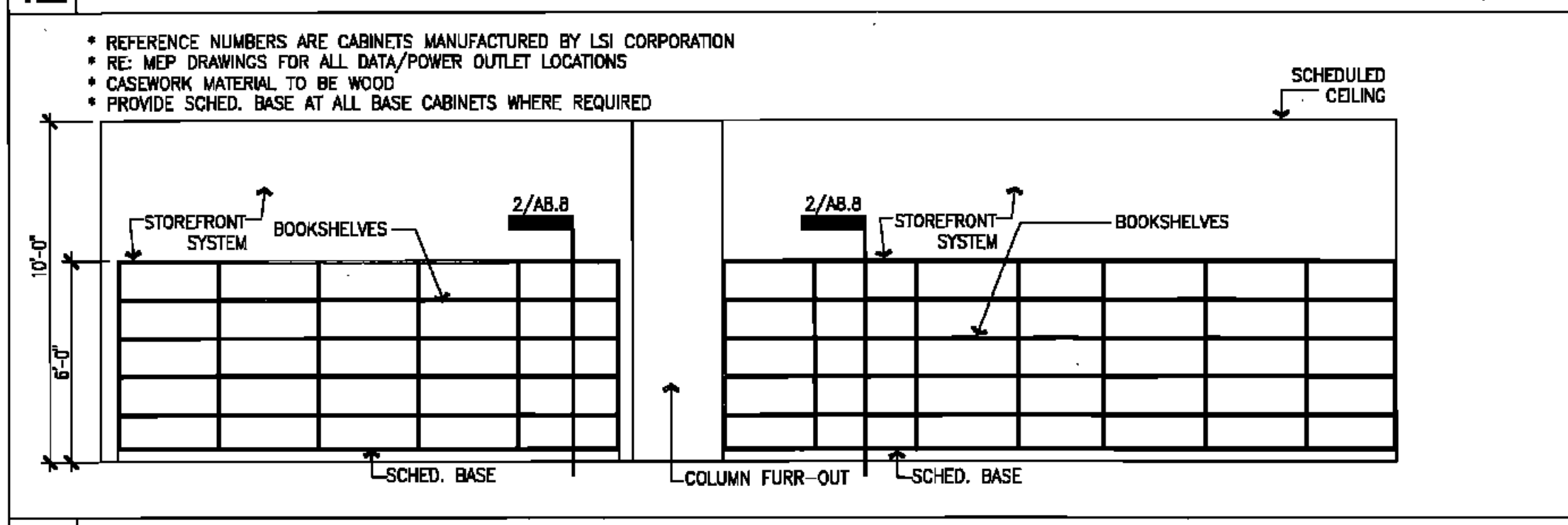
16 CAFETERIA 1/4" = 1'-0"



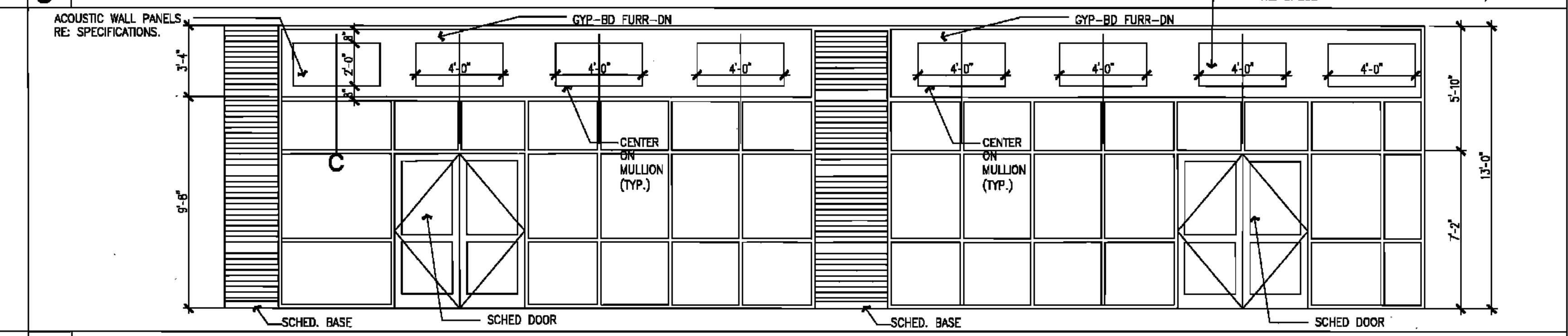
12 CIRCULATION_DESK_B130 1/4" = 1'-0"



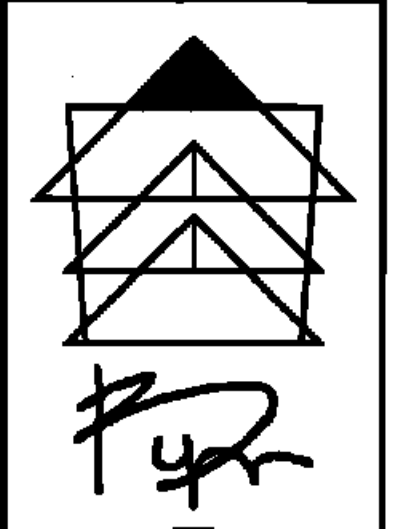
9 CAFETERIA 1/4" = 1'-0"



6 CIRCULATION_READING_ROOM_B130 1/4" = 1'-0"



3 CAFETERIA 1/4" = 1'-0"



BYRON J. STEWART & ASSOC.
 ARCHITECTS & PLANNERS, APC
 2300 MARENGO STREET
 NEW ORLEANS, LOUISIANA, 70115
 (504) 827-8339 (504) 827-8342 FAX

PBK
 Architecture
 Engineering
 Planning
 Facility Consulting

CARTER G. WOODSON SCHOOL
 RECOVERY SCHOOL DISTRICT
 2514 THIRD STREET
 NEW ORLEANS, LOUISIANA

FOR CONSTRUCTION

JOB NUMBER: **B13 125**
 DATE: **4/28/10**
 DRAWN BY: **M.HAP**
 CHECKED BY: **L.RPB**

NO.	DATE	REVISION

SHEET TITLE:
INTERIOR ELEVATIONS

SHEET:

A8.2