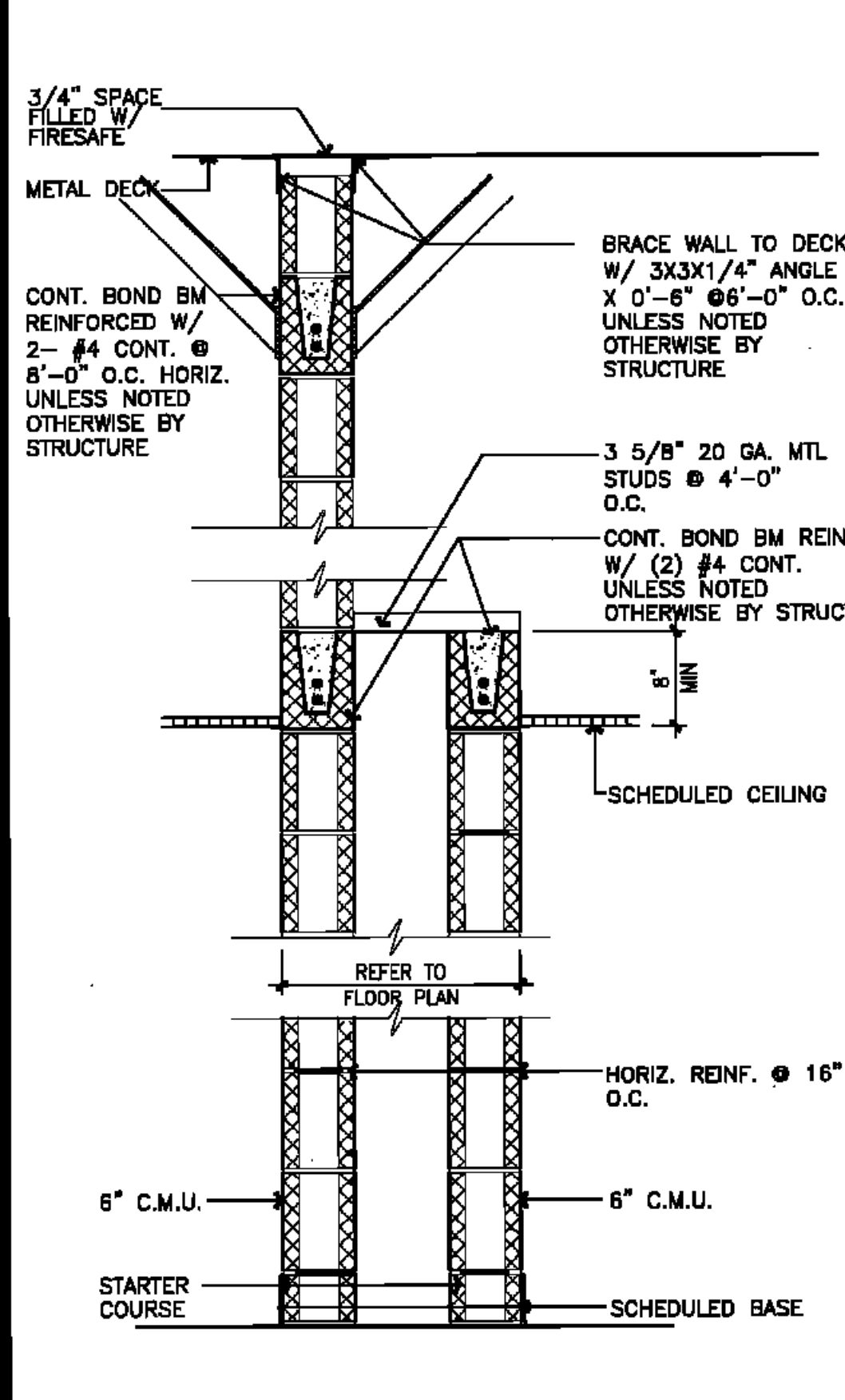


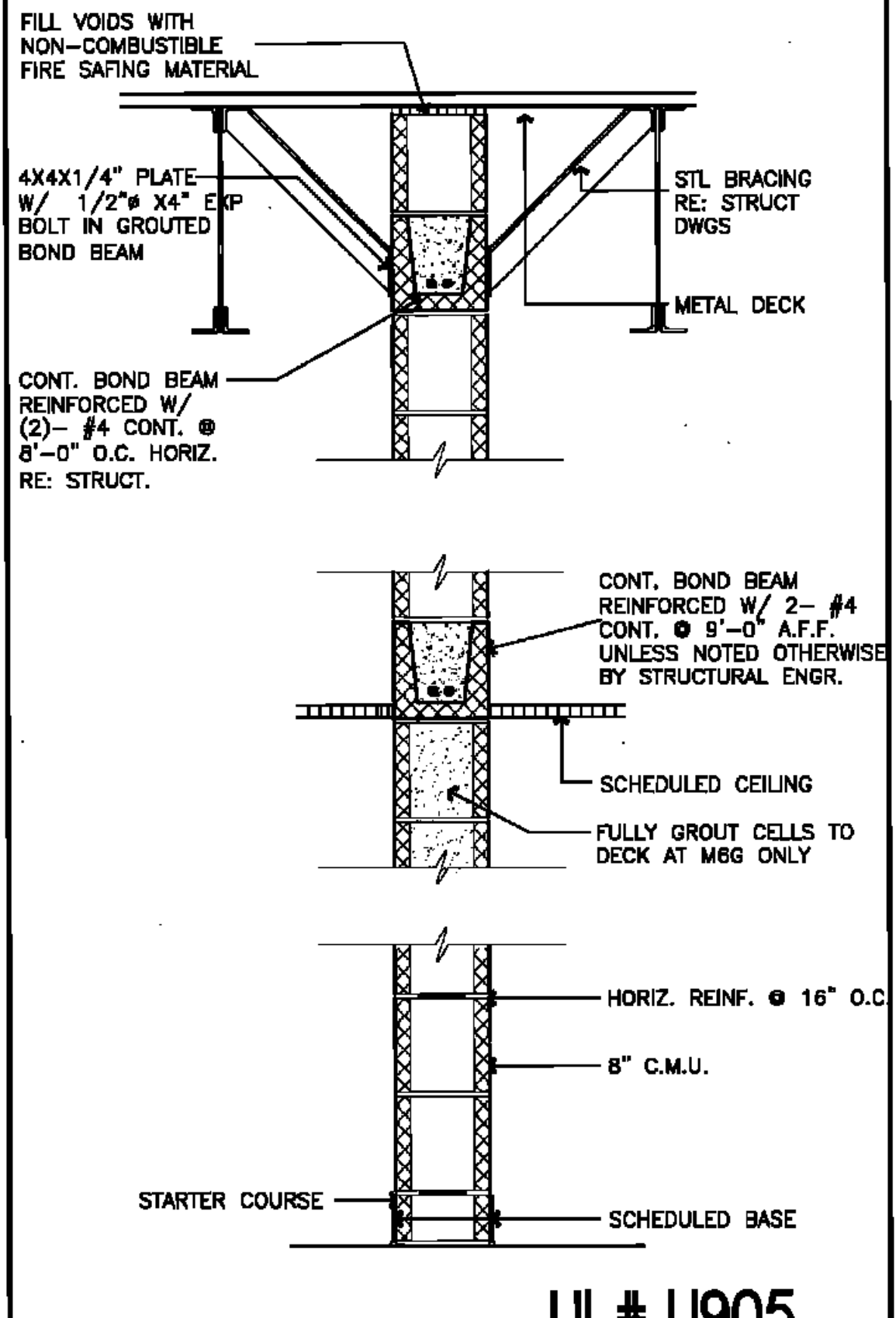
TYPE	FIRE RAT'G	DESCRIPTION
M7	NONE	8" C.M.U. - TO DECK & 6" C.M.U.

7 PARTITION TYPE "M7"



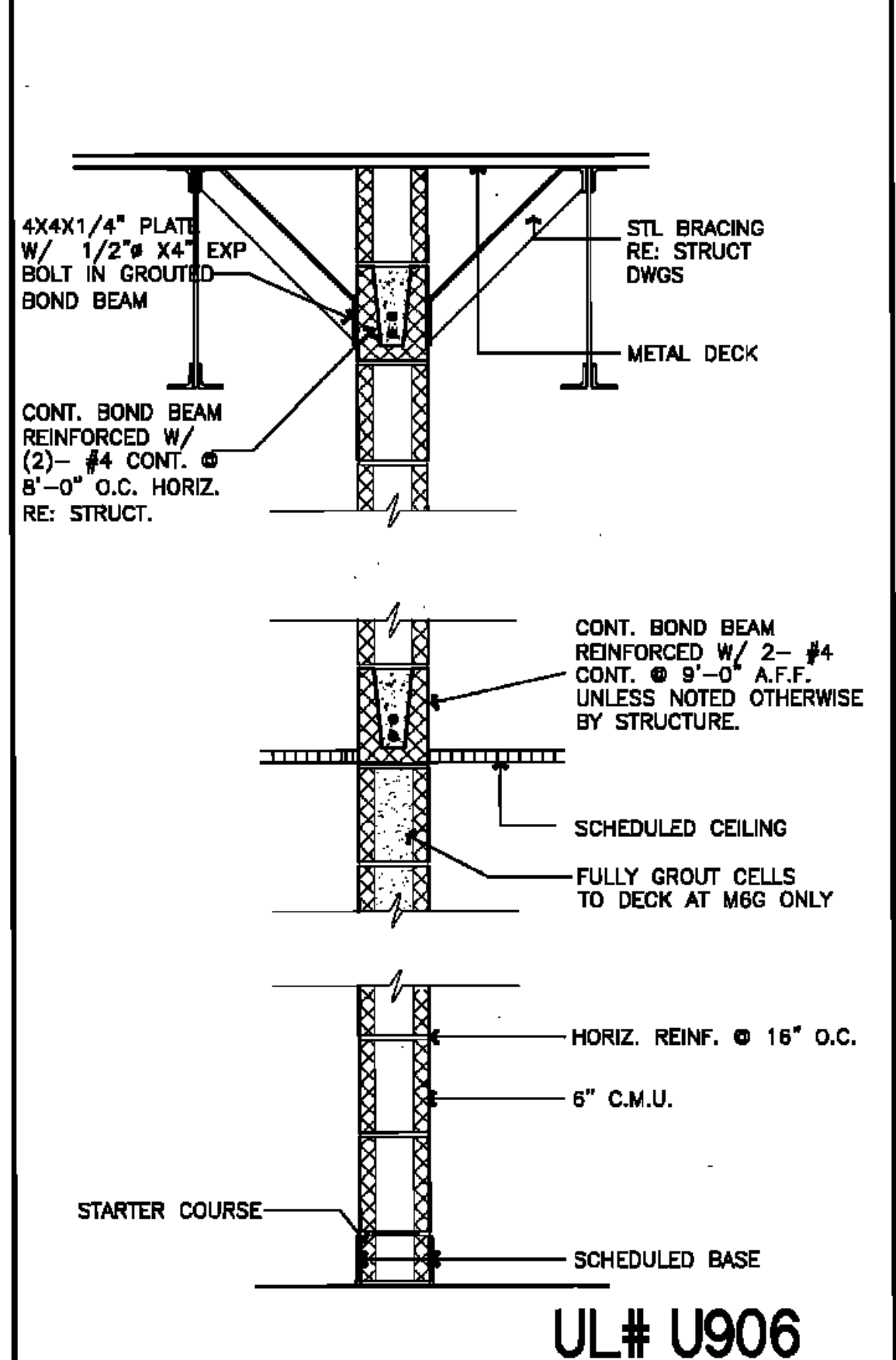
TYPE	FIRE RAT'G	DESCRIPTION
M3	NONE	DOUBLE WYTHE - 6" CMU AND 6" CMU

3 PARTITION TYPE "M3"



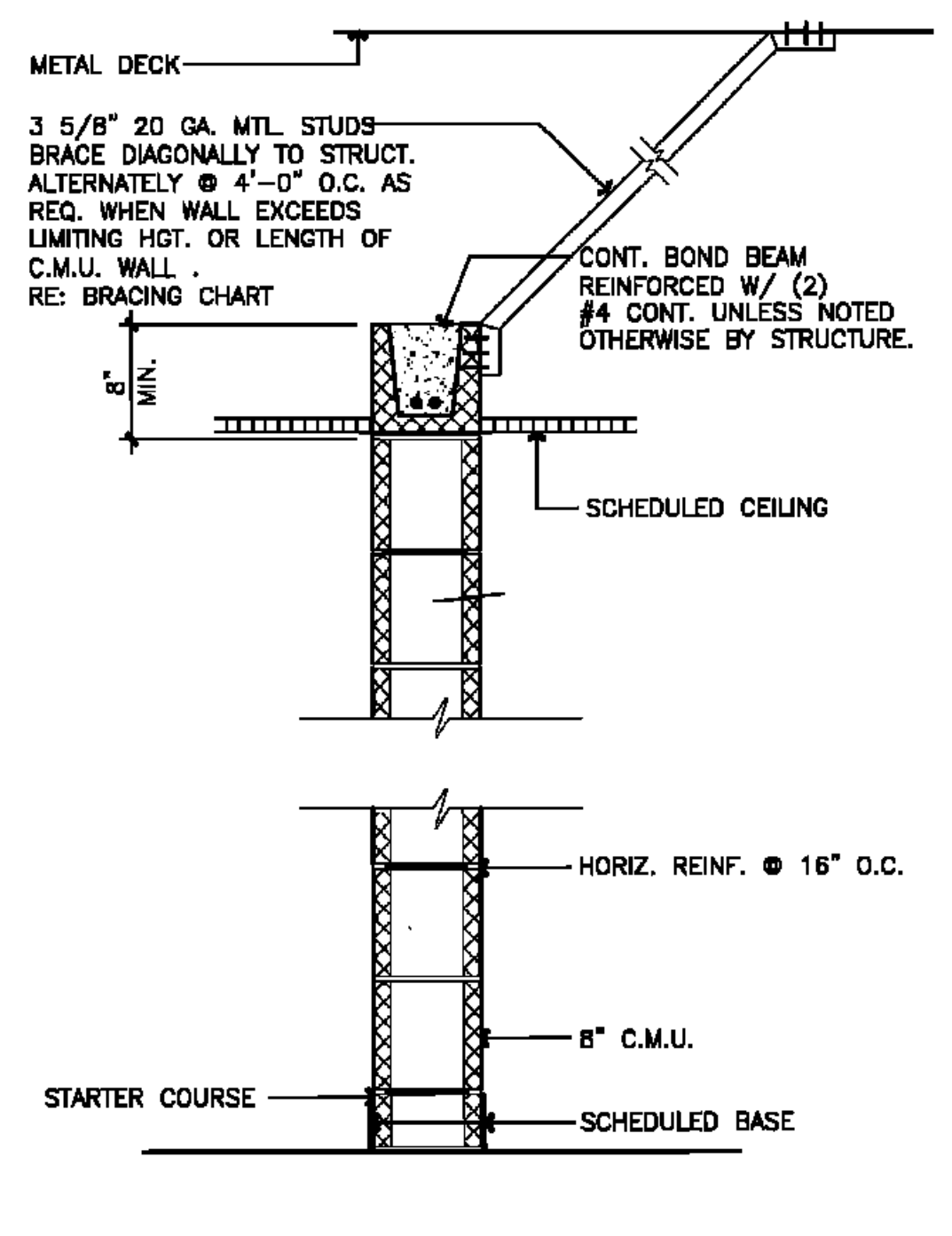
TYPE	FIRE RAT'G	DESCRIPTION
M6	NONE	8" CMU TO DECK
M6A	ONE HOUR	8" CMU TO DECK
M6B	ONE HOUR	GROUT FILLED 8" CMU TO DECK

6 PARTITION TYPE "M6"



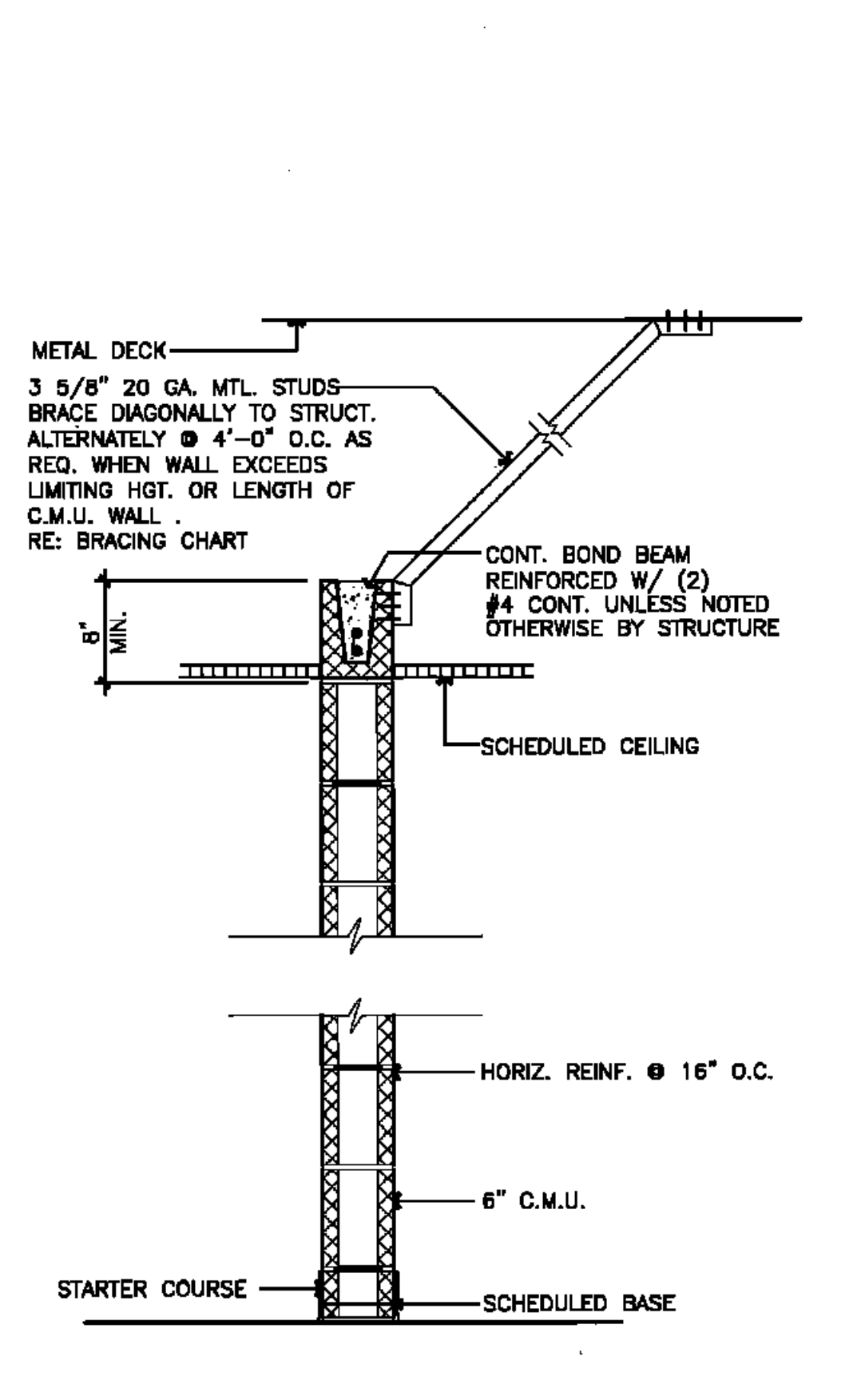
TYPE	FIRE RAT'G	DESCRIPTION
M2	NONE	6" CMU TO DECK
M2A	ONE HOUR	6" CMU TO DECK
M2B	ONE HOUR	GROUT FILLED 6" CMU TO DECK

2 PARTITION TYPE "M2"



TYPE	FIRE RAT'G	DESCRIPTION
M5	NONE	8" CMU
M5A	ONE HOUR	8" CMU WITH FIRE RATED CEILING

5 PARTITION TYPE "M5"



TYPE	FIRE RAT'G	DESCRIPTION
M1	NONE	6" CMU
M1A	ONE HOUR	6" CMU

1 PARTITION TYPE "M1"

BRACING NOTES:

- AT WALLS THAT TERMINATE ABOVE CEILING, CONTRACTOR MAY CONTINUE METAL STUD FRAMED WALLS TO UNDERSIDE OF METAL DECK AND OMIT DIAGONAL BRACING IF HEIGHT DOES NOT EXCEED LIMITING HEIGHT OF METAL STUD AS INDICATED ON CHART BELOW.
- PROVIDE INTERMEDIATE BRACING AT ALL PARTITIONS THAT EXCEED LIMITING HEIGHT OF METAL STUDS AS INDICATED ON CHART BELOW.
- ALL BRACING SHALL BE AT STUD POINTS.

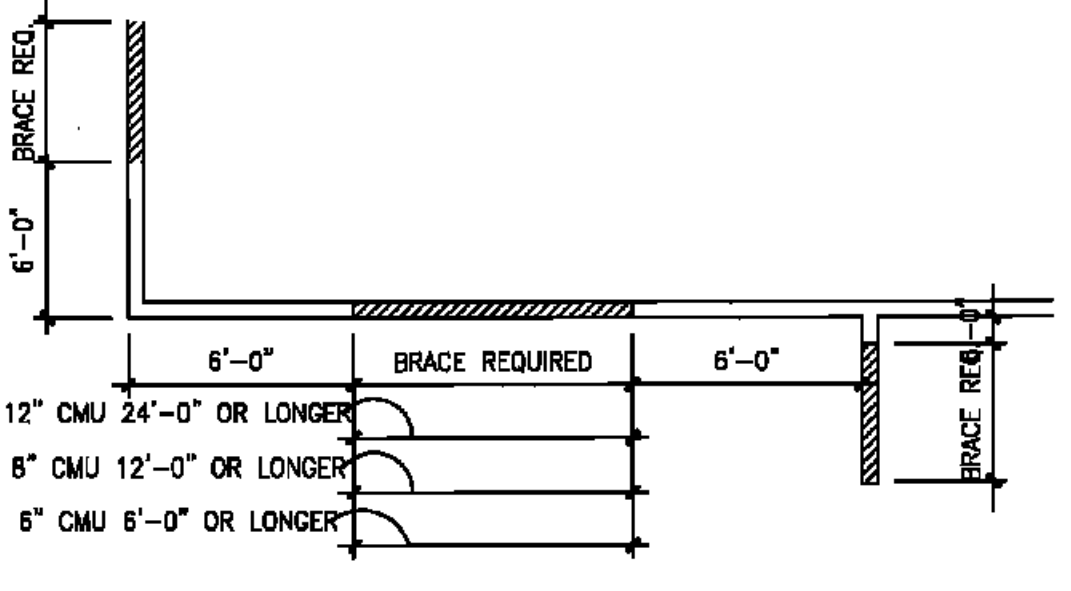
TERMINATION NOTES:

- AT ALL RATED PARTITIONS, FILL VOIDS IN METAL DECK AT TOP OF PARTITIONS WITH FIRESAFING.

CMU PARTITION NOTES:

- LOCATE CONTROL JOINTS IN CMU PARTITIONS AS FOLLOWS: (UNLESS NOTED OTHERWISE BY STRUCTURAL ENGINEER)
 - PARTITIONS EXCEEDING 25'-0".
 - WHERE A PARTITION ABUTS A STRUCTURAL ELEMENT OR DISSIMILAR WALL.
 - AT EXPANSION JOINTS
 - REFER TO DETAILS FOR ADDITIONAL LOCATIONS
- REFER TO WALL SECTIONS FOR THE USE OF STARTER COURSES AT THE BASE OF INTERIOR PARTITIONS.
- PROVIDE CMU LINTELS FOR ALL OPENINGS IN INTERIOR CMU PARTITIONS. COORDINATE WITH STRUCTURAL.
- PROVIDE A 3/4" SPACE BETWEEN TOP OF CMU AND STRUCTURE/DECK FOR POTENTIAL DEFLECTION. SEAL WITH APPROPRIATE CAULK.

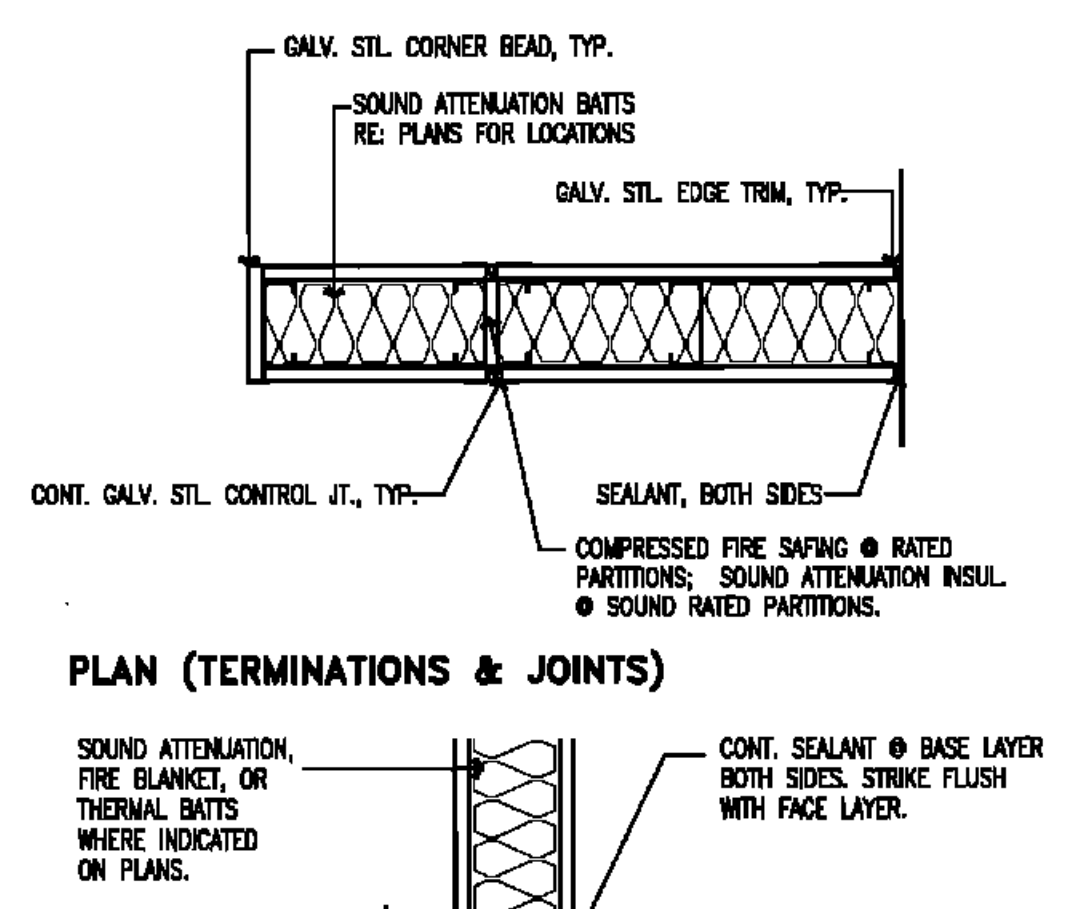
GENERAL NOTES N.T.S.



INTERIOR LOCATIONS ONLY

- NON-LOAD BEARING WALL BRACES. BRACING AT THE TOP OF MASONRY WALLS IS REQUIRED ON STRAIGHT RUNS OF WALL MORE THAN SIX FEET FROM A CORNER OR INTERSECTING WALL.

TYP. CMU WALL BRACING



BASE

TYPICAL DETAILS

GYPSUM WALLBOARD PARTITION NOTES:

- ALL METAL STUDS PARTITIONS ARE 25 GAUGE METAL STUDS AT 16" O.C. UNLESS OTHERWISE NOTED. IF THE LIMITING HEIGHT FOR A PARTITION TYPE IS EXCEEDED, INCREASE SIZE AND/OR GAUGE OF METAL STUDS AS INDICATED ON "LIMITING HEIGHT OF METAL STUDS" TABLE. NOTIFY THE ARCHITECT PRIOR TO INSTALLATION.
- WHEN CERAMIC TILE IS APPLIED TO GYP. BOARD PARTITIONS, PROVIDE 20 GAUGE METAL STUDS INSTEAD OF 25 GAUGE.
- SET ALL FLOOR TRACKS ON A CONTINUOUS RIBBON OF SEALANT.
- AT PARTITIONS DESIGNATED TO HAVE SOUND ATTENUATION BLANKETS:
 - PROVIDE 3-1/2" OR 6" THICK SOUND ATTENUATION BLANKETS OR BATTS FOR FULL HEIGHT OF PARTITION, UNLESS NOTED OTHERWISE.
 - FILL ALL DECK VOIDS WITH SOUND ATTENUATION MATERIAL.
 - SEAL PARTITION PERIMETER AND ALL PENETRATIONS WITH ACOUSTICAL SEALANT.
 - TAPE & BED OR CAULK ALL JOINTS BETWEEN 1ST AND 2ND LAYERS OF SHEET ROCK AND AT ALL SOUND RATED WALLS TAKEN THROUGH THE CEILING.
 - PROVIDE CONTINUOUS ACOUSTICAL SEALANT AT BOTTOM OF PARTITION ON BOTH SIDES AT NON-RATED PARTITIONS AND PROVIDE CONTINUOUS FIRE RATED SEALANT AT FIRE-RATED PARTITIONS.
- DAMP LOCATIONS AT GYP. BOARD PARTITIONS:
 - PROVIDE TILE BACKER BOARD ON WALLS BEHIND AND ADJACENT TO PLUMBING FIXTURES, AND BEHIND ALL CERAMIC TILE.
- RIGIDLY BRACE ALL DOOR JAMBS, AT THE HINGE & STRIKE SIDES.
- LOCATE CONTROL JOINTS IN GYP. BOARD PARTITIONS AS FOLLOWS:
 - PARTITIONS OR FURRING RUNS EXCEEDING 30'-0"
 - WHERE A PARTITION ABUTS A STRUCTURAL ELEMENT OR DISSIMILAR WALL.
 - CONSTRUCTION CHANGES WITHIN PLANE OF PARTITION.
 - AT EXPANSION OR CONTROL JOINTS THAT OCCUR THROUGHOUT THE BUILDING ITSELF.
 - AT BOTH JAMBS OF INTERIOR AND EXTERIOR DOOR AND WINDOW FRAMES.
- FIRE RATED PARTITIONS
 - PROVIDE TYPE "X" FIRE RESISTIVE GYPSUM BOARD, 5/8" THICK UNLESS NOTED OTHERWISE.
 - FILL ALL VOIDS AT DECK WITH FOAM FIRESTOP SEALANT.
 - SEAL PARTITION PERIMETER AND ALL PENETRATIONS WITH RATED SEALANT.
 - REFER TO UL RATED PARTITION DESCRIPTIONS FOR DETAILED CONSTRUCTION NOTES.
- PROVIDE DEFLECTION TRACK AT STUD CONNECTION AT BOTTOM OF DECK AND FILL VOIDS AS REQ.

GENERAL NOTES N.T.S.

LIMITING HEIGHT OF METAL STUDS

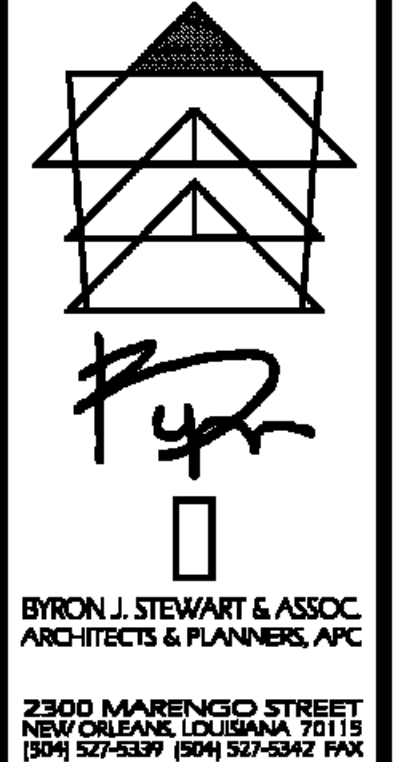
STUD SIZE	SPACING	25 GA.	20 GA.
2-1/2"	16"	11'-3"	12'-10"
3-5/8"	16"	14'-4"	16'-5"
6"	16"	19'-9"	24'-6"

NOTE: THE TABLE INDICATED ABOVE IS BASED ON "DIETRICH" LIMITING HEIGHT CHART AND IS TO BE USED AS A GUIDE FOR INTERIOR WALL CONSTRUCTION. TABLE IS BASED WITH SHEATHING BOARD ON BOTH SIDES.

HOW TO USE THIS SHEET:

- NOT EVERY PARTITION TYPE SHOWN IS NECESSARILY INTENDED FOR THE USE ON THIS PROJECT. REFER TO FLOOR PLANS FOR REFERENCE MARKS INDICATING APPLICABLE PARTITION TYPES.
- REFER TO BRACING DETAILS FOR SUPPORT OF THE TOP OF EACH PARTITION TYPE AND BRACING OF PARTITIONS THAT EXCEED LIMITING HEIGHT OF PARTITION TYPES.

GENERAL NOTES N.T.S.



BYRON J. STEWART & ASSOC.
ARCHITECTS & PLANNERS, APC
2300 MARININGO STREET
NEW ORLEANS, LOUISIANA 70115
(504) 527-5337 (504) 527-5342 FAX

**CARTER G. WOODSON SCHOOL
RECOVERY SCHOOL DISTRICT**
2514 THIRD STREET
NEW ORLEANS, LOUISIANA

FOR CONSTRUCTION

JOB NUMBER: BJS 12B
DATE: 04/20/10
DRAWN BY:
CHECKED BY:

REVISIONS

NO.	DATE	REVISION

SHEET TITLE: **TYPICAL PARTITION TYPES**
SHEET: