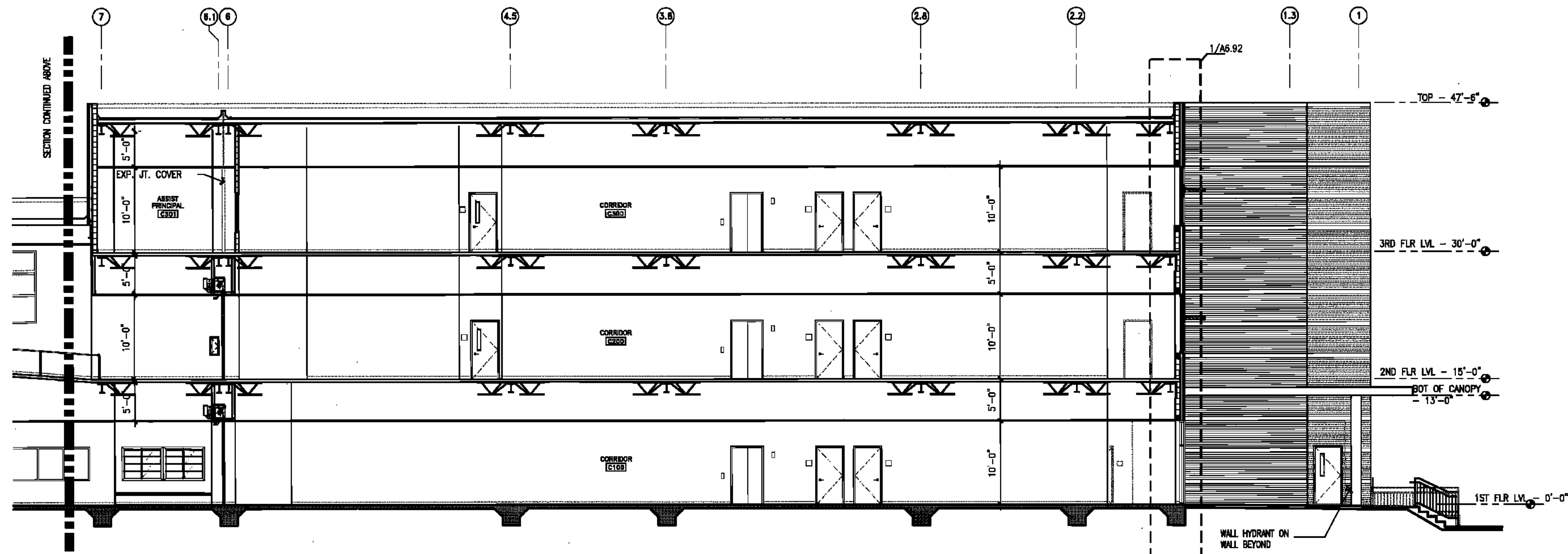


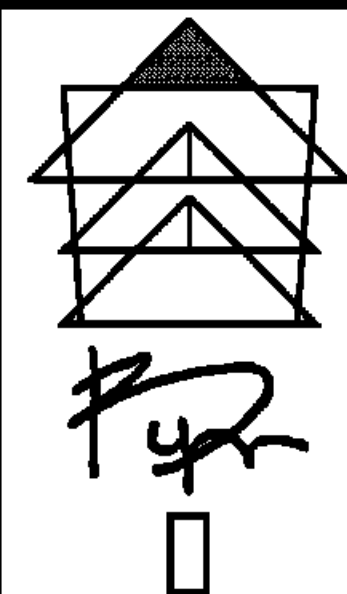
15 BUILDING SECTION - CLASSROOM WING, ADMINISTRATION AND COMMONS LOOKING NORTH (CONT.)

1/8" = 1'-0"



6 BUILDING SECTION - CLASSROOM WING, ADMINISTRATION AND COMMONS LOOKING NORTH

1/8" = 1'-0"



BYRON J. STEWART & ASSOC.
ARCHITECTS & PLANNERS, APC
2300 MARENGO STREET
NEW ORLEANS, LOUISIANA 70115
(504) 527-5337 (504) 527-5342 FAX



CARTER G. WOODSON SCHOOL
RECOVERY SCHOOL DISTRICT
2514 THIRD STREET
NEW ORLEANS, LOUISIANA

FOR CONSTRUCTION

JOB NUMBER: BLS 128
DATE: 04/20/10
DRAWN BY:
CHECKED BY:

REVISIONS		
NO.	DATE	REVISION

SHEET TITLE:
BUILDING SECTIONS

SHEET:

A-6.5