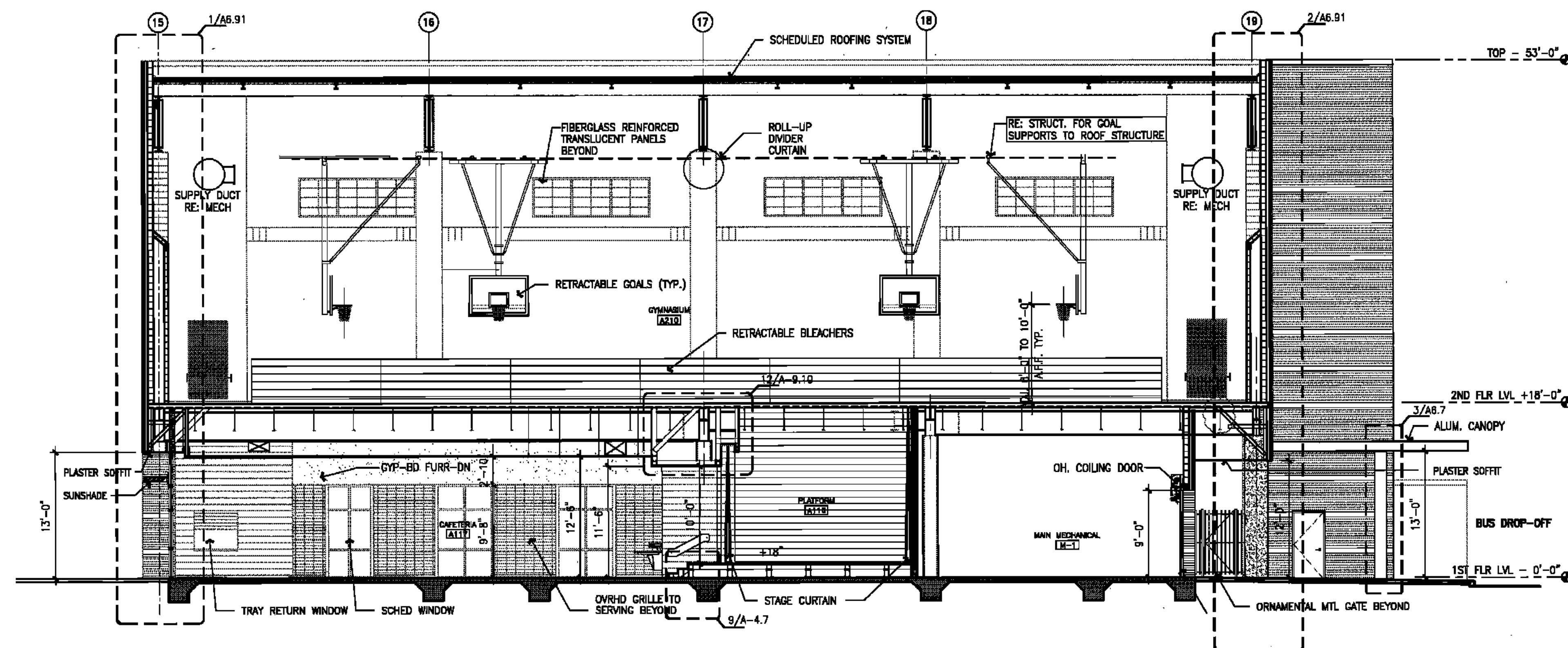


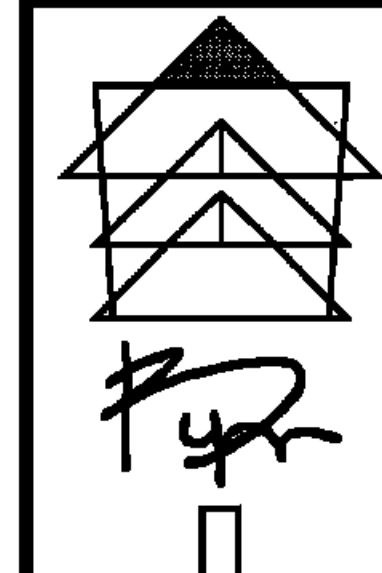
15 BUILDING SECTION - GYMNASIUM/CAFETERIA WING LOOKING NORTH

1/8" = 1'-0"



16 BUILDING SECTION - GYMNASIUM/CAFETERIA WING LOOKING SOUTH

1/8" = 1'-0"



BYRON J. STEWART & ASSOC.  
ARCHITECTS & PLANNERS, APC

2300 MARENGO STREET  
NEW ORLEANS, LOUISIANA 70115  
(504) 527-5337 (504) 527-5342 FAX



CARTER G. WOODSON SCHOOL  
RECOVERY SCHOOL DISTRICT  
2514 THIRD STREET  
NEW ORLEANS, LOUISIANA

FOR CONSTRUCTION

JOB NUMBER: BLS 128  
DATE: 04/20/10  
DRAWN BY:  
CHECKED BY:

REVISIONS		
NO.	DATE	REVISION

SHEET TITLE:

BUILDING SECTIONS

SHEET:

A-6.3

65 OF 223 SHEETS