

BYRON J. STEWART & ASSOC.
ARCHITECTS & PLANNERS, APC
2300 MARENGO STREET
NEW ORLEANS, LOUISIANA 70115
(504) 527-5275 FAX (504) 527-5275

PK
Architecture
Engineering
Planning
Facility Consulting

CARTER G. WOODSON SCHOOL
RECOVERY SCHOOL DISTRICT
2514 THIRD STREET
NEW ORLEANS, LOUISIANA

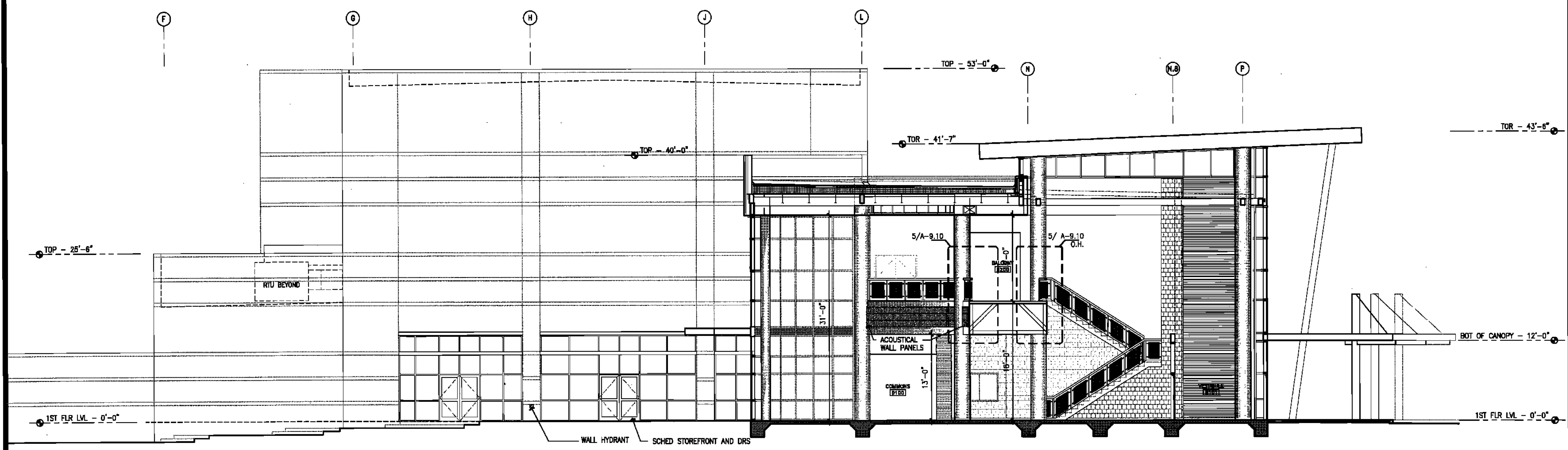
FOR CONSTRUCTION
JOB NUMBER: BJS 126
DATE: 04/20/10
DRAWN BY:
CHECKED BY:

REVISIONS		
NO.	DATE	REVISION

SHEET TITLE:
BUILDING SECTIONS

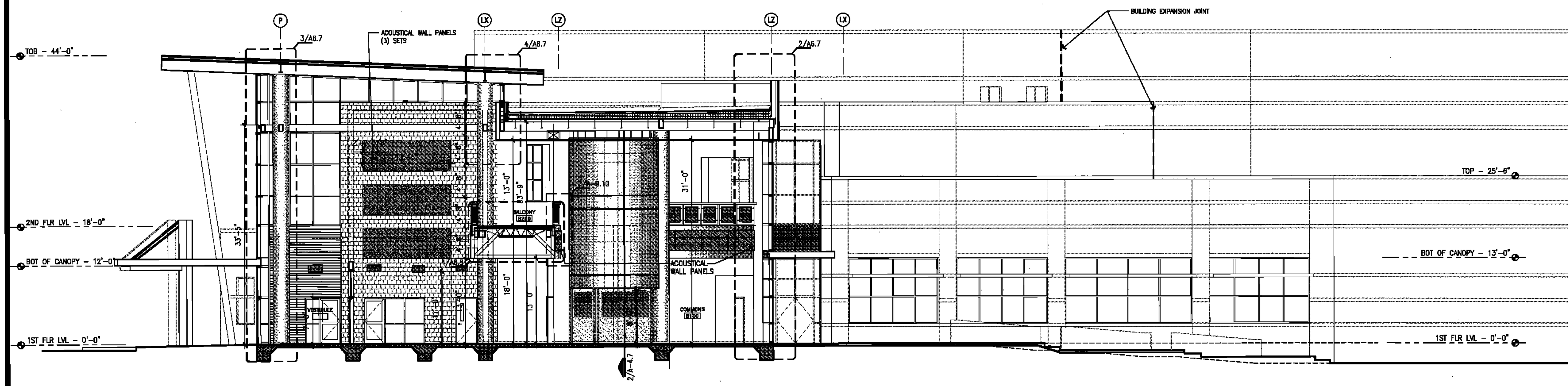
A-6.1

63 of 222 sheets



15 BUILDING SECTION THROUGH MAIN ENTRY AND COMMONS LOOKING WEST

1/8" = 1'-0"



6 BUILDING SECTION THROUGH MAIN ENTRY AND COMMONS LOOKING EAST

1/8" = 1'-0"