

BYRON J. STEWART & ASSOC.
ARCHITECTS & PLANNERS, APC
2300 MARENGO STREET
NEW ORLEANS, LOUISIANA 70113
(504) 527-8389 (504) 527-8342 FAX



CARTER G. WOODSON SCHOOL
RECOVERY SCHOOL DISTRICT
2514 THIRD STREET
NEW ORLEANS, LOUISIANA

FOR CONSTRUCTION

JOB NUMBER: SJS 12b
DATE: 04/20/10
DRAWN BY:
CHECKED BY:

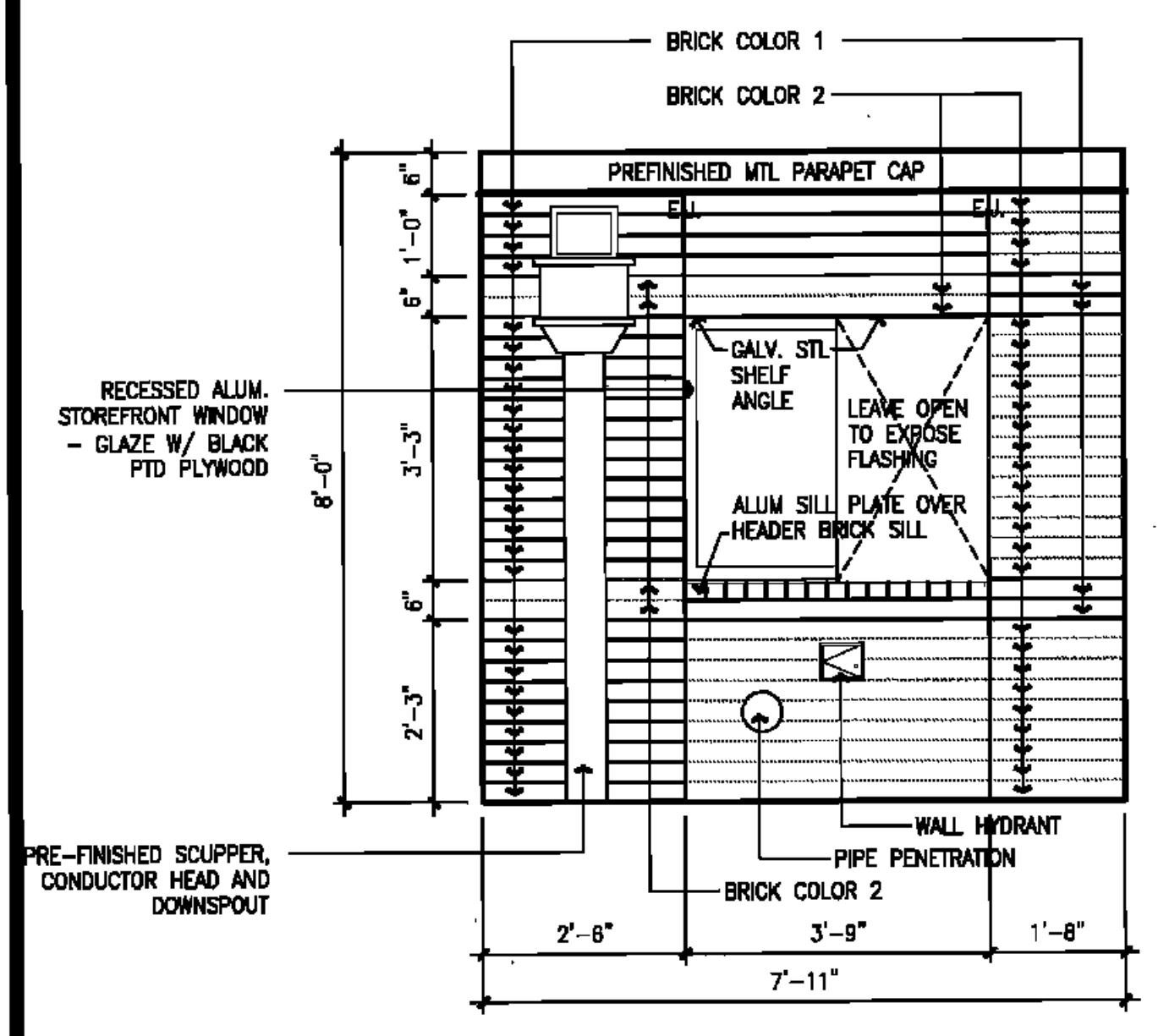
REVISIONS		
NO.	DATE	REVISION

SHEET TITLE:
BUILDING ELEVATIONS

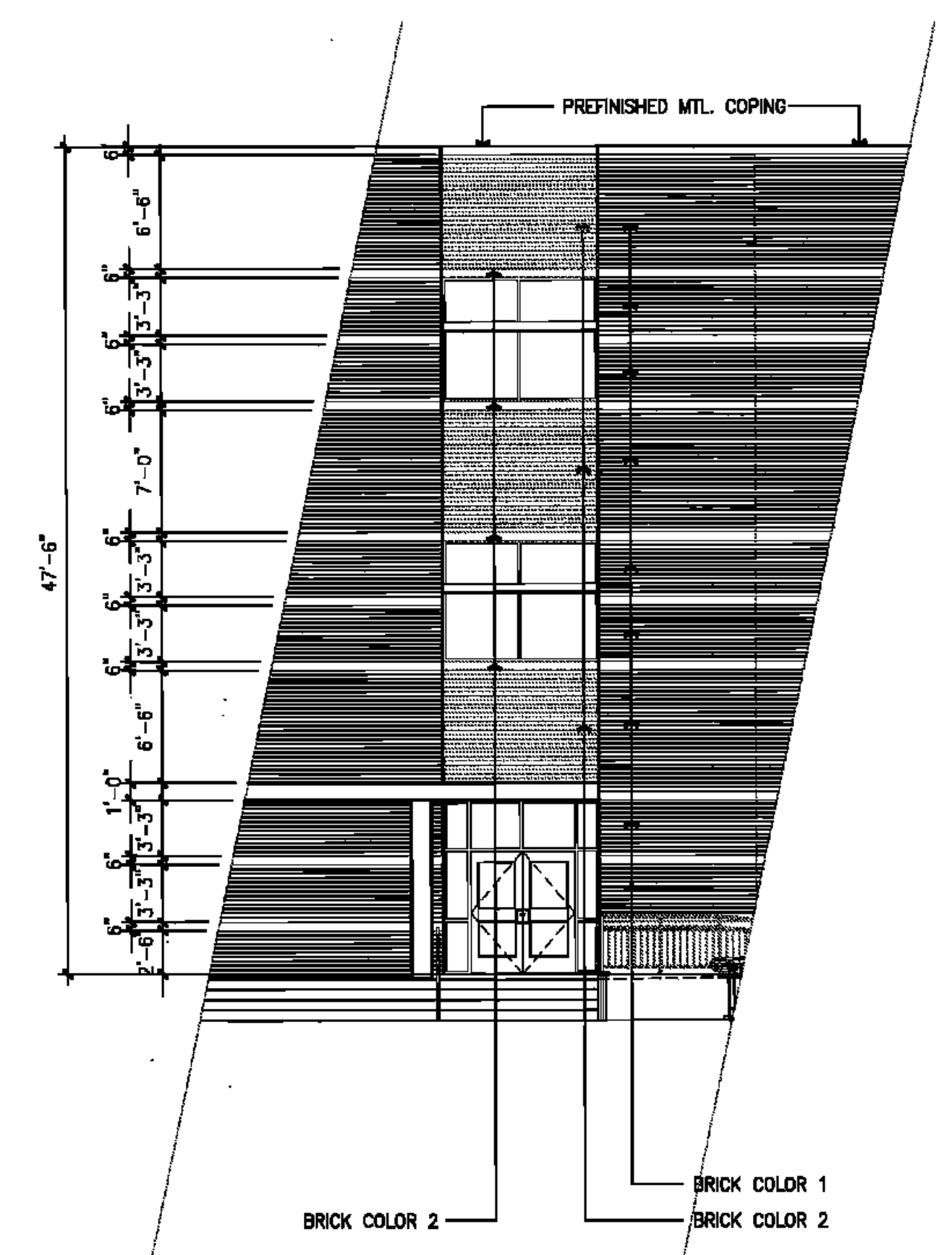
SHEET:

A-5.4

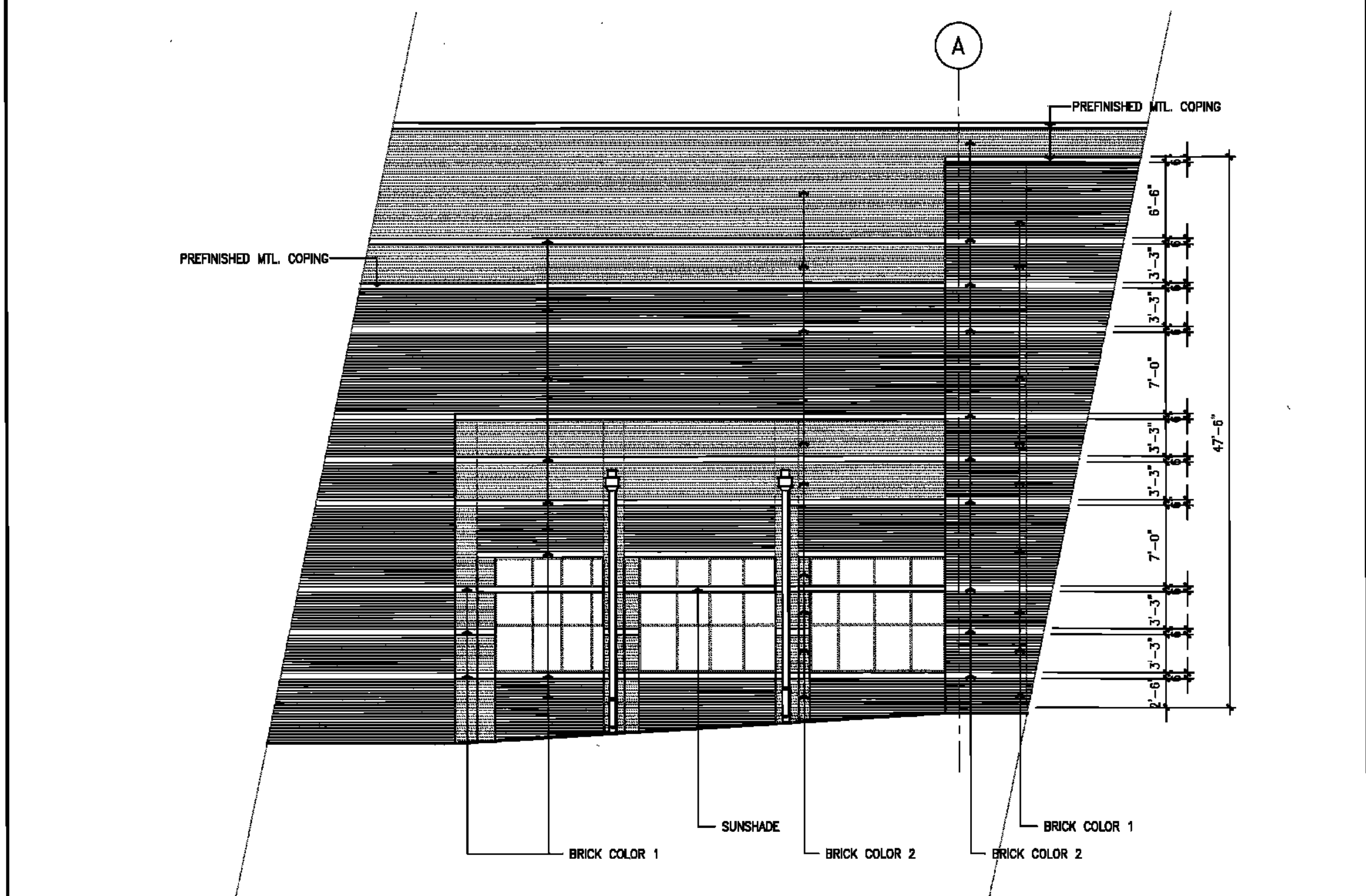
81 of 223 sheets



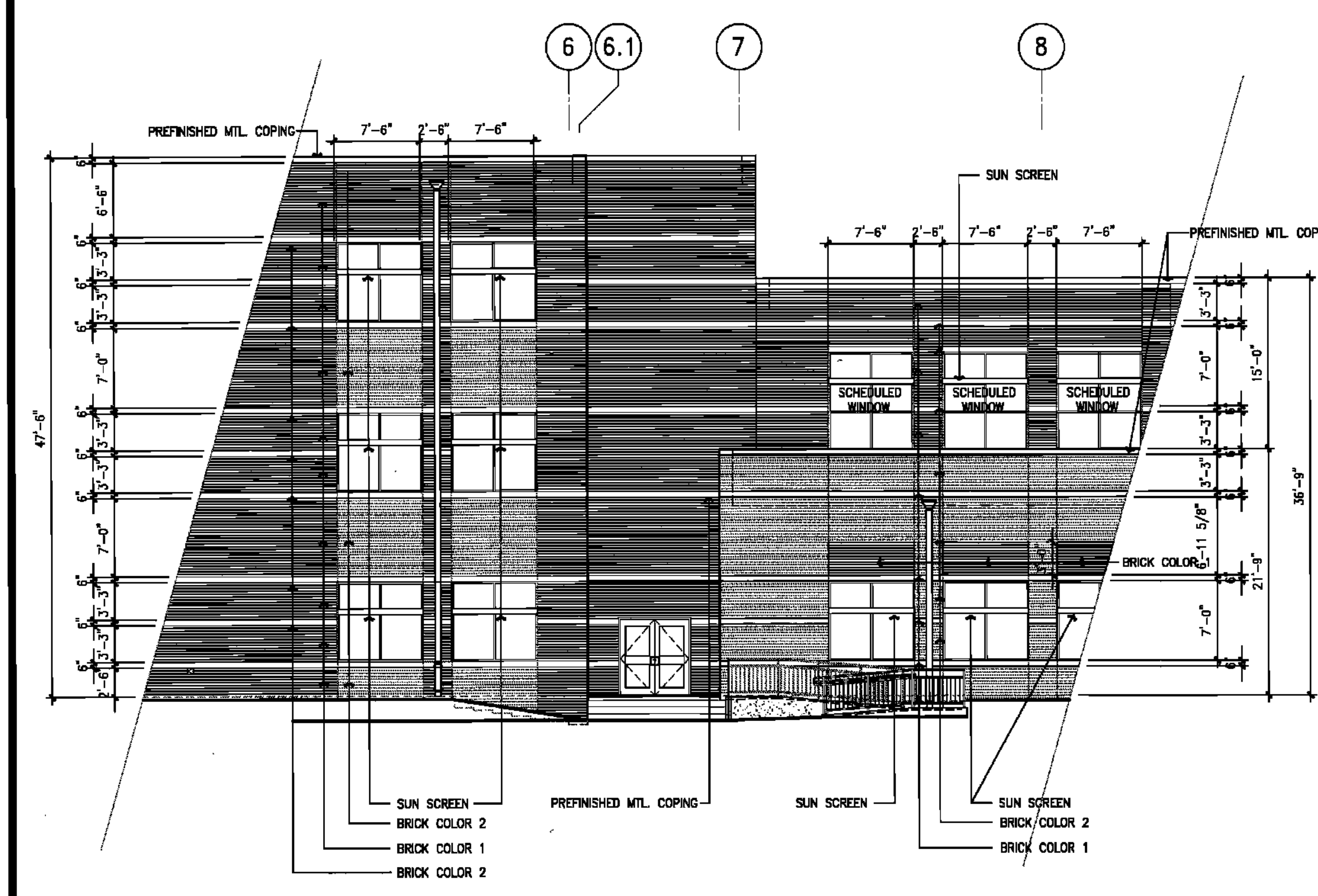
18 MASONRY MOCK-UP PANEL 1/2" = 1'-0"



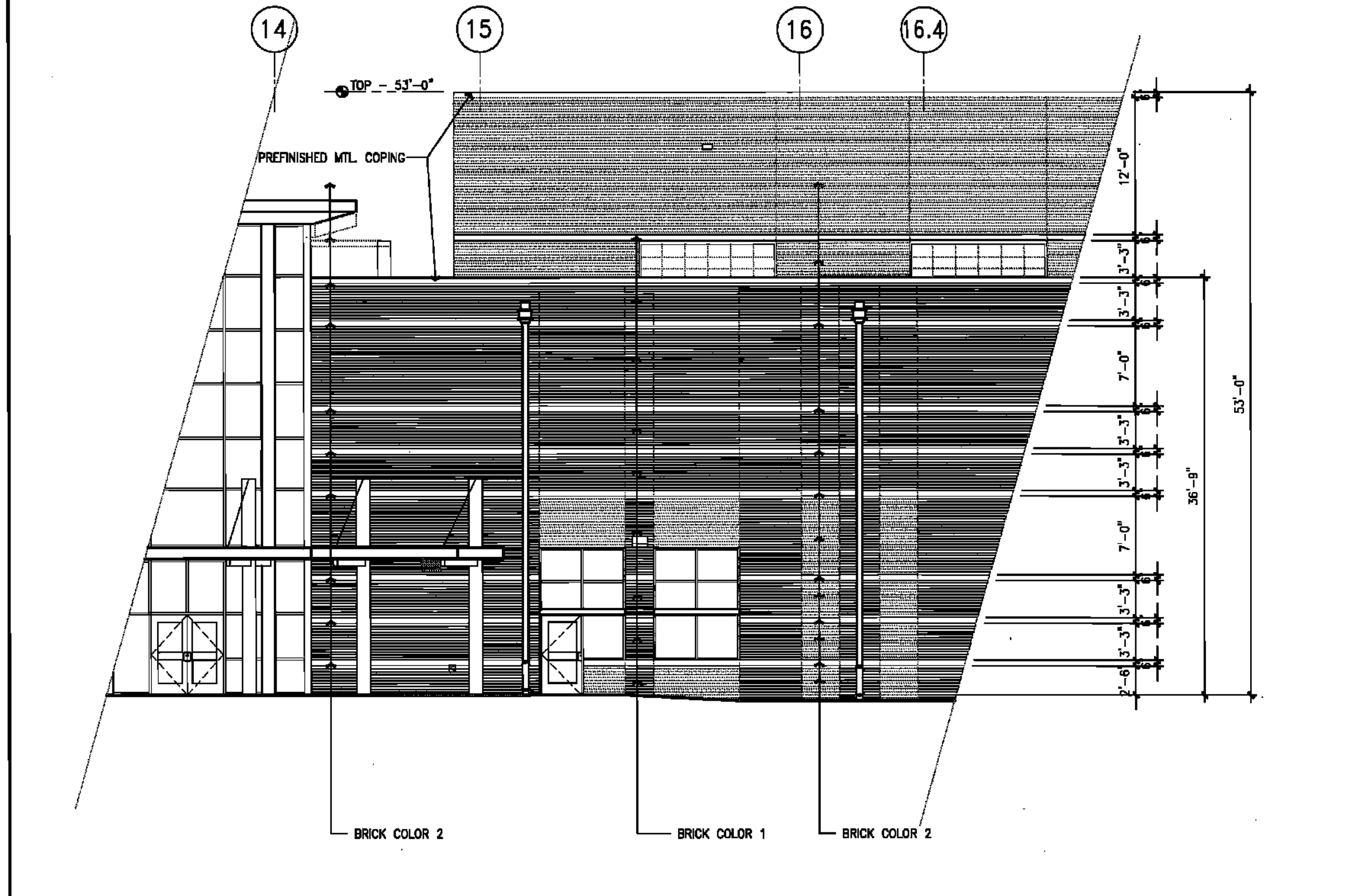
17 ENLARGED BUILDING ELEVATION 1/4" = 1'-0"



16 ENLARGED BUILDING ELEVATION 1/4" = 1'-0"



6 ENLARGED BUILDING ELEVATION - SOUTH ROBERTSON STREET SIDE 1/4" = 1'-0"



3 ENLARGED BUILDING ELEVATION - FERRET STREET SIDE 1/4" = 1'-0"