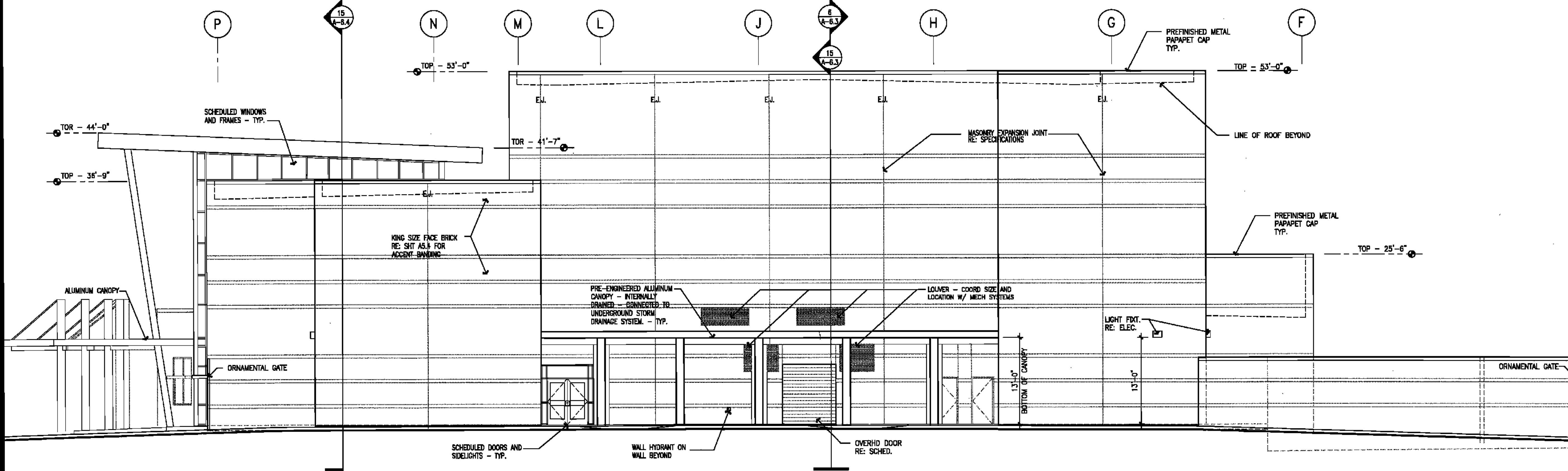


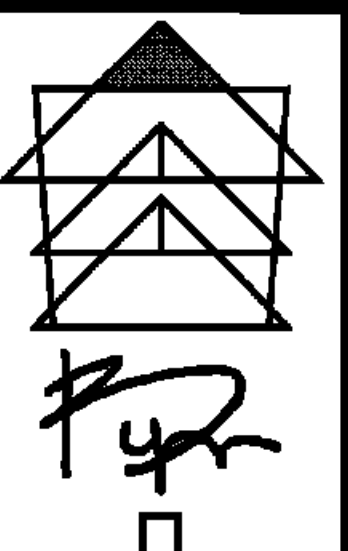
15 BUILDING ELEVATION - SOUTH ROBERTSON SIDE - AREA A

1/8" = 1'-0"



6 BUILDING ELEVATION - WASHINGTON AVENUE SIDE - AREA A

1/8" = 1'-0"



BYRON J. STEWART & ASSOC.
ARCHITECTS & PLANNERS, APC
2300 MARENGO STREET
NEW ORLEANS, LOUISIANA 70115
(504) 527-5397 (504) 527-5347 FAX



CARTER G. WOODSON SCHOOL
RECOVERY SCHOOL DISTRICT
2514 THIRD STREET
NEW ORLEANS, LOUISIANA

FOR CONSTRUCTION

JOB NUMBER: BJS 12B
DATE: 04/20/10
DRAWN BY:
CHECKED BY:

REVISIONS		
NO.	DATE	REVISION

SHEET TITLE:
BUILDING ELEVATIONS

A-5.0