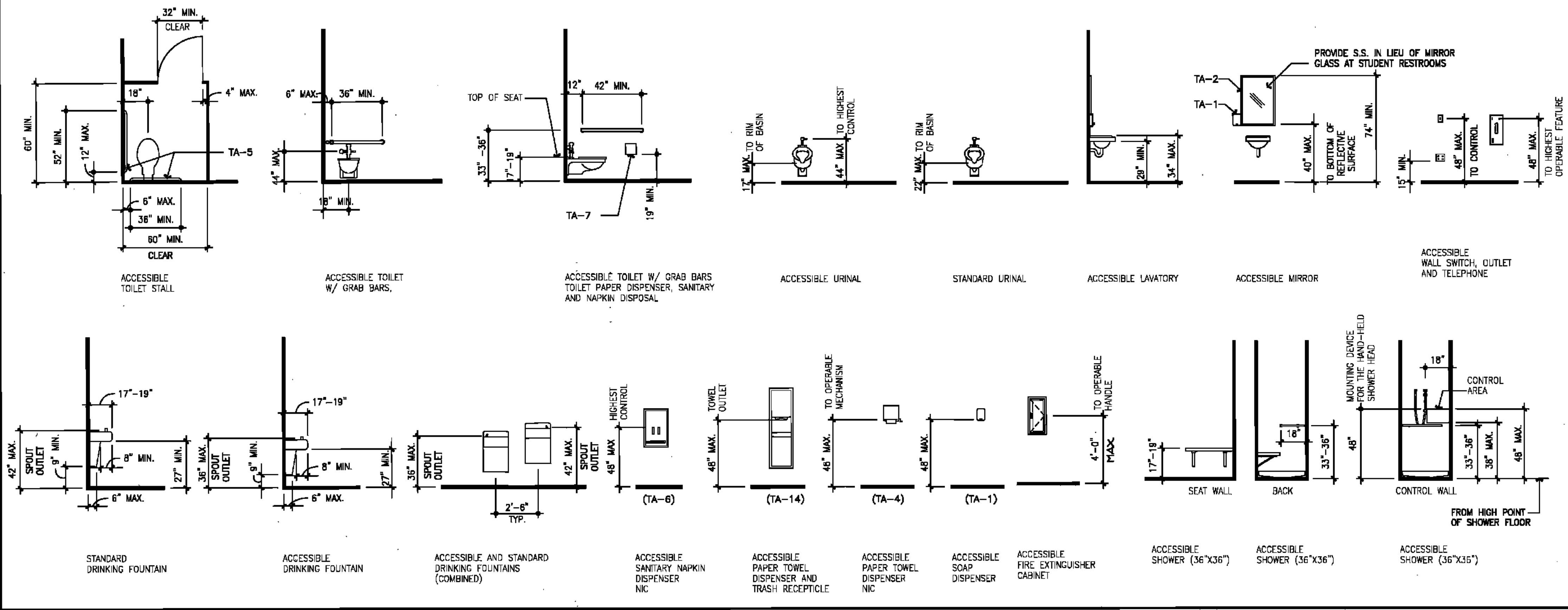


DESCRIPTION	LOUISIANA
	Ages: 4-10, Pre-K thru 5
WATER CLOSET: To Top of Seat	14"-15"
Grab Bars:	28"-30"
URINAL: Max. to Rim of Basin	14"
Max. to Flush Controls	42"
LAVATORIES:	
Frontal Approach:	
Min. Knee Clearance	28"
Max. To Top	30"
Max. To Faucets from Front of Lav.	18"
FIXED OR BUILT-IN:	
Height of Tables or Counter:	28"-30"
Knee Clearance: Max.	28"
Shelves & Dispensers: Max. Height to Control Device	
Frontal Approach: Max.	42"
Side Approach: Max.	48"
DRINKING FOUNTAINS:	
Max. to Spout	32"
Knee Clearance: Min.	28"
SWITCHES AND CONTROLS	
Frontal Approach - Max.	42"
Side Approach - Max.	48"
MIRROR (to bottom of reflective surface - max.)	34"
TOILET PAPER DISPENSER (to Center of Roll - min.)	19"
PAPER TOWEL DISPENSOR (to Operating Mechanism)	42"
SHOWER	
Top of Seat	14"-15"
Grab Bar	28"-30"
Max. to Hand Shower Head Mounting	42"
CHALKBOARDS/TACKBOARDS	COORDINATE WITH OWNER PRIOR TO INSTALLATION TO ESTABLISH MOUNTING HGT.

18 TYPICAL MOUNTING HEIGHTS FOR GRADES PRE-K THRU 5 AT RESTROOM 10 AND 11 ONLY

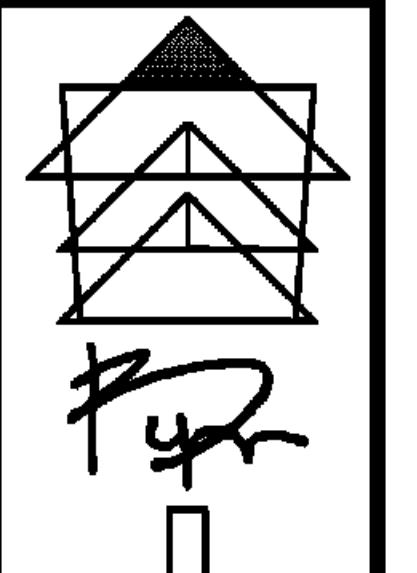
13 GRADES Pre-K thru 5



DESCRIPTION	LOUISIANA
	Ages: 16-18, Grades 9-12
WATER CLOSET: To Top of Seat	17"-19"
Grab Bars:	33"-36"
URINAL: Max. to Rim of Basin	17"
LAVATORIES:	
Frontal Approach:	
Min. Knee Clearance	29"
Max. To Top	34"
Side Approach:	
Max. To Top	34"
FIXED OR BUILT-IN:	
Height of Tables or Counter:	28"-34"
Knee Clearance: Min.	27"
Shelves & Dispensers: Max. Height to Control Device	
Frontal Approach: Max.	48"
Side Approach: Max.	54"
DRINKING FOUNTAINS:	
Max. to Spout	36"
Knee Clearance: Min.	27"
SWITCHES AND CONTROLS	
Frontal Approach - Max.	48"
Side Approach - Max.	54"
MIRROR (to bottom of reflective surface - max.)	40" max.
TOILET PAPER DISPENSER (to Center of Roll - min.)	19"
PAPER TOWEL DISPENSOR (to Operating Mechanism)	48"
SHOWER	
Top of Seat	17"-19"
Grab Bar	33"-36"
Max. Hand to Shower Head Mounting	48"
CHALKBOARDS/TACKBOARDS	COORDINATE WITH OWNER PRIOR TO INSTALLATION TO ESTABLISH MOUNTING HGT.

6 TYPICAL MOUNTING HEIGHTS FOR GRADES 9 - 12 AND ADULT STANDARD HEIGHT

1 GRADES 9-12 AND ADULT



BYRON J. STEWART & ASSOC.
ARCHITECTS & PLANNERS, APC
2300 MARENGO STREET
NEW ORLEANS, LOUISIANA 70115
(504) 527-8397 (504) 527-5342 FAX



CARTER G. WOODSON SCHOOL
RECOVERY SCHOOL DISTRICT
2514 THIRD STREET
NEW ORLEANS, LOUISIANA

FOR CONSTRUCTION

JOB NUMBER:	BL5 12B	
DATE:	04/20/10	
DRAWN BY:		
CHECKED BY:		
REVISIONS:		
NO.	DATE	REVISION

TYPICAL MOUNTING HEIGHTS

SHEET:

A-4.0