

BYRON J. STEWART & ASSOC.  
ARCHITECTS & PLANNERS, APC

2300 MARENGO STREET  
NEW ORLEANS, LOUISIANA 70115  
(504) 527-5337 (504) 527-5343 FAX



# CARTER G. WOODSON SCHOOL RECOVERY SCHOOL DISTRICT 2514 THIRD STREET NEW ORLEANS, LOUISIANA

### FOR CONSTRUCTION

JOB NUMBER: B.5.126

DATE: 04/20/10

DRAWN BY:

CHECKED BY:

### REVISIONS

| NO. | DATE | REVISION |
|-----|------|----------|
|     |      |          |
|     |      |          |
|     |      |          |

SHEET TITLE:  
THIRD FLOOR PLAN  
AREA "C"

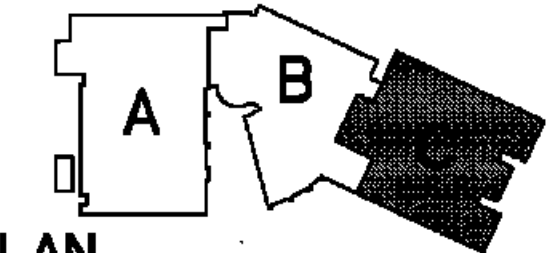
SHEET:

40 OF 220 SHEETS

# A-2.9

FOR GENERAL NOTES RE: A0.30, A0.32

### KEYPLAN



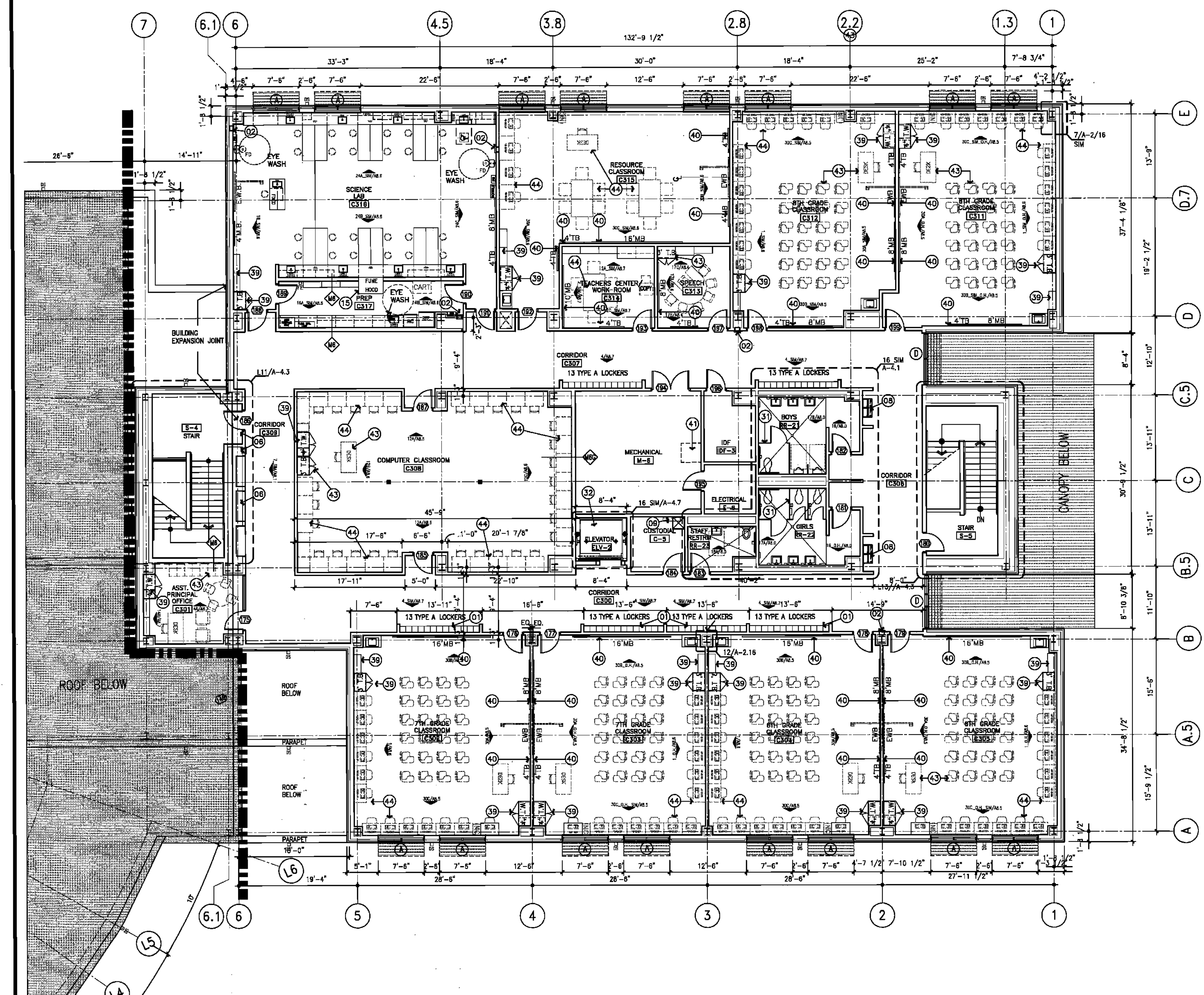
### FLOOR PLAN - KEYED NOTES

- 01 METAL LOCKERS ON 4" CMU BASE FACED WITH SCHEDULED BASE. RE: DETAILS ON A-8.1 RE: SPEC. RE: SPECIFICATIONS.
- 02 FIRE EXTINGUISHER AND CABINET SSM RECESSED. ADA COMPLIANT RE: A-4.7 RE: SPECIFICATIONS.
- 03 RECESSED WALK-OFF FLOOR MATS. RE: SPECIFICATIONS.
- 04 CUTRANS AND TRACK AT PLATFORM. RE: SPECIFICATIONS.
- 05 TV BRACKET WITH ELECTRIC AND AV/DATA OUTLET TYP. ALL CLASSROOMS. RE: SPECIFICATIONS.
- 06 DISPLAY CASE WITH SHELVING AND FLUORESCENT LIGHTING RE: DETAILS ON A-8.1 RE: SPECIFICATIONS.
- 07 CONT. FTD. 4' X 8' PLYWOOD PANELS FOR TELEPHONE EQUIPMENT, BOTTOM @ 12" A.F.F.
- 08 ELECTRIC DRINKING FOUNTAIN
- 09 MOP SINK W/ MOP RACK
- 10 MOTORIZED PROJECTION SCREEN-HORIZONTAL SEAMLESS WITH BLACK EXTRA DROP-RECESSED ABOVE CEILING RE: SPECIFICATIONS.
- 11 WINDOW SHADES AND ACCESSORIES FOR ROOM DARKENING WITH HEADBOX, CHANNELS, AND SLAT BAR. RE: SPECIFICATIONS.
- 12 HORIZONTAL BLINDS, 1" WIDE ALUMINUM ALLOYED SLATS RE: SPECIFICATIONS.
- 13 KILN AND KILN VENT RE: SPECIFICATIONS.
- 14 MAIL SLOTS. RE: SPECIFICATIONS.
- 15 FUME HOOD PASS THROUGH DEMONSTRATION ASSEMBLY ADA COMPLIANT
- 16 MUSICAL INSTRUMENTS STORAGE SHELVES RE: SPECIFICATIONS
- 17 ICE MACHINE FREESTANDING LARGE CAPACITY WATER COOLED. RE: SPECIFICATIONS.
- 18 TELESCOPING BLEACHERS ELECTRICALLY OPERATED MULTI-TIERED WITH 4 SEATING ROWS COMPRISING OF SEAT, BACK COMPONENTS. PROVIDE CUT-AWAY FOR SCORERS TABLE.
- 19 WALL PADDING RE: SPECIFICATIONS.
- 20 BASKETBALL BACKSTOP SUPPORTS, BACKSTOPS, AND GOALS PRE-STYLE CENTER STRUT RETRACTABLE. RE: SPECIFICATIONS.
- 21 INDOOR SCORE BOARD WALL MOUNTED WITH SCORING CONSOLE. RE: SPECIFICATIONS.
- 22 ALUM. HANDRAIL. RE: 5/A.12
- 23 GUARDRAIL. RE: 3/A.8.
- 24 DIVIDER CURTAIN-ELECTRICALLY OPERATED ROLL FOLD DIVIDER LOUVER SECTION 8'-0" H ABOVE FINISH FLOOR TO BE VINYL FABRIC. RE: SPECIFICATIONS.
- 25 FOLDING PARTITION TRACK/FURDOWN RE: A-9.10 SECTION DETAILS.
- 26 FOLDING PARTITIONS ELECTRICALLY OPERATED RE: SPECIFICATIONS
- 27 ACCORDIAN DOOR. RE: SPECIFICATIONS.
- 28 OVERHEAD ROLLING GRILLES-NON EGRESS RE: SPECIFICATIONS.
- 29 OVERHEAD ROLLING SECURITY GRILL-EGRESS RE: SPECIFICATIONS.
- 30 COILING COUNTER DOOR MANUALLY OPERATED (PUSH UP) ALUMINUM RE: SPECIFICATIONS.
- 31 SOLID POLYMER TOILET PARTITIONS FLOOR MOUNTED OVERHEAD BRACED RE: SPECIFICATIONS.
- 32 HOLELESS HYDRAULIC ELEVATOR-GENERAL PURPOSE FRONT OPENING RE: SPECIFICATIONS.
- 33 LAUNDRY EQUIPMENT-CLOTHES WASHER AND DRYER RE: SPECIFICATIONS.
- 34 REFRIGERATOR WITH TOP FREEZER/ICEMAKER RE: SPECIFICATIONS.
- 35 MICROWAVE OVEN RE: SPECIFICATIONS.
- 36 DECORATIVE BLACK ANODIZED ALUMINUM GATE. RE: SPECIFICATIONS.
- 37 LIBRARY SHELVING RE: SPECIFICATIONS.
- 38 LIBRARY FURNITURE RE: SPECIFICATIONS.
- 39 EDUCATIONAL CASEWORK RE: SPECIFICATIONS.
- 40 CONTINUOUS TACK STRIP ABOVE MARKER/TACKBOARDS. RE: SPECIFICATIONS.
- 41 RE: ACCESS HARDEN RE: SPECIFICATIONS AND DETAIL 1/A00X.
- 42 HANDWASH SINK RE: PLUMBING SPECS
- 43 FURNITURE & EQUIPMENT NIC
- 44 COMPUTER STATIONS NIC
- 45 FIBERGLASS INSULATED TRANSLUCENT SANDWICH PANEL ASSEMBLIES
- 46 INTERNAL ROOF DRAIN CHASE. RE: MEP.



1 16 32

FOR GENERAL NOTES RE: A0.30, A0.32



## 6 THIRD FLOOR PLAN - AREA "C"

0994-C3.DWG  
1/8" = 1'-0"