

BYRON J. STEWART & ASSOC.
ARCHITECTS & PLANNERS, APC

2300 MARENGO STREET
NEW ORLEANS, LOUISIANA 70115
(504) 527-5337 (504) 527-5342 FAX



CARTER G. WOODSON SCHOOL
RECOVERY SCHOOL DISTRICT
2514 THIRD STREET
NEW ORLEANS, LOUISIANA

FOR CONSTRUCTION

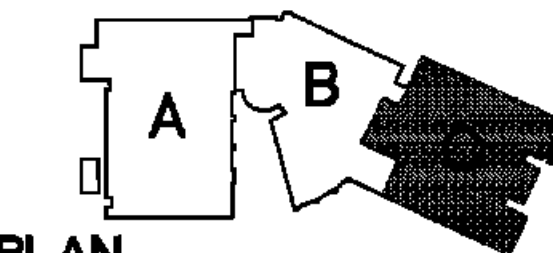
JOB NUMBER: BJS 126
DATE: 04/2010
DRAWN BY:
CHECKED BY:

REVISIONS		
NO.	DATE	REVISION

SHEET TITLE:
FIRST FLOOR PLAN AREA "C"

SHEET:
A-2.3

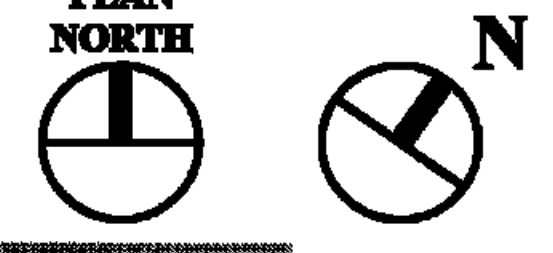
34 OF 220 SHEETS



KEYPLAN

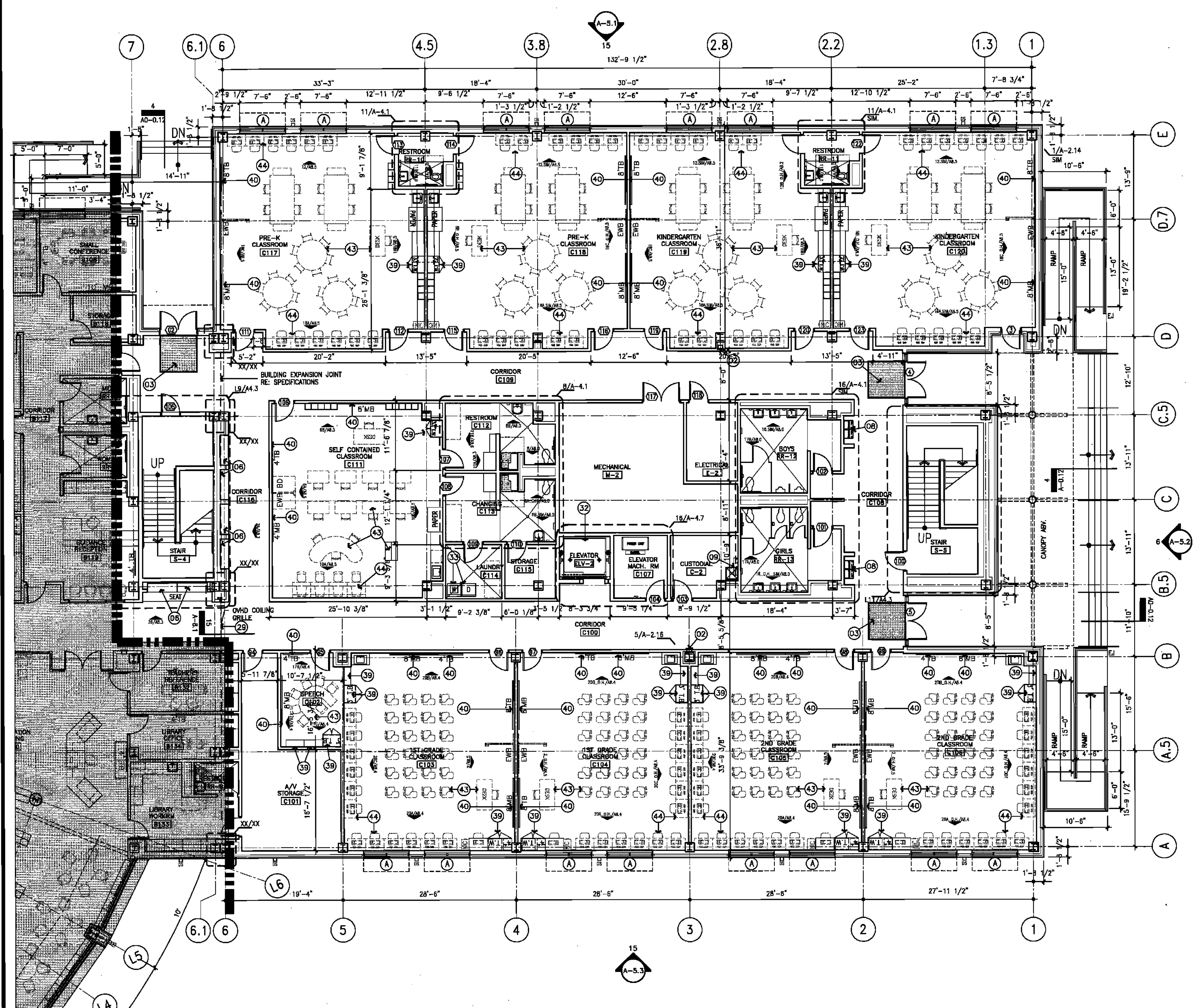
FLOOR PLAN - KEYED NOTES

- 01 METAL LOCKERS ON 4" CMU BASE FACED WITH SCHEDULED BASE RE: DETAILS ON A-8.1 RE: SPECK. RE: SPECIFICATIONS.
- 02 FIRE EXTINGUISHER AND CABINET SEM RECESSED. ADA COMPLIANT RE: A-4.7 RE: SPECIFICATIONS.
- 03 RECESSED WALK-OFF FLOOR MATS. RE: SPECIFICATIONS.
- 04 CUTRANS AND TRACK AT PLATFORM. RE: SPECIFICATIONS.
- 05 TV BRACKET WITH ELECTRIC AND AV/DATA OUTLET TYP. ALL CLASSROOMS. RE: SPECIFICATIONS.
- 06 DISPLAY CASE WITH SHELVING AND FLUORESCENT LIGHTING RE: DETAILS ON A-8.1 RE: SPECIFICATIONS.
- 07 CONT. PTD. 4" X 8" PLYWOOD PANELS FOR TELEPHONE EQUIPMENT, BOTTOM @ 12" A.F.F.
- 08 ELECTRIC DRINKING FOUNTAIN
- 09 MOP SINK W/ MOP RACK
- 10 MOTORIZED PROJECTION SCREEN-HORIZONTAL SEAMLESS WITH BLACK EXTRA DROP-RECESSED ABOVE CEILING RE: SPECIFICATIONS.
- 11 WINDOW SHADES AND ACCESSORIES FOR ROOM DARKENING WITH HEADBOX, CHANNELS, AND SLAT BAR. RE: SPECIFICATIONS.
- 12 HORIZONTAL BLINDS, 1" WIDE ALUMINUM ALLOYED SLATS RE: SPECIFICATIONS.
- 13 KILN AND KILN VENT RE: SPECIFICATIONS.
- 14 MAIL SLOTS. RE: SPECIFICATIONS.
- 15 FUME HOOD PASS THROUGH DEMONSTRATION ASSEMBLY ADA COMPLIANT
- 16 MUSICAL INSTRUMENTS STORAGE SHELVES RE: SPECIFICATIONS
- 17 ICE MACHINE FREESTANDING LARGE CAPACITY WATER COOLED. RE: SPECIFICATIONS.
- 18 TELESCOPING BLEACHERS ELECTRICALLY OPERATED MULTI-TIERED WITH 4 SEATING ROWS COMPROMISING OF SEAT, DECK COMPONENTS. PROVIDE CUT-AWAY FOR SCORES TABLE.
- 19 WALL PADDING RE: SPECIFICATIONS.
- 20 BASKETBALL BACKSTOP SUPPORTS, BACKSTOPS, AND GOALS PRO-STYLE CENTER STRUT RETRACTABLE. RE: SPECIFICATIONS.
- 21 INDOOR SCORE BOARD WALL MOUNTED WITH SCORING CONSOLE. RE: SPECIFICATIONS.
- 22 ALUM. HANDRAIL, RE: 5/A.12
- 23 GUARDRAIL, RE: 3/A.8.
- 24 DIVIDER CURTAIN-ELECTRICALLY OPERATED ROLL FOLD DIVIDER LOUVER SECTION 8'-0" H ABOVE FINISH FLOOR TO BE VINYL FABRIC. RE: SPECIFICATIONS.
- 25 FOLDING PARTITION TRACK/FURDOWN RE: A-9.10 SECTION DETAILS.
- 26 FOLDING PARTITIONS ELECTRICALLY OPERATED RE: SPECIFICATIONS
- 27 ACCORDIAN DOOR. RE: SPECIFICATIONS.
- 28 OVERHEAD ROLLING GRILLES-NON EGRESS RE: SPECIFICATIONS.
- 29 OVERHEAD ROLLING SECURITY GRILL-EGRESS RE: SPECIFICATIONS.
- 30 COILING COUNTER DOOR MANUALLY OPERATED (PUSH UP) ALUMINUM RE: SPECIFICATIONS.
- 31 SOLID POLYMER TOILET PARTITIONS FLOOR MOUNTED OVERHEAD BRACED RE: SPECIFICATIONS.
- 32 HOLELESS HYDRAULIC ELEVATOR-GENERAL PURPOSE FRONT OPENING RE: SPECIFICATIONS. SECTIONS AND DETAILS RE: SHEET A-4.7
- 33 LAUNDRY EQUIPMENT-CLOTHES WASHER AND DRYER RE: SPECIFICATIONS.
- 34 REFRIGERATOR WITH TOP FREEZER/ICEMAKER RE: SPECIFICATIONS.
- 35 MICROWAVE OVEN RE: SPECIFICATIONS.
- 36 DECORATIVE BLACK ANODIZED ALUMINUM GATE. RE: SPECIFICATIONS.
- 37 LIBRARY SHELVING RE: SPECIFICATIONS.
- 38 LIBRARY FURNITURE RE: SPECIFICATIONS.
- 39 EDUCATIONAL CASEWORK RE: SPECIFICATIONS.
- 40 CONTINUOUS TACK STRIP ABOVE MARKER/TACKBOARDS. RE: SPECIFICATIONS.
- 41 ROOF ACCESS LADDER RE: SPECIFICATIONS AND DETAIL X/AXXX.
- 42 HANDWASH SINK RE: PLUMBING SPECS
- 43 FURNITURE & EQUIPMENT NIC
- 44 COMPUTER STATIONS NIC
- 45 FIBERGLASS INSULATED TRANSLUCENT SANDWICH PANEL ASSEMBLIES
- 46 INTERNAL ROOF DRAIN CHASE. RE: MEP.



1 16 32

FOR GENERAL NOTES RE: A030, A032



6 FIRST FLOOR PLAN - AREA "C"

0994-C1.DWG
1/8" = 1'-0"