
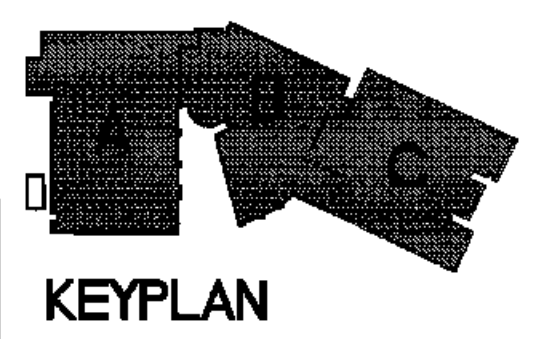
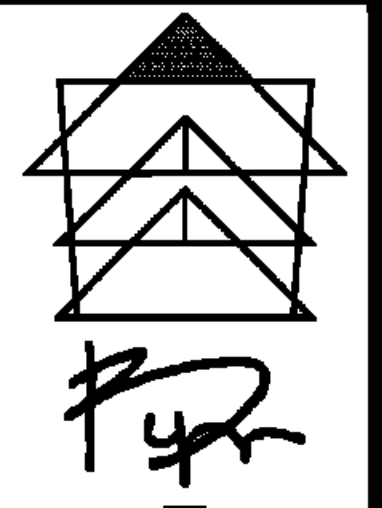


LEED COMPLIANCE LEGEND	
INDOOR ENVIRONMENTAL QUALITY CR 5	
	DENOTES ROOM WITH EXHAUST, .50 CFM/SF. FT. NEGATIVE PRESSURE, CMU WALLS TO DECK AND DOOR WITH CLOSER.



FLOOR PLAN - GENERAL NOTES

- INTERIOR PARTITIONS SHALL BE TYPE M2 UNLESS NOTED OTHERWISE. REFER TO SHEET A6.7 FOR PARTITION TYPES
- FLOOR PLAN DIMENSIONS ARE TO FACE OF CMU OR METAL STUD WALL(S) UNLESS NOTED OTHERWISE.
- REFER TO SHEET XXXXX FOR FLOOR PATTERNS
- INDUSTRIAL METAL SHELVING INDICATED ON PLANS BY SHALL BE 12" X 36", UNLESS NOTED OTHERWISE. BRACE TO WALL OR CEILING
- TYP. AREAS WITH FLOOR DRAINS: SLOPE NOT TO EXCEED ONE-IN-FIFTY.
- INTERIOR CMU CORNERS TO HAVE A BULLNOSE UNLESS NOTED OTHERWISE.
- FLOOR FINISH CHANGES SHALL OCCUR AT THE CENTERLINE OF DOORS UNLESS NOTED OTHERWISE. FLOOR FINISH CHANGES SHALL HAVE THRESHOLDS OR REDUCERS STRIPS. RE: XXXXXXXX
- COORDINATE HOUSEKEEPING PAD DIMENSIONS AND LOCATIONS WITH EQUIPMENT TO BE INSTALLED. HOUSEKEEPING PADS SHALL BE A MIN. OF 4" THICK REIN. W/ #3 BARS AT 16" O.C. BOTH WAYS. PROVIDE 1" BY 45-DEGREE CHAMFERED EDGES.
- SET DOORS IN INTERIOR CMU WALLS AND EXTERIOR BRICK WALLS 6" OFF THE PERPENDICULAR ADJACENT WALL ON THE HINGE SIDE OF THE DOOR UNLESS OTHERWISE NOTED. SET INTERIOR DOORS IN GYP. BD. STUD WALLS 4" OFF THE PERPENDICULAR ADJACENT WALL ON THE HINGE SIDE OF THE DOOR UNLESS OTHERWISE NOTED. NOTIFY THE ARCHITECT OF ANY CONFLICTS OR DISCREPANCIES WHERE THIS TYPICAL CONDITION OCCURS RE: XX/XX



BYRON J. STEWART & ASSOC.
ARCHITECTS & PLANNERS, APC

2300 MARENGO STREET
NEW ORLEANS, LOUISIANA 70115
(504) 527-5539 (504) 527-5342 FAX



PBK
Architecture
Engineering
Planning
Facility Consulting

CARTER G. WOODSON SCHOOL
RECOVERY SCHOOL DISTRICT
2514 THIRD STREET
NEW ORLEANS, LOUISIANA

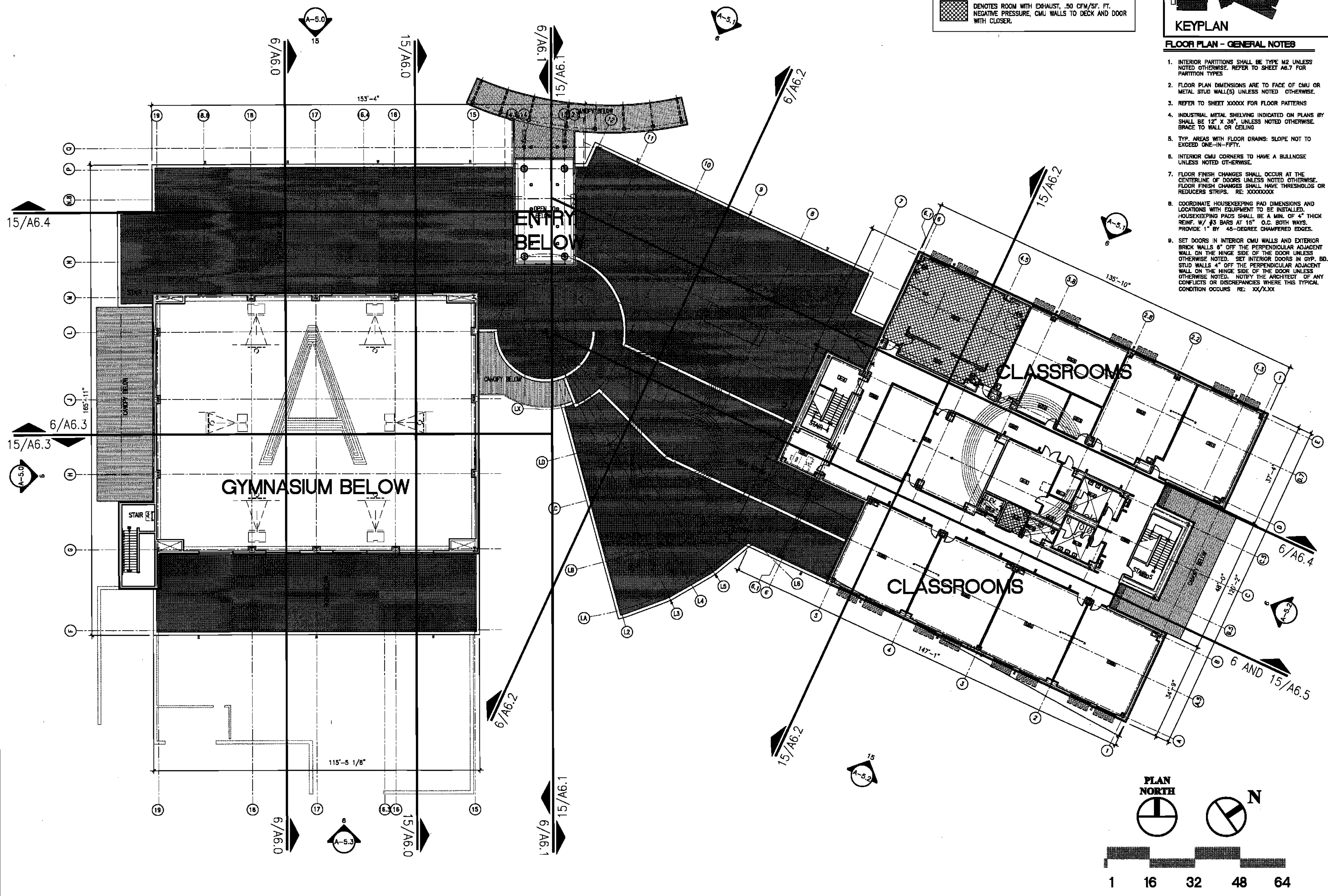
FOR CONSTRUCTION

JOB NUMBER: BLS 128
DATE: 04/20/10
DRAWN BY:
CHECKED BY:

REVISIONS		
NO.	DATE	REVISION

SHEET TITLE:
COMPOSITE THIRD FLOOR PLAN & LEED COMPLIANCE

A-0.32



6 COMPOSITE THIRD FLOOR PLAN